

Antigua

1921



Two cut-down Key Die Proofs.



A Duty Die Proof of the £1 value, annotated 'BEFORE STRIKING' and dated in manuscript '14/4/22'.

Antigua

1921-29 Wmk. Mult. Crown CA



The set overprinted **SPECIMEN**
(Samuel Type D12)

Antigua

1921-29 Wmk. Mult. Crown CA



Antigua

1921-29

Wmk. Mult. Crown CA



A corner marginal plate block of 6 of the 3d.



A corner marginal block of 12 of the 4d.



A corner marginal plate block of 4 of the 5s.



A corner marginal block of 4 of the 1s.

Antigua

1921-29 Wmk. Mult. Script CA



D12



D12



D19



D16



D19



D12



D12



D12



D16



D16



D16



D12

Antigua



D19



D16



D16



D12



D12

The set overprinted **SPECIMEN**
(Samuel Types D12, D16 and D19)

Two plate number examples of the 2½d bright blue
and the 6d dull and bright purple.



Antigua

1921-29

Wmk. Mult. Script CA



Antigua

1921-29

Wmk. Mult. Script CA



A corner marginal
Plate 1 block of 4 of
the ½d dull green.



The bottom two rows of the right hand pane
of the 1d carmine-red with Plate No. 1.

Antigua



Antigua

1921-29 Wmk. Mult. Script CA



A corner marginal block of 8 of the 1d bright violet.



A Plate 1 block of 4 of the 1d mauve.



A Plate 1 corner marginal block of 4 of the 1 1/2d dull orange.



A marginal block of 4 of the 1 1/2d carmine-red.

Antigua

1921-29

Wmk. Mult. Script CA



A corner marginal block of 4 of the 1½d pale red-brown showing sheet number.



A corner marginal block of 4 of the 2d grey.



A Plate 1 corner marginal block of 9 of the 2½d bright blue.



A Plate 1 corner marginal block of 6 of the 2½d orange-yellow.

Antigua

1921-29 Wmk. Mult. Script CA



A Plate 1 corner marginal block of 4 of the 3d purple/pale yellow.



A Plate 1 corner marginal block of 4 of the 6d dull and bright purple.



A Plate 1 corner marginal block of 4 of the 2s purple and blue/blue.



A Plate 1 corner marginal block of 4 of the 4s grey-black and red.

Antigua

Before moving onto the uses of these issues, there is one variety which is of interest. This is the 'shifted *découpage*' variety. This is in the form of a colourless shadow appearing beside the duty imprint. The reasons for this variety are rather complicated but for those interested the book *Fundamentals of Philately* by L. N. Williams has a good explanation.

It is most unusual to find this variety on cover.



Antigua

A rather quaint habit, common in those days, of placing the adhesive on the picture side of a postcard. This example of a 'Traveler Palm, Botanic Station, Antigua, B.W.I.', is dated 2 October 1930.



Antigua

A commercial cover to the USA, to the Chrysler Car Company, Detroit dated 26 October 1928.



A very late use of these stamps, dated 20 January 1937.



Antigua

Another late use of these stamps combined with a Federal issue 2d grey.



A commercial cover, addressed to Bristol, via Trinidad, dated 1 September 1931.

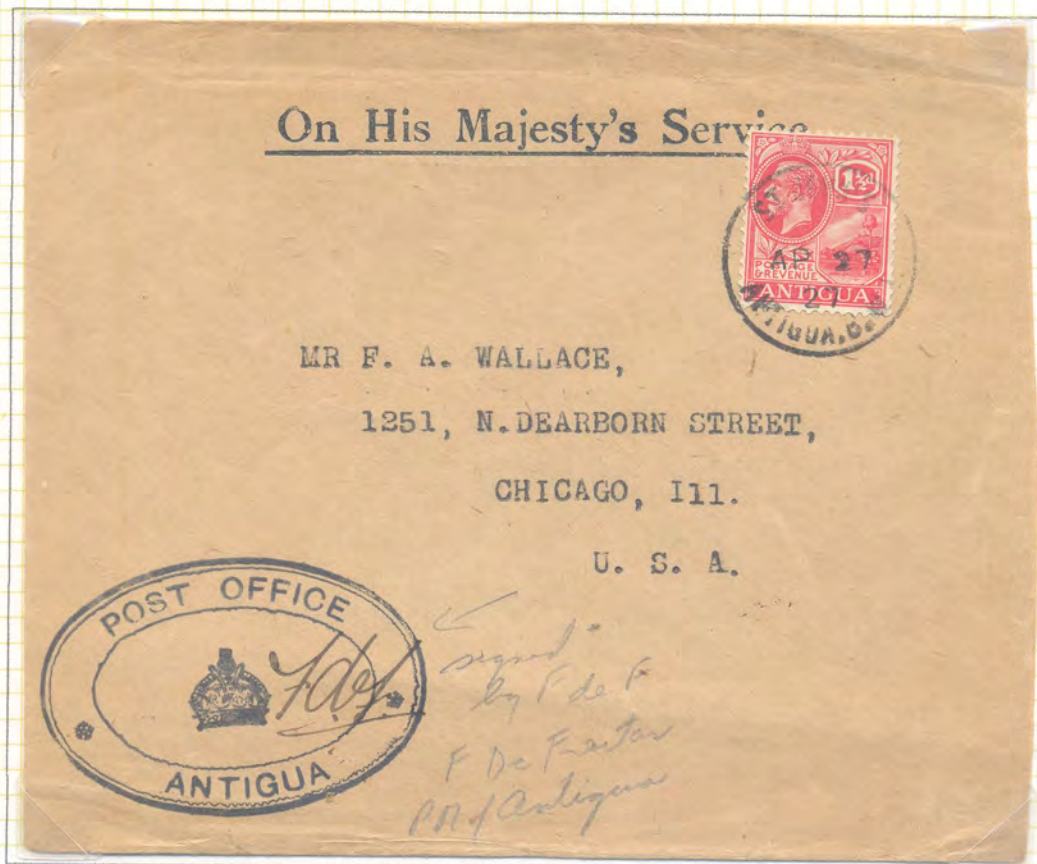


Antigua

This rather attractive 'WILSON' philatelic cover, dated 15 January 1924, bears 1/2d, 1 1/2d, 2d and 6d adhesives.



A 1 1/2d OHMS cover to the USA, personally initialed by the Postmaster-General of Antigua, Mr. F. De Freitas, and dated 27 April 1927.

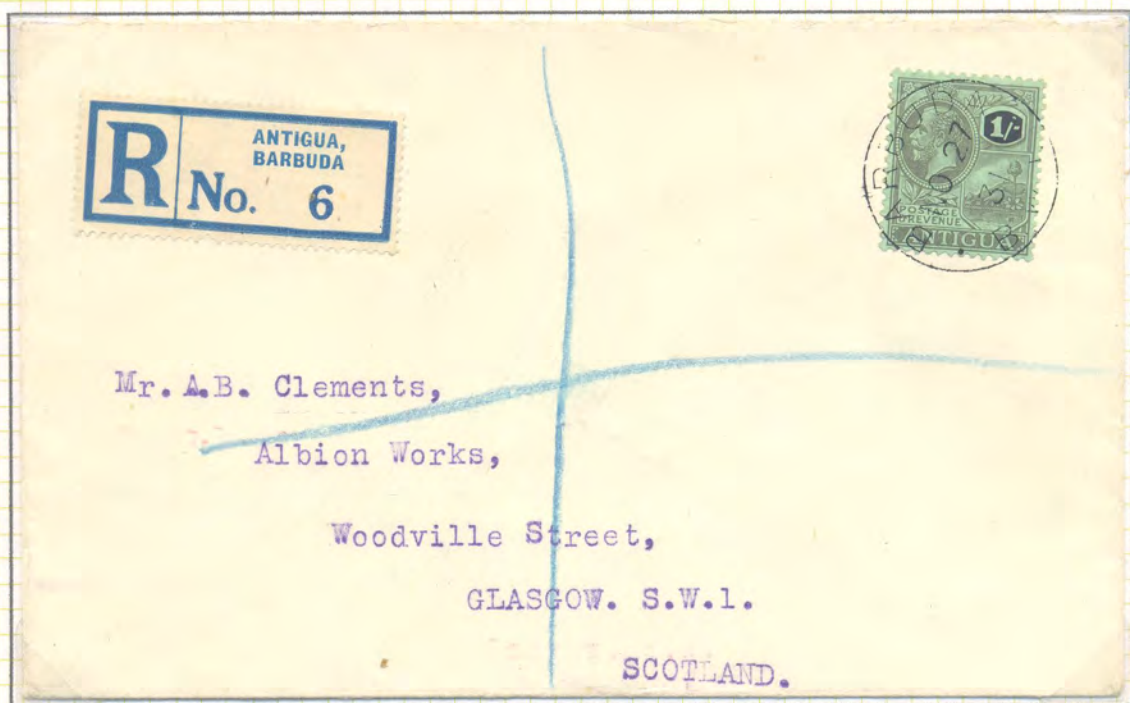


Antigua

Antigua adhesives were also used in Barbuda; this neat printed cover, no doubt philatelic, bears not only a 1½d adhesive of Antigua but two of the overprinted Federal issue ½d. It shows a clear Barbuda cds of 21 November 1930 (Oliver B1).

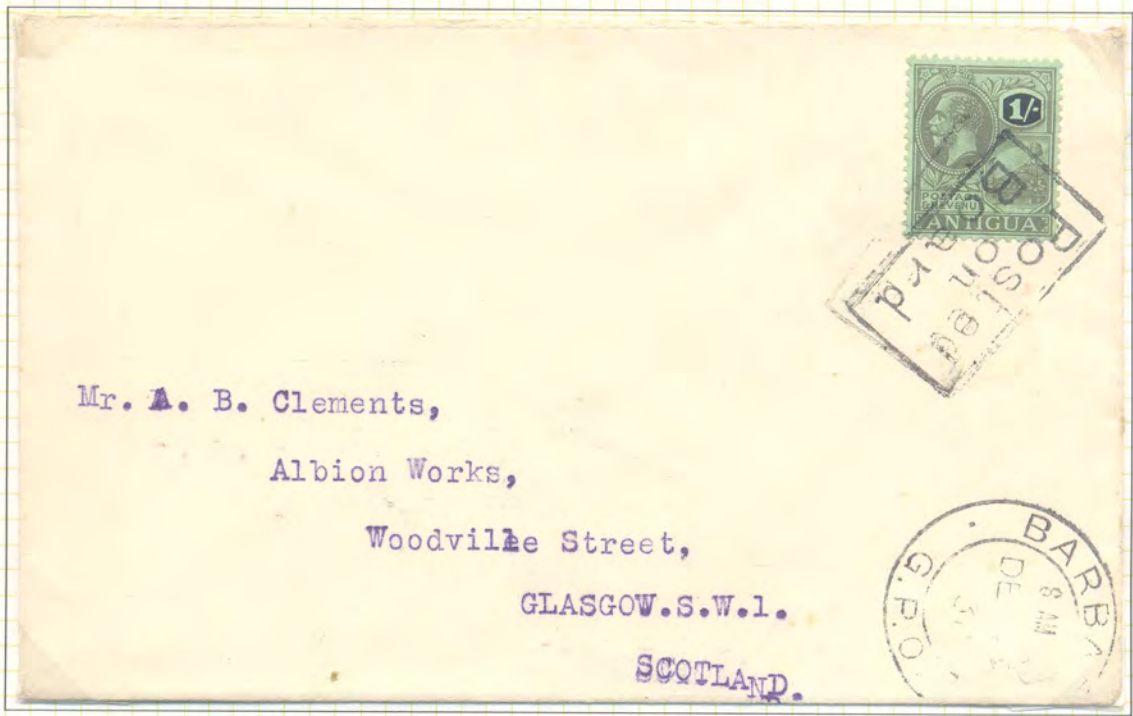


Another cover, this time addressed to Scotland and registered, is franked with a 1s and dated 27 November 1931.



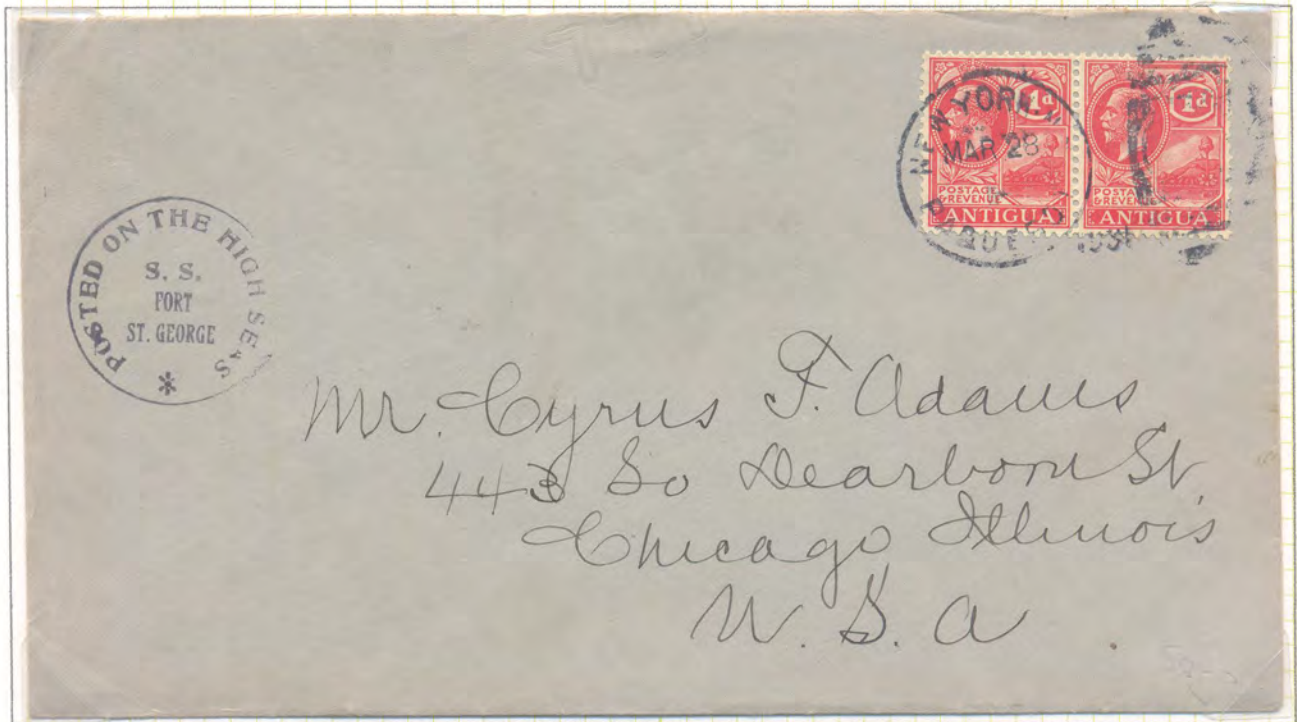
Antigua

The period in which these stamps were in use was the heyday of the ocean liners – with smaller ships servicing the inter-island routes. These two covers were obviously posted on board the same ship at the same time, but probably, because of the different envelope sizes, posted by different people. The ship was en route to Barbados, where the letters entered the postal service and were postmarked 'BARBADOS' and dated 20 December 1931.

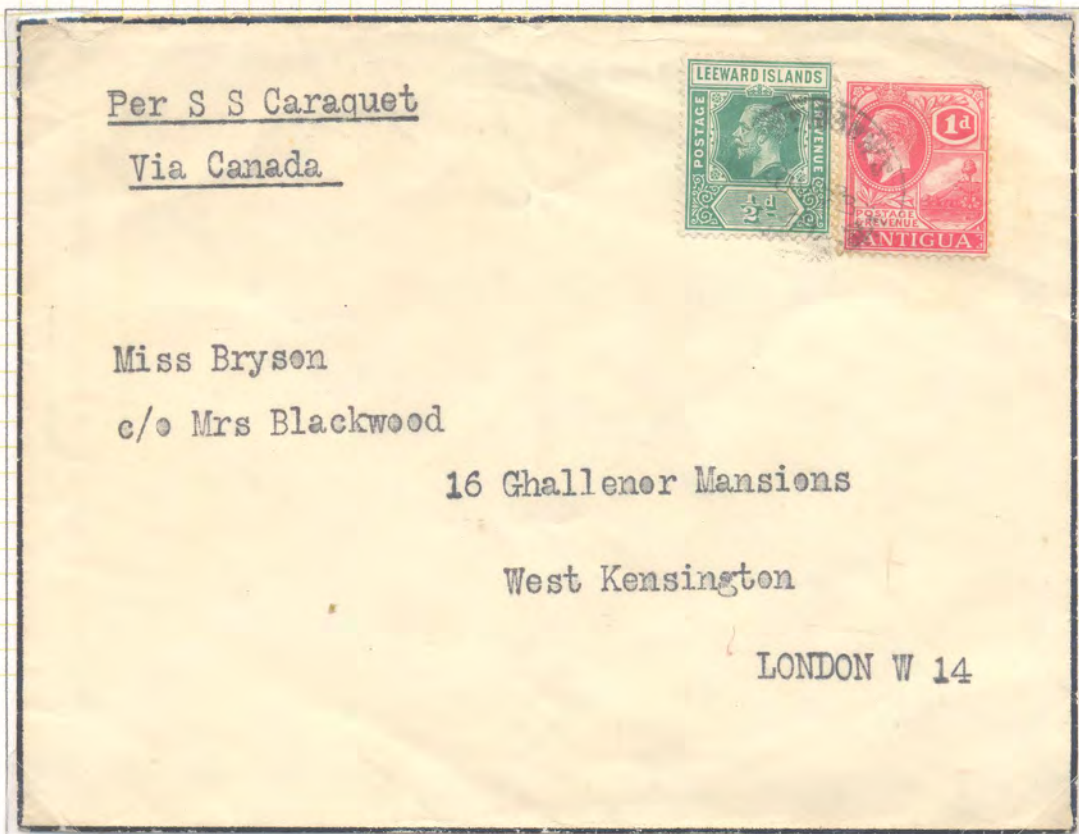


Antigua

This cover, addressed to Chicago, was posted on board the **S.S. FORT ST. GEORGE** and handstamped with the ship's cachet. The two 1d adhesives are cancelled with a 'NEW YORK PAQUEBOT' duplex of 28 March 1931.



This mourning cover to the UK is endorsed '**S.S. CARAQUET**', a 5,000 ton liner in the Royal Mail Line, unfortunately void of the usual cachet used on this ship. The cover is franked with a 1d as well as a ½d Federal issue.



Antigua

After a survey flight in the July, the first commercial flight from Miami was made on 21 September 1929; the pilot was Col. Charles Lindberg. This First Flight cover to St. Lucia is franked with a 1½d and three 2½d adhesives and cancelled with a St. Johns, Antigua cds and a blue 'BY AIR MAIL/PAR AVION' label. This flight initiated the Foreign Air Mail 6 (FAM6) contract by Pan American Airlines.



Antigua

The return flight left Dutch Guiana on 24 September 1929, piloted by Capt. Jack Tilton. Mail from Antigua was sent via St. Thomas to Puerto Rico. This cover left Antigua early on the 26th, arriving at San Juan later the same day (the cover is backstamped with this date). It is franked with a 3d and 6d adhesive.



This unaddressed cover bears the First Flight cachet of the FAM6 route and bearing a 1d, 1½d, 2½d and 4d adhesives. Markings on the reverse show its destination was New York.



Antigua

This illustrated cover, addressed to a Puerto Rican philatelist and flown on the return flight, bears a 1½d and three 2½d adhesives.



This cover addressed to Miami on the first return flight, bears a slightly different St. John's postmark. It is reputedly its last known day of use. The two 1d scarlet are believed to have been added subsequently.



Antigua

These two covers, addressed to the USA, were carried on the return First Flight and bear the cachet 'FIRST AIR MAIL/ANTIGUA TO U.S.A./SEPTEMBER 1929'.



Antigua

This cover was carried on the First Flight from Antigua to Kingston, Jamaica by Pan American Airlines. Only 36 letters were carried and it was cancelled at St Johns on 13 December 1930. The cover was backstamped at Kingston on the 17th.



In these early days, routes were continually changing and in January 1931, FAM6 was extended to French Guiana. This cover is dated 13 January 1931.



Antigua

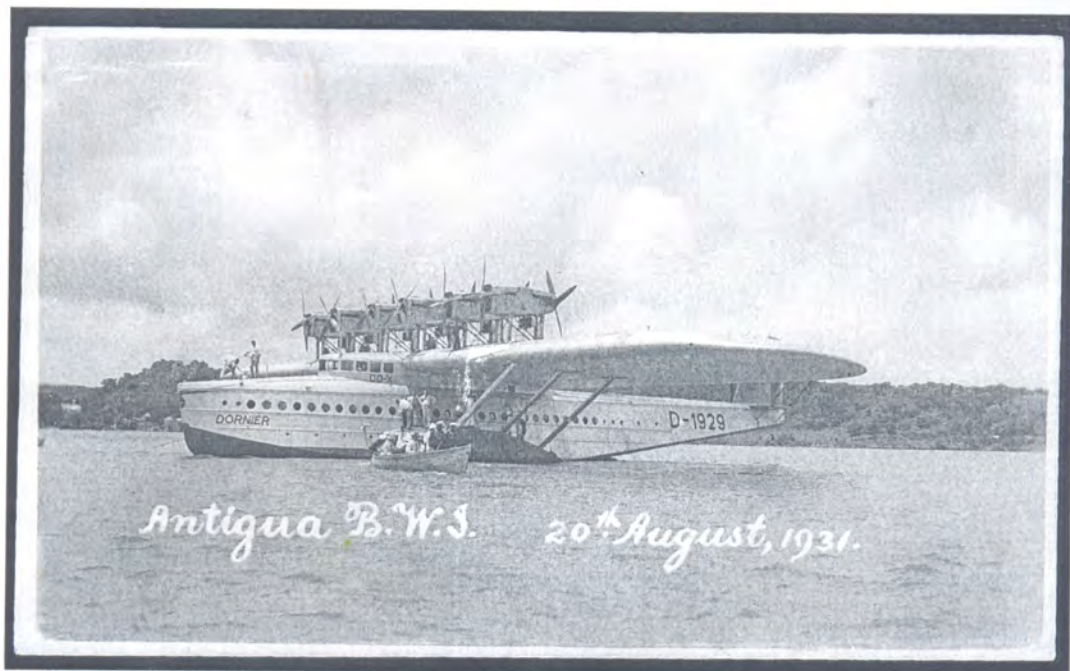
This cover was addressed to the UK, bears a 'Jusqu'à' mark indicating that insufficient postage had been paid and that the letter would proceed by sea.



Antigua

In August 1931 the huge Dornier DO-X airliner called at Antigua.

This 12-engined goliath was on a proving flight from Germany to the United States and had been en-route for nearly 10 months due to various misadventures. This cover addressed to the UK is franked by 3 x 4d adhesives and shows a special flight cachet from Antigua; it also shows a Jusqu'à mark in black indicating that the journey from New York to England was completed by sea.



Antigua

During this period, there were many village postmarks in use. This Montgomery Ward cover to Chicago shows a St. Mary's cds, dated 11 October 1924.



This interesting cover is addressed to Lennards Limited of Bristol, well-known boot and shoe makers. It is franked by 4 copies of the Leeward Islands keyplate 1d and a single 1/2d of Antigua. Of more interest is the fact that it emanates from Parham (formerly St. Peter's) and bears the St. Peter's cds as well as the scarce Parham registration label.

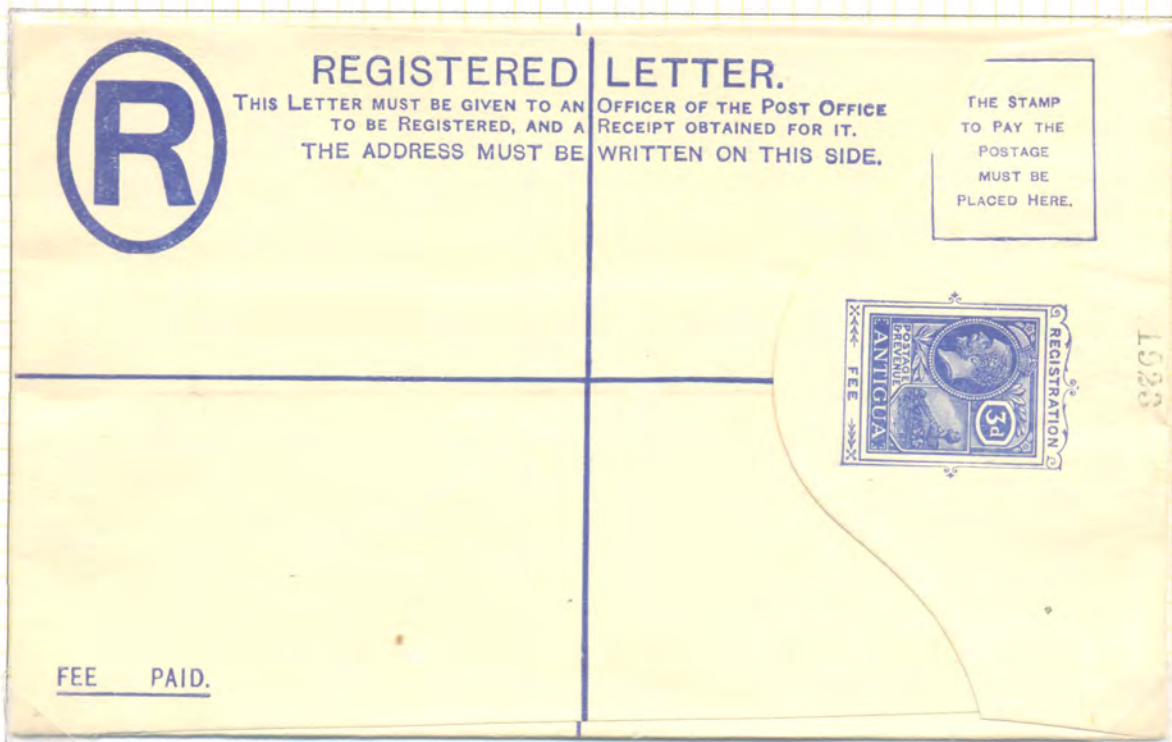


Antigua

The design which appeared on the stamps was to reappear in a different guise, i.e. on postal stationery. Antigua only had one postcard with this design, a 1/2d.



The design was also used for postal stationery registered envelopes. This is the Size G 3d envelope overprinted 'SPECIMEN' (Bendon D4) and inscribed with the year date '1923' indicating that it is from the UPU archives and the year date they were received.



Antigua

1924 This is the Size H2 envelope again a copy overprinted 'SPECIMEN' and taken from the UPU archives and dated '1923'.

