

# Queen Victoria Key and Duty Plate Issues

In 1863 the Bahamas authorities passed a request to the Agents-General for the Crown Colonies for a new 1/- value, to be printed in green. De La Rue proposed a design modelled on the original Wyon Medal, and their celebrated engraver Jean Joubert de la Ferté engraved the die.

1863-80

Surface printed by De La Rue

Wmk. Crown CC

Perf.14



green

1882 (Mar) - 98

Wmk. Crown CA

Perf.14



green



blue-green (1898)

# Queen Victoria Key and Duty Plate Issues

1884-90

Surface printed by De La Rue

wmk. Crown CA

Perf. 14

A new design was introduced in 1884, based on that produced for the 1/- value. There is less ornamentation at the sides and the duty was provided by solid figures on a white background. The 2½d, 5/- and £1 values were added to the series at this time.



UPU Specimens were only produced for the 2½d and 6d values



carmine-rose



pale rose



bright carmine (aniline)



blue



ultramarine

# Queen Victoria Key and Duty Plate Issues

1884-90

Surface printed by De La Rue

wmk. Crown CA

Perf. 14



# King Edward VII Definitive Issue

In 1902 a new key plate design, incorporating the new monarch's portrait and the pineapple and conch shell emblems, was introduced. The duty plates employed for the previous QV issue were retained and employed for the Edwardian series.

1902-1910

Surface printed by De La Rue

Wmk. Crown CA

Perf.14

## Specimens



727 specimens of each value were issued

## Specimens overprinted ULTRAMAR

Additionally overprinted ULTRAMAR by the Portuguese receiving authorities for distribution to their colonies. Only 25 sets can exist.



# King Edward VII Definitive Issue

In 1902 a new key plate design, incorporating the new monarch's portrait and the pineapple and conch shell emblems, was introduced. The duty plates employed for the previous QV issue were retained

1902-1910

Surface printed by De La Rue

Wmk. Crown CA

Perf.14



orange

deep yellow



grey-black



brownish grey



grey-black



brownish grey

# King Edward VII Definitive Issue

1906-11

Printed in sheets of 60 from Plate 1

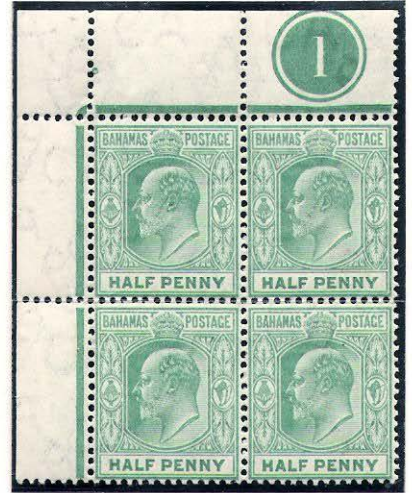
Wmk. Mult. Crown CA

Forty seven years after the first issue of stamps a halfpenny value was introduced for the first time.



The side margin was not perforated on the first printing (Mar 1906)

$\frac{1}{2}$ d  
3,030 shts, Mar 1906  
1,000 shts, Jul 1911  
1,018 shts, Mar 1912



A later printing, perforated through side margin.



1d  
4,007 shts, Oct 1906  
4,018 shts, Nov 1908  
4,968 shts, Oct 1909  
5,108 shts, Jul 1911

Type A sheet number font.



$2\frac{1}{2}$ d  
4,075 shts, Oct 1906  
4,010 shts, Nov 1908

Type A sheet number font.



6d  
104 shts, Jul 1911  
100 shts, Nov 1911  
105 shts, Mar 1912

Type B sheet number font.

# King George V 'King's Head' Definitive Issue

20th May 1912

Surface Printed by De La Rue

Wmk. Mult Crown CA

Perf. 14

404 Specimens were issued for each value. The side margins were usually removed from the sheets overprinted SPECIMEN, and the presence of plate numbers on surviving examples is unusual.



Lower left corner marginal copies have a flaw consisting of damage to the 'M' and 'N' of SPECIMEN.

M N

# King George V 'King's Head' Definitive Issue

A 60-set key plate (Plate 1) was used for all printings up to 1918. Sheets from this plate having a right margin with only one marginal rule, and wider than 5mm from this rule, must originate from a sheet printed in 60-set size.



Plate 1 printings after 1918 have two marginal rules on the right margin.

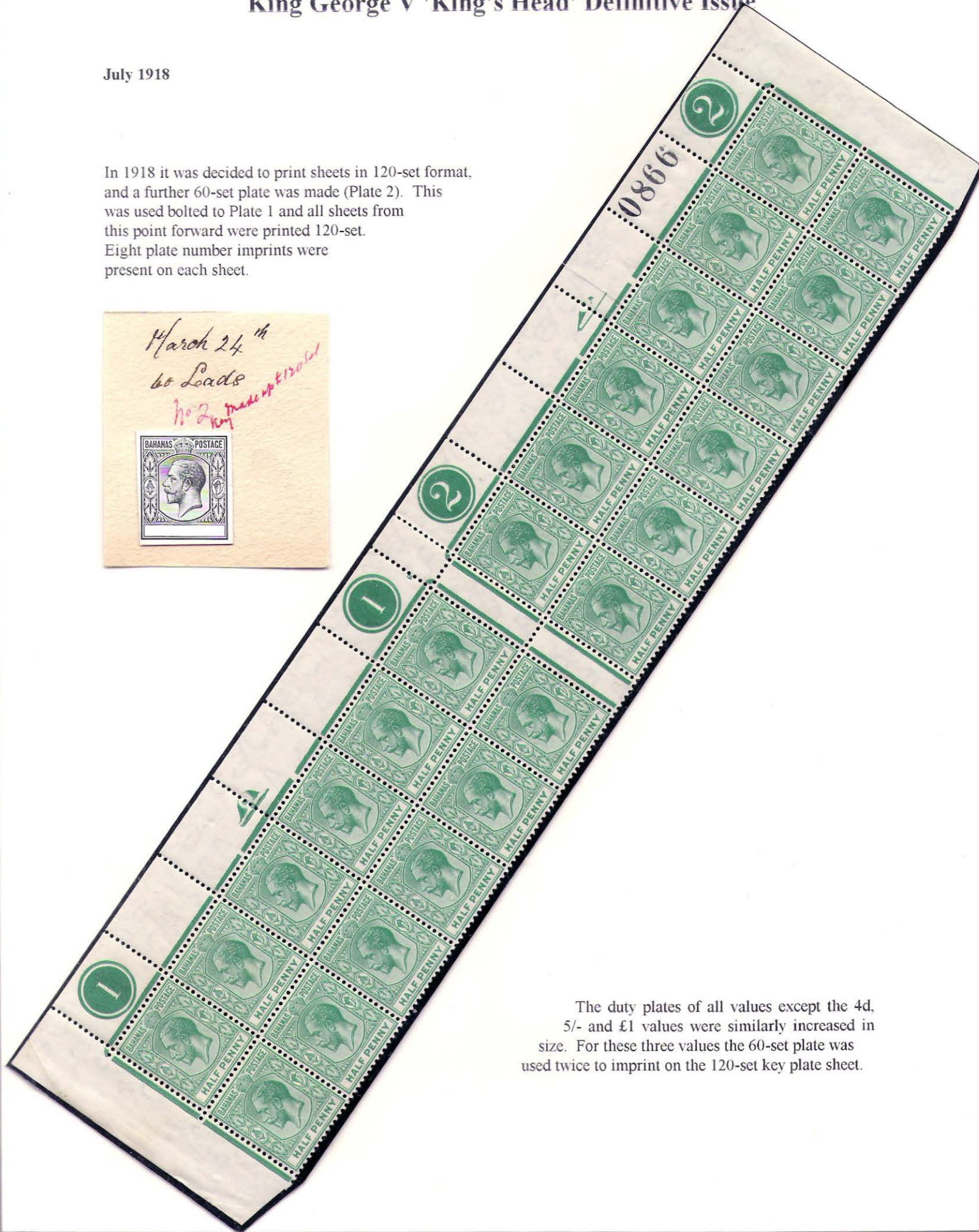
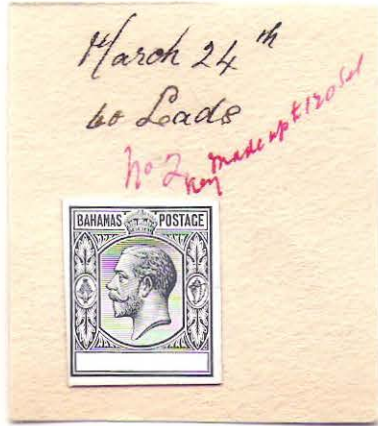




# King George V 'King's Head' Definitive Issue

July 1918

In 1918 it was decided to print sheets in 120-set format, and a further 60-set plate was made (Plate 2). This was used bolted to Plate 1 and all sheets from this point forward were printed 120-set. Eight plate number imprints were present on each sheet.



The duty plates of all values except the 4d, 5/- and £1 values were similarly increased in size. For these three values the 60-set plate was used twice to imprint on the 120-set key plate sheet.

# King George V 'King's Head' Definitive Issue

In 1918 it was decided that in future all sheets would be printed 120-set. A new 60-set keyplate (Plate 2) was made and used in conjunction with the existing Plate 1 to print 120-set sheets. All duty plates except the 4d, 5/- and £1 were increased in size to 120-set at this time.



# King George V 'King's Head' Definitive Issue

1912-18

Wmk Mult. Crown CA

Only two printings were made.



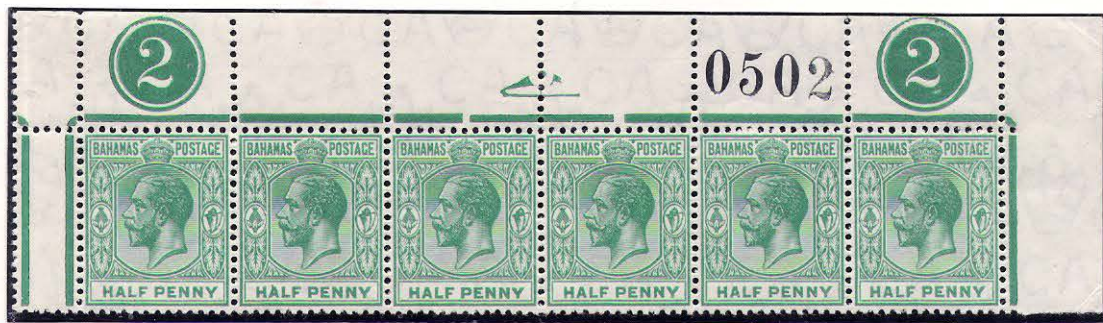
Yellow-Green

May 1912 – 3,018 shts



Green

Oct 1918 – 1,004 shts



# King George V 'King's Head' Definitive Issue

1912-18

Wmk Mult. Crown CA



Carmine (aniline)



Deep rose



Rose

# King George V 'King's Head' Definitive Issue

12th October 1918

Following the increase in the postal rate to the U.S.A to 2d a new duty was required. The 2d duty plate was made consisting of two panes of 60 to produce 120-set sheets.



Specimen strip of 3 from the Madagascar archives.



# King George V 'King's Head' Definitive Issue

1912-18

Wmk Mult. Crown CA



ultramarine

May 1912 – 496 shts of 60



blue

Dec 1918 – 55 shts of 120



Deep dull blue



July 1919 – 105 shts of 120

# King George V 'King's Head' Definitive Issue

1912-18

Wmk Mult. Crown CA

May 1912 – 95 shts of 60  
 Oct 1912 – 200 shts of 60  
 Dec 1912 – 198 shts of 60

Jul 1918 – 53 shts of 120  
 Jul 1919 – 100 shts of 120



yellow



yellow

May 1912 ptg  
 (2 digit Sht. No.)  
 perforated side margin



Orange-yellow



Orange-yellow  
 Jul 1918 ptg  
 (2 digit Sht. No.)  
 imperforate side margin

# King George V 'King's Head' Definitive Issue

1912-18

Wmk Mult. Crown CA

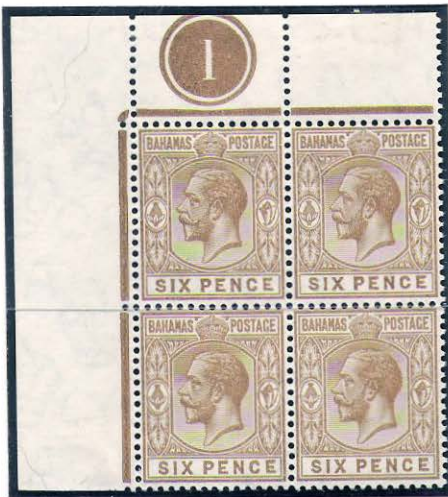
May 1912 – 205 shts of 60 } from plate 1 only  
Dec 1912 – 199 shts of 60 } with side margins  
Sep 1915 – 203 shts of 60 } perforated



May 1912 Printing



Dec 1918 – 103 shts of 120 from Plates 1 and 2 combined



Side margins imperforate  
on combined plate printing



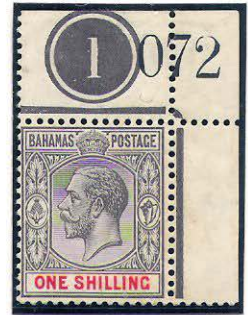
# King George V 'King's Head' Definitive Issue

1912-18

Wmk Mult. Crown CA



May 1912 – 205 shts of 60  
 Feb 1913 – 104 shts of 60  
 Sep 1915 – 202 shts of 60  
 Oct 1918 – 105 shts of 120  
 Feb 1919 – 244 shts of 120



Type B sheet  
 number font



Black and carmine



Black and red



Black and carmine



Feb 1919 ptg. (244 shts)

# King George V 'King's Head' Definitive Issue

1912-18

Wmk Mult. Crown CA

5s

May 1912 – 95 shts of 60

Apr 1916 – 54 shts of 60

Jul 1919 - 52 shts of 120

Oct 1920 – 105 shts of 120



Dull purple and blue  
Perforated side  
margin



Dull purple and bright blue

£1

May 1912 – 97 shts of 60

Oct 1920 – 104 shts of 120



dull green and black



green and black

# The War Tax Issues

In 1918 the War Tax Stamp Act was passed by the Legislative Assembly, whereby a tax was levied on every postal item posted within the colony. Post to persons on Active War Service, or the British Red Cross Society or any other Charitable War Society were exempt from this tax.

Existing stocks of the ½d, 1d, 3d and 1/- were locally overprinted at the offices of the Nassau Gazette.

21st Feb. 1918



# The War Tax Issues

20th July 1918

Overprinted by De La Rue

Wmk. Crown CA

Perf. 14

379 Specimen sets were issued



Specimen type Samuel Type D12

Registered Letter to Berne, Switzerland, backstamped London



# The War Tax Issues

20th July 1918

Overprinted by De La Rue

Wmk. Crown CA

Perf. 14



# War Tax Issues

## Variety – bent leg of 'X'

This War Tax overprint plate was also used for Barbados, Gilbert & Ellice Is., Grenada, Malta St Kitts and St Lucia. The flaw first appeared in February 1918, but is present only on the issues of Bahamas Barbados, Gilbert & Ellice Is., Grenada, Malta



The right lower leg of 'X' is bent.  
Constant flaw on Row 1 Stamp 6 of right pane only



Bent leg of 'X' on Gilbert & Ellice Is.



Bent leg of 'X' on Barbados.

# The War Tax Issues

14th July 1919

Overprinted in two lines by De La Rue

Wmk. Crown CA

Perf.14



379 Specimen sets were issued. Samuel Type D12 Specimen.



Specimens from the Madagascar archives.



# The War Tax Issues

14th July 1919

Overprinted in two lines by De La Rue

Wmk. Crown CA

Perf.14





# King George V 'King's Head' Definitive Issue

Following the introduction of the new Multiple Script CA paper in 1921 Specimens were issued for the first printing of each value. The type D12 Specimen overprint was replaced by type D16 in 1923, and after 1928 the word SPECIMEN was perforated. The Bahamas series thus features all three types.

1921-34

Wmk.Mult. Script CA

Perf.14

Specimens

Samuel Type D12



1922



1922



1922

Specimens

Samuel Type D16



1923



1923



1923



1926



1926



1927

Specimens

perforated Samuel Type D19



1931



1934

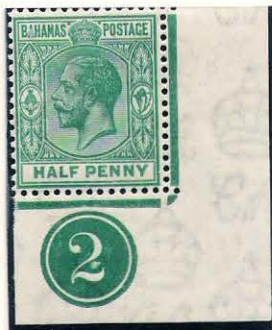
# King George V 'King's Head' Definitive Issue

1921-31

Wmk. Mult. Script CA

Perf 14

After 1929 sheets were supplied cut into 60-set panes. Each pane was numbered, and hence Plate 1 blocks with a sheet number must originate before 1929.



pale yellow-green

deepish green



# King George V 'King's Head' Definitive Issue

1921-31

Wmk. Mult. Script CA

Perf 14



Only one printing made of this value – 30,055 panes of 60 in January 1934



In 1927 the 2d duty plate interpanneau jubilee lines (outer) in the central vertical margin were removed.

# King George V 'King's Head' Definitive Issue

1921-31

Wmk. Mult. Script CA

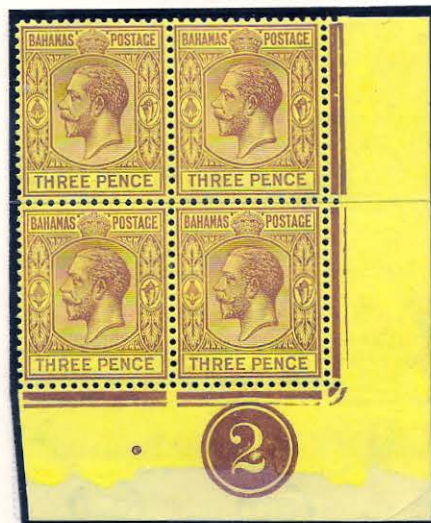
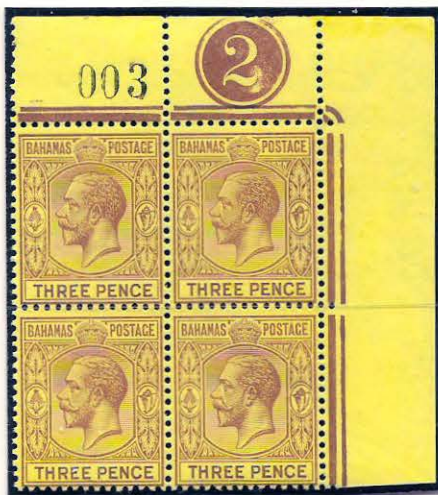
Perf 14



Dec 1933



1931 purple on pale yellow surfaced paper



1937 purple on bright yellow surfaced paper

# King George V 'King's Head' Definitive Issue

1921-31

Wmk. Mult. Script CA

Perf 14



orange

Orange-brown and orange-yellow



Number of Sht. No. digits identifies these blocks as emanating from different printings

# King George V 'King's Head' Definitive Issue

1921-31

Wmk. Mult. Script CA

Perf 14



4 printings – 1926, 1927, 1929 & 1930



Grey-black

black



3 printings – 1923, 1927, & 1935

1 printing – March 1926

# Flaws and Varieties on the Surface Printed Issues

## Sloping '2' variety

Base of the large '2' in '2½d' has a distinct slope downwards. Constant variety on row 10 stamp 6 of the 60-set pane.

**2**  
Sloping 2 variety

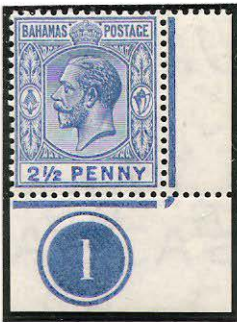


1902  
Wmk. Crown CA



1907 - Wmk. Mult. Crown CA

In 1918 the 60-set 2½d duty plate was replaced by a new 120-set plate, and thus the flaw no longer appears.



May 1912 - Wmk. Mult. Crown CA  
496 sheets printed - the only printing  
with the flaw.

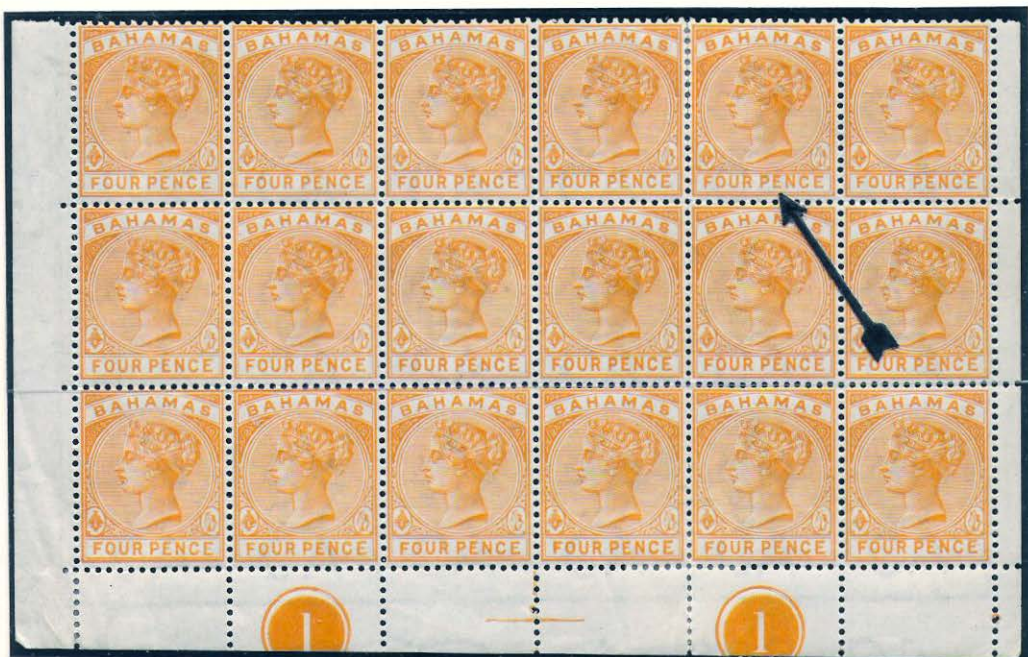


The flaw is not present on the KGV  
issue on Mult. Script CA paper

# Duty Plate Varieties on the Surface Printed Issues

## Dot in 1st 'E' of 'PENCE' Variety

This variety was present on the 4d duty plate, (row 8 stamp 5), from 1884 until 1937. When the key plate was increased to 120-set 1918, the 4d duty plate remained 60-set and was used twice to overprint the key plate sheet. The variety thus occurs in the same position on both panes.



1884 - 90



1902-10  
wmk. Crown CA



Yellow



Orange-yellow



1921-37  
wmk. Mult. Script CA

1912-19  
wmk. Mult. Crown CA



# Duty Plate Varieties on the Surface Printed Issues

## Malformed 'E' Variety

This variety was present on the 6d duty plate (Row 6 stamp 6) from 1884 until 1937.



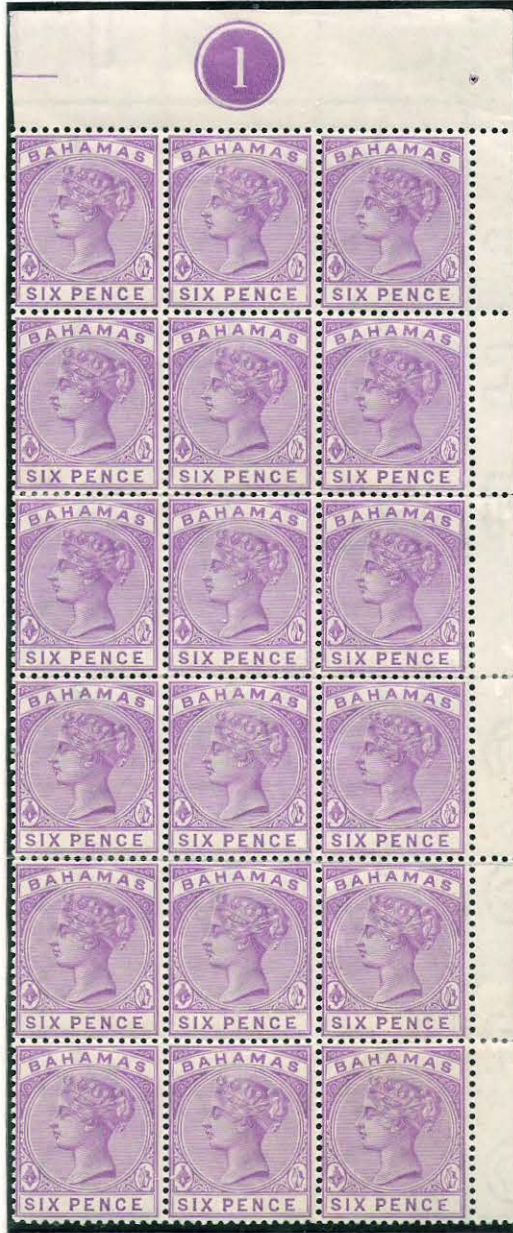
Malformed "E"



1884-90



1912-19  
wmk. Mult. Crown CA



1902-10  
wmk. Crown CA



1921-37  
wmk. Mult. Script CA



1906-1911  
wmk. Mult. Crown CA

# Duty Plate Varieties on the Surface Printed Issues

## Swan's Head 'S' Variety

This variety was present on the 6d duty plate, position unknown, from 1884 until 1937.



QV

Initially the variety was sharp and clear, but over time it attained a smoother, less pronounced, outline.



KGV



1902-10  
wmk. Crown CA



1902-10  
wmk. Crown CA



1906-11  
wmk. Mult. Crown CA



1912-19  
wmk. Mult. Crown CA



1921-37  
wmk. Mult. Script CA

# Duty Plate Varieties on the Surface Printed Issues

## Short RH leg of 'N' Variety

This variety was present on the 6d duty plate, (row 10 stamp 2), from 1884 until 1937.



1884 - 90



Wmk. MCCA



Wmk. MCCA

## Dot in 'S' Variety

This variety was present on the 6d duty plate, position unknown, from 1884 until at least 1911.



wmk. Crown CA



wmk. Crown CA



wmk. MCCA

# Flaws and Varieties on the Surface Printed Issues

## Elongated 'E' variety

Present on Row 9 stamp 6 of the LH pane. The plate was damaged towards the end of the KGV period and remained unrepaired to the end of the KGVI era.



Elongated "E"  
(left pane R. 9/6)



1952

## Twisted, thick bar to 'H'



Position unknown

## Perforation variety caused by paper fold.



1912-15  
wmk. Mult Crown CA

# King George VI Definitive Issue

1938

Surface printed by De La Rue

Wmk. Mult. Script CA

Perf.14

## Specimens



Changes in postal rates required the following values to be re-issued in different colours.

1941



1d changed from red to grey



2d changed from grey to red

1943



2 1/2d changed from blue to violet



3d changed from violet to blue

1946



new value

BAHAMAS

1938 KGVI Head transplants



1938 values to 1s with alternative head/frame combinations