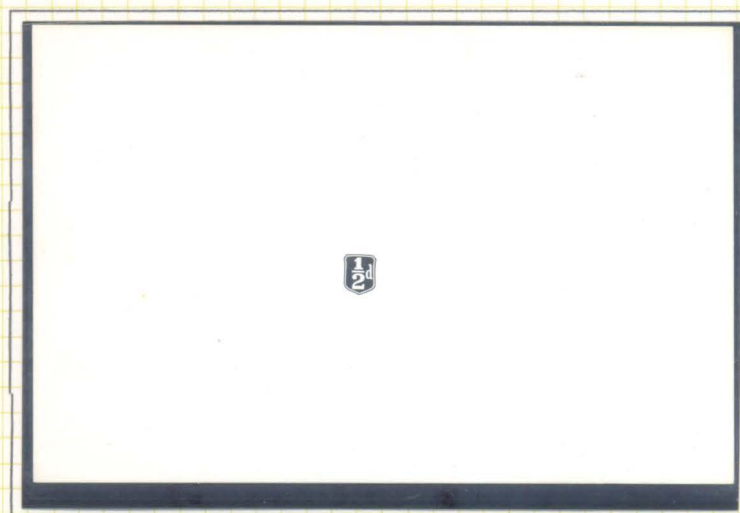


Barbados

1912 (23 July) – 1916



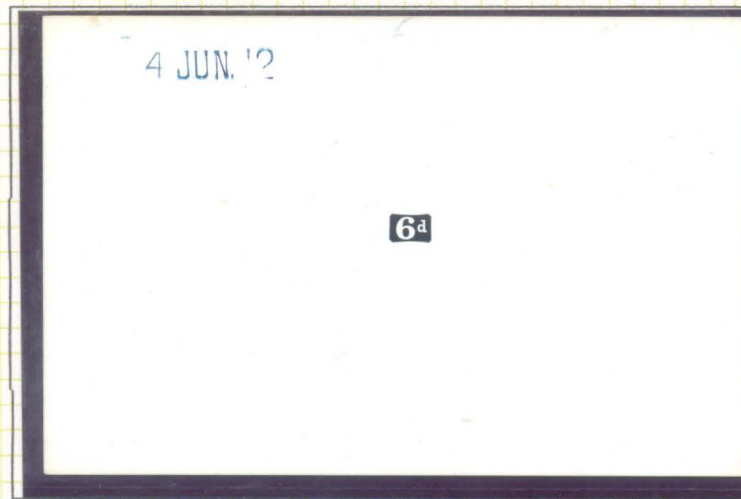
Key Die Proof of the 3d, 4d and 6d values, in black on glazed card, and marked 'BEFORE HARDENING' and dated '17 MAY 12'.



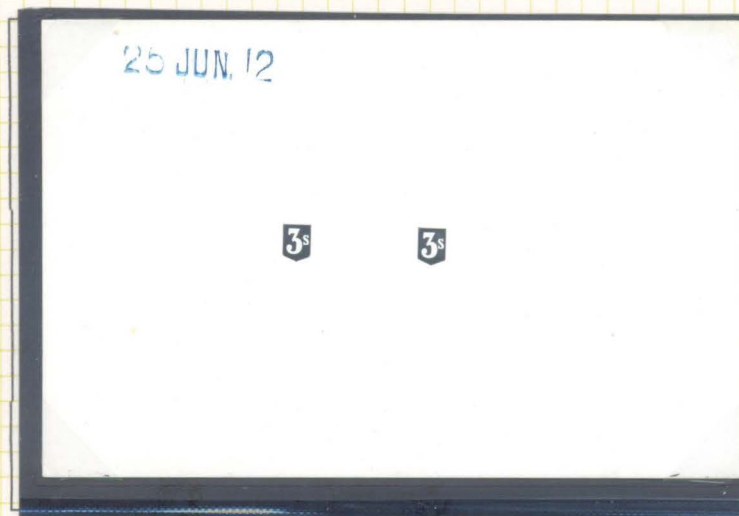
A Duty Die Proof of the ½d in black on glazed card and undated.

Barbados

1912 (23 July) – 1916



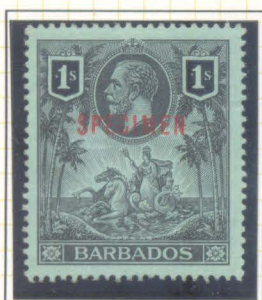
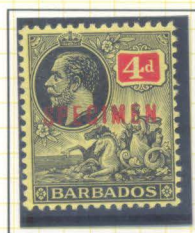
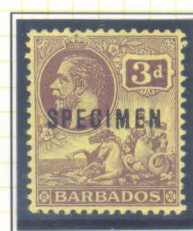
A Duty Die Proof of the 6d in black on glazed card, and dated '4 JUN 12'.



A Duty Die Proof of the 3s in black on glazed card, and dated '25 JUN 12'.

Barbados

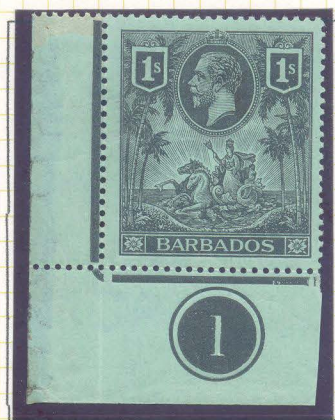
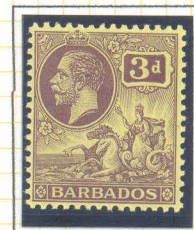
1912 (23 July) – 1916 Perf. 14 Mult Crown CA



The set overprinted **SPECIMEN** with Samuel Type D12 (1/4d to 6d) or Type D12a (1s to 3s).

Barbados

1912 (23 July) – 1916 Perf. 14 Mult Crown CA



Barbados

1912 (23 July) – 1916 Perf. 14 Mult Crown CA

Blocks of these stamps are very difficult to find; this is probably due to the fact that many of the remainder stamps were subsequently overprinted for Revenue purposes. A few do come to hand occasionally though.



A marginal block of 4
of the 1/4d brown.



A Plate 1 block of 4
of the 1/2d green.

Barbados

1912 (23 July) – 1916 Perf. 14 Mult Crown CA



A block of 6 of the 1d red.



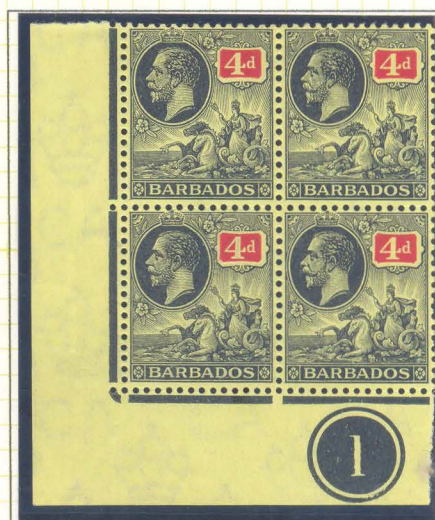
A Plate 1 block of 16 of the scarcer 1d scarlet.

Barbados

1912 (23 July) – 1916 Perf. 14 Mult Crown CA



A Plate 1 marginal corner block of 6 of the 2½d bright blue.



A Plate 1 marginal corner block of 4 of the 4d red and black on yellow.



A Plate 1 marginal block of 10 of the 6d purple and dull purple.

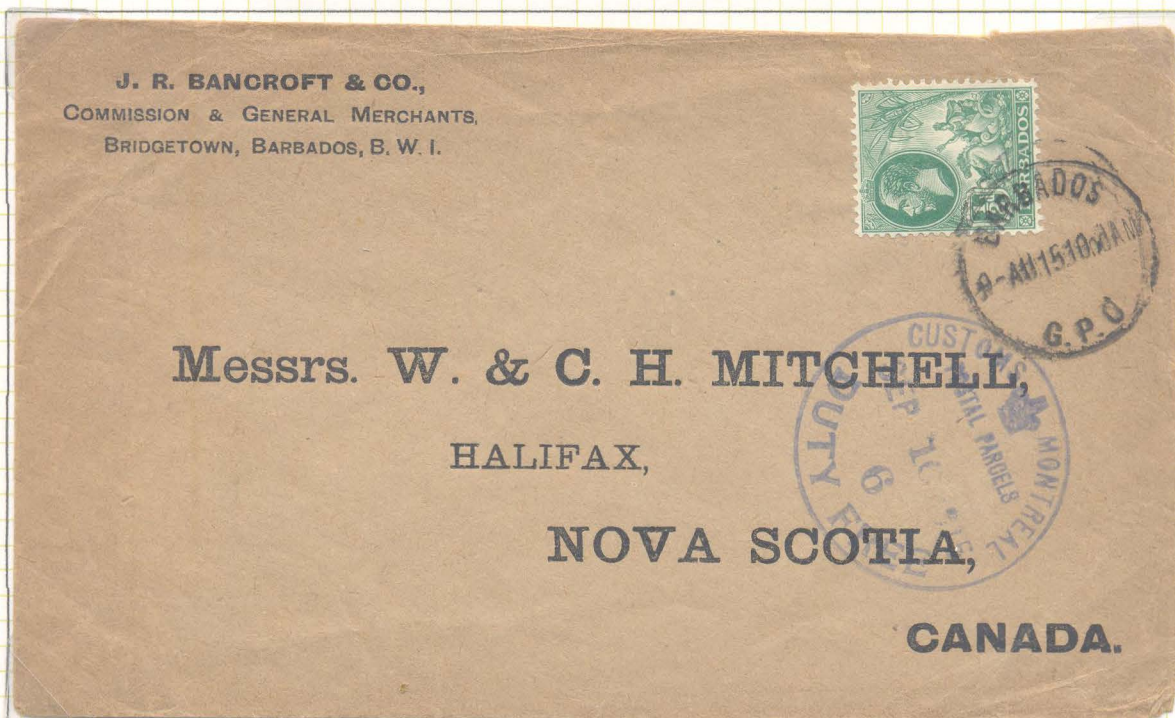
Barbados

1912 (23 July) – 1916 Perf. 14 Mult Crown CA

A picture postcard obviously cancelled by favour, as there is neither an address nor any message on the reverse.



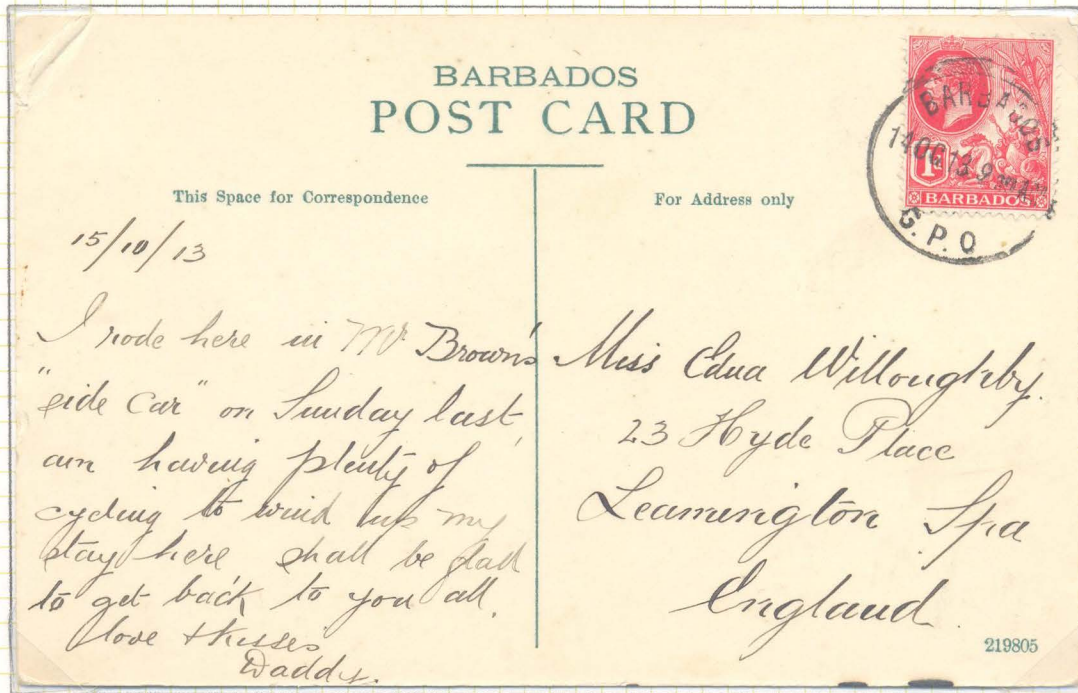
A cover to Canada bearing only a ½d adhesive; perhaps it was exempt normal postage rates as it was not taxed either at the departure nor the destination.



Barbados

1912 (23 July) - 1916 Perf. 14 Mult Crown CA

Two postcards one to the UK and the other to the USA bearing the 1d adhesive.



Barbados

A Postal Stationery Registered Envelope (H&G10a) addressed to the UK with a 1d also showing a 'BARBADOS/R.L.O.' cds of 30 October 1912.



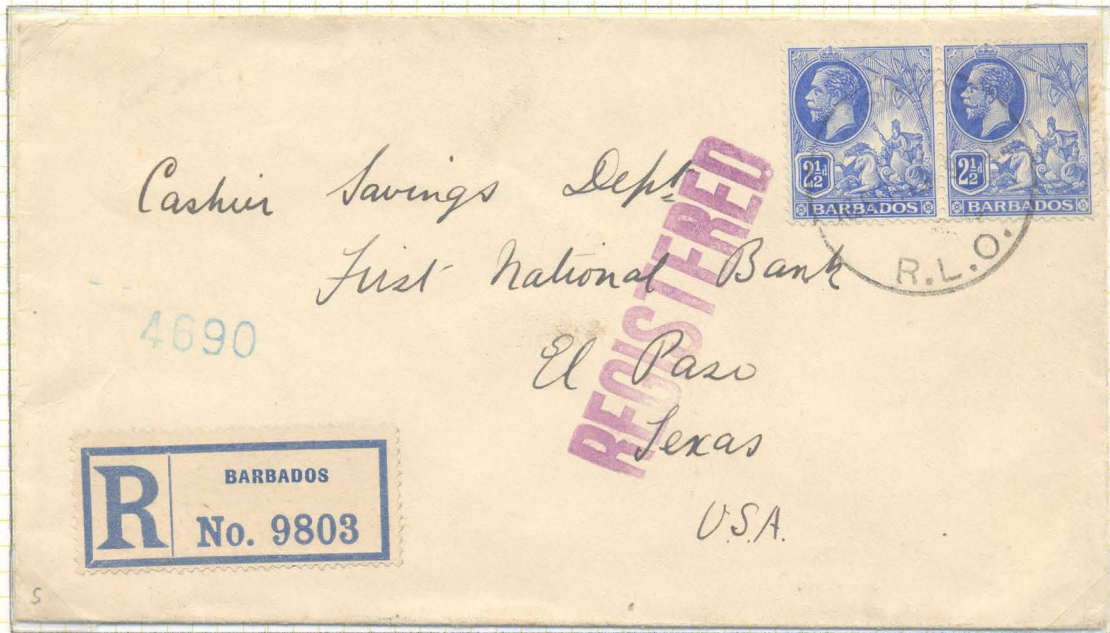
A registered envelope addressed to Kuala Lumpur, Malay States franked with 1/2d, 1d and 2 1/2d adhesives tied by two 'BARBADOS/R.L.O.' cds of 4 February 1914.



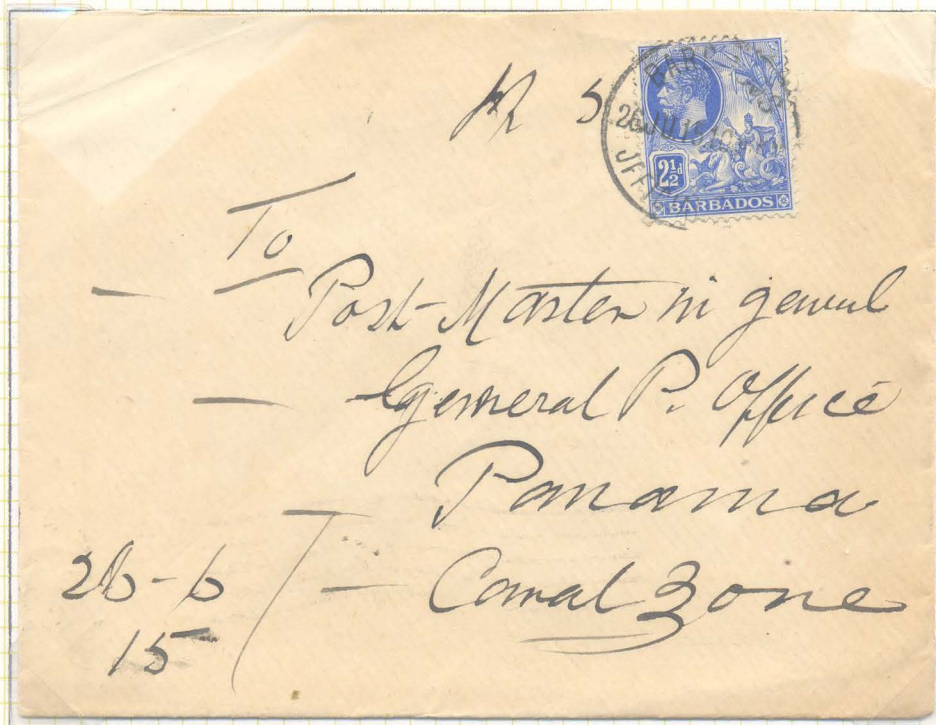
Barbados

1912 (23 July) - 1916 Perf. 14 Mult Crown CA

A registered letter to the USA bearing two 2½d adhesives.



A cover to the Postmaster-General in Panama, Canal Zone.



Barbados

In June 1917 a Bill was introduced into the Legislative Assembly to impose a surtax of 1d on all letters going abroad. To distinguish these War Tax stamps from those currently being used, it was decided to resurrect the 1912 issue and overprint them 'WAR TAX'. There were three printings of these stamps and there is a difference between the first and second insofar as the second was printed in a paler colour on slightly blued paper. There is no evidence that the third printing was ever released.



Due to the fact that these stamps were used as War Tax stamps for just over a year, usages during the period August 1917 to September 1918 are hard to find. They were authorised for use as normal postage stamps once hostilities had ceased.



Barbados

1916. Revenue stamps

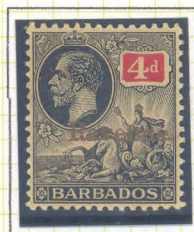
To satisfy the requirement for revenue stamps, the 1912 issue was re-introduced and overprinted 'Revenue.' (13½mm) by the Advocate Company in Barbados. For reasons presumably of clarity this overprint was done in a variety of colours, viz. black, blue, red, gold or red-brown.



1d in black



2d in red-brown



4d in gold



6d in black

Later that year the authorities ordered embossed revenue stamps from Great Britain which were going to be overprinted 'BARBADOS', but these were delayed and as a temporary measure, more of the 1912 issue were overprinted 'Revenue' (16½mm) again in various colours, viz. black, gold or purple.



3d in black

Barbados

1916 Revenue stamps

Shortly after the introduction of the embossed stamps from the UK, there was again a shortage of the 1d and the 1912 2½d blue was overprinted 'Revenue/One Penny'.



The printing was again done locally, and sometimes done poorly with inaccurate positioning of the overprint.



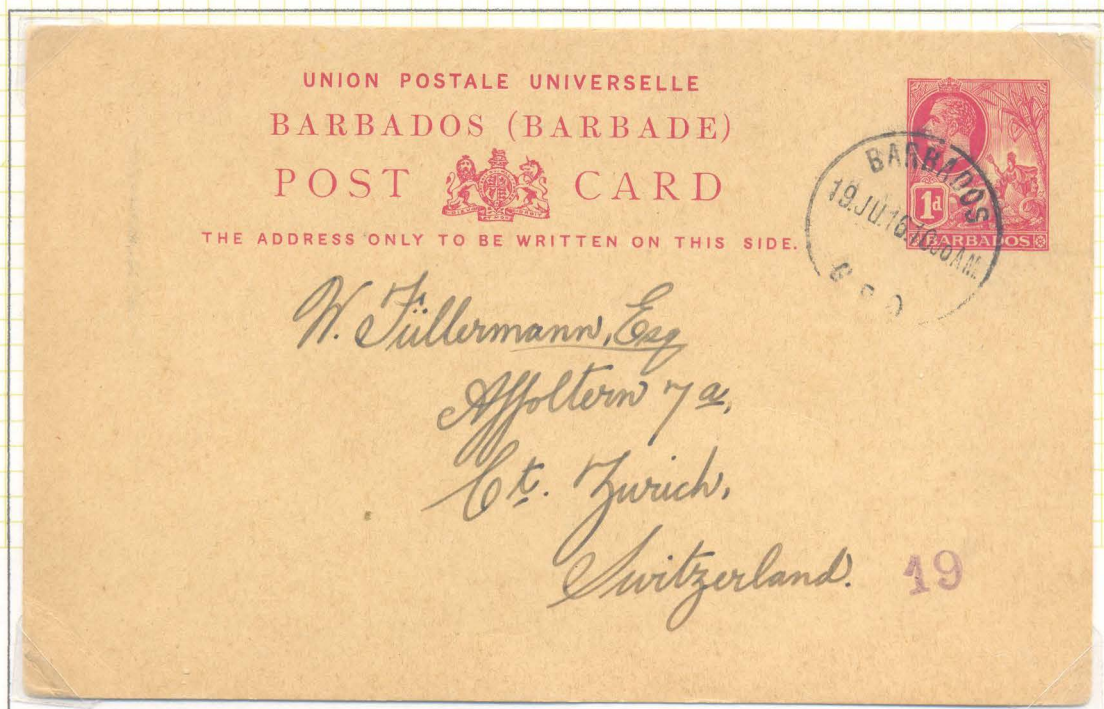
There is also a flaw in the overprint with on occasion a 'v' or a 'u' substituted for the final 'n' in 'Penny'. Although with the font used, the difference between a 'u' and a 'v' is difficult to distinguish.



Barbados

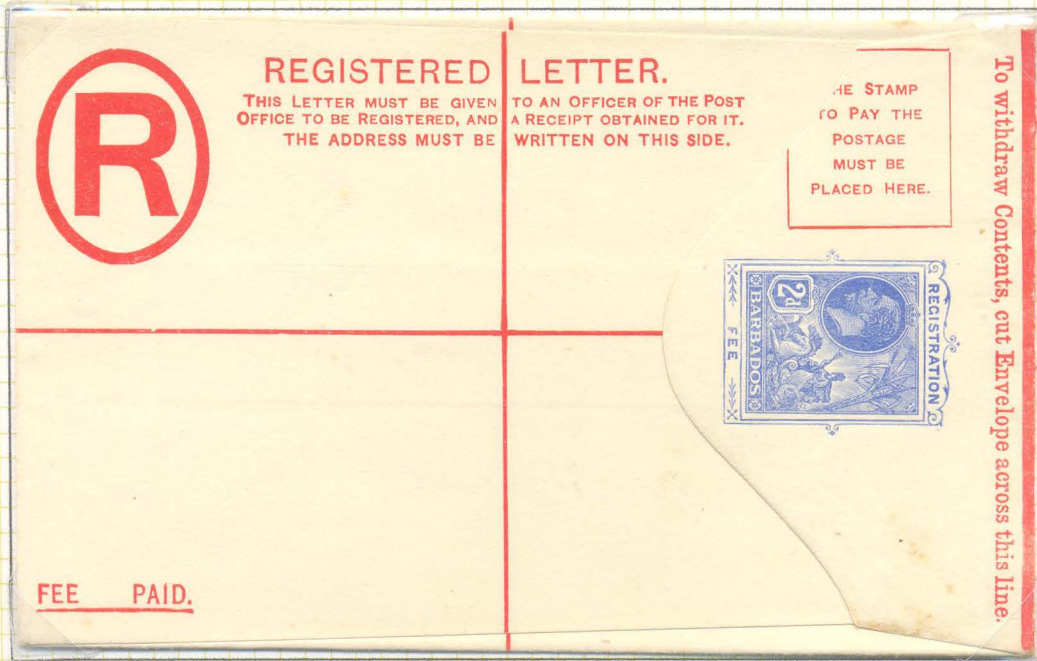


1913 – the 1d postcard was used for overseas destinations; the card below, addressed to Switzerland, describes a series of yacht races.



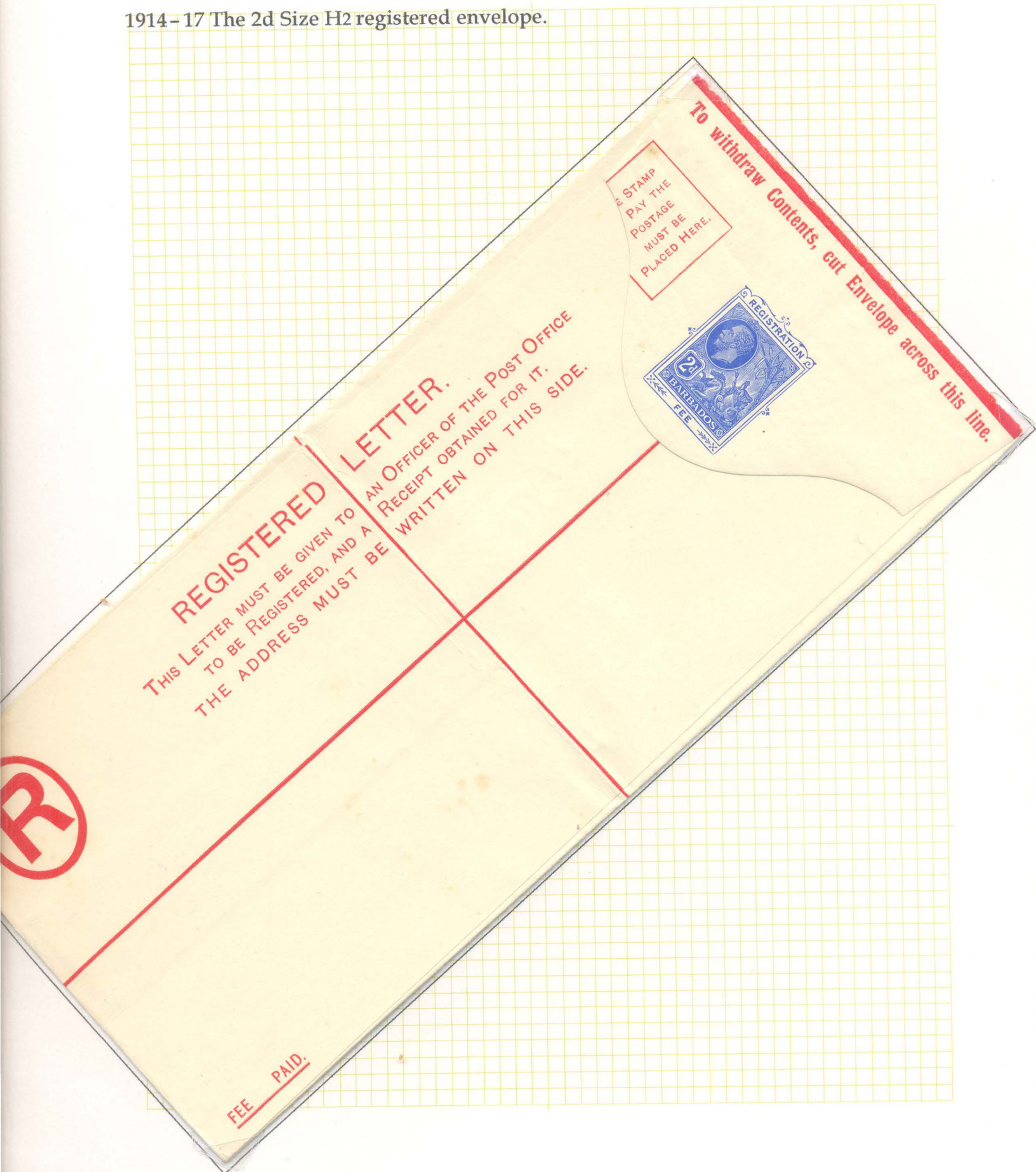
Barbados

1914-17 The first King George V registered envelope was a 2d and showed the Seal of the Colony, with King's head in an oval, all contained in a frame. The flap is at the right and folds to the front. The envelope was made and stamp was printed by De La Rue The two envelopes on this page are Sizes F and G.



Barbados

1914-17 The 2d Size H2 registered envelope.



dos

2d Size I
velope.

To withdraw Contents, cut Envelope across this line.

LETTER.

AN OFFICER OF THE POST OFFICE
RECEIPT OBTAINED FOR IT.
WRITTEN ON THIS SIDE.

REGISTERED

THIS LETTER MUST BE GIVEN TO
TO BE REGISTERED, AND A
THE ADDRESS MUST BE



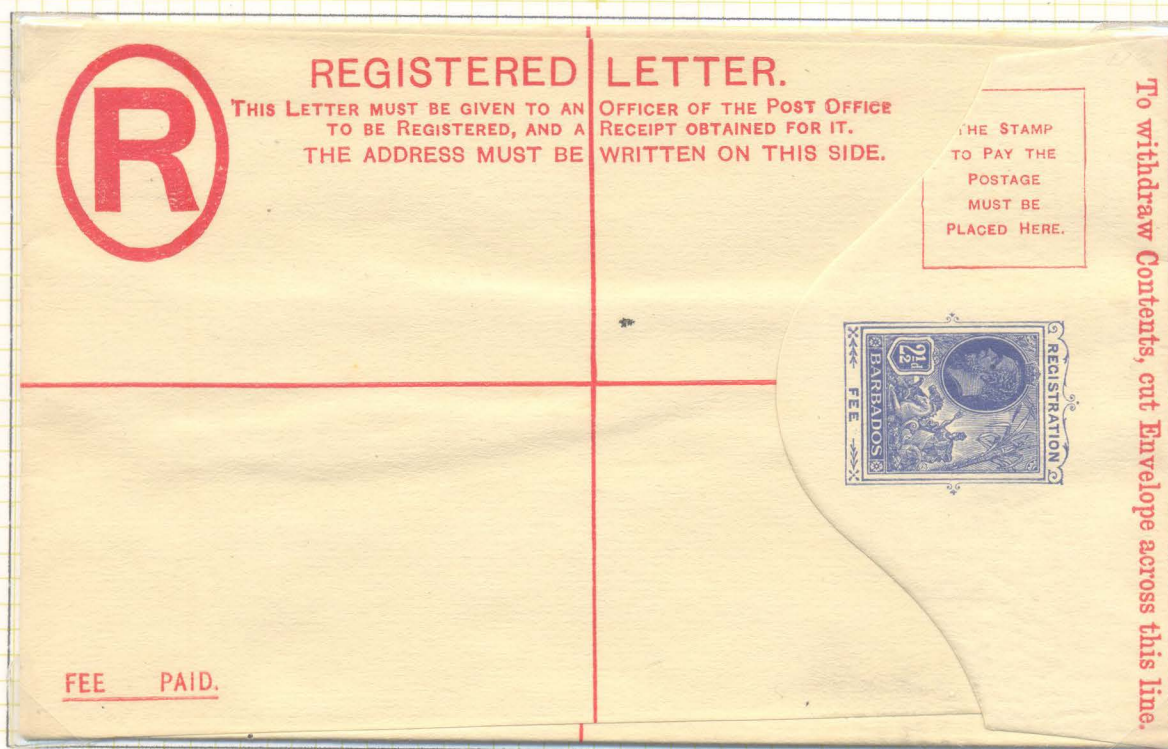
THE STAMP
TO PAY THE
POSTAGE
MUST BE
PLACED HERE.



FEE PAID

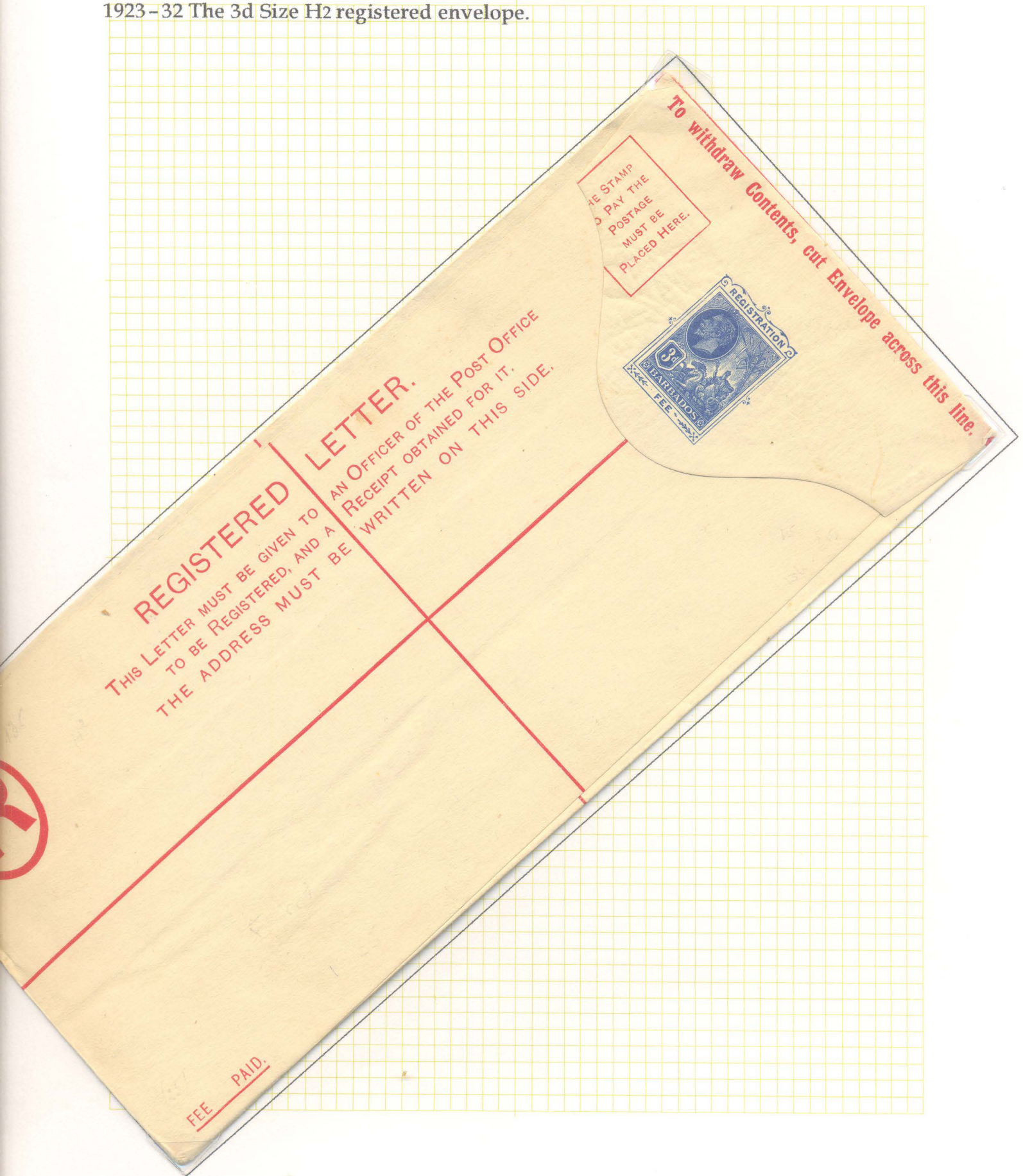
Barbados

1923-32 Later the registration fee was increased to 2½d. These two envelopes are Sizes F and G.



Barbados

1923-32 The 3d Size H2 registered envelope.



Barbados

1923-32 The 3d Size H registered envelope, overprinted 'SPECIMEN' on the reverse.

