

BRITISH HONDURAS – KGV Postmarks

Dr Ian Matheson

We have recently read of the scarcer postmarks of KGV in the BCPJ. This short exhibit shows a few of the less common markings of the KGV period, although a little licence has been taken to extend the dates in a couple of cases. The major District post offices have been omitted. All items in the KGV period range from scarce to “impossible to find”!!

Note that all pages shown are photocopies. If any member wishes further details about any item please contact me in person or at ian@cdi.biz.

BANANA BANK

Proud describes two temporary rubber datestamps, used between 1936 and 1939. He reports only one sighting of the earlier type (the upper cover on this page). However, although each type has slightly different dimensions, it is probable that deterioration of the rubber has caused the dimensional differences and that there was only one instrument (TDC-27) used during this period.



ERD = 31 October 1936 LRD = 5 December 1939

Type TDC-27



31 October 1936. Commercially used cover from Banana Bank to USA. Stamps are cancelled with type TDC-27 datestamp (earliest recorded date). Backstamped in transit through Belize (2 November). Five cents US letter rate.



5 December 1939. Registered philatelic cover from Banana Bank to UK. Stamps are cancelled with type TDC-27 datestamp (latest recorded date). Backstamped in transit through Belize (7 December). Four cents GB & Empire letter rate + five cents registration.

BAKERS → BOOM

A post office was opened at Bakers on the Belize (Old) River. A small steel datestamp was proofed in London for this office on 6 May 1903. Obviously there were expectations that this would be a significant office. However, only one doubtful strike has been reported to date.



Type SC-2a
(reproduction of proof strike from GPO records in London)

The post office was moved to (Burrell) Boom from 22 October 1906. Proud reports that the office was temporarily closed from 30 April 1912. The first recorded Boom postmark is the cover below.



18 April 1919. Commercial cover from Boom to USA. The adhesive is cancelled with the **only recorded strike** of the Type TDC-1 Boom datestamp. The addressee gives his address as "Baker, Old River". Back-stamped in transit through Belize on 22 April 1919 (Type BSC-12 in blue, recorded 11-22 April 1919)

Type TDC-1: ERD = 18/4/19 LRD = ---



Blue-grey.



Type TDC-10
ERD = 29/7/27
LRD = 14/9/29

BOOM



29 July 1927. Registered philatelic cover from Boom to USA. Adhesives struck with the earliest recorded strike of type TDC-10 Boom datestamp in brown. Stamped in transit through Belize (30 July) and backstamped in New Orleans (8 August) and Downingtown (10 August). Registration label applied in Belize.



8 December 1939. Registered philatelic cover from Boom to UK. Adhesives struck in purple with the only recorded date of type TDC-18 Boom datestamp. Stamped in transit through Belize (11 December). Registration label applied in Belize.

Type TDC-18: ERD = 8 December 1939 LRD = ---



CALEDONIA

Proud reports that the PO was opened in 1894, but GPO records show that three letters were received from Caledonia to an Estevan in Feb 1892. The earliest recorded postal items are a couple of incoming covers dated 1911, one of which bears a type TSL-1 handstamp. Caledonia was one of the stopping points on the Belize New River between Corozal and San Estevan.

CALEDONIA



Type TSL-1
ERD = 1/8/11
LRD = ---



30 August 1911. Early local cover sent from Orange Walk to Caledonia on the Northern Mail Service steamer. Although the journey was only fifteen miles the trip lasted about ten hours. 2c inland letter rate.



Violet

Type TDC-5
ERD = 5/4/16
LRD = 9/7/19

9 July 1919. Commercial cover from Caledonia to USA cancelled with type TDC-5 datestamp in black (only recorded cover and latest recorded date). Three cents letter rate.

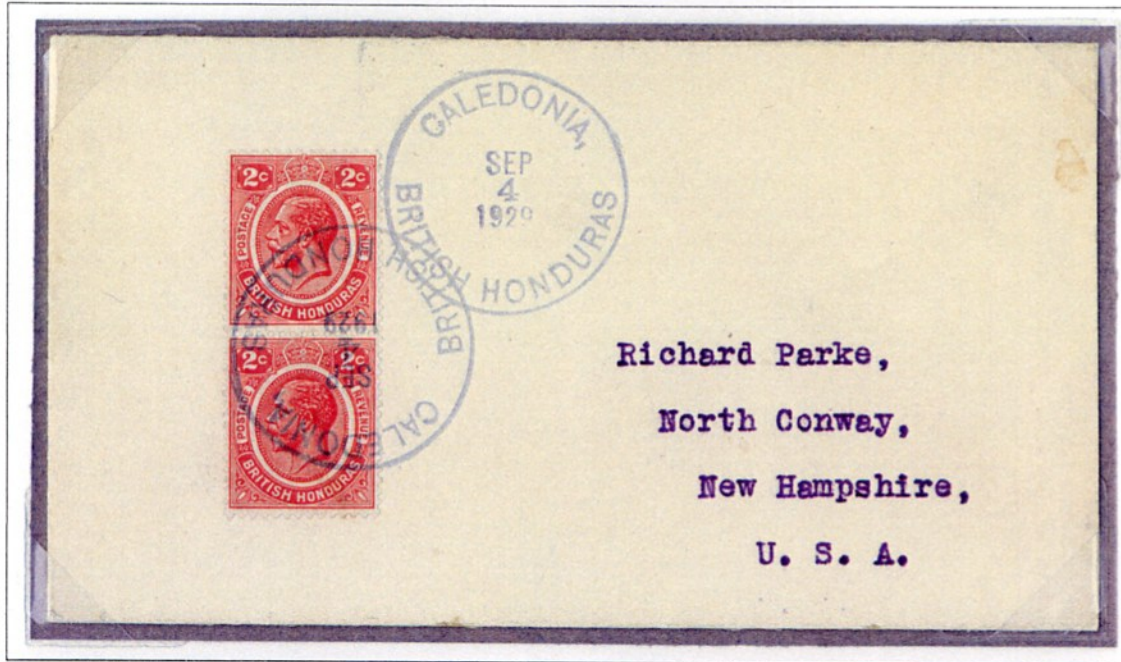
CALEDONIA



Date struck separately

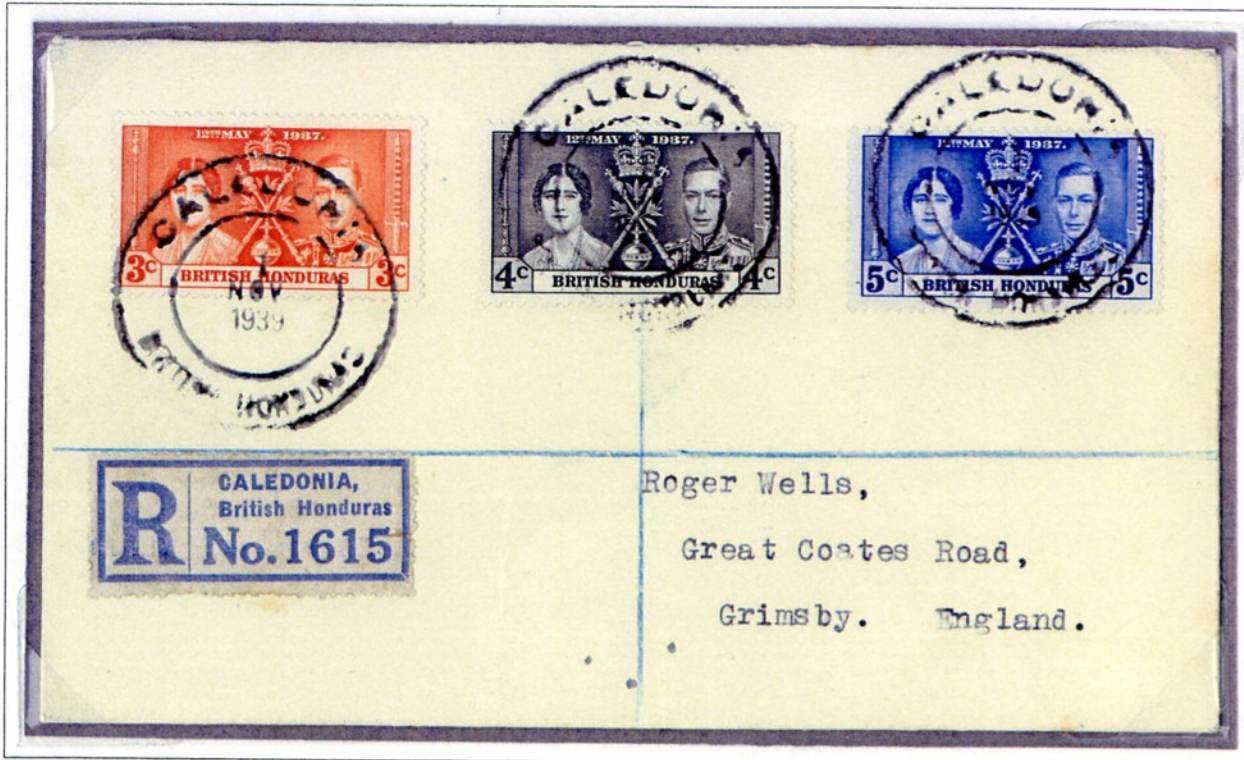


Type TDC-12
ERD = 23/8.22
LRD = 9/5/23



Type TSC-1
ERD = 13/7/27
LRD = 4/8/31

4 September 1929. Philatelic cover sent from Caledonia to USA, postmarked with type TSC-1.



1 November 1939. Philatelic cover from Caledonia to UK cancelled with type TDC-24 datestamp

Type TDC-24 ERD = 13/11/35 LRD = 1/11/39

CAYE CAULKER

There was no regular mail service to Caye Caulker. It was reported in 1907 that the mail service was "irregular" and in 1924 that the mail services were by dorey (dugout canoe), "whenever the opportunity arose". A "K.c.p.o." (Key Caulker PO?) endorsement has been seen on a stamp dated 15 April 1903, but there is no evidence that it was used at Caye Caulker.

Type SC-2a: The first datestamp was proofed in London on 6 May 1903 and so was probably introduced in June or July. It is only recorded with code C. "CAY" is spelt without a final "E"

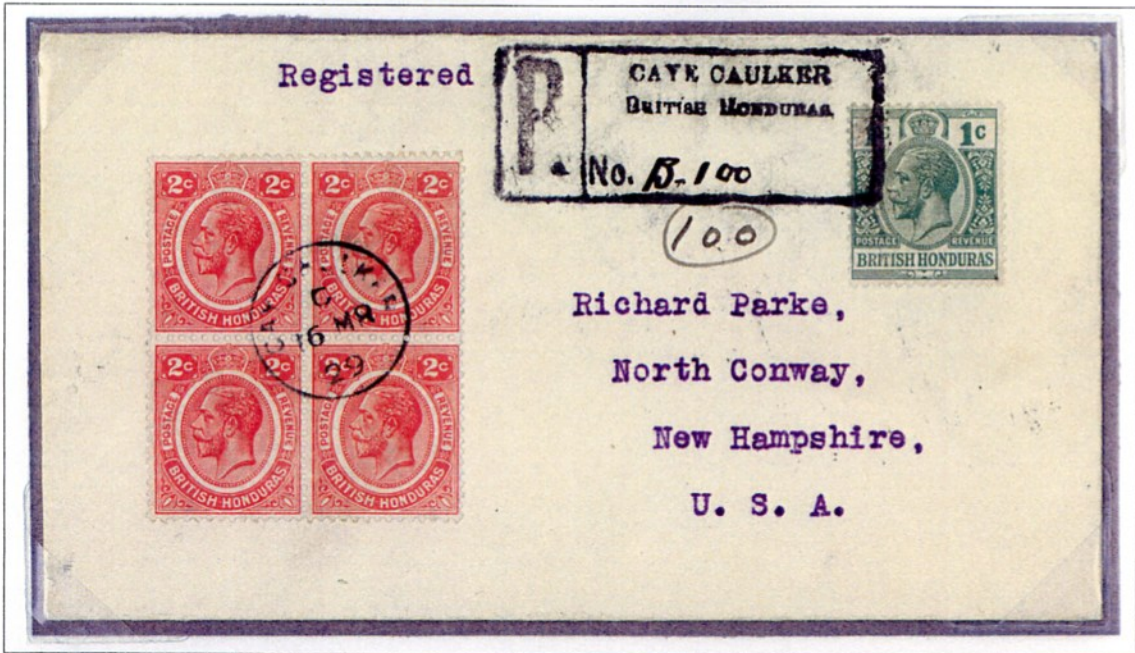


Earliest recorded date



Violet ink

Type SC-2a
 ERD = Oct 1903
 LRD = 3/7/29



16 March 1929. Philatelic registered cover from Caye Caulker to USA. 9c rate = 4c postage + 5c registration.



3 July 1929. Commercial front from Caye Caulker to UK. 3c rate to UK. Latest recorded date for type SC-2a.

BERMUDIAN LANDING → DOUBLE HEAD CABBAGE

A postal collection was established at Double Head Cabbage (named after a cabbage palm with a split trunk) on the Belize River from 22 October 1906. No postmarks from this period are recorded. It is believed that mail was handled at Isabella Bank. The PO was transferred to Bermudian Landing on 1 Feb 1921, where it operated until 12 June 1923, when a PO was opened in Double Head Cabbage. Four stamps have been recorded with part strikes of a Bermudian Landing postmark



Type TDC-10
 ERD = 31/12/22
 LRD = 27/2/23



10 June 1932. Registered cover from Double Head Cabbage to Scotland bearing nine cents in Belize Relief Fund adhesives to pay the 4c postage plus 5c registration fee. A Bermudian Landing registration handstamp was applied (three recorded) plus a type TDC-12 Double Head Cabbage postmark, struck in black. The word "OFFICE" is misspelt (see illustration below), and the date is struck separately (year omitted). Backstamped in transit through Belize (13 June) and New York (22 June).

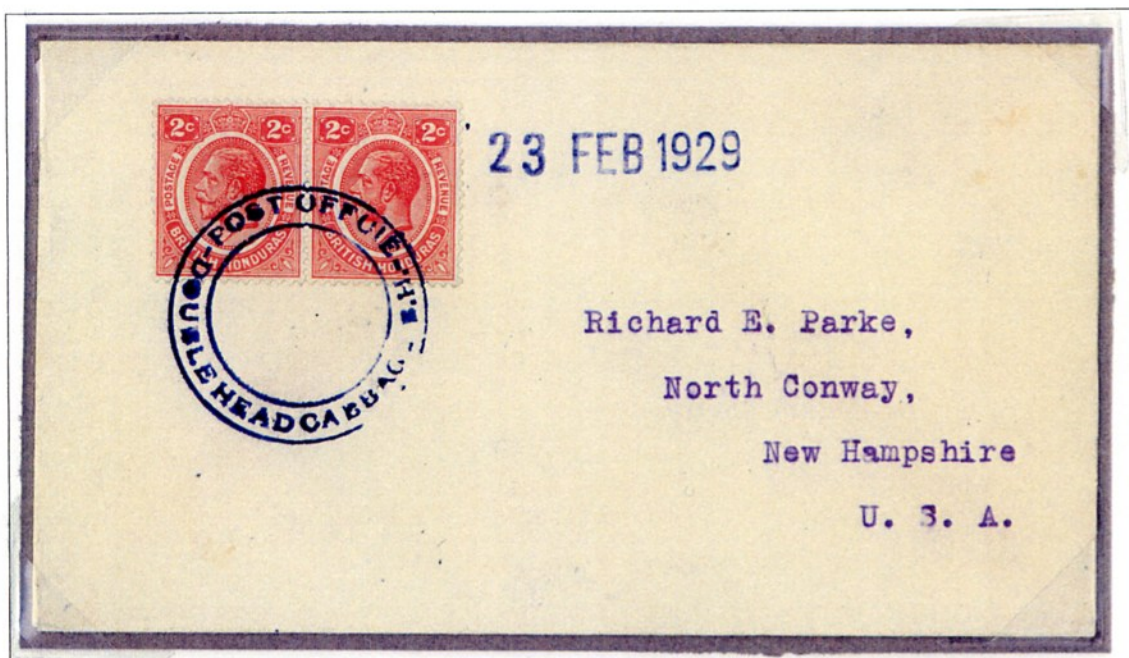


Type 1 Handstamp
 ERD = 2/4/28
 LRD = 10/6/32



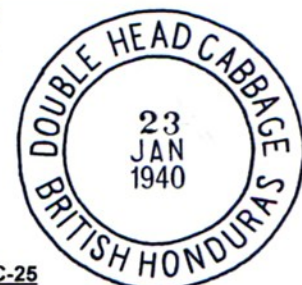
Type TDC-12
 ERD = 8/8/27
 LRD = 10/6/32

DOUBLE HEAD CABBAGE



Type TDC-12
 ERD = 8/8/27
 LRD = 10/6/32

23 February 1929. Philatelic cover from Double Head Cabbage to USA with type TDC-12 struck in purple instead of the usual black. Backstamped in transit through Belize (25 Feb). There is also an additional strike of the type TDC-12 Double Head Cabbage postmark on the reverse. The datestamp is struck separately (on front only). Four cents US letter rate.



ERD = 9 September 1935 LRD = 23 January 1940

23 January 1940. Philatelic cover from Double Head Cabbage to USA with the stamps cancelled by type TDC-25. Backstamped in transit through Belize (25 Jan). Five cents US letter rate.

Type TDC-25

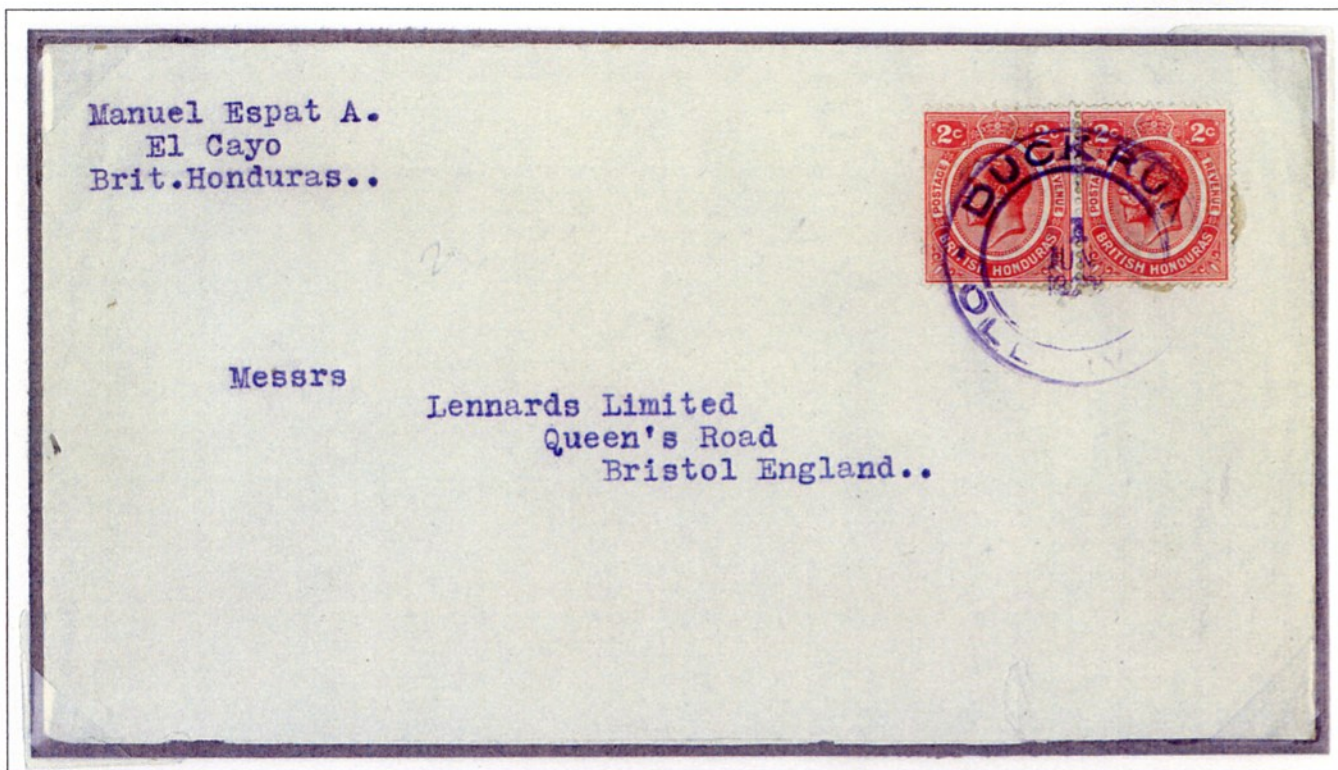
DUCK RUN

Duck Run is on the Belize River (Old River) about 106 miles from Belize. The PO opened on 1 May 1929, but the closure date is unknown. Three covers are recorded. 1932 dates were in manuscript.

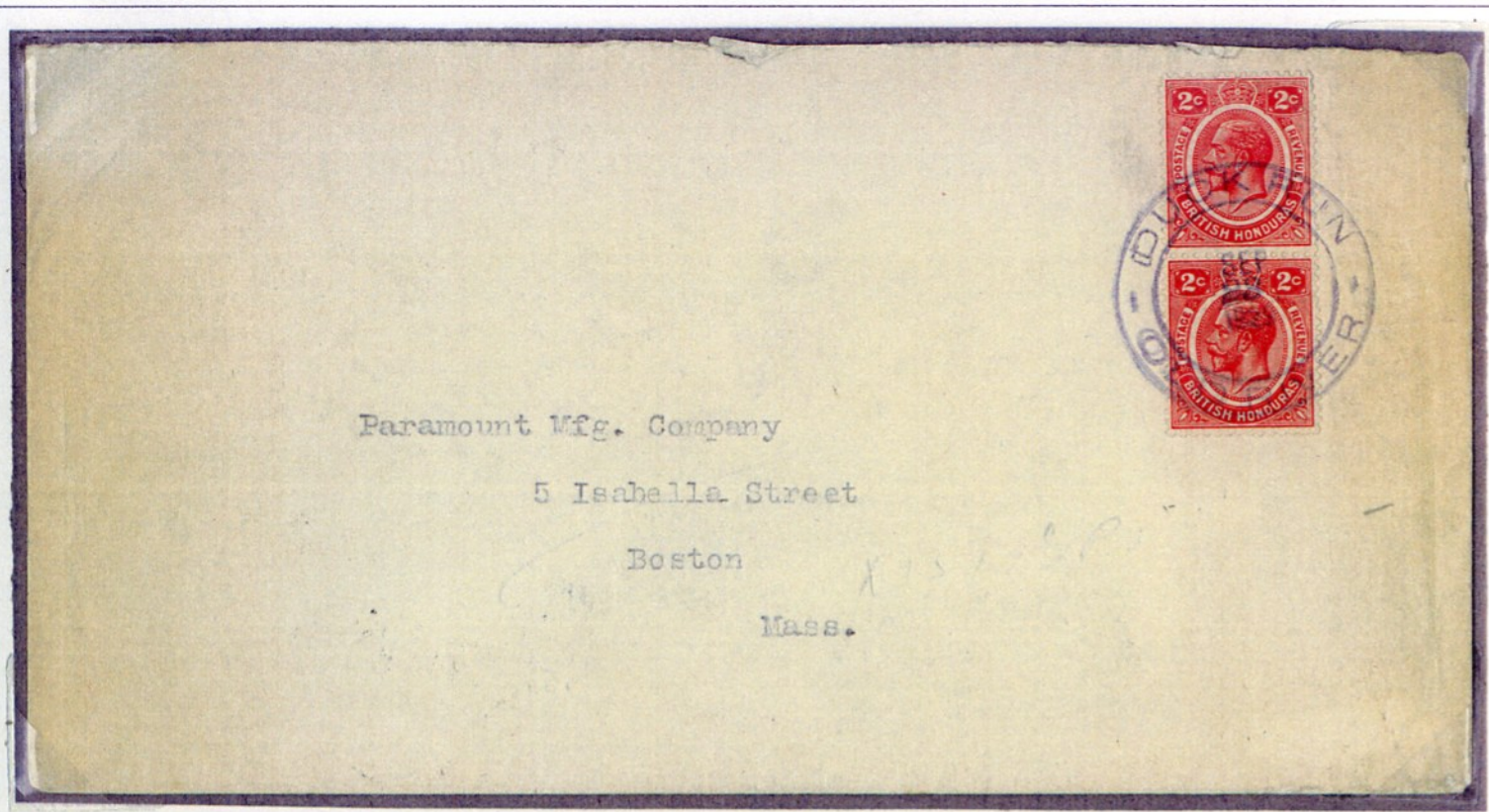


Manuscript date

Type TDC-19: ERD = 1 June 1929 LRD = 24 March 1938



1 June 1929. Cover to England from Duck Run. The two 2c adhesives are cancelled with a type TDC-19 datestamp (earliest recorded date) . The four cents GB & Empire letter rate was introduced on 1 June 1921. Backstamped in Belize (5 June).



23 September 1929. Cover to USA from Duck Run. The two 2c adhesives are cancelled with a type TDC-19 datestamp (latest recorded date on cover) . The USA postal rate enjoyed the GB & Empire concession rate of four cents from 1 June 1921 until it was increased to 5c on 1 November 1931. Backstamped in Belize (25 September) and Boston (5 October).

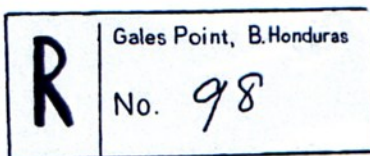
GALES POINT

Although situated south of Belize, Gales Point was not on the Southern Mail Service. Mails were transported directly from Belize by sea and then up the Manatee River to the Gales Point postal station on Manatee Lagoon. In 1924 the mail services were listed as "whenever there is an opportunity by sailing boat". The station was opened on 2 October 1908.

Type TDC-1
 ERD = 28 January 1911
 LRD = 2 March 1922



25 November 1916. Registered commercial cover from Gales Point to USA. Eight one cent War adhesives are applied to meet the 8c rate (5c registration plus 3c postage). The stamps are cancelled with the type TDC-1 datestamp (believed to be the only surviving cover). Backstamped with the "BELIZE, B.H. / REG. DIV." datestamp (28 Nov), New Orleans (4 Dec) and Chicago (6 Dec) transit marks. This is also the only recorded strike of the type H1 registration handstamp.



Type H1 registration handstamp

GALES POINT

This datestamp was struck first in violet, then later in black.

Type TSL-1: ERD = 19 July 1927 LRD = 12 November 1939



Early strike in violet.



September 1932. Cover from Gales Point to Scotland with type TSL-1 datestamp struck very lightly in violet over two Relief Fund definitives (four cents letter rate) Backstamped in transit through Belize on 8 September 1932.



14 February 1936. Cover from Gales Point to England with type TSL-1 datestamp struck in black (four cents letter rate) Backstamped in transit through Belize on 15 February 1937.

GRACIE ROCK

This village is situated on the Sibun River about 32 miles from Belize. The post office was opened on 26 August 1913, but the earliest recorded strike of a Gracie Rock postmark is 1922. It is reported that in 1924 the mail service was by dorey (dug-out canoe) "whenever the opportunity arises".

The first postmark types TDC-15 and TDC-15a were made with the same outer instrument, but employed different datestamps. It appears as if both were used concurrently.

Type TDC-15
ERD = 7 December 1922
LRD = 29 August 1931



This is one of four recorded strikes and is the only copy on piece. The others are on stamp only.



Type TDC-15a
ERD = July 1926
LRD = ---

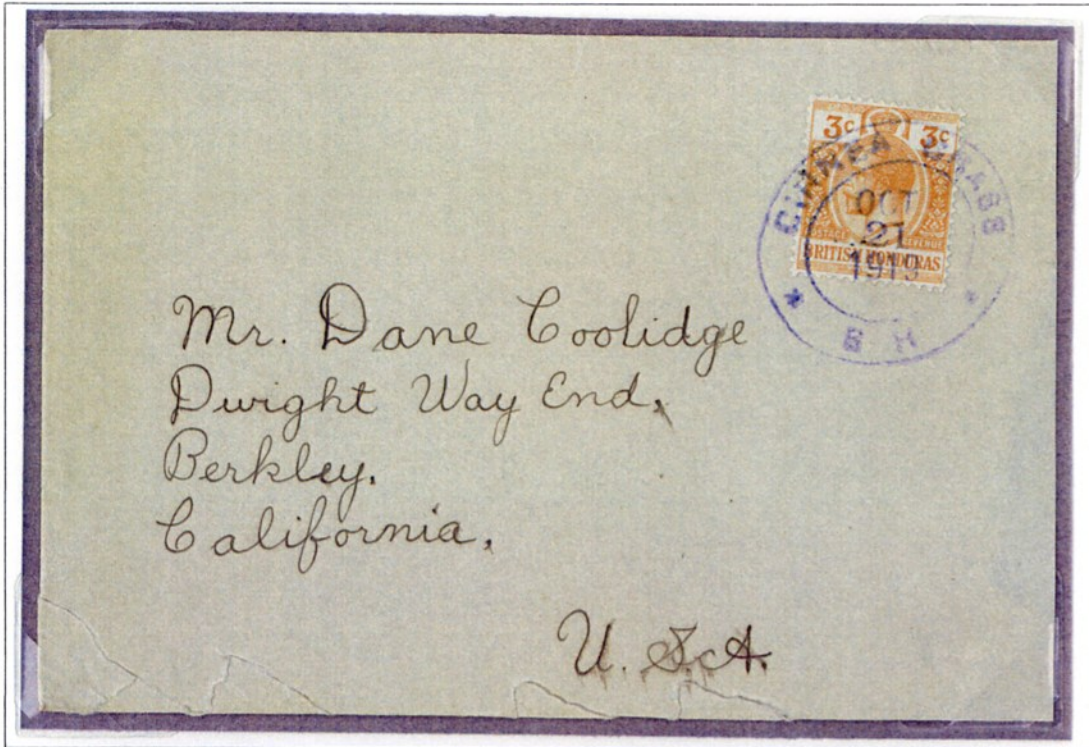


Only recorded example



GUINEA GRASS

Guinea Grass was the terminal office on the Belize New River Mail Service. Mail was carried by mail-boat as far as Orange Walk, and then by Mr Masson's dorey (dugout canoe) thereafter. The first datestamp was the type below, severely distorted in later years.



Type TDC-1
 ERD = 11/4/11
 LRD = 7/1/21

21 October 1919. Commercial cover from Guinea Grass to USA. Cancelled with type TDC-1 datestamp. Three cents letter rate.

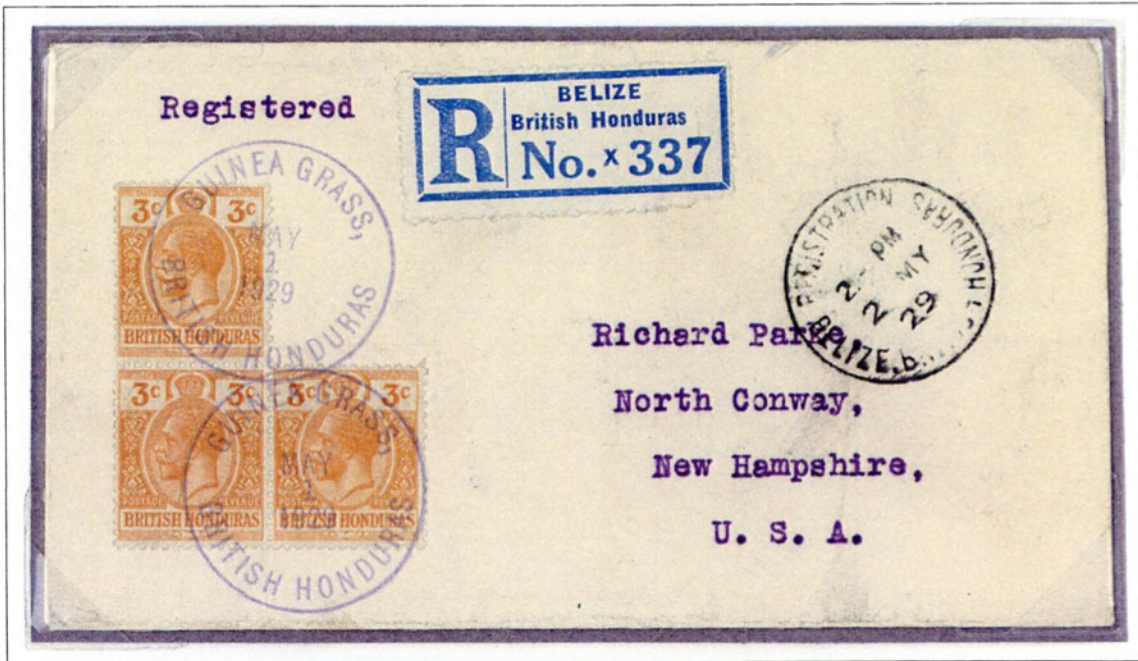


9 March 1920. Commercial cover from Guinea Grass to USA. Cancelled with type TDC-1 datestamp (year inserted in manuscript). Three cents letter rate.

GUINEA GRASS



Type TSC-1
ERD = 11/4/11
LRD = 7/1/21



1 May 1929. Philatelic cover from Guinea Grass to USA. Cancelled with type TSC-1 datestamp. Nine cents rate = 4c postage + 5c. registration.

Type TDC-24 datestamp



Type TDC-24
ERD = 9/10/35 LRD = 24/11/39

ISABELLA BANK

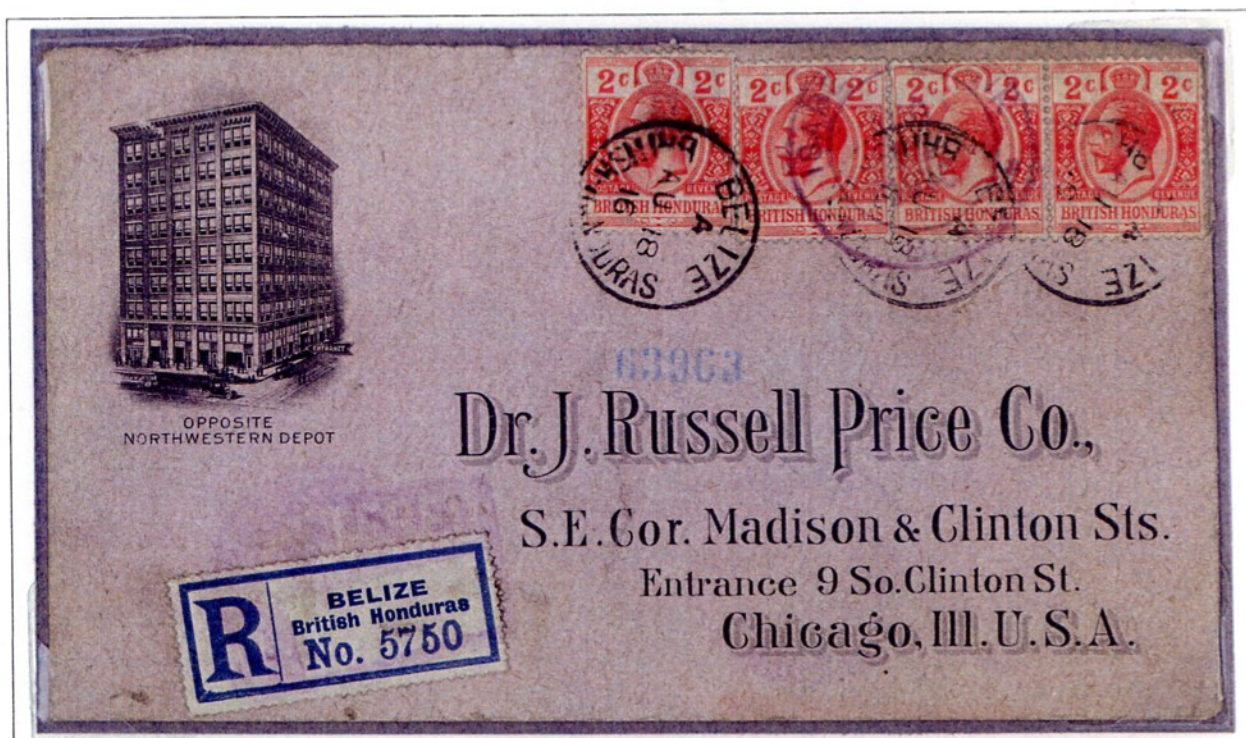
Proud reports that the Isabella Bank post office was known as Little Falls until 1908 and was included in the Belize River mail service. Isabella Bank served the following offices – Rancho Dolores, Spanish Creek, Revenge, Limonal, Crooked Tree, Scotland, Liberty Hall, Burn's Pen, Lime Walk, Flower's Bank, Rodney Bank, Bamboo Patch, Hunts Bank and Garbutt's Bank, none of which had its own canceller as they were simply collection and distribution points. Crooked Tree had its own post office from about 1947. This is the only postmark used by the office.



Type TDC-1

ERD = 26/10/11

LRD = 14/8/16



14 August 1916.. Commercial registered cover from Isabella Bank to USA. Cancelled with type TDC-1 datestamp. The stamps were further cancelled in transit through GPO Belize four days later (possibly because Isabella Bank had only cancelled two of the four adhesives), and the registration etiquette was added.. Eight cents franking covers 3c postage + 5c registration fee. **This is the latest recorded date of the postmark and the only recorded cover.**

The post office was closed on 31 January 1921 and moved to Bermudian Landing.

MULLINS RIVER

There was a post office at Mullins River as early as 1889, but no postmarks are recorded until about twenty years later.



Type TDC-10
 ERD = 31 December 1919
 LRD = 16 November 1923



Latest recorded date
No covers recorded



27 September 1931. Cover from Mullins River to Scotland. Backstamped later the same day at Stann Creek (type DC-2). The Belize Relief Fund adhesives are cancelled with the type TDC-11 Mullins River datestamp.

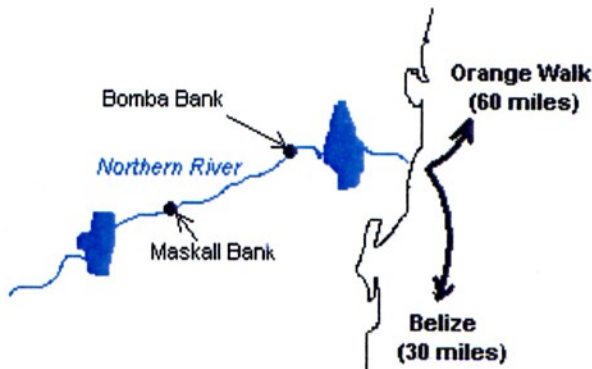


Type TDC-11
 ERD = 27 July 1927
 LRD = 22 November 1936

THE NORTHERN RIVER SERVICE

NORTHERN RIVER DATESTAMP

Approximately one third of the way from Belize to Corozal lies the Northern River. Although a part of the "Northern Mails" the offices on this river were not served by a regular service. A small steel datestamp inscribed "NORTHERN RIVER" was proofed in London on 6 May 1903 and dispatched to the Colony on 23 May. Proud speculates that the datestamp was used at Maskall Bank, but it is more likely that it was used as a TPO, as a strike is known on a 1920 cover from Bomba to USA. The "Postmaster" was the local senior constable and he was paid \$12 p.a. for the job. The mail was taken by whatever sailing boat was available as no regular vessel was provided. Post Office records for Oct 1922 have been found and show that the postal receipts for Northern River and Bomba offices totalled 14c!



Copy of strike ex Proof Book.

Type SC-2
ERD = 24/9/13 LRD = 5/10/27
(Philatelic strikes exist dated 12/11/39)



24 September 1913. Cover sent from Maskall Bank to USA. Franked with 2c adhesive. UPU letter rate was 5c, hence application of the Type PD2 tax mark in transit through GPO Belize, and application of 6c US precancelled postage due labels (double deficiency). Cover is cancelled with the Northern River TPO datestamp (**earliest recorded date**). Backstamped in Belize (30 Sept) and New Orleans (6 Oct).

THE NORTHERN RIVER SERVICE

BOMBA, NORTHERN RIVER

The post office at Bomba Bank was opened by 1917 and closed in 1951 after the school closed and no other accommodation was available for a post office. Early mails were collected by the Northern River TPO, whenever a suitable sailing vessel was available.



ERD



Purple



Black

Type TDC-8
ERD = 30/5/17 LRD = 26/1/20

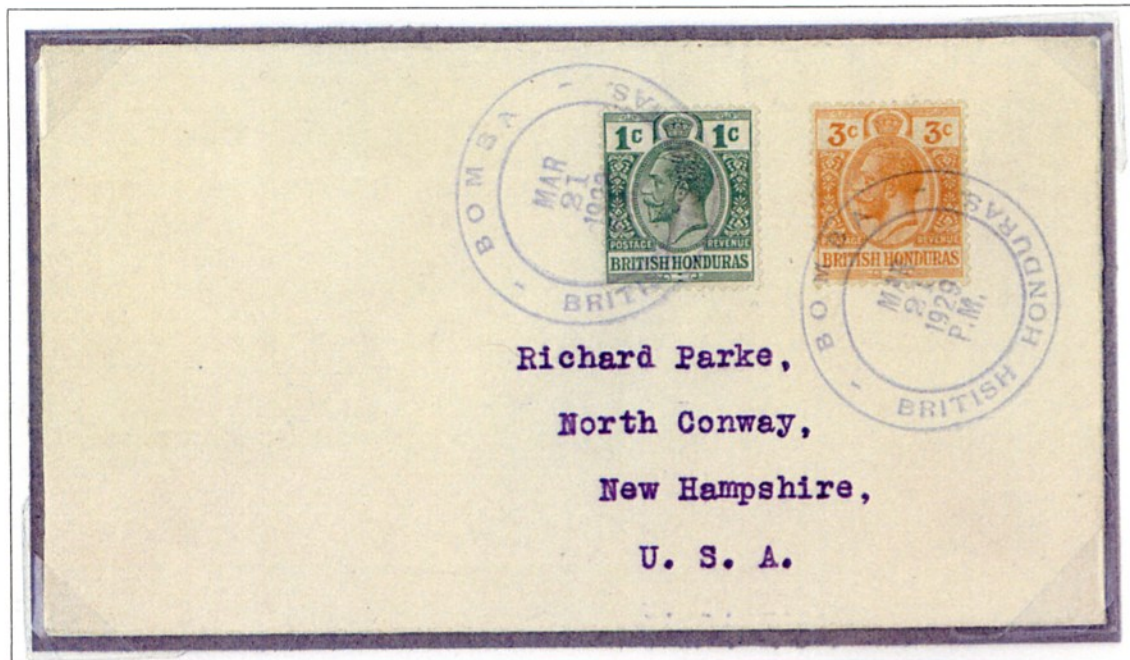


26 January 1920. Commercial cover from Bomba Bank to USA. Stamps cancelled with Bomba type TDC-8 (additional fine strike on reverse). **Latest recorded date.** The cover also bears a light strike of the type DC-2 datestamp of the Northern River TPO (date plugs not set for January. – maybe the previous use was in April the year before!) Backstamped at GPO Belize (28 January). **Only recorded cover with type TDC-8.** Rated three cents (US letter rate).

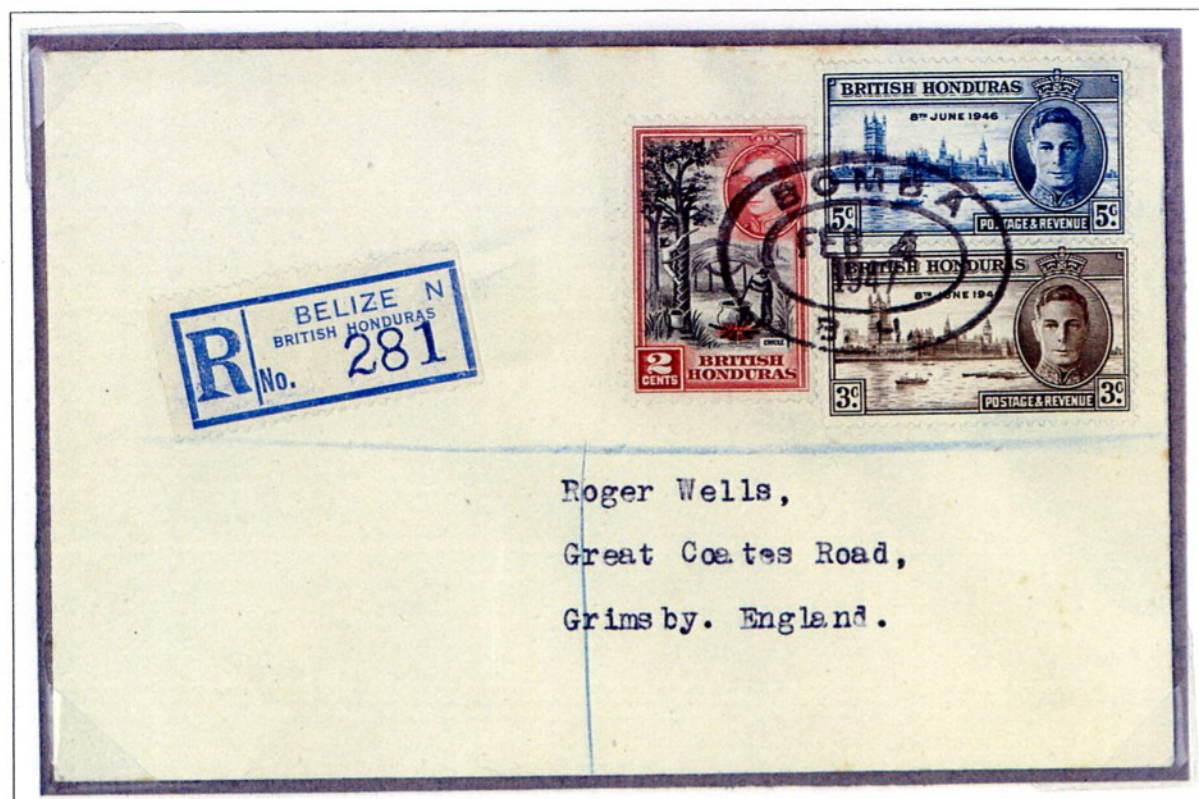
THE NORTHERN RIVER SERVICE

BOMBA

The type TDC-8 datestamp of Bomba Bank was replaced in the 1920's by type TDC-11 with the date in four lines. Only four covers are recorded so far, and all are philatelic. No postmarks are recorded used between 1929 and 1947, indicating the paucity of correspondence.



21 March 1929. Philatelic cover from Bomba Bank to USA. Stamps cancelled with type TDC-11. Latest recorded date. Backstamped at GPO Belize (22 March). Rated four cents (US letter rate).



4 February 1947. Philatelic cover from Bomba Bank to UK. Registration label added in transit through GPO Belize. Stamps cancelled with type TDO-1 (date in two lines). Latest recorded date.

THE NORTHERN RIVER SERVICE

MASKALL BANK

Even by the late 1920's and 1930's there was no mail service to and from the Northern River, so mail was carried by whatever boat became available. However, the post offices at Maskall Bank and Bomba Bank remained open. Very few postmarks survive. The first recorded postmark specifically inscribed "MASKALL BANK" is known used from 1923 to 1929, but was probably in use for much longer than the recorded dates as the next recorded Maskall datestamp is dated in the 1940's. It can be seen from the single and from the cover that the frame of the postmark also appeared in the strike.



<u>Type TDC-18</u>	
ERD = 27/6/23	LRD = 17/2/30



8 January 1930. Cover from Maskall Bank to Canada cancelled with Maskall type TDC-18 datestamp. The cover also bears a handstruck Maskall registration mark (registration no. 104). It is interesting to note that the only other recorded strike of this mark is dated 12 November 1939 and the registration number is 128, suggesting that there were only 24 registered letters in almost a decade. The letter was backstamped in transit through Belize (9 January), New York (16 January) and Edmonton (20 January). The cover bears two different Canadian "Not called for" handstamps and a straight line "Not in Directory", and was sent to Ottawa Dead Letter Office on 28 January. On 31 January it was posted back to the sender. It received transit marks of Belize (11 February) and Maskall (17 February) the **latest recorded date of type TDC-18**. The GPO at Belize applied a type RTS-3 pointing hand handstamp ("Returned to Writer").

PROGRESO, LOWRY'S BIGHT

PROGRESO B. H.

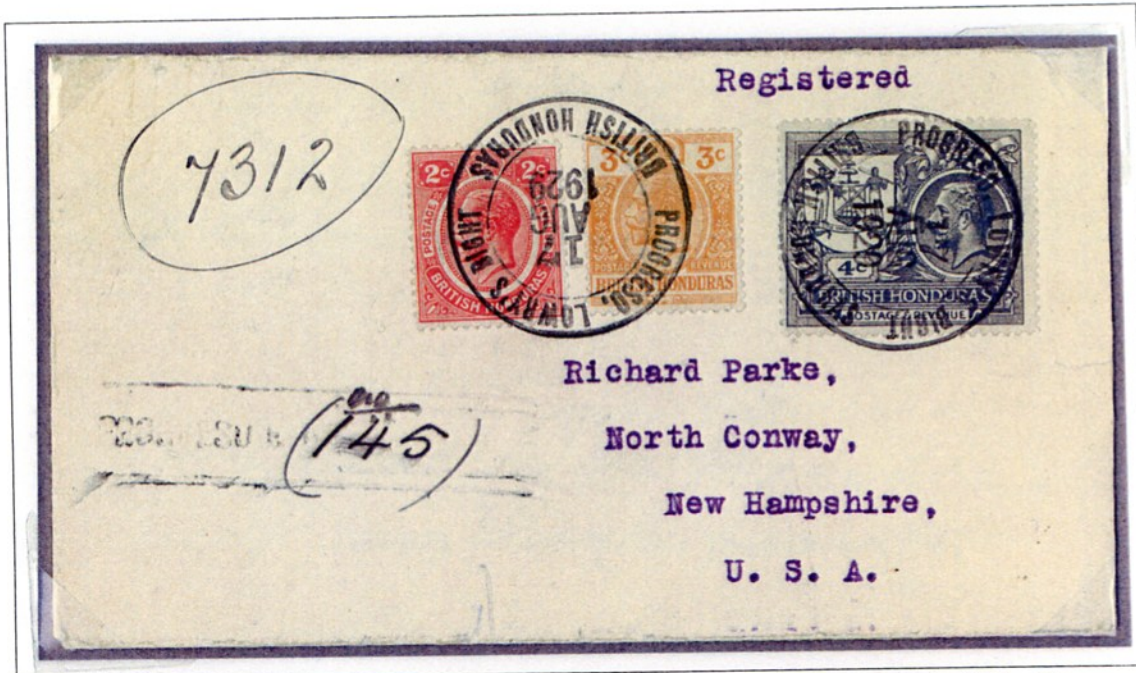
Type TSL-2

ERD = 1/10/12 LRD = 17/8/29

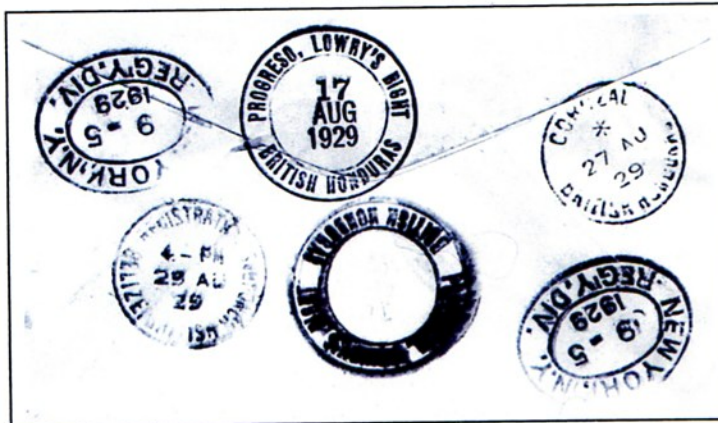


Type TDC-14

ERD = 31/5/29 LRD = 17/8/29



31 August 1929. Registered philatelic cover from Progreso, Lowry's Bight to USA. Stamps are cancelled with type TDC-14 datestamp (*latest recorded date*) and type TSL-2 has been struck alongside as a registration marking. Backstamped in transit through Corozal (27 August) and Belize (29 August). 9c franking = 5c registration + 4c US letter rate. Contains original letter.



Reverse (reduced)

PROGRESO, LOWRY'S BIGHT

The town of Progreso is situated at the end of Lowry's Bight, south-east of Corozal. The post office was opened on 28 October 1908 and closed in or shortly after 1937. Mails were carried to Corozal whenever the opportunity arose and entered into the Belize New River Service.

PROGRESO B. H.

Type TSL-2

ERD = 1/10/12 LRD = 17/8/29

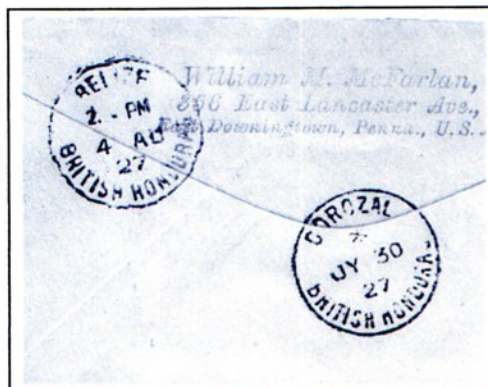


Type TDC-31

ERD = 1/10/12 LRD = 21/7/27



21 July 1927. Cover from Progreso, Lowry's Bight to USA. Stamps are cancelled with type TDC-31 datestamp (**latest recorded date**) and type TSL-2 has been struck alongside. The first digit of the year is omitted and has been inserted in manuscript. Backstamped in transit through Corozal (30 July) and Belize (4 August). Four cents letter rate.



Reverse (reduced)

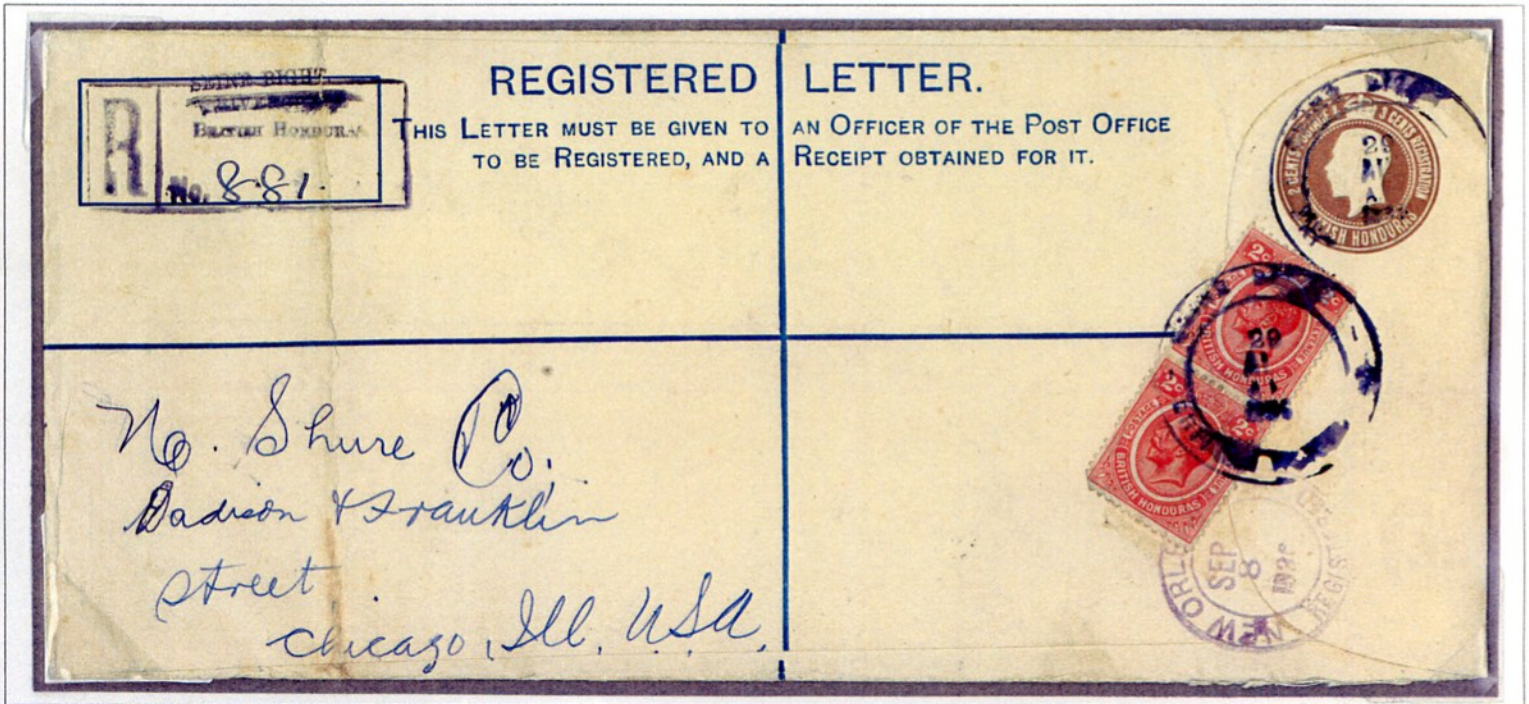
RIVERSDALE → SEINE BIGHT

The post office was moved from Riversdale to Seine Bight on 11 June 1928.

Type TDC-11
 ERD = 9 November 1928
 LRD = 29 August 1930



Type H2 Riversdale registration handstamp
 (overprinted "SEINE BIGHT")



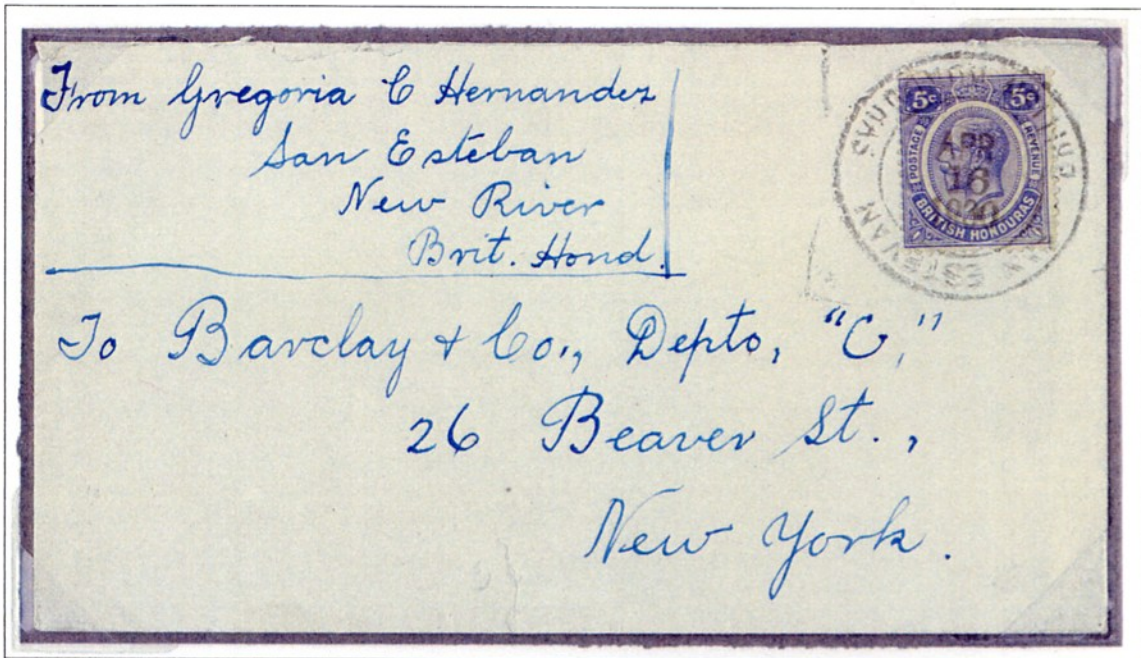
29 August 1930. Registered envelope (H&G type 1a) commercially used from Seine Bight to USA. The envelope had a total face value of five cents, equivalent to the registration fee so an additional 4c in adhesives was added to meet the 9c due (5c registration + 4c postage). Postmarked with type TDC-11 cancellation. Dated stamped in transit through Belize (30 August), New Orleans (8 Sept) and Chicago (9 Sept). A type H2 Riversdale registration handstamp has been used with the office name deleted by hand and overprinted "SEINE BIGHT".

Type TSC-4

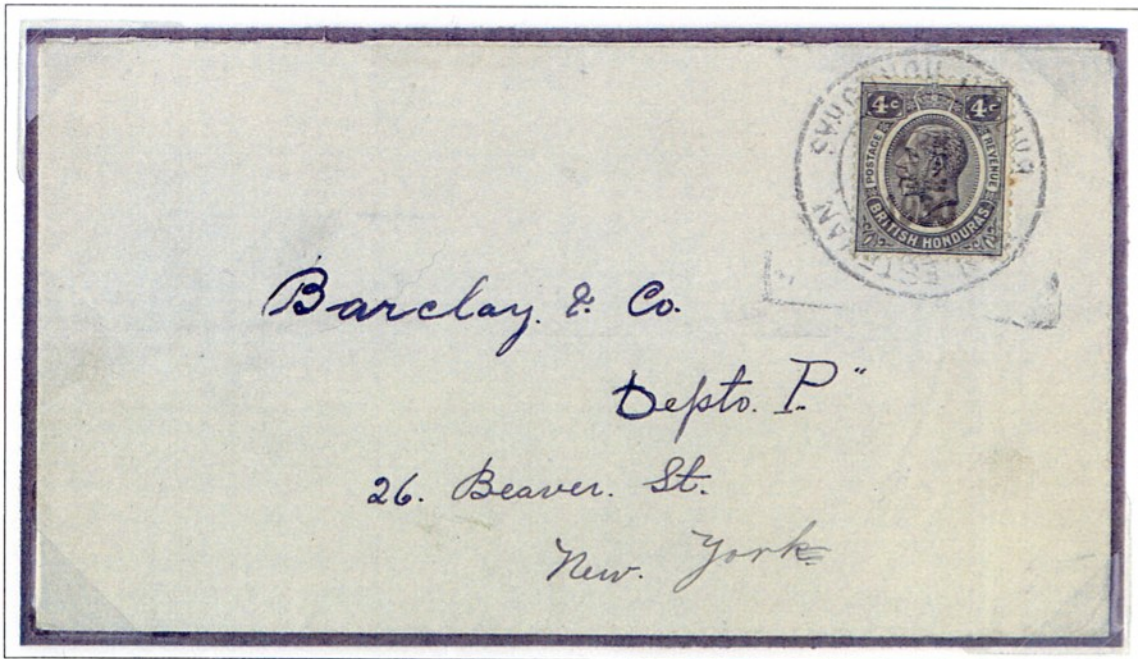


Type TSC-4
 ERD = 28 August 1933
 LRD = 24 November 1939

SAN ESTEVAN



16 April 1930. Cover to USA from **SAN ESTEVAN, NEW RIVER**. The five cents adhesive is cancelled with a type TDC-17 datestamp (date inverted). The rate to USA had been pegged at four cents (the GB & Empire rate) from 1921 and this concession was in place until 1 November 1931. The UPU rate throughout this period was five cents. This cover has been over-franked at the UPU rate. **Six covers are recorded** used with this postmark. Backstamped in Belize (17 April).



24 April 1930. Cover to USA from **SAN ESTEVAN, NEW RIVER**. This cover is similar to the cover above, but is franked at the correct four cents rate. Backstamped in Belize (25 April).

Type TDC-17
ERD = 21 January 1929
LRD = 14 August 1935



SAN PEDRO, AMBERGRIS CAYE

The PO opened in 1900 and postal duties were conducted by the senior police constable until at least 1912. No regular postal service existed until after the Second World War.

Type TDC-2. Two strikes are recorded, one on a pair and one on a single stamp.



Type TDC-2
 ERD = 7/7/10
 LRD = 20/8/10

Type TDC-17. Four strikes are recorded, three undated (two black, one violet) and one dated. Although several philatelists sent self-addressed covers from villages in the 1920s, none is known from San Pedro.



Undated strike on piece



Dated strike

Type TDC-17
 ERD = 8/7/27
 LRD = ---

Type TSC-2. Unlike any other KGV village office, almost all recorded copies of this mark are on cover.



26 September 1931. Commercial cover to USA postmarked with the type TSC-2 "SAN PEDRO / AMBERGRIS" datestamp.

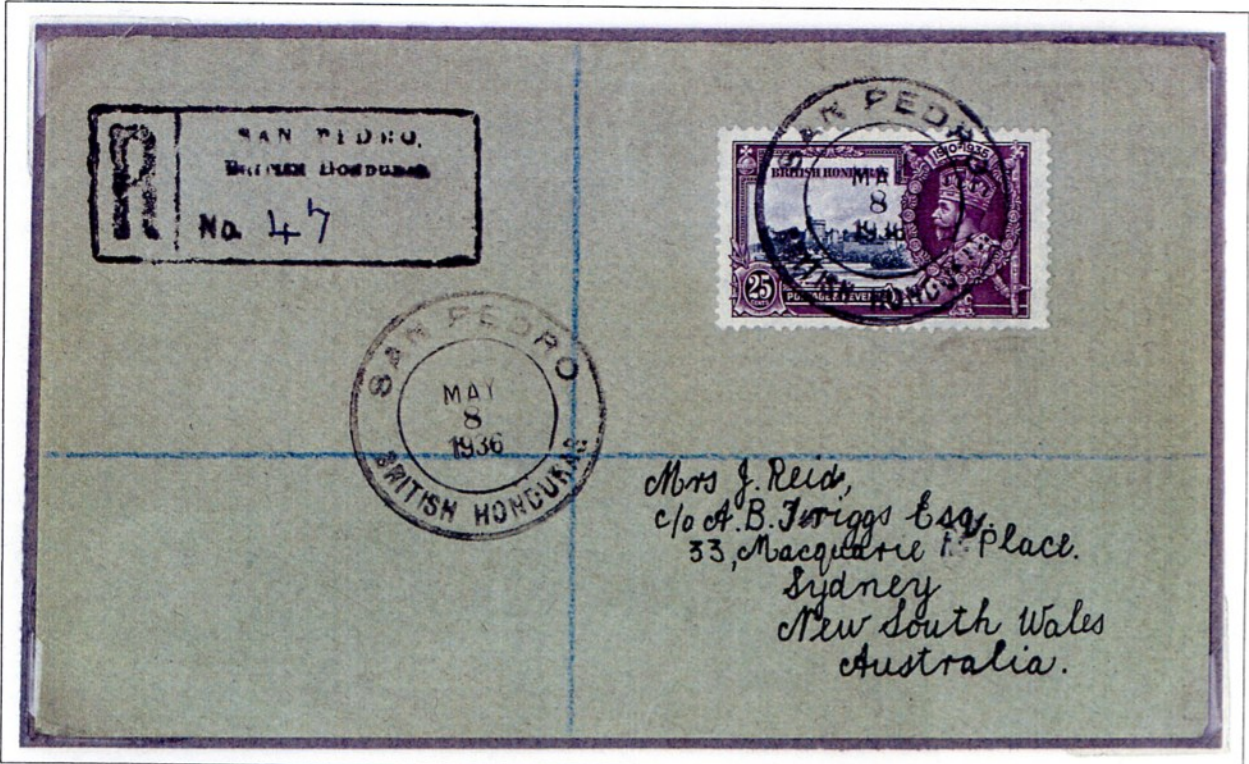
SAN PEDRO, AMBERGRIS CAYE

Type TDC-18 datestamp. This mark is very similar to type TDC-17; TDC-17 is 30-31mm in diameter and TDC-18 is 32-33mm in diameter. Almost all surviving covers are addressed to G.P.Cuttress and did not pass through the post. Covers to other addresses are rare.

Type TDC-18 **ERD: 7/5/36** **LRD: 23/4/40**



7 May 1936. Philatelic Cuttress cover from San Pedro, Ambergris Caye. It is unlikely that this cover passed through the post. It was simply cancelled by favour. **Earliest recorded date.**



8 May 1936. Registered cover from San Pedro to Australia. Handstruck San Pedro registration label. Cancelled with type TDC-18. Backstamped in Belize (9 May), New Orleans (21 May), San Pedro California (25 May) and Sydney (15 June).

SPANISH LOOKOUT → MOUNT HOPE → SPANISH LOOKOUT

This historic village was established as a lookout point to warn of Spanish attacks from Guatemala in the eighteenth century. It is now the centre of the country's Mennonite settlement. The Belize River (Western) Mail Service called here between Banana Bank and Cayo. The post office was open between 20 October 1906 and 15 May 1922, when it moved to Mount Hope, which had already opened on 15 April 1921. It returned to Spanish Lookout on 1 November 1925 for a short while.



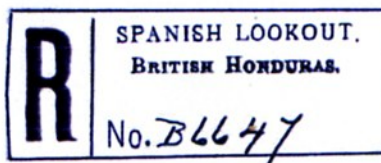
Type TDC-1 ERD = 27 April 1912 LRD = 14 September 1912

Type TDC-10 ERD = 14 February 1919 LRD = 8 December 1921

Type TDC-10
ERD = 15 April 1921
LRD = 6 August 1923



15 August 1927. Registered commercial cover from Spanish Lookout USA. Five two cent adhesives are applied to meet the 9c rate (5c registration plus 4c postage). The cover bears the **only recorded** copy of the type H1 registration handstamp of Spanish Lookout. (This is the **only recorded cover from this office**) The stamps were cancelled on transit through Belize on 16 August. Backstamped in New Orleans (22 Aug) and Chicago (23 Aug).



Type H1
registration
handstamp

STANN CREEK RAILWAY

The Stann Creek Railway ran between Middlesex Town and the jetty at Commerce Bight and was built to carry bananas to the coast.. The tracks were moved north after the war and the line was used as a logging railway between Gallon Jug and Hill Bank.



Early strikes were in purple and the later strikes in black. The date slugs were commonly inserted upside down as in the cover below. All recorded dates of use fall on Saturdays.

Type TDC-3
 ERD = 26/11/14
 LRD = 22/12/18



26/11/14 Purple
ERD



4/3/15 Purple



13/5/15 Purple



11/11/15 Black
Date inverted



25/11/15 Black
Date inverted



23/12/15 Black
Date inverted



16/3/16 Black
Date inverted



22/6/16 Black



12/12/18 Black
LRD



31 December 1914. Commercial cover from Stann Creek Railway to USA cancelled with type TDC-3 datestamp. **This is the only recorded cover with this postmark.**

MISCELLANEOUS POSTMARKS (KEVII & KGV)



Red



Black

BENQUE VIEJO

ORANGE WALK



Note: Benque Viejo has code E, Consejo has code C

