

Br Honduras

1865 No watermark perf 14

1d pale blue



Approved and numbered die proof for the 1d. These stamps predated De La Rue's introduction of the keyplate method, so each value had to be engraved separately.

SPECIMEN

ex Hart

File specimen



Samuel type D1a

ex Tucker



SPECIMEN

File specimen



Samuel type D2

The stamps were printed in four panes se-tenant, the top 2 panes containing 1d values, the lower left pane the 1/- and the lower right pane the 6d, with gutter margins in the centre of each pane.

Mar 10 1869



Partial front prepaid 4d to Mississippi, 10 cents landing charge applied in New Orleans.

*Ex Hart
ex Brassler*

Br Honduras
1865 No watermark perf 14

1d deeper blue

SPECIMEN

File specimen



Samuel type D5

ex Melat



Br Honduras

1865 No watermark perf 14

6d rose

SPECIMEN

File specimen



Samuel type D1a

ex Tucker

SPECIMEN

File specimen



Samuel type D2



Die proof struck in the before hardening state.

The only dated die proof recorded ex Montesor

SPECIMEN

File specimen



Samuel type D5



Confirming the central gutter.

D

6 Dec 1869



Prepaid 6d to the US, so escaping the 10c steam ship charge on the 1d strip to the same address.

Note the red hand-stamp PAID applied in Belize – a rare mark.

ex Bass

ex Hart

Br Honduras

1865 No watermark perf 14

1/- green



Die proof in sunk frame.

ex De La Rue

SPECIMEN

File specimen



Samuel type D1a

D1a is a rare type that was only used for 3 colonies.

ex Tucker

SPECIMEN

File specimen



Samuel type D2

Ex Creed



Ex Snowden and Burrus

SPECIMEN

File specimen



Samuel type D5



Br Honduras

1872 Watermark Crown CC perf 12 ½

1d Deep blue

Imperf plate proofs



ex Ferrari

The issued stamps

1872 Pale blue



1874 Deep blue



Watermark inverted and reversed.

Br Honduras

1872 Watermark Crown CC perf 12 ½

6d Rose

Imperf plate proofs



ex Hind

The Hart collection auctioned by Maresch in 1978 contained imperf blocks of the 3d, 6d and 1/-. The two higher values were subsequently split into pairs, so the 3d is the only surviving block.

The issued stamps

1872 6d Rose



1874 Bright rose-carmine



1/- Deep green

Imperf plate proofs



ex Hind

Br Honduras

1872 Watermark Crown CC perf 12 1/2

1/- Green

Imperf plate proof



The issued stamps



1872 1/- Green 1874 1/- Deep green



*Only used block recorded
ex Hart*



Red Paid to Destination



*Watermark inverted.
ex Barnstone*



Watermark inverted

Br Honduras

1877-9 Watermark Crown CC perf 14

1d Pale blue



1d Pale blue



*Found in letter
box without contents*

1d blue



1d Blue



ex Hart

1877 3d Chestnut

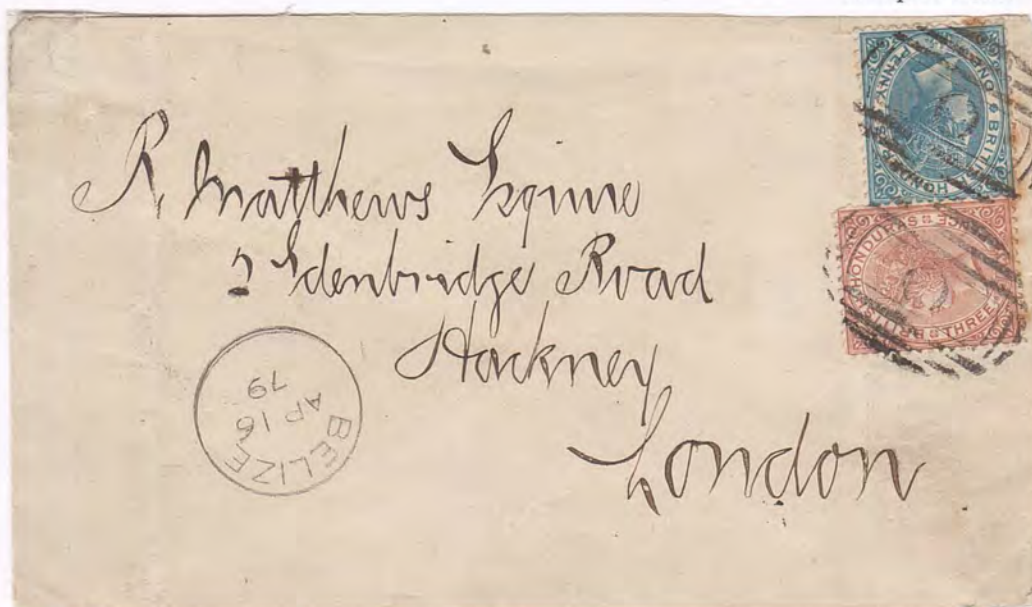


One of 4 blocks recorded

ex Hart

16 April 1879

*Pr Belize 16 Apr
Kingston 19 Apr
Don 25 Apr
Plymouth 13 May*



Backstamp

When Br Honduras joined the UPU on 1 January 1879 the charge for mail to UPU members fell to 4d. The supply of 4d stamps did not arrive for six months so other combinations were required.

The only recorded rate from this period made up with 1d and 3d stamps *ex Hart*

Br Honduras

1877-9 Watermark Crown CC perf 14



Die proof on thick glazed card, without any markings.

ex Hart

6d Rose



1/- Green



Br Honduras
 1877-9 Watermark Crown CC perf 14
 1879 4d Mauve



One of two die proofs in the after hardening state.

This stamp was printed in panes of 30.

ex Tucker

Hand-stamped "Cancelled"



Samuel type D6
ex Latto



Watermark shows marginal letters from the CA dandy roll.

17 Aug 1881



H. Edw. Oswald.



Backstamp

Registered to Germany via London. 4d for single UPU rate plus 4d registration at this early date.

Br Honduras

1882-7 Watermark Crown CA perf 14

1884 1d Blue



The only recorded used block

Prices current to Philadelphia at the 1d printed matter rate

1 Jul 1884



Showing New Orleans transit mark of 8 July and Philadelphia arrival 11 July.

Br Honduras

1882-7 Watermark Crown CA perf 14

1884 1d Rose

UPU specimen



*100 copies only
circulated at this date.*



1887 1d Carmine



1887 1d Carmine



1d carmine bisect tied to piece.

Br Honduras

1882-7 Watermark Crown CA perf 14

1885 6d Yellow

Imperf plate proof



ex Ferrari



ex Ferrari

One of two blocks recorded

There is a pair in the Royal Collection.



1887 1/- Grey



UPU specimen



Specimen Samuel D12

400 circulated

No mint multiples of 1/- grey are known.



UPU specimen



Dot in M (23).

Br Honduras

1882-7 Watermark Crown CA perf 14

1882 4d Mauve

Imperf plate proof



File specimen



Samuel type D11.

The issued stamps



Large O papermakers watermark



Watermark inverted



3 Oct 1885



*Backstamps
ex Proud*

*Single UPU rate to Mexico from Orange Walk.
The A06 cancel on the stamp confirms its use at Orange Walk.*

Br Honduras

1882-7 Watermark Crown CA perf 14

23 Nov 1886



To London at the UPU double rate for a 1oz letter. No extra charge for transit via New Orleans.

Backstamp

13 Feb 1888



Front to Vera Cruz. Very early use of this stamp issued in January 1888.

ex Hart

Br Honduras

1888 Local overprints perf 12 1/2

2c on 6d



Rose-carmine.



Rose.



Rose-carmine.

Rose.

ex Hart

3c on 3d



Only 60 printed according to Robson Lowe.

ex Hart

2c/6d perf 14 bisect

17 Jan 1888



2c on 6d bisect used to uprate a postcard to Vienna.

ex Addiss

Br Honduras
1888 Local overprints perf 14

2c on 6d



Watermark inverted

Minor flaws plate this block as #20, 21 26,27.

3c on 3d

ex Tucker



Only used block recorded

ex Hart

6 Jun 1889



Backstamp

Franked 20c to Munich, 12c for postage + 8c reg fee, showing early use of the red "Registered".

ex Hart

Br Honduras

1888 Local overprints perf 14

2c on 1d carmine

Surcharge offset



Surcharge double



ex Baillie

#5,6,11,12 positioned by the spacing of the 2.



Bisect tied on piece

Surcharge inverted



#25 in the pane.

(Positioned by the pane in the Royal Collection).

ex Duveen



Reserve stocks of the 1d carmine were overprinted to supply the new denomination 2c stamps.

Engraved forgery



Both the stamp and the overprint are bogus.

ex Harper

British Honduras

1 Jan 1888 10 cents on 4d mauve

UPU Specimen



Broken N in cents at upper right (#3/2).

The issued stamps



1,260 sheets of 60 units each printed.

16 Aug 1889



Single rate to Hampton Court Palace.

Br Honduras

1888 Local overprints

10c on 4d



Stop between E and N.



#17 showing C with broken top.

The stamps were printed in sheets of 30 (6x5).



#11-18; #17 shows the constant flaw C with break at top.



#4/5 to 5/6, with the lower left stamp showing the constant flaw break in base of 1 from #5/4.

Only used block recorded

Br Honduras

1888 Local overprints perf 14

20c on 6d



#23 with the broken top to C

50c on 1/-



Foot of 5 missing.

Foot of 5 missing.



Top of N missing.

March 1888 Overprinted TWO in red



No bottom half of TWO.

ex Barnstone



Bisect tied on piece.



Br Honduras

1888-91 London overprints

At the end of 1887 the fateful decision was taken to adopt a dollar currency with 2c equivalent to 1d. It took three years to obtain definitives denominated in dollars and cents which resulted in a stream of provisional overprints made in Belize and then in London, using mostly unsold stocks.

1c on 1d green

No 1d was issued in green, but the 1/2d (ie 1c) was allocated this colour in the UPU convention.

400 specimens supplied to the UPU.

UPU specimens



*Broken M in specimen
(#41 in the overprint forme)*

Imperf top margin



Apparent paper fold.



ex Snowden

14 Apr 1893



Backstamps

6c foreign rate to Chicago with the short-lived double ring Belize cds.

The 1c keyplate definitive was not issued until 1895 so the 1c overprint 1c was still current.

ex Addiss



#12 with a
flaw in

The 1d was not issued in this colour.

Br Honduras

1888-91 London overprints

July 1888 2c on 1d Carmine

120,000 invoiced 11 April 1888.

UPU specimens

Broken M in specimen



(#41 in the overprint forme)



400 specimens supplied to the UPU.



Watermark inverted



29 May 1891



Backstamp

Orange Walk to Belize at the 3c local rate, apparent commercial cover not an Aikman creation.

Br Honduras

1888-91 London overprints

3c on 3d

UPU Specimens



Reserve stocks of the 3d red-brown were overprinted to supply the new denomination 3c stamps.

The issued stamps



119,640 stamps invoiced 11 April 1888.



Br Honduras

1888-91 London overprints

6c on 3d blue

UPU specimens



Samuel type D12.

75,600 6c stamps were ordered on 13 January 1891 to meet demand for the new 3d Empire rate. De La Rue had printed stocks of 3d stamps in blue but overprinted them for the decimal currency.



The sheets had De La Rue's unique current number 55 for this stamp



The surcharge was a stereo of six horizontal units; the second stamp shows a nick in the "S".

Br Honduras

1888-91 London overprints

Approved essays for the 2c, 3c and 10c, the 3 cents imperforate



Initialed by a De La Rue official.

ex De La Rue archives

UPU specimen



Broken "N" (#3/2).

10c on 4d

*75,600 10c on 4d surcharges
invoiced 11 April 1888.*

UPU specimens



Bulge on M.

The stamps were printed in sheets of 30 (6x5).



14 Aug 1888



Registered cover to Germany via London, franked 30c (ie 1s 3d).

Double rate (20c) plus 10c registration fee.

Backstamp

Br Honduras

1888-91 London overprints

20c on 6d

UPU specimens



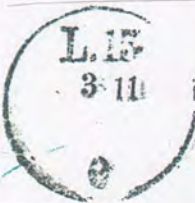
400 specimens supplied to the UPU.

30,000 20c invoiced 19 Feb 1889. 18731 remainders were subsequently destroyed.

The issued stamps



18 Oct 1895



Backstamp

Registered cover to Germany franked with the 1888 20c. 10c single rate plus 10c registration fee.

Oval red Belize registration mark overstruck with the unusual Belize K65 killer.

ex Addiss

Br Honduras

1888-91 London overprints

50c on 1/-

UPU specimens



400 specimens were supplied to the UPU.

The issued stamps



50c stamps were ordered by the Crown Agents on 16 April 1888. 30,630 stamps were printed in sheets of 60, of which 8411 were later remaindered.



One of two blocks recorded

In 1899 about 6000 50c stamps from the unsold stock were overprint revenue.

Br Honduras

1888-91 London overprints

7 Aug 1891



Belize to Germany rated 12c for the double 6c foreign rate.

Backstamps

12 Jun 1893



Belize to Ohio at the single 6c foreign rate.

Backstamps

The 1c keyplate definitive was not issued until 1895 so the 1c overprint 1c was still current.

Br Honduras

1888-91 Local overprints

The foreign letter rate was reduced to 6c per 1/2 oz in 1891. Pending the arrival of the 6c definitives in July 1901 the now redundant 10c on 4d was re-surcharged in black or red.

Two essays using the word *SIX*, one a bar obliterating the old value, were prepared but rejected.

Essay with bar



Three contemporary covers bearing the essay are known.

Essay without bar

ex Jaffé



The "O" is broken at base on #5/4.

CA watermark also in lower margin.

The 4d pane was an unusual 6x5 size, causing watermark misplacement.

Br Honduras

1888-91 Local overprints

1891 (Feb?) surcharged 10c on 4d re-surcharged 6 in red



Break in foot of 10 (#5/4).



"6" distorted.

Both 6s double



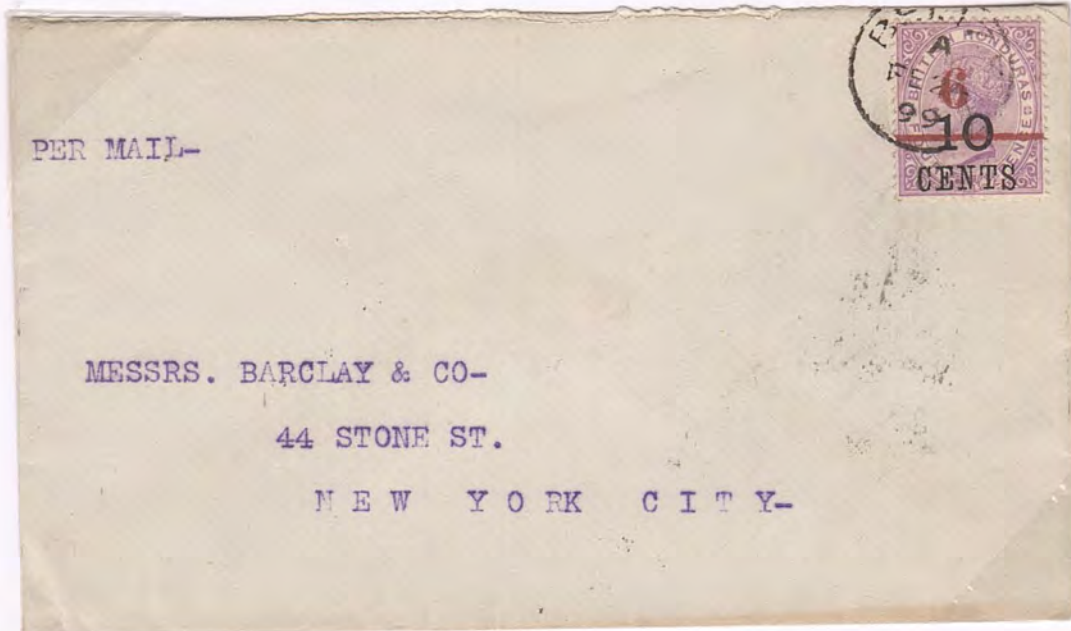
Not listed.

Inverted surcharge



6 and bar inverted on red surcharge.

24 Feb 1899



Single foreign rate to New York.



Label on reverse.



Backstamp

Br Honduras
1888-91 Local overprints

1891 (Feb?) surcharged 10c on 4d re-surcharged 6 in black



Break in bar (#3/3).



Break in bar (#3/3).



Inverted surcharge



Right hand stamp shows 6 and bar inverted.

Br Honduras
1888-91 Local overprints

FIVE on 3c on 3d

Issued on 23 October 1891, about 60,000 stamps were overprinted to supply the 5c postcard rate



#5, 6, 11 and 12, 12 with wide space between I and V.



Overprint double



One sheet sold.

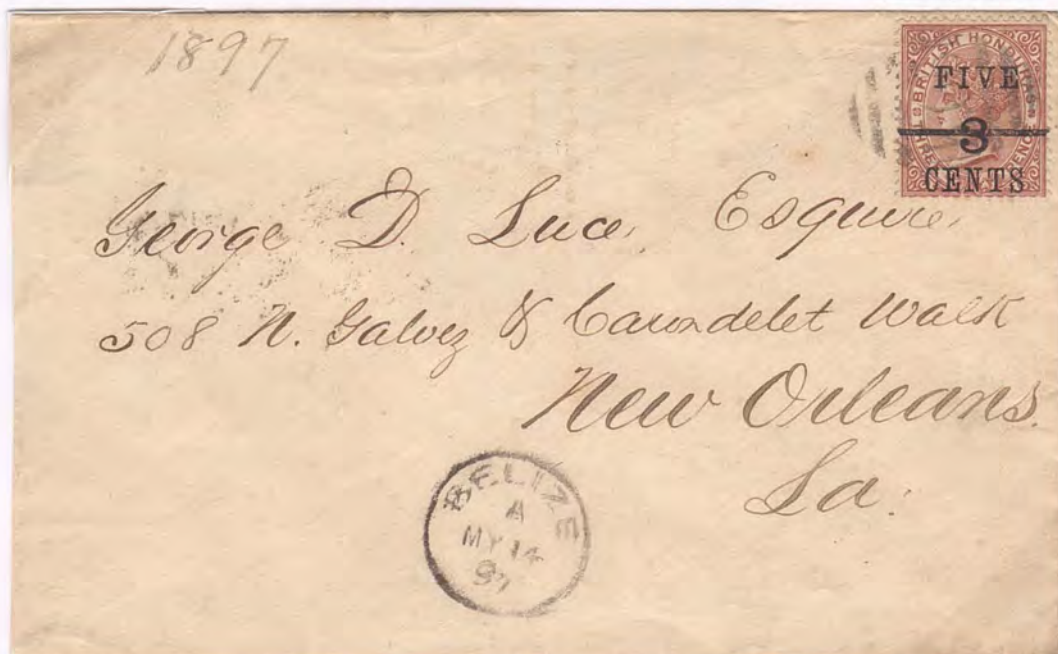


#5, 6, 11 and 12, 12 with wide space between I and V.



Bar broken.

14 May 1897



Backstamp

A late use of this stamp to New Orleans rated 5c, the single foreign rate introduced in 1895.

Br Honduras
1888-91 Local overprints

15 on 6c on 3d

The pane of 60 was surcharged in two settings of 30.



*#25 in each setting has
the bar broken at right.*

Broken bars on the first stamp in the top and bottom rows position this as the last six rows.

Issued on 23 October 1891, 13,556 examples were sold.

Overprint double, one reversed



This catalogued variety looks like a kissprint.

Br Honduras

1891-1901 definitives

In 1891 Br Honduras adopted De La Rue's keyplate process initially using the universal postage keyplate. £12 was charged for the five duty plates, but the postage keyplate was supplied free.

The five 1891 duty die proofs from the striking book



2c was the printed matter rate, 3c the local letter rate and 6c the single overseas letter rate.

*ex De La Rue
ex Harper*

Imperf plate proof



ex Harper



UPU specimens



400 specimens were printed in 1891, three for each UPU member.

Br Honduras

1891-1901 definitives

In 1895 the foreign letter rate was reduced from 6c to 5c, so a 5c definitive became necessary. A 10c was needed for double rated letters and a 1c for the printed matter rate.

Essays for the three 1895 values on De la Rue archival piece



Imperf in the issued colours with name and value tablets handpainted. ex De La Rue

UPU specimens



In 1892 the UPU raised the numbers of specimens circulated to its members to five, making 750.

Varieties on the 1c



Watermark inverted



Duty plate misplaced

ex Barnstone

Although the same colour was used for frame and duties, the 1c was printed in two operations.

Br Honduras

1891-1901 definitives

The five values invoiced 16 June 1891



The five values issued in 1891 were printed from the universal postage Plate 2.



Orange shade



12,000 invoiced 7 Apr 1892.



6,000 invoiced.



*120,000 invoiced 12 Feb 1898
printed from the Postage keyplate.*

11 Sep 1891



The five 1891 values on a registered philatelic cover to Hamburg.

Br Honduras

1891-1901 definitives

Adoption of the universal keyplate

The 1899 Order-in-Council that official fees be paid in the form of stamps required new values marked Postage & Revenue. Four new high values used De La Rue's universal unified keyplate.

Photographic proof



Imperium colour trial



"Sperati reproduction" on reverse.

Imperium colour trial



Imperf Colour Trial



ex De La Rue

Taken from the Appendix Sheet dated 2 August 1899.

ex De La Rue



400 specimens supplied to the UPU.

The four values invoiced 12 Oct 1899 were issued in December.

The issued stamps



The unified keyplate was by 1899 on its third plate.

Br Honduras

1891-1901 definitives

1901 New designs for the 5c and 10c

Imperf Colour Trials



ex De La Rue

*ex Tucker From the Appendix Sheet
dated 23 July 1900.*

Imperf Colour Trial



ex de la Rue

UPU Specimens



Hand-stamped Ultramar



5 examples sent to the Portuguese colonies.

The issued stamps



Br Honduras

1891-1901 definitives

The defective "S" flaws on the left hand pane

A deformity in the "S" affected #7/3 printed from the Postage keyplate. Research by the exhibitor has established the lifetime of the initial flaw from 25/6/97 to 6/1/98. The flaw was repaired but imperfectly so examples with the repair can be detected from 16/2/98 until the plate was replaced in June 1900. The flaws also appear on two of the revenue overprints of 1899 and on the issues of 3 other colonies (Gambia, Seychelles and Straits Settlements) that used the same colonial plate.

The malformed "S"

June 1897 printing



1010 sheets printed.

October 1897 printing



375 sheets overprinted.

November 1897



*Gambia used the same plate.
250 sheets printed.*

July 1897



*Seychelles used the same plate.
40 sheets remained unoverprinted.*

The repaired "S"

February 1898 printing February 1899 printing



c600 sheets printed.



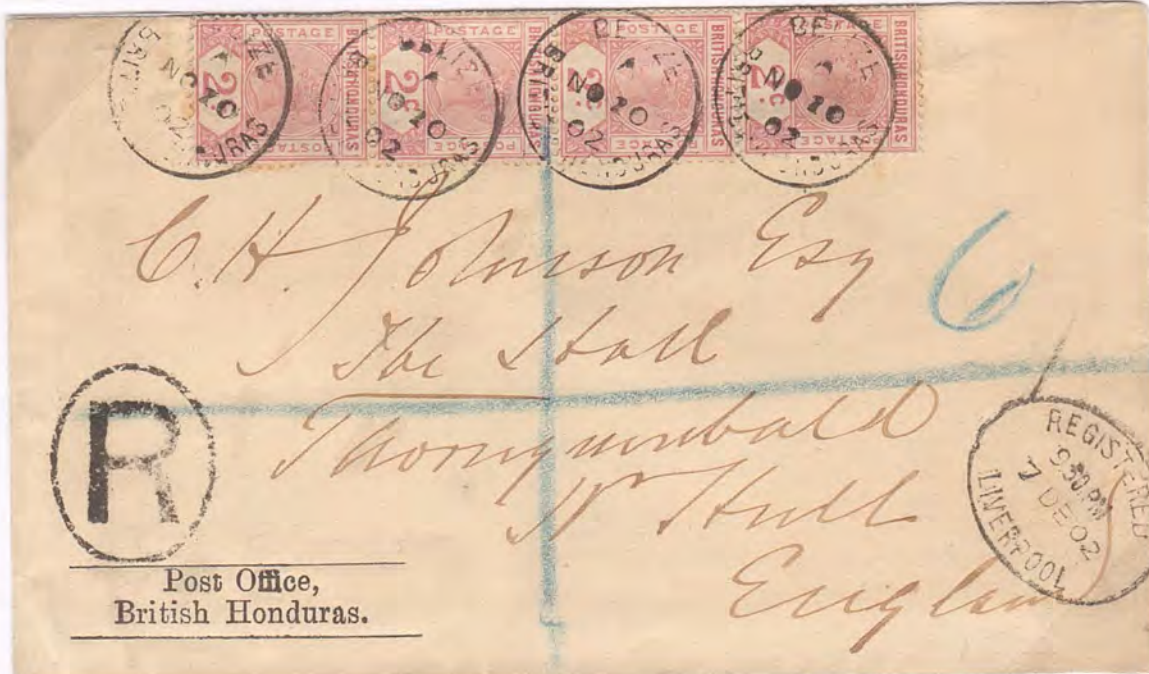
3048 sheets printed.

1898 or 1899



*Straits Settlements used the same plate.
1212 sheets printed.*

10 Nov 1902



Registered at double the 1d Empire rate (4c postage and 4c registration). One repaired "S" flaw. Backstamp

Br Honduras

The 1899 local Revenue overprints

Examples of the 11mm overprints from the lower three rows

"N" clearly doubled



Surcharge double



Double impression of Revenue.



Br Honduras

The 1899 local Revenue overprints

An order in Council of 14 June 1899 required fees to be paid in "adhesive stamps used for postal purposes". An amendment of 19 July ordered existing stocks of stamps to be overprinted revenue.

Examples of 12 mm overprints from the upper seven rows



E in revenue almost omitted.



The setting consisted of sixty stereotypes in two sizes. In the top seven rows and #2 in the 8th row the overprint measures 12mm in length, whereas in the remaining 17 positions it is 11 mm in length.



*Br Honduras
July 1899 10c revenue overprint*

The stamps in the 7 top rows received a 12mm overprint, and rows 9 and 10 an 11mm overprint. Row 8 had a mixture of the two sizes. While there are minor flaws in the overprint forme, the main interest lies in the right hand column where the final "e" is missing from row 5 and weak in next four rows. The right hand selvedge confirms that two panes of 60 were printed se-tenant.

3/10 F for E
 3/10 MAKE
 BRI
 2/13 ↓ show R
 2/13 ↓ show R



*Complete pane
except for
the top row*

2

This pane does not show "Bevenue" on #6/4 which was corrected early in the print run. The 10c printing also predated the damage to the "S" on #7/3.

ex Hart

Br Honduras

The 1899 local Revenue overprints

The Bevenue flaw



The flaw appears on #6/4.



While not rare, the error was evidently repaired as the spelling is correct on some panes.



The 1899 local Revenue overprints

The tall narrow U flaw

The narrow "U" in Revenue appears on #1/5 on both panes.



Right pane.



Right pane.



The fourth stamp on Row 3 has a constant broken top to the "E".
Left pane.

Br Honduras

1899 The postal fiscals

5c revenue pair commercially used on a registered cover to Winch

17 May 1900

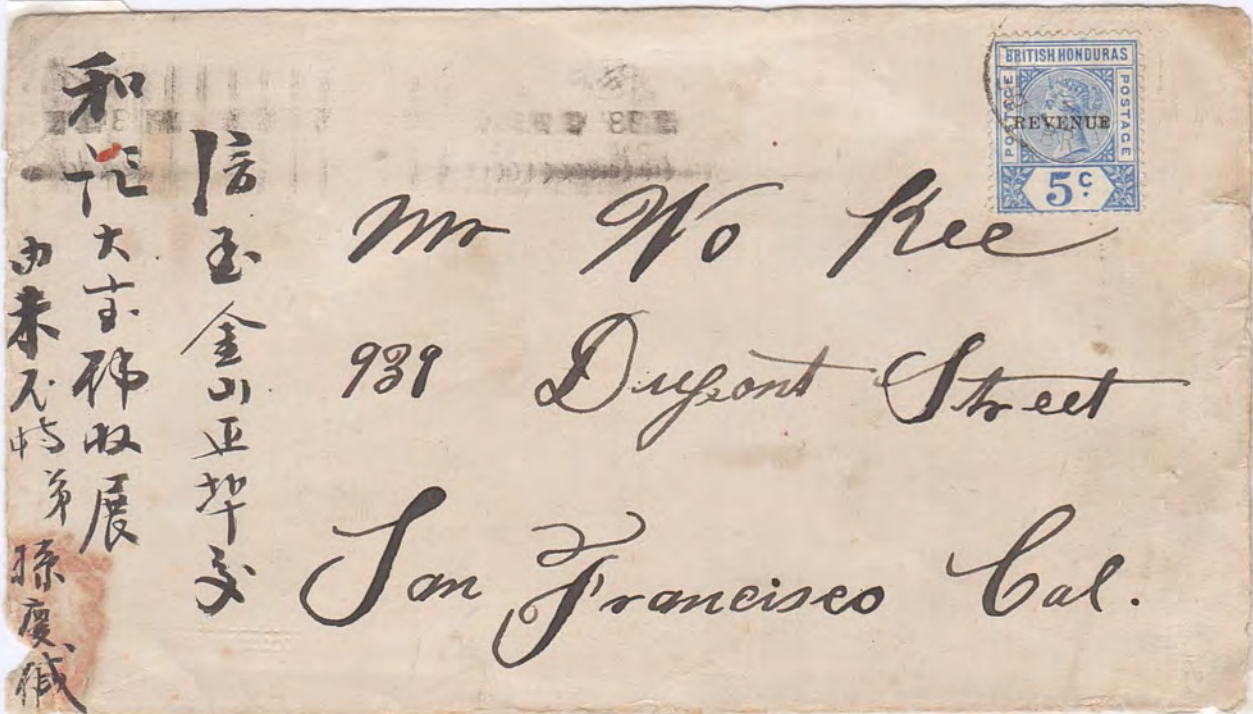


Carried to New Orleans on a US vessel. Winch did not usually overpay for postage so it must have been a heavy packet to rate 5 1/2d shortly after the introduction of the 1d Empire Rate.

Br Honduras

Postal fiscals commercially used

? Apr 1900



Single rate to San Francisco with address in Chinese reading down at left.

Backstamps

31 Oct 1901



Registered to New York, rated 6 (cents) prepaid in red and 4c registration fee.

Backstamps

Br Honduras

1902-4 King Edward VII definitives

Imperf colour trials

The colour approved by W. H. Mercer for the issued 20c



From the Appendix sheet dated 18 December 1903



ex Hart



ex Hart

ex De La Rue



From the same Appendix sheet

ex De La Rue

UPU specimens



750 specimens circulated to UPU members



Hand-stamped Ultramar

Broken M in specimen



1902-4 King Edward VII definitives

King Edward VII became king when his mother Queen Victoria died on 21 January 1901.



The 5c issued 10 October 1902



The 2c issued 18 March 1903



The 1c issued 28 April 1904



The 20c issued 28 April 1904

The Large C variety



Row 1 stamp 4 has the constant large C variety.



Watermark inverted.



Watermark inverted.

Br Honduras

1907 King Edward VII definitives

The 10c issued 20 September 1907



Bulge on M (#17).



Hand-stamped Ultramar



The 50c issued 20 September 1907



Hand-stamped Ultramar



Br Honduras

1907 King Edward VII definitives

The 25c issued 20 September 1907

Imperf colour trial



From the Appendix sheet dated 15 October 1906.

*ex De La Rue
ex Harper*

Imperf Colour Trial



In the issued colour.



UPU Specimen



Hand-stamped Ultramar by the Portuguese P.O.



5 examples sent to the Portuguese colonies.

Spaven flaw



The flaw appears on #1/3, left pane.

Br Honduras

1907 King Edward VII definitives

The three high values issued 20 September 1907

UPU Specimens



Broken M (#41 in the overprint forme)



The issued stamps



Hand-stamped Ultramar



Broken M in specimen



ex Melat



Br Honduras

1908-11 King Edward VII definitives

File specimen



Samuel type D9.

*ex De La Rue
ex Latto*

Imperium colour trial



In colour of the issued 5c.

Imperium colour trial



In colour of the issued 2c.

UPU Specimens



In 1907 the numbers reverted to three per UPU member.

The issued stamps

Angola security mark



*Circular cancel applied
by the Angola receiving PO.*



Spaven flaw



The flaw appears on #1/3, left pan

1913-21 George GV definitives

UPU Specimens



Complete set with broken M in Specimen

#41 in the sheet.



Dot in M (#23).

Br Honduras

1913-21 George GV definitives

Presentation "specimen" set



Hand-stamped in the colony with Samuel type BH1.



The \$5 is from the deep red printing from plate 3 issued in 1921, which provides a rough date.

UPU Specimens



Circular cancel applied by the Angola receiving PO.

Br Honduras

1913-21 George GV definitives

The keyplate was used by five colonies, namely Grenada, Malta, St Lucia and British Solomon Is. It inevitably experienced heavy use and 3 plates were needed.

Plate 1



used at All Pines.

All ten 1913 values were initially printed from plate 1.

Plate 2



Eight values (excluding the 5c and \$5) had later printings from Plate 2.

Plate 3



The master Die Proof struck for Plate 3



Ex Hadley

The \$5 was the only Br Honduras stamp printed from plate 3, identifiable by its deep red shade.

Br Honduras

War Tax varieties

The 1917-8 local War Tax

The local overprints were sent to the UPU without any specimen cancellation, usually applied by de La Rue. They can only be identified if the receiving authority applied its own obliteration.

UPU Specimens



Moire underprint.



The issued stamps



Watermark inverted.



SE stamp with A in War broken.

Surcharge inverted



Two sheets exist with War inverted, this one with War offcentre.

Surcharge double



The 1918 De La Rue overprints

Thin A variety

Thin A variety



One stamp in the upper row has a thin left leg to A.



Watermark inverted and reversed.

Br Honduras

1921 2c Peace issue

Engraved Master Die Proof



*Engraved progress proof dated December 1920 "Peace" engraved on either side of the crown.
The engraver L. V. Phillips' presentation copy.*

Initialed die proof



On thin paper.

ex De La Rue

Imperf plate proofs



From the file block of 6.

ex Cromwell

UPU specimen



400 circulated.

Specimen reads upwards.

The stamps were issued on 28 April 1921.

Missing A in MCA watermark



One "A" is omitted on the upper right stamp.

The watermark points left.

Br Honduras
1922 4c Commemorative

A new value was required when the Empire and US postage rate was raised to 4c. in 1922.

Approved Photographic Essay



Signed by a senior official in the Crown Agents.

The design used for the Peace stamp was retained for the 4c value, omitting the words "Peace".

ex Tucker

Engraved die proof



On thin paper.

ex De La Rue

UPU Specimen



UPU Specimen



Additional specimen handstamp applied by receiving authority.

The stamps were issued on 4 January 1922.



Br Honduras

1922-33 George GV definitives

Printers Samples



*ex Tucker
ex Barnstone*



On thick brown card.

ex De La Rue

File specimens



Samuel type D9.

Ex Latto



Samuel type D9 and dated.

*ex De La Rue
ex Latto*

Presentation specimens

Hand-stamped Samuel BH1 for a local Official



These were the only 3 values issued on 1 August 1922. The 10c was issued on 1 December 1922.

Br Honduras

1922-33 George GV definitives

UPU Specimen multiples



De La Rue changed the specimen format in 1922 from Samuel type D12 to type D16. Security concerns about fraudulent removal of the overprint occasioned a change to perforations in 1929.



Rejoined pair to form a block of four.



Rejoined pair to form a block of four.

ex Koh-i-Noor

Br Honduras

1922-33 George GV definitives

UPU Specimen multiples



ex Koh-i-Noor

Broken M in Specimen (#41)



Only present on the D12 overprint.



Rejoined pair to form a block of four.



ex Koh-i-Noor

Br Honduras

1922-33 George GV definitives



Working proof
On thick card



Struck to test the registration.

ex Tucker



Imperf colour trial



ex De La Rue Archives

Imperf colour trial



ex De La Rue

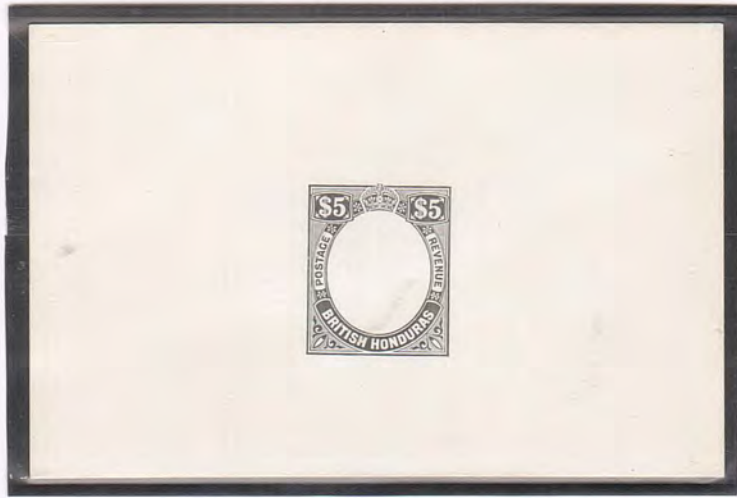


Br Honduras

1922-33 George GV definitives

The \$5 issued on 1 October 1924

Duty die proof



The duty plates were used in conjunction with the colonial head in a ring of pearls.

The issued stamps

A rejoined pair of UPU specimens



Samuel type D16.



Br Honduras

The 1920 \$2 booklet

The booklets were made up in the standard size with horizontal blocks of 6 stamps. However, in this case there were to be 10 panes of 10 stamps folded over to fit the cover so many came loose.

The front cover



A fragile booklet containing 100 2c stamps



Contents: ten panes of five 2c stamps.



As the stamps were printed in two panes of 6x10 separated by a central selvedge, it was natural to remove the 50 outside stamps of each pane, leaving a central interpanneau pair to be sold.



A similar booklet consisting of 100 3c stamps was issued but none have been recorded.

Br Honduras

The 1923 \$2 booklet



*Typical clipped perfs from left margin.
Made from ten blocks of 10 of the 2c brown.*

The \$2 booklet issued in 1927

The issued stamps



Contents: ten panes of 2c red stamps.

5 Dec 1931



First flight cover (86 flown) franked with a complete booklet pane of 10.

Br Honduras

The 1927 \$2 Booklet

The De La Rue records contained two booklets of 100 2c values in which each stamp had been hand-stamped Specimen for file purposes. These have since been split into panes or smaller units.



One booklet was hand-stamped Samuel type D16a specimen

ex De La Rue



Samuel type D16a.



Samuel type D18.



One booklet was hand-stamped Samuel type D18 specimen.

Printed in October 1926.

ex the De La Rue archives

The issued stamps

Interpanneau block



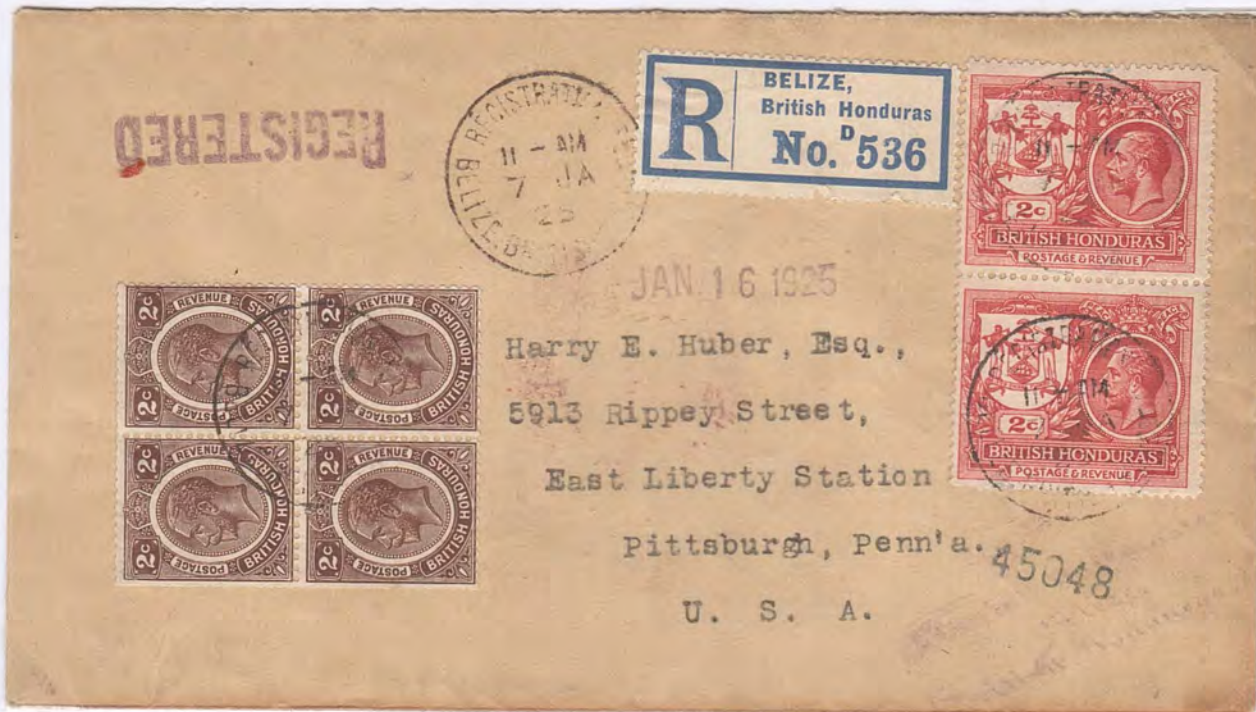
The booklets were created from the ten outer rows of a sheet, leaving central interpanneau pairs.

Br Honduras

2 cents booklets on cover

1923 2c brown booklet (10 panes of ten)

7 Jan 1925



Backstamps

Double rated registered envelope to Pittsburg. The block of 2c is from a booklet pane of 10 units.

1926 2c rose (10 panes of ten)

5 Dec 1931



Backstamp

Booklet pane used on first flight cover to Merida (86 flown).

Br Honduras

UPU specimens

1935 Silver Jubilee



Bradbury Wilkinson perforations Samuel type B9.



1937 Coronation Issue



Perforated Samuel type D20 (circulated in strips of 3).



Br Honduras

1923 Postage Dues

UPU specimen overprints in red



Samuel type D16.

The issued stamps



Varieties on the 4c



Watermark inverted.

Flat top to C.

25 Mar 1952



Philatelically inspired usage from Bermuda to "Caye Corker"