

CAYMAN ISLANDS.

THE KEY-PLATE PERIOD, QUEEN VICTORIA & KING EDWARD VII.

In 1900, The Secretary of State gave his approval for the Cayman Islands to issue their own postage stamps. This followed prolonged correspondence between the Cayman Island's Commissioner, the Governor of Jamaica and the Colonial Secretary.

The first issue, comprising of two values, the ½d and 1d, were the last to be printed from the old Colonial 'Postage-Postage' key-plate. These were printed from two requisitions: 36/00 of 7 August 1900 and 36/01 of 30 May 1901. The first requisition was delivered on the S.S. Elbe, being received at Georgetown on 20 November 1900.



'Postage-Postage' design.



'Postage-Revenue' design.

Almost as soon as the first stamps were received, demand for higher values and the death of Queen Victoria, prompted the need for a new issue.

The display shows the two Queen Victoria values; mint, overprinted 'specimen' and used.

The new Colonial 'Postage-Postage' key-plate was used for printing the first King Edward VII issue. The 2½d, 6d and 1/- were ordered on requisition 51/01 of 23 December 1901. These were the first stamps to be printed from the new key-plate. The ½d and 1d being on requisition 32/02 of 19 April 1902.

The second King Edward VII series, printed using the new multiple crown CA watermark, were ordered on requisition 74/04 of 20 September 1904; with the exception of the 1d, which was on requisition 60/05 of 22 August 1905.

The Cayman Island's Vestry passed the 'Stamp Duty Law' on 28 November 1906, designed to raise extra revenue. The third series of King Edward VII stamps were requisitioned on 96/07 of 4 January 1907, and included new denominations. An oversight was made and the stamps were printed from the 'Postage-Postage' key-plate.

Due to a shortage of low value stamps in 1907, three provisionals were issued. One value was surcharged at Kingston, Jamaica, and the other two were surcharged at Georgetown.

A requisition was rushed through, 74/07 of 20 November 1907. This was for ½d and 1d denominations, to ensure that no more provisional issues would be necessary. These were printed from the King Edward VII 'Postage-Revenue' key-plate. The other denominations were added in 1908.

A further surcharge was issued in 1908, to pay the 2½d non-Empire rate.

The display shows examples of all the King Edward VII issues; mint, overprinted 'specimen' and used, with emphasis on the 'Glover Flaw' and provisional issues. Also of interest, is the inclusion of 1d and 6d denominations that were printed from Plate 2.

The display uses original research, published by the exhibitor, concerning the quantity of stamps printed and requisition dates; the quantity of 'Glover Flaws' possible; and, the previously unrecorded printings from Plate 2.

CAYMAN ISLANDS – THE ‘KEY-PLATE’ PERIOD.

QUEEN VICTORIA.

The Cayman Islands sought, and received, approval from the ‘Jamaican Assembly’ and ‘The Justices and Vestry’, of the Cayman Islands, to issue their own postage stamps.
The duty plate was approved on 23 May 1900. The Secretary of State gave his approval and the general colonial key plate was used.

A requisition was submitted by the Crown Agents to Thomas De La Rue & Company, on requisition number 36/00 of 7 August 1900. A further requisition, 36/01, was made on 30 May 1901.

The Queen Victoria issue, for the Cayman Islands, was the last printing by De La Rue from the old ‘Postage-Postage’ key plate.



The two values are Wmk Crown CA, comb perforated 14, using typography and printed from Plate 3.



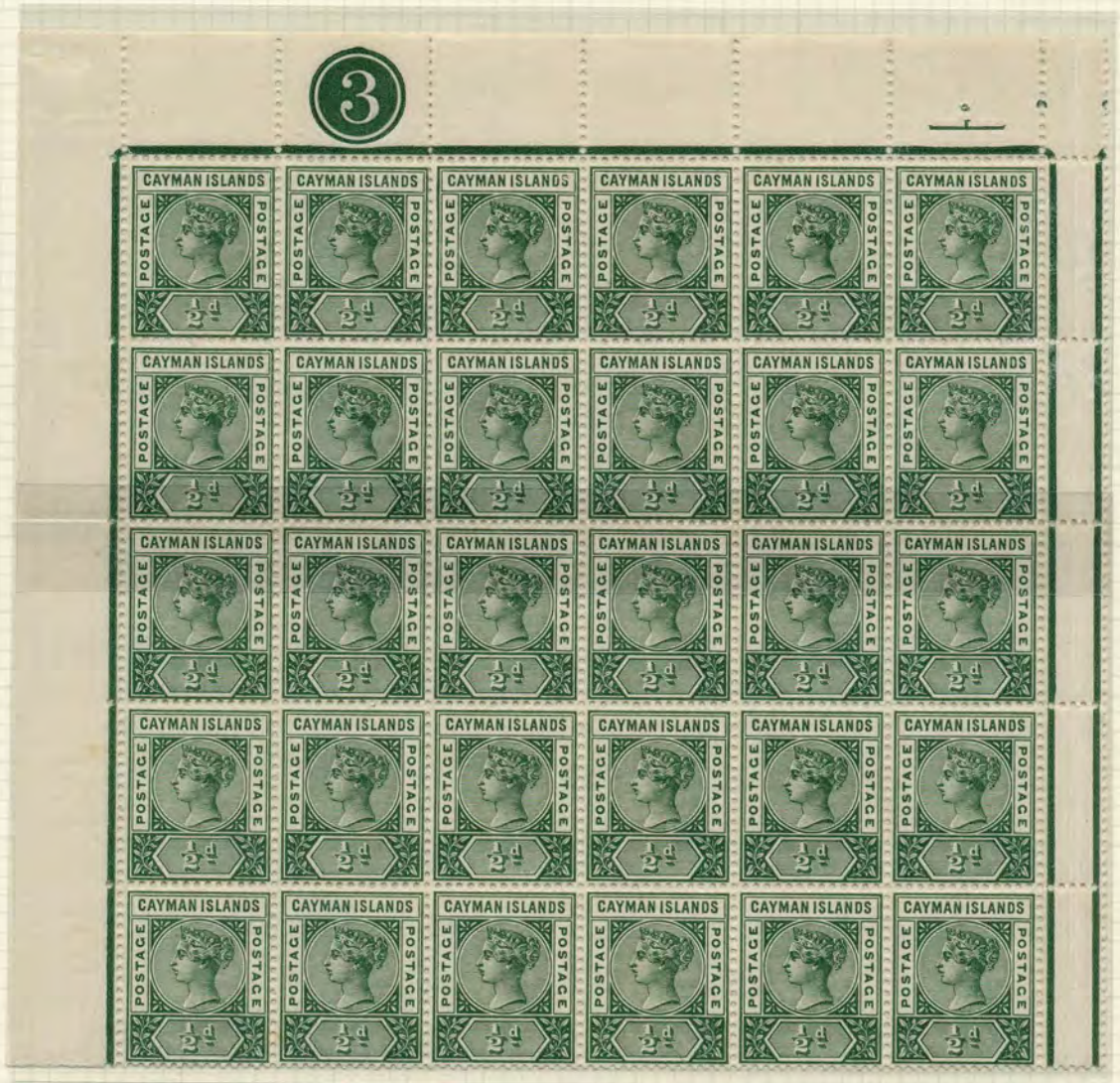
1/2d Pale green

The stamps were dispatched on the S.S. Elbe, being received in Georgetown on 20 November 1900.

Quantities Printed:- 1/2d 96960 & 750 overprinted ‘SPECIMEN’
1d 97920 & 750 overprinted ‘SPECIMEN’

CAYMAN ISLANDS – THE ‘KEY-PLATE’ PERIOD.

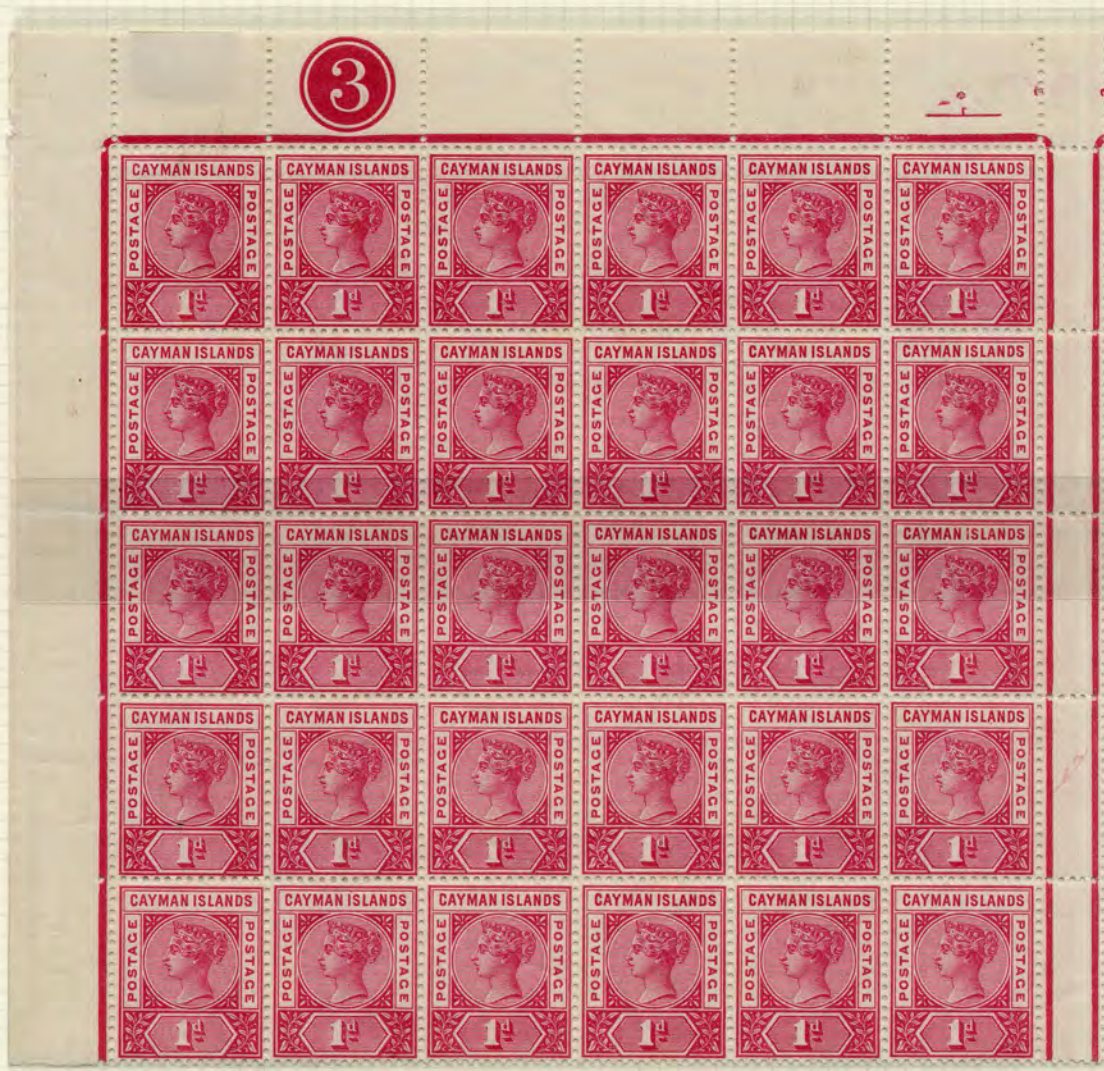
QUEEN VICTORIA.



1/2d Deep Green.

CAYMAN ISLANDS – THE ‘KEY-PLATE’ PERIOD.

QUEEN VICTORIA.



1d Pale carmine.

CAYMAN ISLANDS – THE ‘KEY-PLATE’ PERIOD.

QUEEN VICTORIA.



1d Rose carmine.

CAYMAN ISLANDS – THE ‘KEY-PLATE’ PERIOD.

QUEEN VICTORIA.



Pale green.



Deep green,
(Used in either November or December 1900)



Rose carmine.
(Used in Cayman Brac)



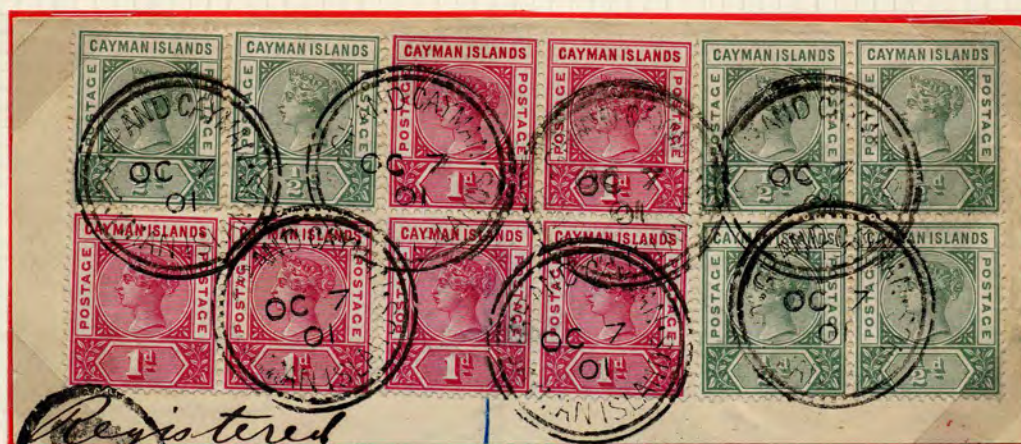
Pale carmine.

CAYMAN ISLANDS – THE ‘KEY-PLATE’ PERIOD.

QUEEN VICTORIA.



Registered cover, showing the earliest use of the Type 1 registration etiquette.



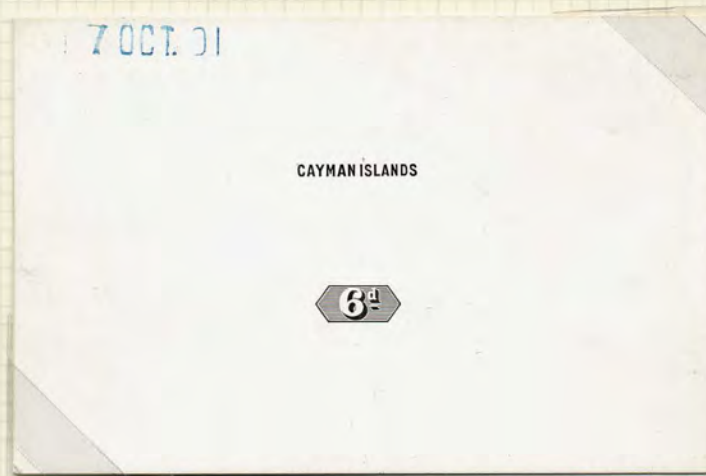
Piece, showing part of the registration etiquette.
From the same correspondence as the cover above.

CAYMAN ISLANDS – THE ‘KEY-PLATE’ PERIOD.

KING EDWARD VII.

Almost as soon as the Queen Victoria issue arrived, demand for higher values and the death of the Queen, prompted the need for a new issue.

The 2½d, 6d and 1/- values of the first King Edward VII series were ordered from De La Rue, on requisition number 51/01 of 23 December 1901, with the ½d being ordered on requisition number 62/02 of 18 July 1902 and the 1d on requisition number 133/02 of 16 January 1903. The 2½d, 6d and 1/-, were the first stamps to be printed from the new Colonial ‘Postage-Postage’ key plate.



Die Proof for the 6d, dated 7 OCT. 01

Ex Marston.



6d from requisition 51/01, 23 December 1901.

CAYMAN ISLANDS – THE ‘KEY-PLATE’ PERIOD.

KING EDWARD VII.



The five values are Wmk Crown CA, perf 14, using typography and are printed from Plate 1.



1/2d Green.



1/- Orange.



1d Carmine.



2 1/2d Bright blue.



6d brown.

Quantities Printed:-	1/2d	37080 & 722 overprinted 'SPECIMEN'
	1d	30720 & 722 overprinted 'SPECIMEN'
	2 1/2d	17880 & 722 overprinted 'SPECIMEN'
	6d	7920 & 722 overprinted 'SPECIMEN'
	1/-	5880 & 722 overprinted 'SPECIMEN'

CAYMAN ISLANDS – THE ‘KEY-PLATE’ PERIOD.

KING EDWARD VII.

The ‘Glover Flaw’.

The ‘Glover Flaw’ is a downward bulge on the name tablet frame, below the first ‘A’ of ‘CAYMAN’.
It occurs on all the values printed from the King Edward VII ‘POSTAGE-POSTAGE’ key plate for the Cayman Islands. It also occurs on all values printed from this key plate, for the Gambia and Seychelles.
It appears on the last stamp, No. 6, in the first row of the left hand pane.



Enlarged Detail.



2½d bright Blue, showing the position of the ‘Glover Flaw’ (L1/6).

1902-1903 series.



Variety of ‘Glover Flaw’ on the 1d Carmine.



The left hand stamp, above, shows the normal dent, whilst the right hand stamp shows an abbreviated dent.

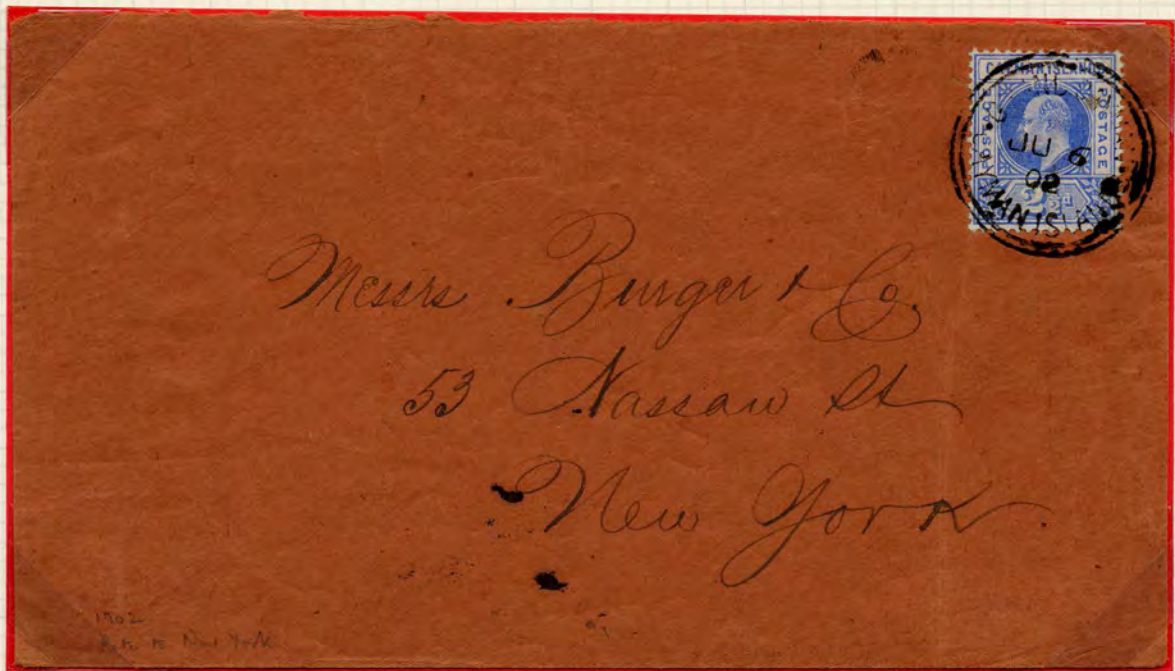
CAYMAN ISLANDS -- THE 'KEY-PLATE' PERIOD.

KING EDWARD VII.

1902 - 1903 Series.



'Glover Flaw's.



2½d bright blue on cover, cancelled Georgetown type 3a dated JU 6 02, to the USA, paying the correct non-empire rate for ½ ounce.

CAYMAN ISLANDS – THE ‘KEY-PLATE’ PERIOD.

KING EDWARD VII.

Second Series.

The ½d, 2½d, 6d and 1/- were ordered, from De La Rue, on requisition number 74/04 of 20 September 1904. The 1d was ordered on requisition number 60/05 dated 22 August 1905.

The five values are Wmk Crown MCA, perf 14, using typography and are printed from Plate 1.



½d Green.

1d Carmine.

2½d Bright blue.

6d Brown.

1/- Orange.



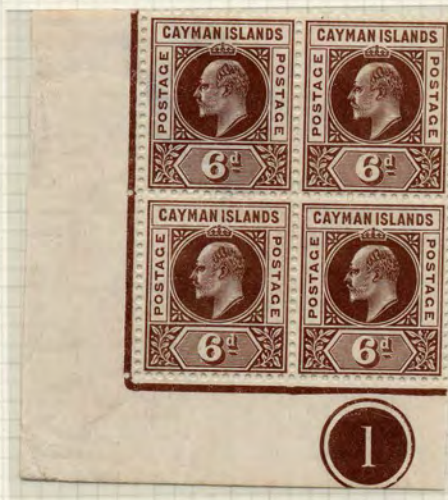
Quantities Printed:-	½d	30960.
	1d	24480 (of which 4800 were used for surcharging in 1907).
	2½d	29280.
	6d	8880.
	1/-	8880.

No stamps of this issue were overprinted as ‘specimens’.

CAYMAN ISLANDS – THE ‘KEY-PLATE’ PERIOD.

KING EDWARD VII.

Second Series.



The ‘Glover Flaw’.

1904 – 1907 series.



258 Possible



164 Possible



244 Possible



74 Possible



74 Possible

CAYMAN ISLANDS – THE ‘KEY-PLATE’ PERIOD.

KING EDWARD VII.

1904 – 1907 Series.



‘Glover Flaw’s.

CAYMAN ISLANDS – THE ‘KEY-PLATE’ PERIOD.

KING EDWARD VII.

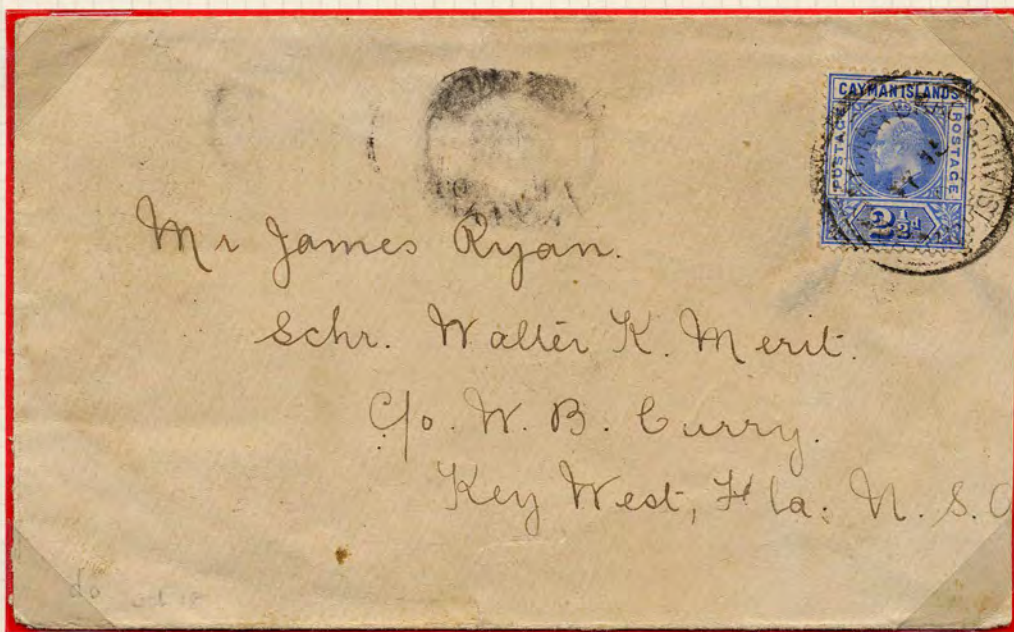
1904 – 1907 Series.

Between 29th September 1906 and 30th October 1906 a different canceller was in use, the type 3b. This cancel is identified as having a thin ‘inner ring’.



The 1d Carmine with year ‘07’ inserted by hand.

SCHOONER MAIL.



2½d bright blue, cancelled Georgetown type 3a dated MY 15 08, to the USA, paying the correct non-empire rate for ½ ounce.

CAYMAN ISLANDS – THE ‘KEY-PLATE’ PERIOD.

KING EDWARD VII.

Third Series.

This issue was requested due to the requirement for higher denominations to cover revenue charges. An oversight was made, as the stamps were printed from the Postage – Postage key plate. All four values were ordered, from De La Rue, on requisition number 97/06 of 4 January 1907.

Imperforate Colour Trials.



1/- Brown and blue: The issued colours of the 4d.

Ex Rew. Marston.



1907 4d Brown and blue.



1/- Violet and green: The issued colour.

Ex Danson. Marston.



1907 1/- Violet and green.

CAYMAN ISLANDS – THE ‘KEY-PLATE’ PERIOD.

KING EDWARD VII.

Third Series.



The four values are Wmk Multi-Crown CA, perf 14, using typography and are printed from Plate 1.



4d Brown and blue.



6d Olive & rose.

CAYMAN ISLANDS – THE ‘KEY-PLATE’ PERIOD.

KING EDWARD VII.

Third Series.



1/- Violet and green.

5/- Salmon and green.

The 5/- block, above, is one of two recorded plate number blocks.
It is the only plate number block recorded with two margins.

Quantities Printed:-	4d	6240 & 732 overprinted ‘SPECIMEN’
	6d	5040 & 732 overprinted ‘SPECIMEN’
	1/-	4800 & 732 overprinted ‘SPECIMEN’
	5/-	6240 & 732 overprinted ‘SPECIMEN’

480 stamps of the 4d value were surcharged on 12 February 1908.
3690 stamps of the 5/- value were surcharged in November 1907.

The ‘Glover Flaw’.

1907 Series.



48 Possible

42 Possible

40 Possible

19 Possible

CAYMAN ISLANDS -- THE 'KEY-PLATE' PERIOD.

KING EDWARD VII.

1907 Series.



'Glover Flaw'.

Forged High Value.



The example, above, is of a forged stamp with forged postmark, on correct watermark paper. It is believed that the colour of a lower value stamp, from either the second or third series, has been bleached out, and then the forgery executed, with the postmark being forged afterwards.



1/- violet and green on cover, together with the 1905 1d and the 1907 'One Halfpenny' on 1d provisional, cancelled George Town type 4 dated OC 8 07. Although philatelic in nature, only 12 covers are believed to exist bearing this provisional

CAYMAN ISLANDS – THE ‘KEY-PLATE’ PERIOD.

KING EDWARD VII.

The Surcharge Provisionals.

In May 1908 it was discovered that due to substantial orders from abroad, the stock of ½d stamps had been reduced to 17 sheets (2040 stamps). This was estimated to be adequate for two months. As no supply was due, and none possible in such a short time, the decision was taken to resort to surcharging. 4800 stamps (40 sheets) of the 1905 1d carmine were surcharged ‘One Halfpenny’ at the Government Printing Office, Kingston, Jamaica.

The stamps were issued on 30 August 1907, for sale only over the counter.



The strip of three, above shows the surcharge misplaced during printing. The middle stamp of this strip shows the ‘full stop’ missing, ie on the next stamp.



The stamp, above, shows the surcharge dramatically misplaced, so that the full stop is now in the frame line at the left side of the stamp.



The two examples, above, show the constant flaw ‘dot in H’.
This is found on stamp 54 of the surcharge setting (L9/6 and R9/6)

CAYMAN ISLANDS – THE ‘KEY-PLATE’ PERIOD.

KING EDWARD VII.

The Surcharge Provisionals.

The ‘Glover Flaw’.



40 Possible



The block, above, is one of the largest recorded multiples. It shows the constant variety ‘dot in H’ (stamp 54), which occurs on both panes.

CAYMAN ISLANDS – THE ‘KEY-PLATE’ PERIOD.

KING EDWARD VII.

The Surcharge Provisionals.



The strip of three, above, shows the surcharge misplaced during printing.
All three stamps show the ‘full stop’ missing, ie on the next stamp.

The ‘Glover Flaw’.



40 Possible



The stamp, above, although not a revenue stamp, was fiscally used in 1907

CAYMAN ISLANDS – THE ‘KEY-PLATE’ PERIOD.

KING EDWARD VII.

The Surcharge Provisionals.



Cover from GEORGE TOWN GRAND CAYMAN, with type 4 cancel dated NO 21 07 and type R1 registration mark. Jamaica Registered transit cancel dated NO 26 07. Reverse shows transit cancels New York Registered dated 12 – 3 1907, Boston Reg. Div. dated DEC 4 1907 and a further Boston Registered dated DEC 4 1907. The ‘One Halfpenny’ on 1d pair and 2½ pair pay the 2d registration fee and 2½ letter rate for ½ ounce, with 1½d excess payment.



There are believed to be 12 covers in existence bearing this provisional. Cover ex A.J. Watkin and ‘Ambassador’.

CAYMAN ISLANDS – THE ‘KEY-PLATE’ PERIOD.

KING EDWARD VII.

The Surcharge Provisionals.

Towards the end of 1907, it was realised that stocks of some values would run out. At the end of November 1907, both the ½d and 1d stamps of the current issue ran out, almost simultaneously. On the 22 November, 2160 of the 1907 5/- salmon & green were made ready: 1800 were surcharged 1D:

These lasted until 9 December, when a further 360 stamps were surcharged.

At the same time as the 1D surcharge, 1800 stamps were surcharged 1 2 D. Note that no fraction bar was used. These were placed on sale on 26 November.

Miss Gwendolyne A. parsons, the Postmistress, carried out the overprinting of the surcharges.



E



E

The ‘Glover Flaw’.



E

18 Possible



E

The example, above, shows a forged double surcharge.

CAYMAN ISLANDS – THE ‘KEY-PLATE’ PERIOD.

KING EDWARD VII.

The Surcharge Provisionals.



The example, above, shows a jump during the overprinting, resulting in a partial doubling of the surcharge.

The ‘Glover Flaw’.



15 Possible



The two examples, above, show forged overprints.
 The example on the right shows the ‘Glover Flaw’, and is the only recorded example with forged overprint.

CAYMAN ISLANDS – THE 'KEY-PLATE' PERIOD.

KING EDWARD VII.

The Surcharge Provisionals.

Cover from GEORGE TOWN GRAND CAYMAN, with type 4 cancel dated NO 29 07 and type R1 registration mark. Jamaica Registered transit cancel dated DE 7 07. Reverse shows London arrival cancels dated 24 DEC 07 and 25 DEC 07. The 3 x 1 D on 5/- pays the 1d empire ½ ounce letter rate and 2d registration fee.



Only 22 covers are recorded bearing either 1 2 D on 5/- or 1 D on 5/-. Of these 22 covers, 18 use the 1 D with 9 of these being in combination with other values. The remaining 9 covers include 1 single used on a postcard and 6 covers with a single used on each. Thus, there are only 2 covers recorded franked solely with multiples of the 1 D on 5/-. **This is the second largest multiple known on cover.**

Ex Watkin, Meredith, Byl and BWISC Golden Jubilee auction.

This cover is number 5 in the Byl listing.

CAYMAN ISLANDS – THE ‘KEY-PLATE’ PERIOD.

KING EDWARD VII.

The Surcharge Provisionals.



E

1D on 5/- used on part of a picture postcard.
One complete picture postcard is recorded bearing this value.
This is the only other recorded use on a picture postcard.



E

Pair of 1 2D on 5/- used on first day of issue, 26 November 1907

Fiscal Use of the surcharges on 5/-.



The stamps, above, although not revenue stamps, were fiscally used.

CAYMAN ISLANDS – THE ‘KEY-PLATE’ PERIOD.

KING EDWARD VII.

Fourth Series.



Requisition number 74/07, of 20 November 1907, submitted to De La Rue by the Crown Agents, asked for 96 sheets of the ½d value and 102 sheets of the 1d value, ie 11520 and 12240 stamps respectively. These were of the new Postage –Revenue design. The two values arrived and were placed on sale on 27 December 1907, filling the void that had rendered necessary the former provisionals.

The nine values are Wmk Multi-Crown CA, perf 14, using typography and are printed from Plate 1, with the 1d & 6d values additionally printed from Plate 2.



½d Green

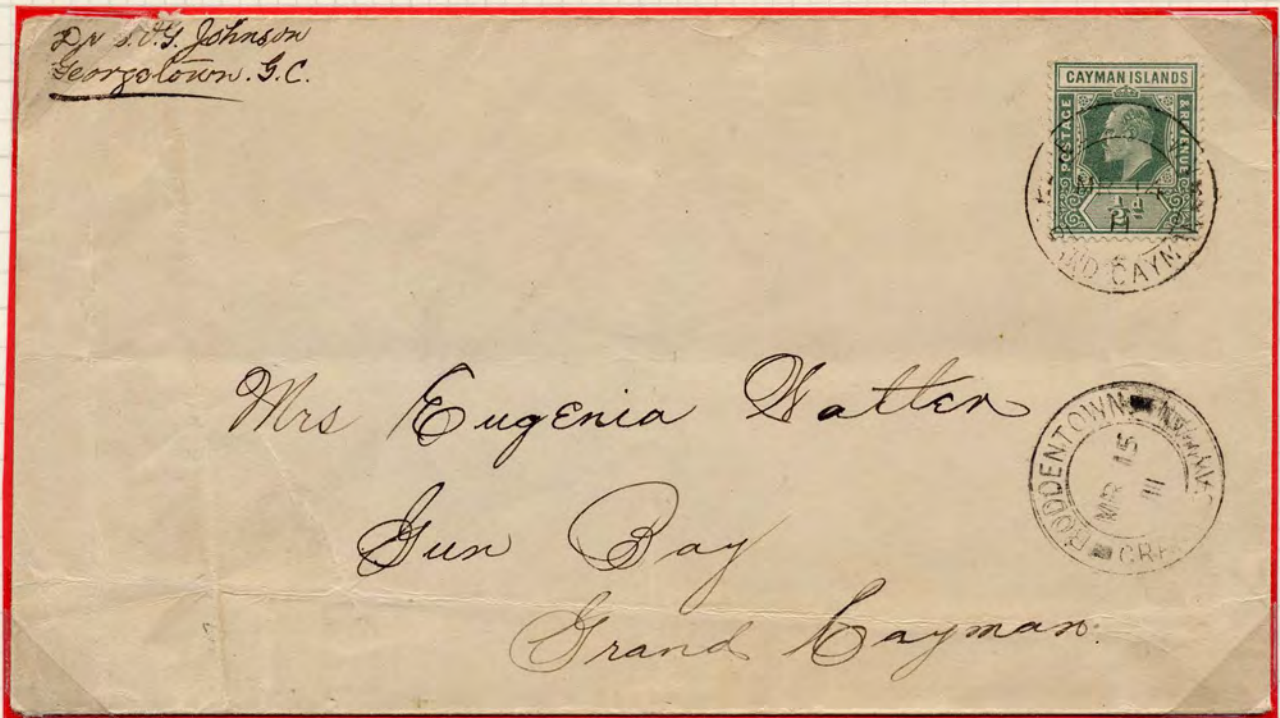
CAYMAN ISLANDS – THE ‘KEY-PLATE’ PERIOD.

KING EDWARD VII.

1907 - 1909 Series.



Fourth series 1/2d on internal cover paying the correct 1 ounce internal letter rate.



Fourth series 1/2d on internal cover paying the correct 1 ounce internal letter rate.
This cover is one of the very few Rural Post period covers that does not have a Rural Post handstamp.

CAYMAN ISLANDS – THE 'KEY-PLATE' PERIOD.

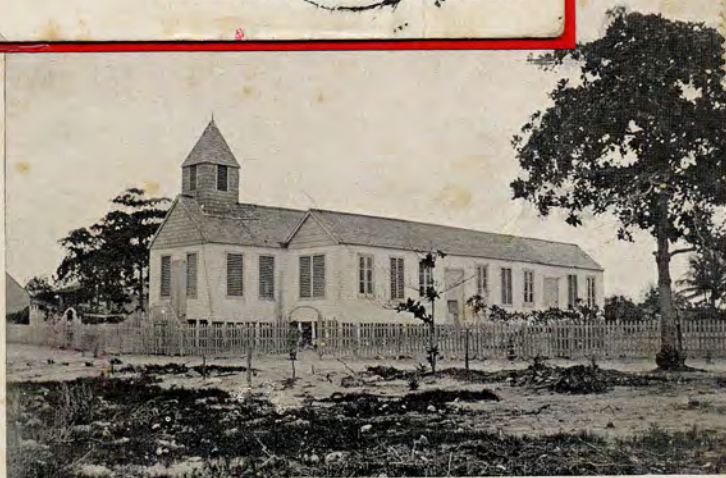
KING EDWARD VII.

1907 - 1909 Series.

Two postcards: The upper one shows 'Shedden Road, Georgetown', the lower shows the 'Presbyterian Church, Georgetown'.



SHEDDEN ROAD, GEORGETOWN, GRAND CAYMAN.



PRESBYTERIAN CHURCH, GEORGETOWN, GRAND CAYMAN.



Two Postcards, using two 1/2d's to pay the correct postage to South Africa.

CAYMAN ISLANDS – THE ‘KEY-PLATE’ PERIOD.

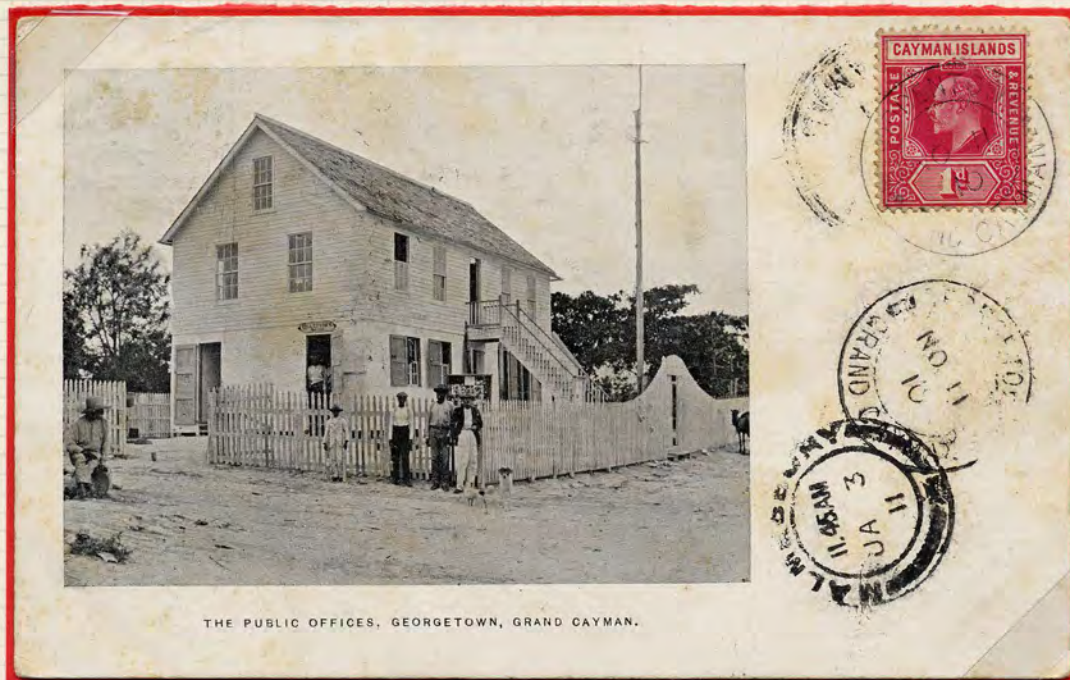
KING EDWARD VII.

1907 - 1909 Series.

Two postcards: The upper one shows the ‘Government House’ at Georgetown, the lower one shows the Public Offices at Georgetown, where the Post Office was situated.



Postcard using two 1/2d's to pay the correct postage rate to South Africa.



Postcard using the 1d to pay the correct postage to South Africa.
Cancelled Boddentown NO 11 10 with Georgetown transit cancel NO 11 10

CAYMAN ISLANDS – THE 'KEY-PLATE' PERIOD.

KING EDWARD VII.

Fourth Series.



1d Carmine

1

The 2 2 D on 4d Provisional.

By the end of January 1908, the ½d and 1d values were running low, the stock of the Postage – Postage 2½d was almost exhausted and the number of 4d stamps was not large. This situation did not give rise to concern, since it was expected that a replenishment of the low values, ordered on requisition number 74/07 of 18 February 1908, would arrive by a steamer due at the end of February, so that a supply of the 2½d stamp would be available to frank foreign letters that would be taken by the same steamer when she departed.



E

These plans were upset by the unexpected arrival of the yacht 'Zenaida' on 12 February 1908 and the offer by its' owner, Sir Frederick Johnson, to convey any foreign mail to Ceinfugos, Cuba. As there was no regular mail-ship plying to the Cayman Islands at this time, the offer was accepted.

It was considered too risky to use the slender stock of current stamps. In order to ease the situation, four sheets (480 stamps) of the 4d stamp were handed to the Inspector of Police, Mr. J.H. O'Sullivan, for surcharging. The stamps were placed on sale on 14 February 1908 and sold out the same day.



E

Forged surcharge.

CAYMAN ISLANDS – THE ‘KEY-PLATE’ PERIOD.

KING EDWARD VII.

1907 - 1909 Series.



Government House, Grand Cayman.

Postcard using 1d to pay the correct postage rate to South Africa.



VICTORIA PARK, GEORGETOWN

Photo by Miss Helen Hirst

Postcard using the 1d to pay the correct postage to South Africa.
The photographer, Miss Helen Hirst, is the Commissioner's daughter.

CAYMAN ISLANDS – THE ‘KEY-PLATE’ PERIOD.

KING EDWARD VII.

1907 - 1909 Series.



Ex Watkin.

Fourth series 1/2d and 6d cancelled with the type 1, ‘RURAL POST COLLECTION. GRAND CAYMAN.’ handstamp that was issued to the waggoner.



Ex Watkin.

Fourth series 1d cancelled with the ‘WEST BAY Grand Cayman. RURAL Post Collection.’ handstamp.



Fourth series 1d on ‘EAST END Grand Cayman. Rural Post Collection.’ cover, paying the correct 2 ounce internal letter rate.

Note, the spelling error ‘G’ for ‘C’ in ‘Collection’, that was never corrected.

CAYMAN ISLANDS – THE ‘KEY-PLATE’ PERIOD.

KING EDWARD VII.

Fourth Series.



2½d Ultramarine



3d Purple/yellow



The 3d purple/yellow printings show paper variations. This is probably due to there being four printings of this value, between February 1908 and March 1909.

CAYMAN ISLANDS – THE 'KEY-PLATE' PERIOD.

KING EDWARD VII.



East End Type 1 Cancellor.

In the early years of the twentieth century, the Commissioner arranged for a small post office to be opened at East End, to serve the community at the eastern end of the island. The post office was issued with the type 1 canceller which had no year slug. In 1908 there was a change of policy, with a change of Commissioner, and the East End Post Office was closed. It was believed that the post office was reopened on 10 September 1913. New information to hand, shows that the East End Post Office was reopened sometime earlier and the type 1 canceller was again used. This canceller was found to be damaged, thus a new canceller was ordered and this was first used on 10 September 1913.

The cover, below, shows the type 1 canceller used to cancel a KEVII 2½d. The KGV 2½d was not ordered until requisition 33/14 of 29 May 1914. The cover has been cancelled at East End on JY 17 1913 and has a transit arrival cancel at Boddentown for the same date. The cover stayed at Boddentown overnight and received a transit departure cancel JY 18 1913. The reverse shows a Georgetown transit cancel for JY 18 1913. The KEVII 2½d pays the ½ ounce non Empire rate.

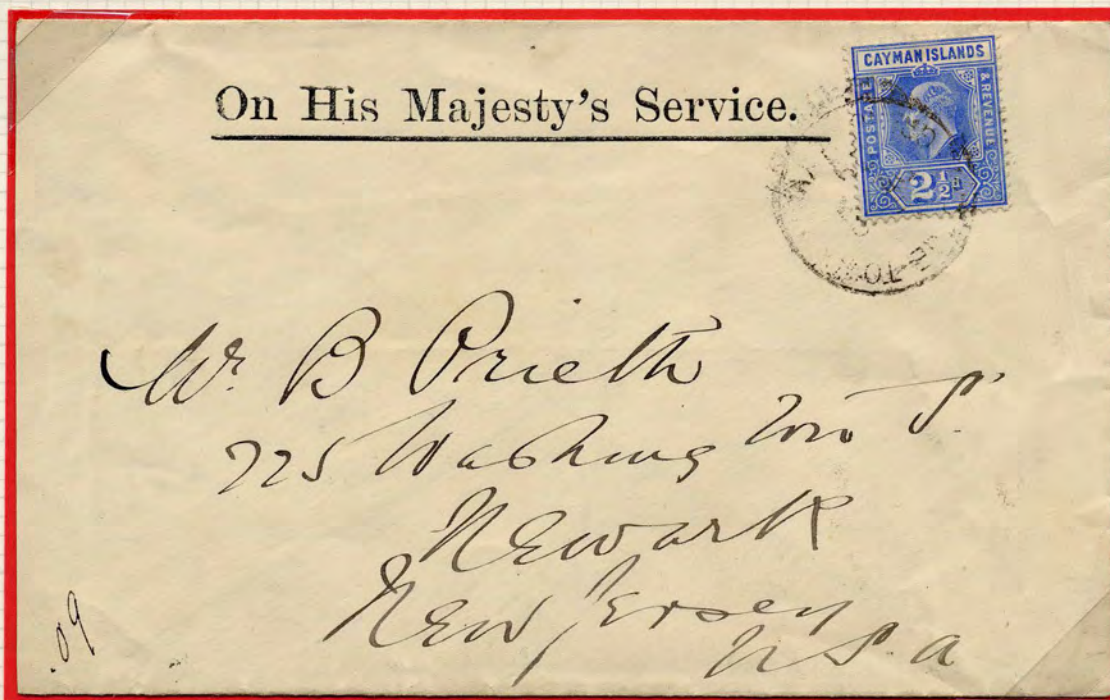


The only recorded cover with East End type 1 cancel.

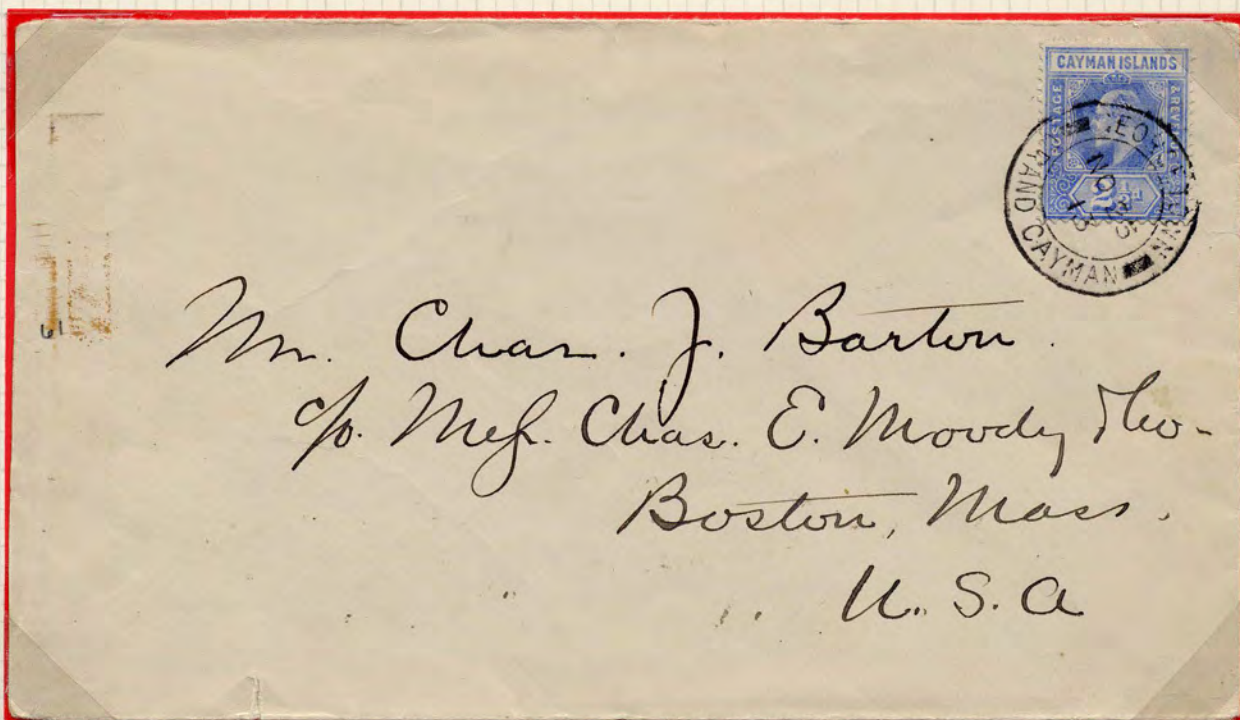
CAYMAN ISLANDS – THE ‘KEY-PLATE’ PERIOD.

KING EDWARD VII.

1907 - 1909 Series.



Fourth series 2½d on OHMS cover to the USA paying the correct ½ ounce letter rate.



Fourth series 2½d on cover to the USA paying the correct ½ ounce letter rate.

CAYMAN ISLANDS – THE ‘KEY-PLATE’ PERIOD.

KING EDWARD VII.

Fourth Series.



4d Black & red/yellow



The second largest multiple recorded of the 1908 4d black & red/yellow.

CAYMAN ISLANDS – THE ‘KEY-PLATE’ PERIOD.

KING EDWARD VII.

Fourth Series.



6d Dull & bright purple – Plate 1 printing.



6d Dull purple & violet purple – Plate 2 printing.



The example, above, with no Plate number below the right hand stamp, indicates that this block is from the Plate 2 printing of 7 July 1911, requisition number 52/11

CAYMAN ISLANDS – THE ‘KEY-PLATE’ PERIOD.

KING EDWARD VII.

Fourth Series.



1/- Black & green.



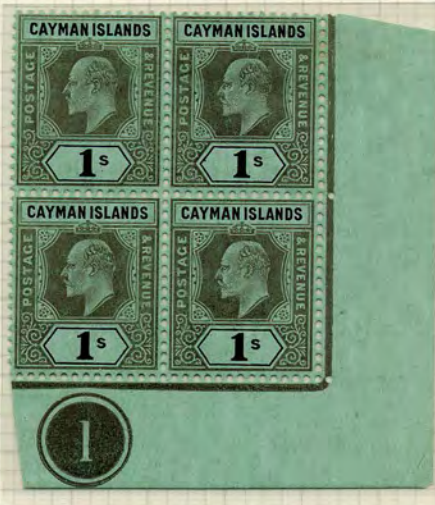
5/- Green & red/yellow

CAYMAN ISLANDS – THE ‘KEY-PLATE’ PERIOD.

KING EDWARD VII.

Fourth Series.

The 1/- was also printed, and the 10/- only printed, using Wmk Crown CA paper.



1/- Black/green.



10/-Green & red/green.



The example, above, shows the ‘swan-necked’ ‘S’ (the second ‘S’ in ‘Islands’). This flaw appears on the left hand pane, row 1 stamp 6 (L1/6).

Quantities printed:-	½d	91768 & 449 overprinted ‘SPECIMEN’
	1d	115800 & 449 overprinted ‘SPECIMEN’
	2½d	67560 & 449 overprinted ‘SPECIMEN’
	3d	37440 & 449 overprinted ‘SPECIMEN’
	4d	6240 & 449 overprinted ‘SPECIMEN’
	6d	35520 & 449 overprinted ‘SPECIMEN’
	1/-	18840 & 449 overprinted ‘SPECIMEN’
	5/-	6240 & 449 overprinted ‘SPECIMEN’
	10/-	3000 & 449 overprinted ‘SPECIMEN’

CAYMAN ISLANDS – THE ‘KEY-PLATE’ PERIOD.

KING EDWARD VII.



The stamps, above, all show faked cancels. The 6d is from Plate 2.



The stamp, above, has a ‘Madame Joseph’ type 110 forged cancellation.



1909 cover, from Georgetown to London, philatelic but bearing the 6d from Plate 1 and the 5/- value.

CAYMAN ISLANDS – THE ‘KEY-PLATE’ PERIOD.

KING EDWARD VII.

1907 – 1909 Series.

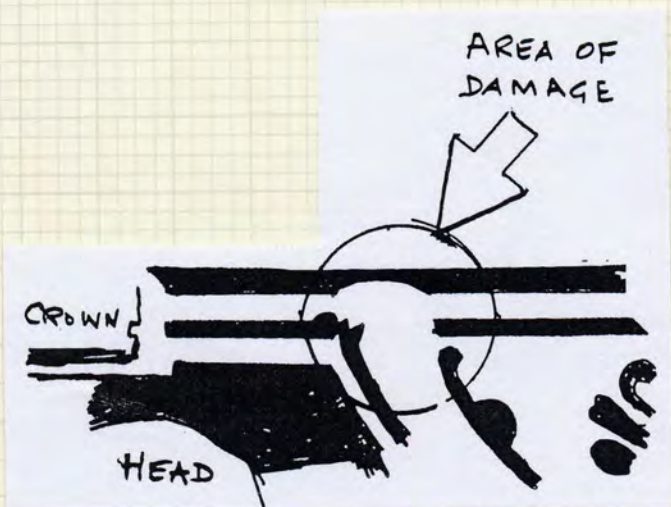


CAYMAN ISLANDS – THE ‘KEY-PLATE’ PERIOD.

KING EDWARD VII.

The ‘Spavin Flaw’.

The ‘Spavin Flaw’ is an upward indentation in the head plate frame line to the right of the crown. It occurs on all values printed from the King Edward VII Postage – Revenue Plate 1, and appears on the third stamp in the first row of the left pane (L1/3).



Enlarged detail.

Example showing position L1/3.



764 or 765 Possible



563 Possible



312 Possible



157 Possible



52 Possible



157 Possible

CAYMAN ISLANDS – THE ‘KEY-PLATE’ PERIOD.

KING EDWARD VII.

Fourth Series.

The 1d & 6d values printed from the previously unrecorded Plate 2.



1d Carmine



6d Dull purple & violet-purple

Quantities printed:-

Plate 1	1d carmine	223200
Plate 2	1d carmine	120000
Plate 1	6d dull purple & bright purple	49920
Plate 2	6d dull purple & violet-purple	46080

CAYMAN ISLANDS – THE ‘KEY-PLATE’ PERIOD.

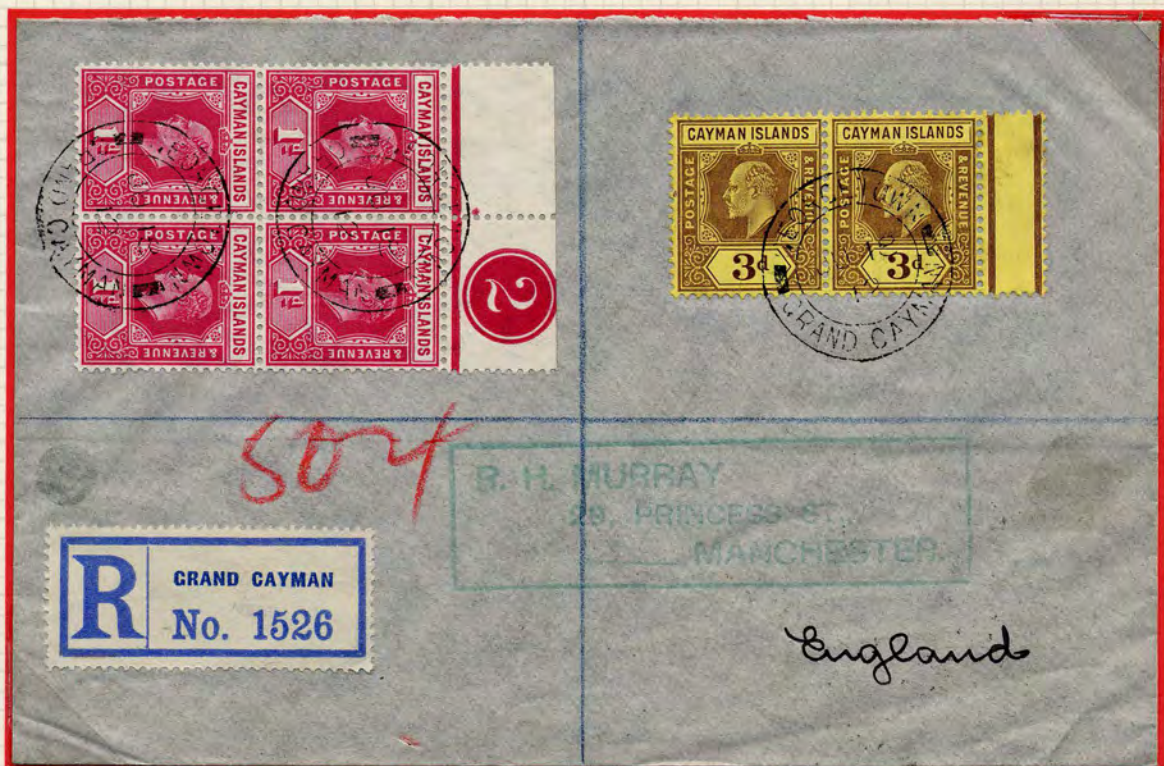
KING EDWARD VII.

1907 - 1909 Series.



Fourth series 1d empire postcard rate on a reply card sent by R.C. Young, the Presbyterian Minister, to acknowledge receipt of 9 volumes of reports on the World Missionary Conference. Annotated, 'sent through U.S. Foreign Mission Committee'.

This is the only recorded example of a reply printed card sent from the Cayman Islands.



Fourth series 1d Plate 2 block on cover. One of only two recorded examples used on cover.

CAYMAN ISLANDS – THE ‘KEY-PLATE’ PERIOD.

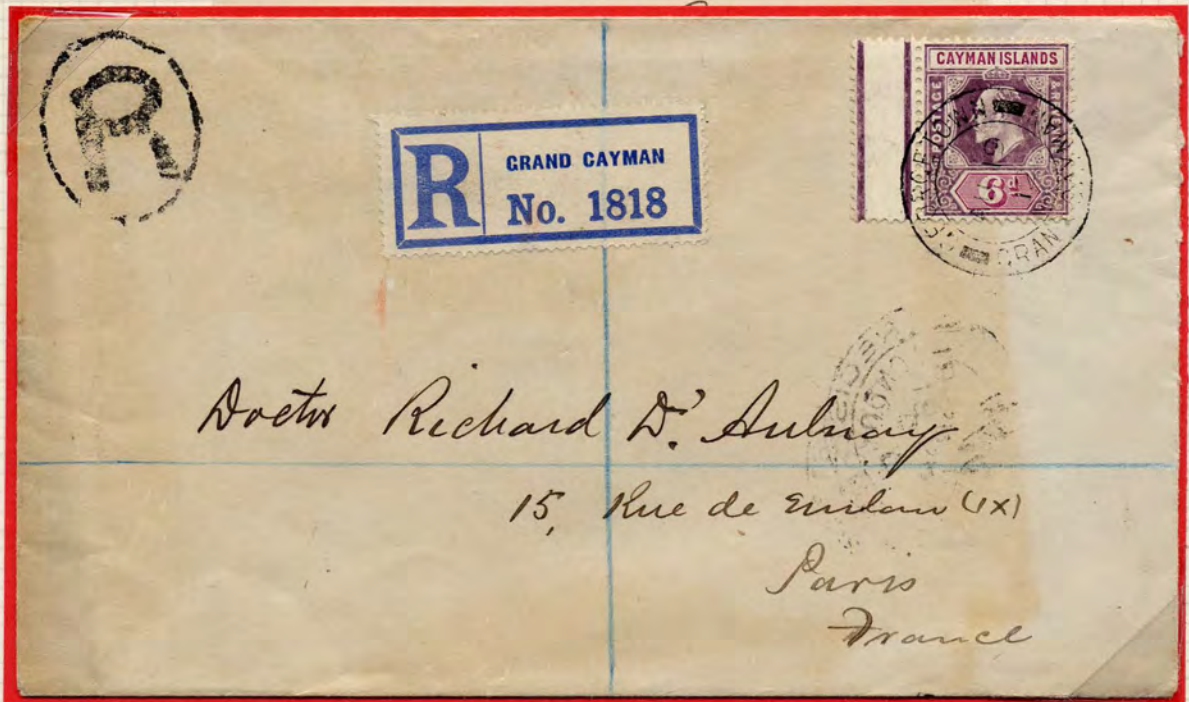
KING EDWARD VII.

1907 - 1909 Series.

Post office
Grand Cayman
19/8/12

Dear Sir
Enclosed please find
stamps as per your
order of 8/7/12 including
Pos & Registration

Yours very truly
A Bodden



Fourth series 6d, from Plate 2, to France with letter enclosed from the Postmaster A. Bodden

CAYMAN ISLANDS – THE ‘KEY-PLATE’ PERIOD.

KING EDWARD VII.

The 1D on 4d Revenue Stamp.

In May 1908 the stock of low value stamps, at George Town Post Office, ran out. During this shortage an American inhabitant applied for a sheet of 1d stamps. On being informed that none were available, he lodged a complaint: As a result, the Commissioner, George Stephenson Shirt Hirst, gave instructions that a small quantity of the current 4d stamps be surcharged 1D. (This shows that the supply of 1d stamps – 12240 – ordered on requisition number 74/07, of 20 November 1908, had sold out. The 4d was ordered on the same requisition number but dated 18 February 1908, with the next supply of the 1d value ordered on requisition number 48/08 of 23 June 1908.)



These stamps were to be used solely for fiscal, and not postal, use. Examples are known used and were either cancelled by favour or passed unnoticed, when used on an envelope in combination with other denominations.



Ex Meredith.



Two printings of the surcharge were carried out. The dates of issue being 12 May and 13 May 1908. The total number surcharged was 396, vis: Three sheets and thirty-six odd copies.