

Queen Victoria Cayman Brac



Forerunner Jamaica used in Cayman Brac
1^d red 'Falls' Z 26 January 1st 1901.



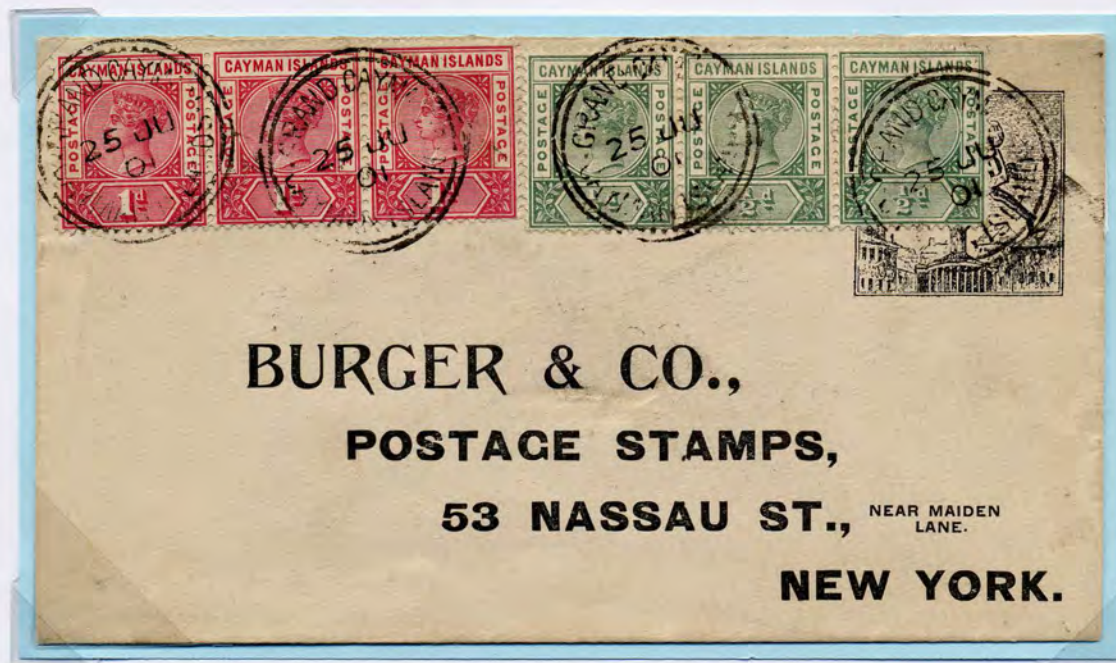
1902 commercial cover at 2½^d foreign letter rate from Cayman Brac to USA.

Queen Victoria

Two printings of these two low values were shipped to Jamaica in September 1900 on S.S. Elbe and June 1901 on S.S. Atrato.

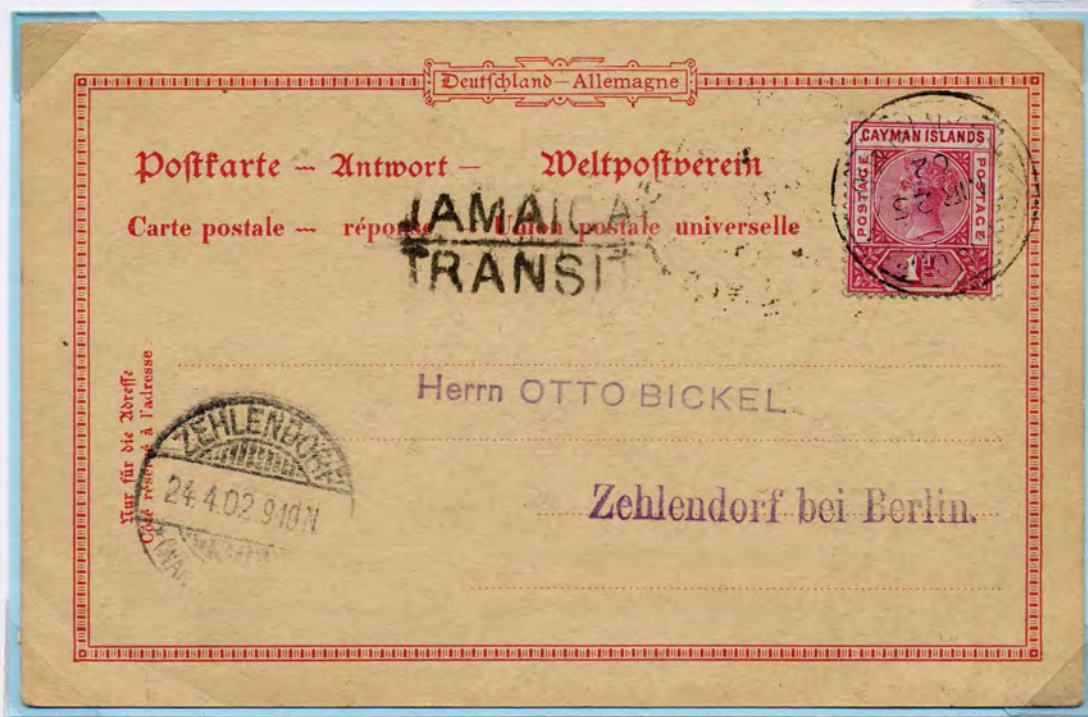


Covers of June and October 1901 for both printings.

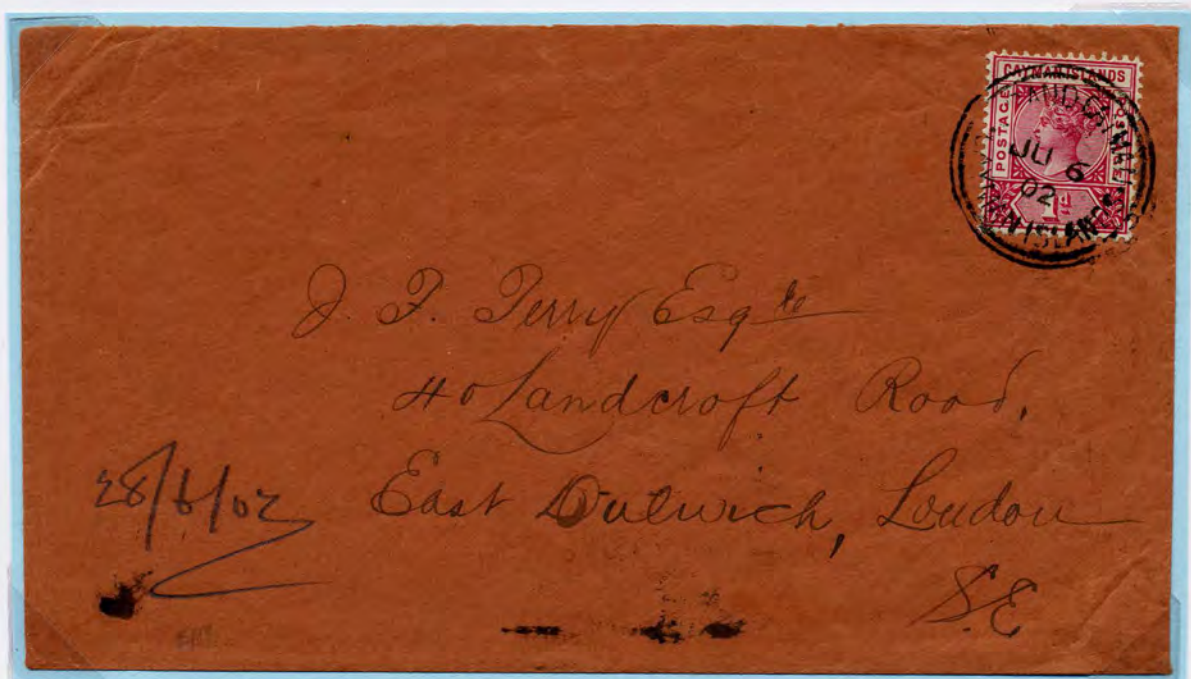


Penny Rate

1^d Victoria on returned March 1902 German PSC. with JAMAICA TRANSIT one of only two noted from Cayman Islands. Earliest use of postcard and only use of foreign PSC.

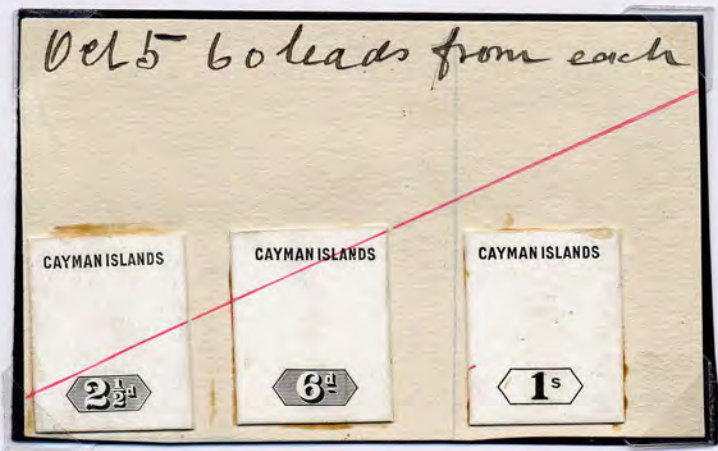


1^d Victoria on June 1902 cover to England with Key West, Florida transit on reverse for direct route.



Postage Postage Die Proofs

Name and Duty Die Proofs out of the De La Rue Archives for new values $2\frac{1}{2}^d$, 6^d and 1^s .



Early Cayman Island Mail

Isolated off the R.M.S.P. mailboat routes an irregular service existed until a monthly steamship service was established in March 1908. The rates and routes of this early mail are shown.

Mail was sent by schooners via Jamaica, Cuba and US Gulf Ports. The earliest records are for 1904/05 when approx. 550 letters were conveyed from the two main islands per month. The average mail was of 150 items.

Most of the mail from 1901-1907 is commercial and the survival rate is thus low.

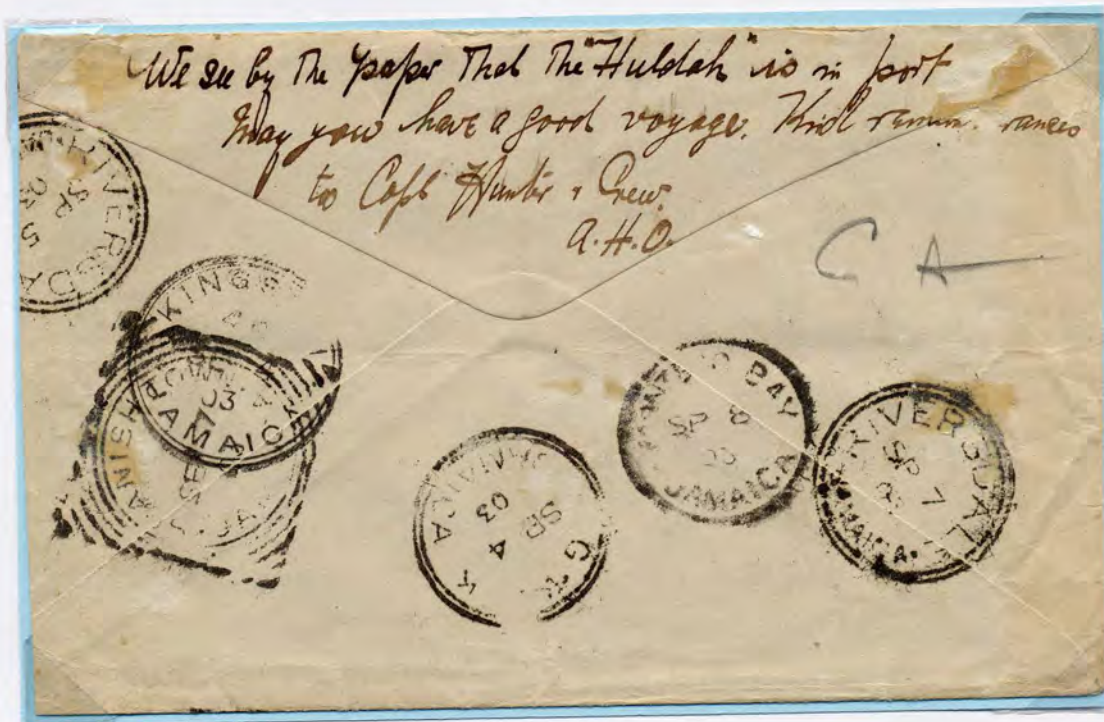
Foreign Letter Rate



Feb. 1902 cover at 2 ½^d foreign letter rate and **unusual route** via Cayman Brac and Jamaica to New York.

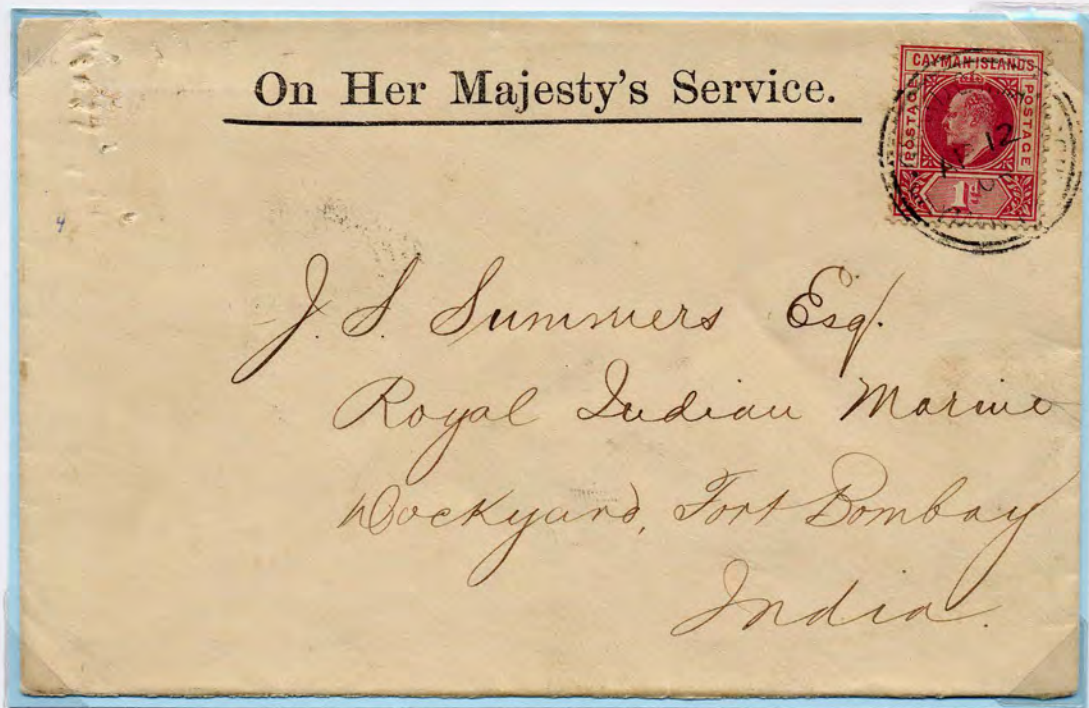
Schooner Mail

Front and back of similar August 1903 Schooner Mail covers with 1d and ½ d x 2 to Jamaica. Sent to Bog Walk, St Catherines, and posted on to the schooner when it arrived at Montego Bay various transits across Jamaica.



Empire Penny Rate

Edward 1^d on April 1904 cover to India, **only known** example, Jamaica and Sea Post Office transits.



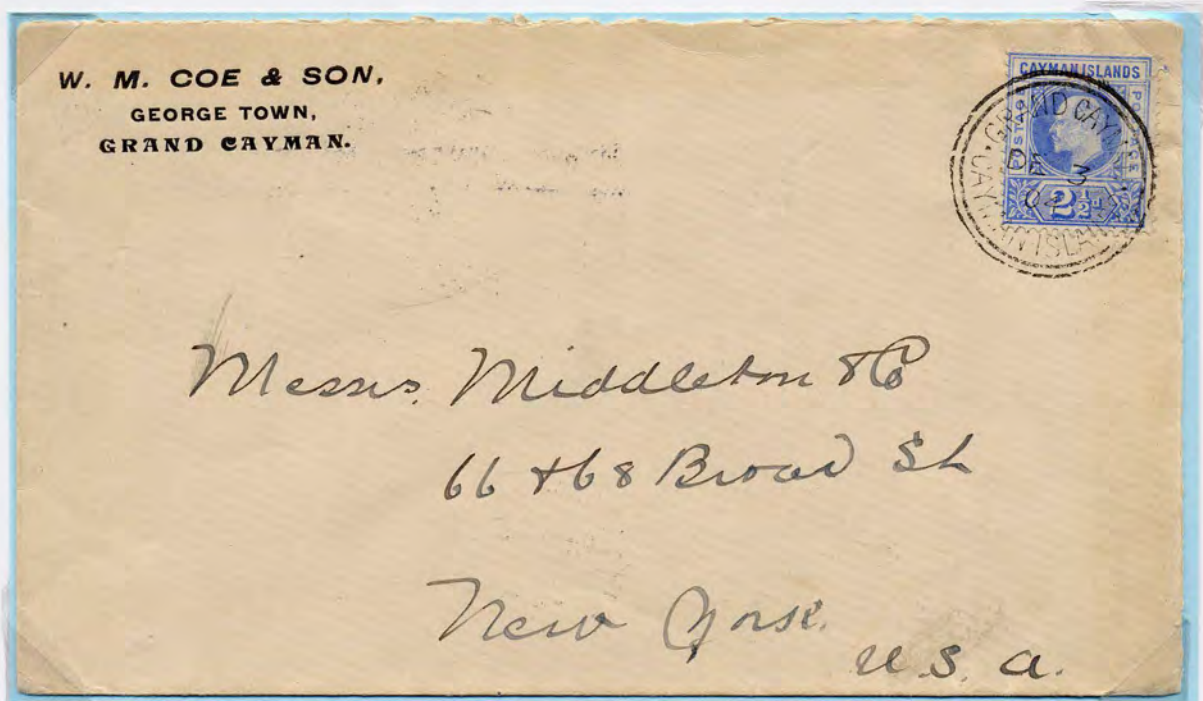
Double 1d Empire Rate on June 1903 cover with Cayman Brac type II cancellation via Jamaica and New York to Canada.



Mail via Jamaica

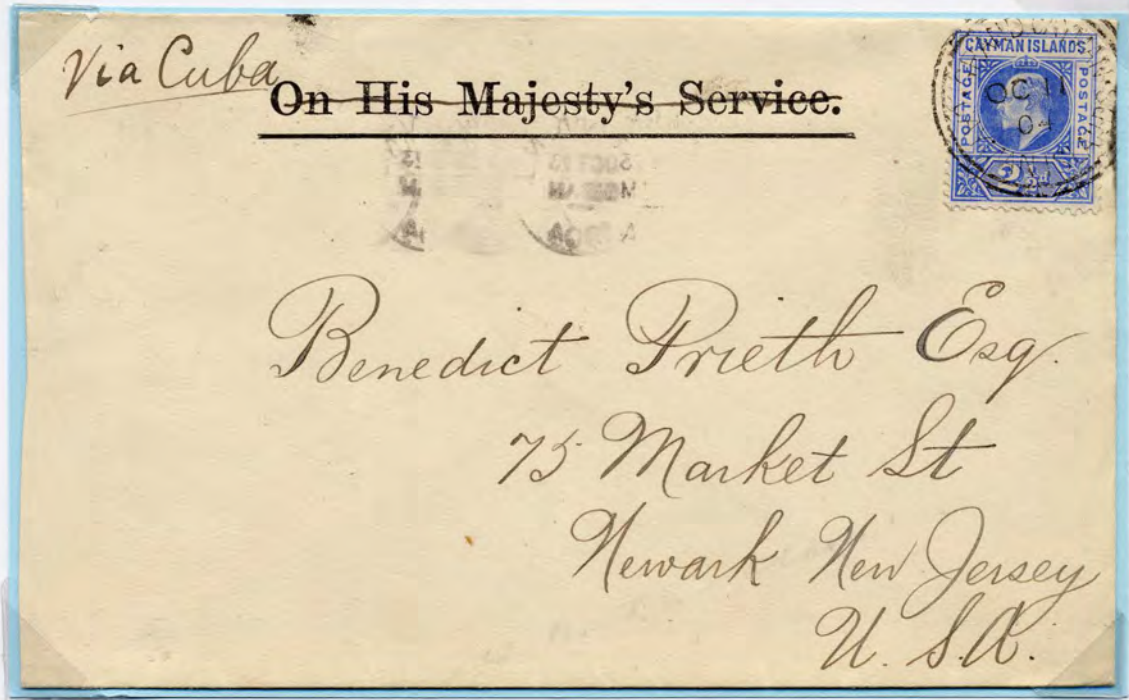
Two 1904 covers from Cayman Brac with type II in May and Grand Cayman. IIIa from Georgetown in December via Jamaica.

Transit times of eleven and nine days to Jamaica, six and seven days to USA.



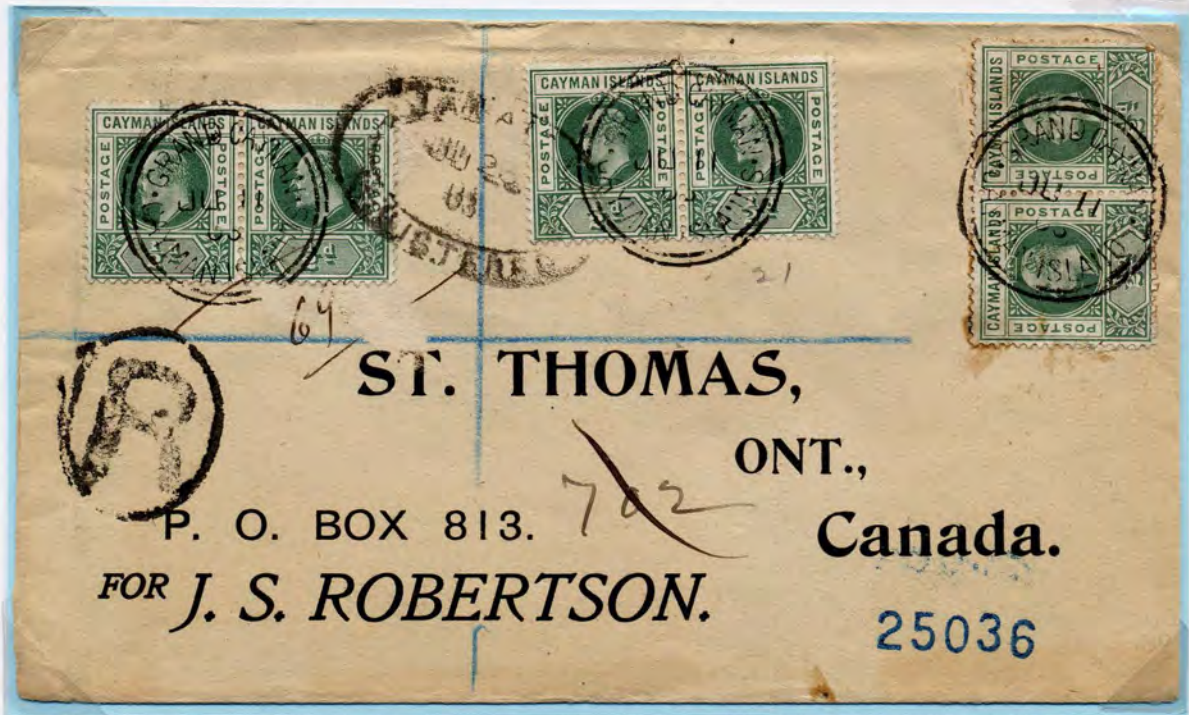
Mail via Cuba

Front and back of two 1904 2 1/2^d foreign letter rate covers to USA via Tuna de Zaza, Cuba to New Jersey and Cincinnati.



Registered Mail

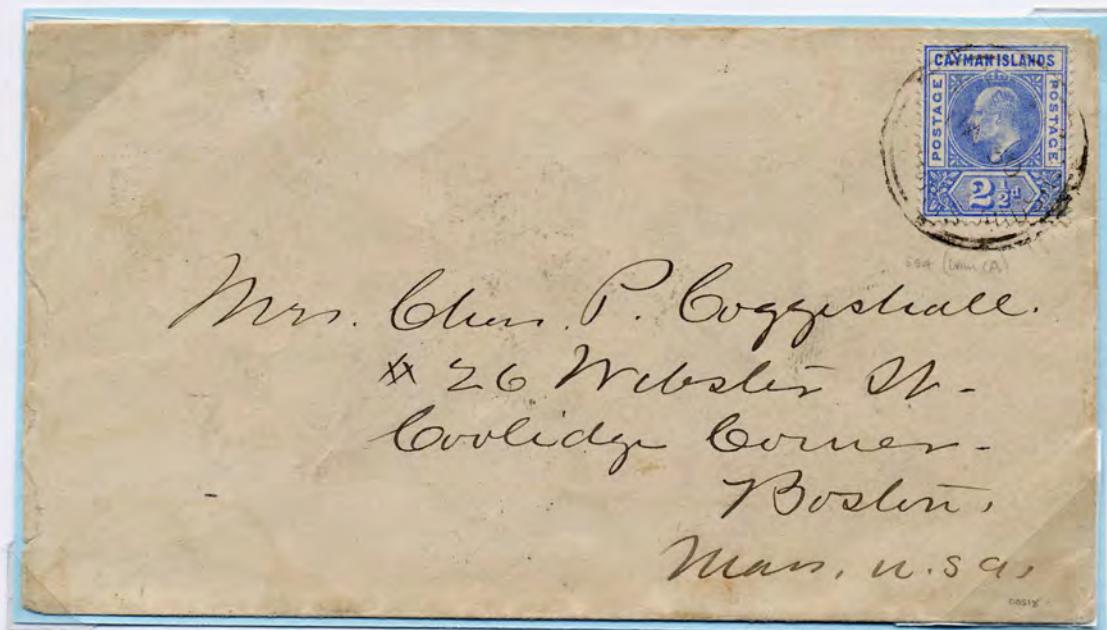
June 1903 cover with six halfpenny stamps paying 1^d Empire and 2^d registered rate to Canada via Jamaica.



February 1905 cover with 1^d and 6^d values paying double 2 ½^d foreign and 2^d registered letter rate.

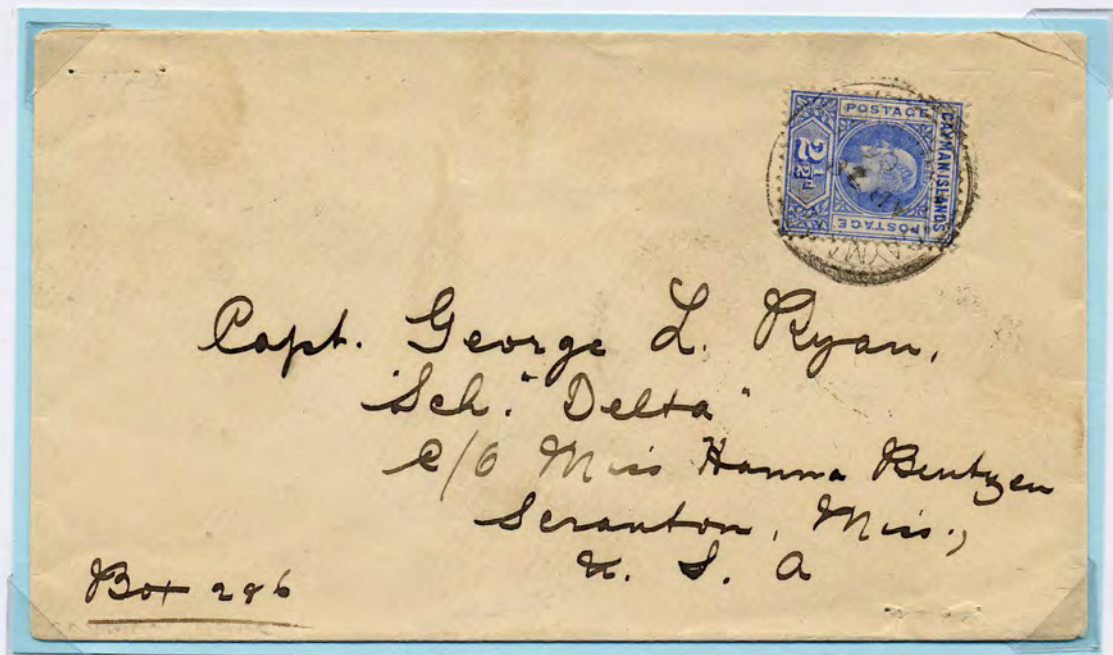
Foreign Letter Rate

1904 cover from Cayman Brac with Type II and 1905 cover from Georgetown with Type IIIa, both at $2\frac{1}{2}^d$ foreign letter rate.



Schooner Mail

April and May 1906 Schooner Mail covers from Cayman Brac to USA. Schr. Union was lost in the hurricane of August 1909 off Cayman Brac; it weighed 72 tons. Schr. Delta is not recorded in the 1909 handbook.



Multiple Rate

Large 1907 commercial cover with George Town Type IV; and $\frac{1}{2}^d \times 14$ stamps paying $2\frac{1}{2}^d \times 2$ double foreign letter rate for the extra $\frac{1}{2}$ oz and 2^d registration.



Mail via Gulf Ports

June 1902 and 1907 covers with direct transits of Key West, Florida and Mobile, Alabama. Mobile registration label applied in error as insufficiently paid for this service.



Edward VII Bicoloured Series

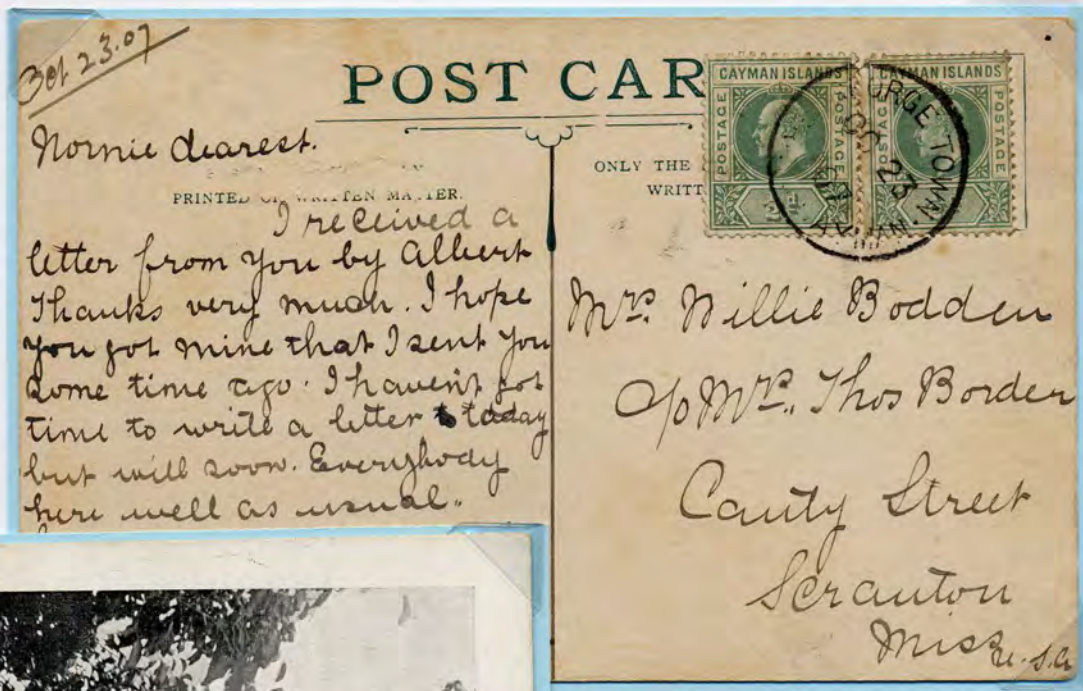
Trial colour proofs

Imperforate proofs of ½^d mauve and orange with 1s orange and blue.



Postcard Rates

October 1907 Cayman PPC **earliest recorded** with two halfpenny stamps paying the 1^d postcard rate. November 1907 PPC single One Halfpenny on 1^d surcharge paying the **printed matter rate**.



One Halfpenny on 1^d Surcharge Provisionals

Empire and Registered Rate

The first Cayman surcharge was issued on August 30th 1907. Early examples are seen on philatelic covers in early 1907. Correctly rated covers are seen in November.



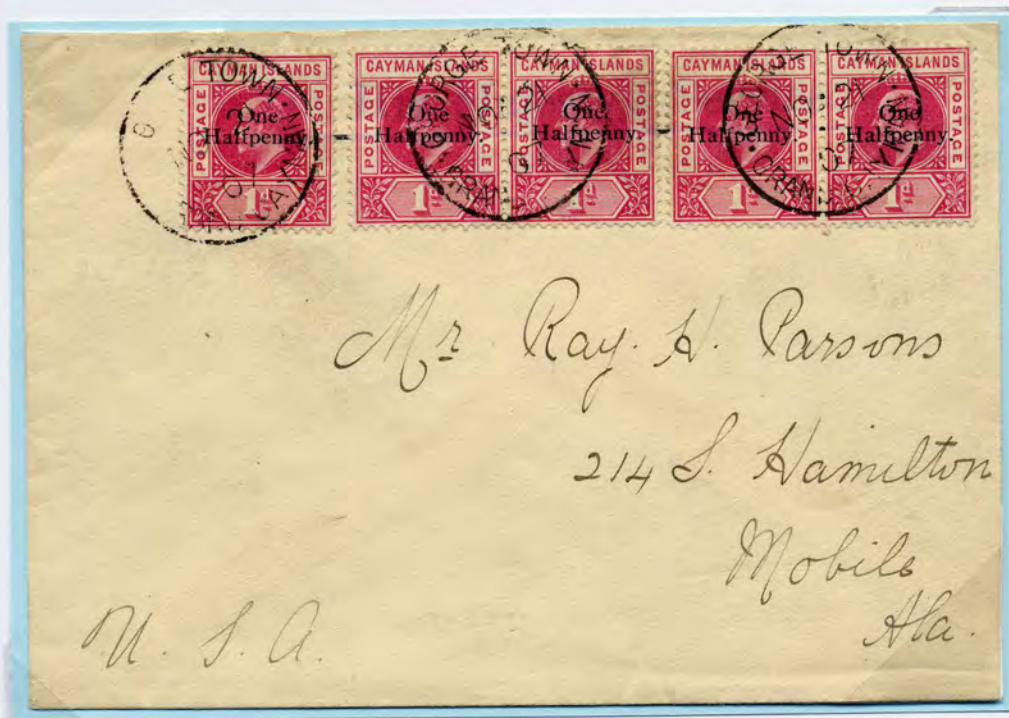
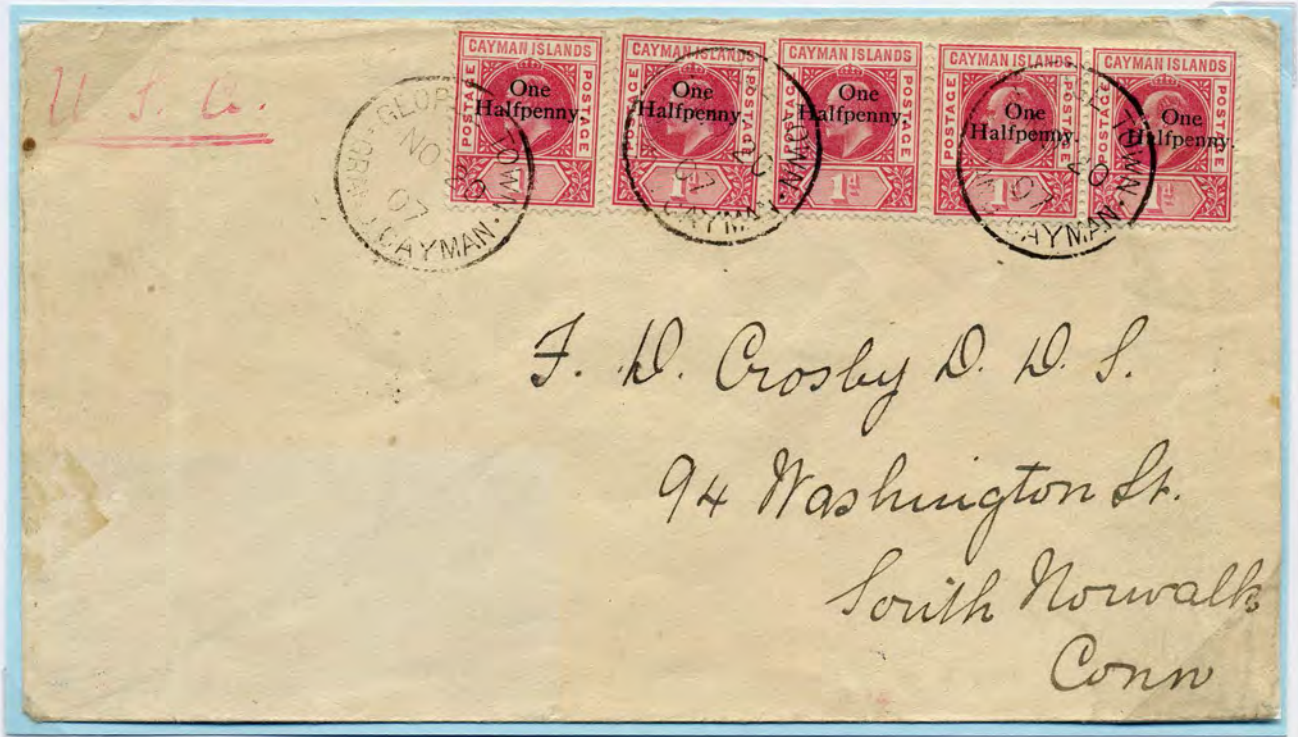
Six surcharges on November 1907 cover to England at 1^d empire and 2^d registered rates.

Large R in circle handstamp and transit registration label applied at Birmingham.

One Halfpenny on 1^d Surcharge Provisionals

Foreign Letter Rate

Two covers with five surcharges sent by Miss Parsons the post mistress to USA in November 1907.



Surcharge Provisionals

Combined Values 1/2D and 1D on 5/-

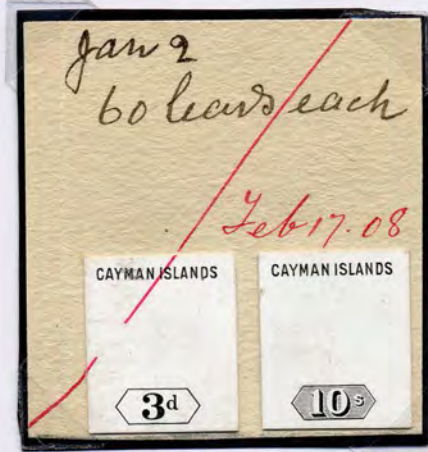
These surcharges were placed on sale 23rd and 26th November when ½ d postage postage and one half penny on penny surcharge ran out within days of each other. They lasted the month until the new postage and revenue ½ d and 1d arrived in December.



Both values on December 3rd 1907 cover to French collector from Miss Parsons fulfilling his order for low value stamps ½ d, 1d, 2½ and 4d which would have been enclosed. Only a few covers have both surcharges.

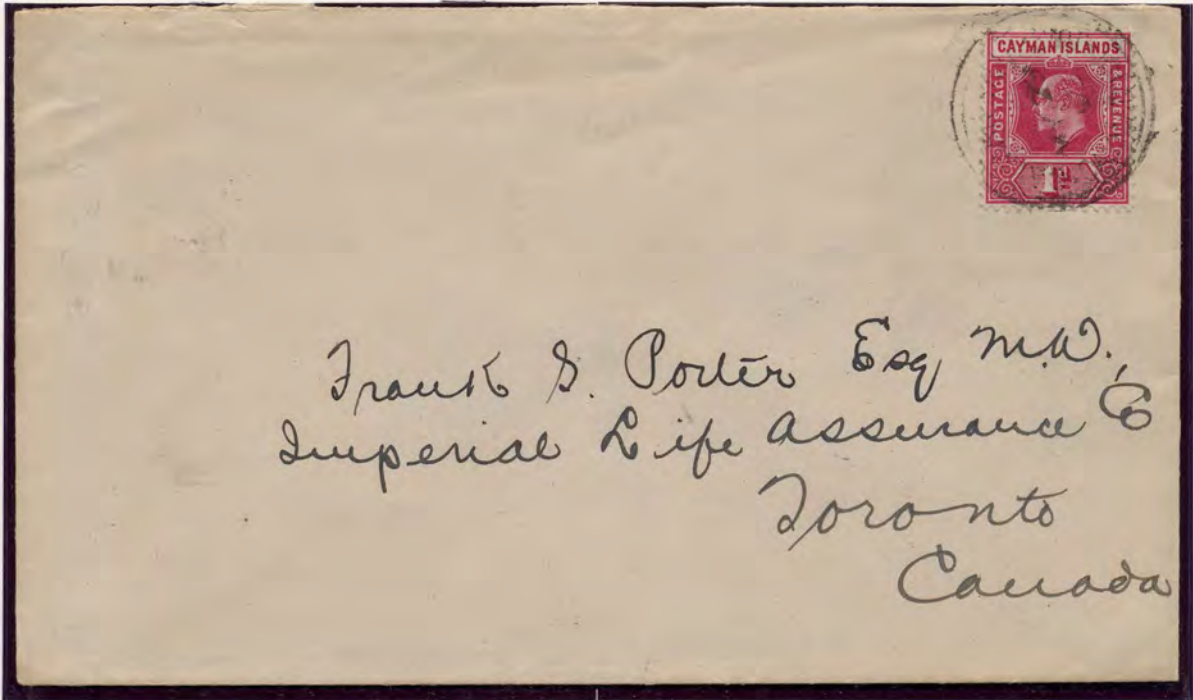
Postage and Revenue Die Proofs

Name and Duty Die Proofs out of the De La Rue Archives for new values 3^d and 10s.

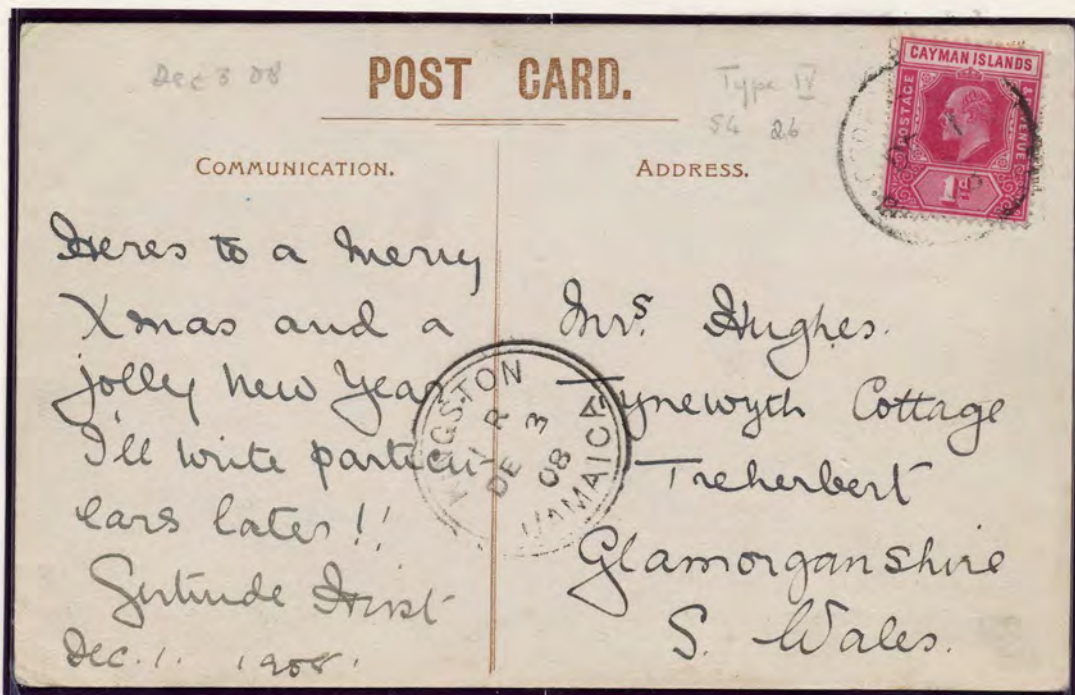


1908 SERIES: 1d, EMPIRE AND POST CARD USAGE

Payment of Empire letter rate to Toronto, Canceled Stake Bay 2 CDS, MY 29/09
and backstamped Kingston transit CDS, Ju 4/09.

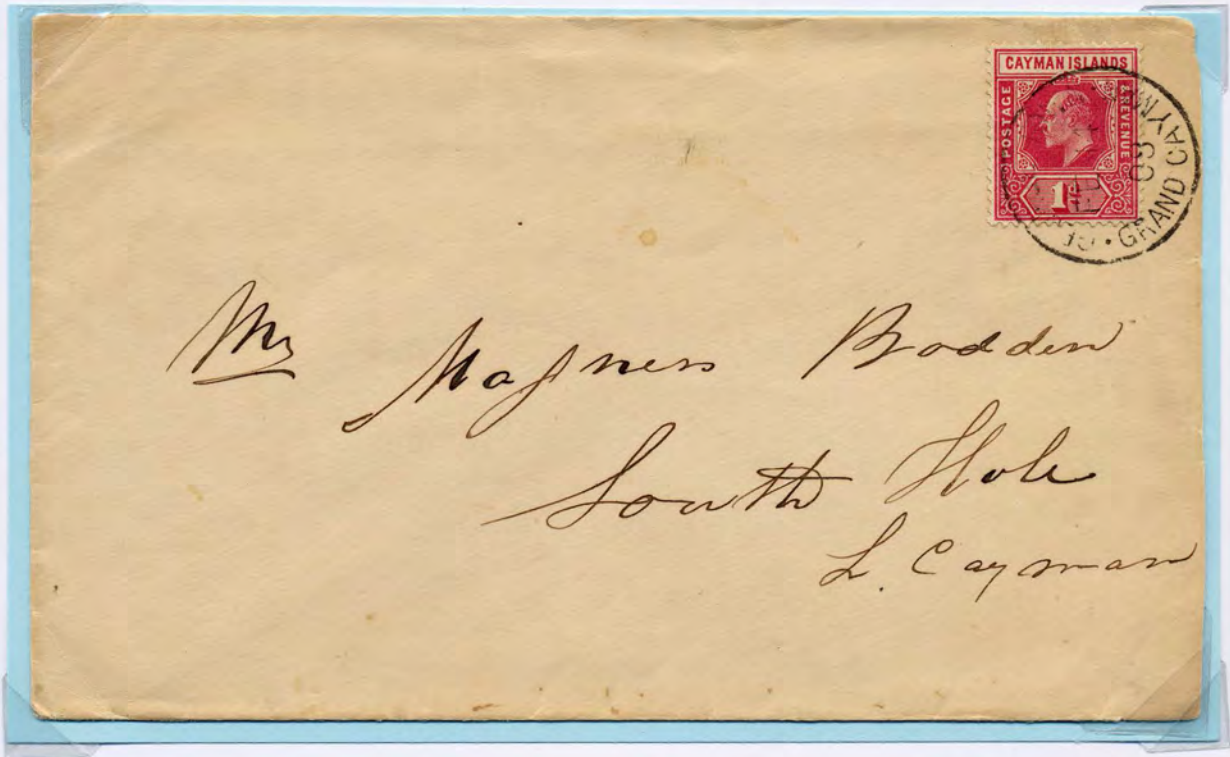


UPU Post Card rate to Wales. Canceled Georgetown 4 CDS, DE 1/08 with Kingston
transit CDS DE 3/08. The rapid trip to Kingston was made by steamship.

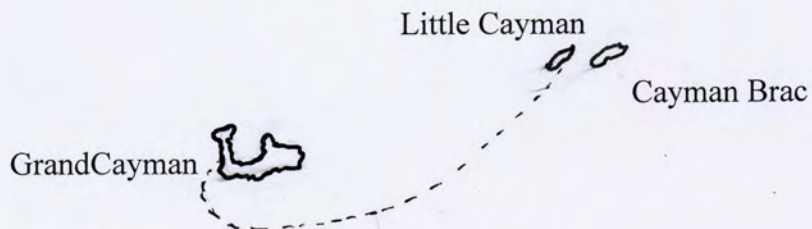


Inter Island Mail

Until the new local postage rates were approved in February and enacted in June 1908 the local inter island letter rate was 1^d - the same as to England and colonies.



February 14th 1908 valentine cover to Magnus Bodden,
Master Mariner, South Hole, Little Cayman (pop. 100)

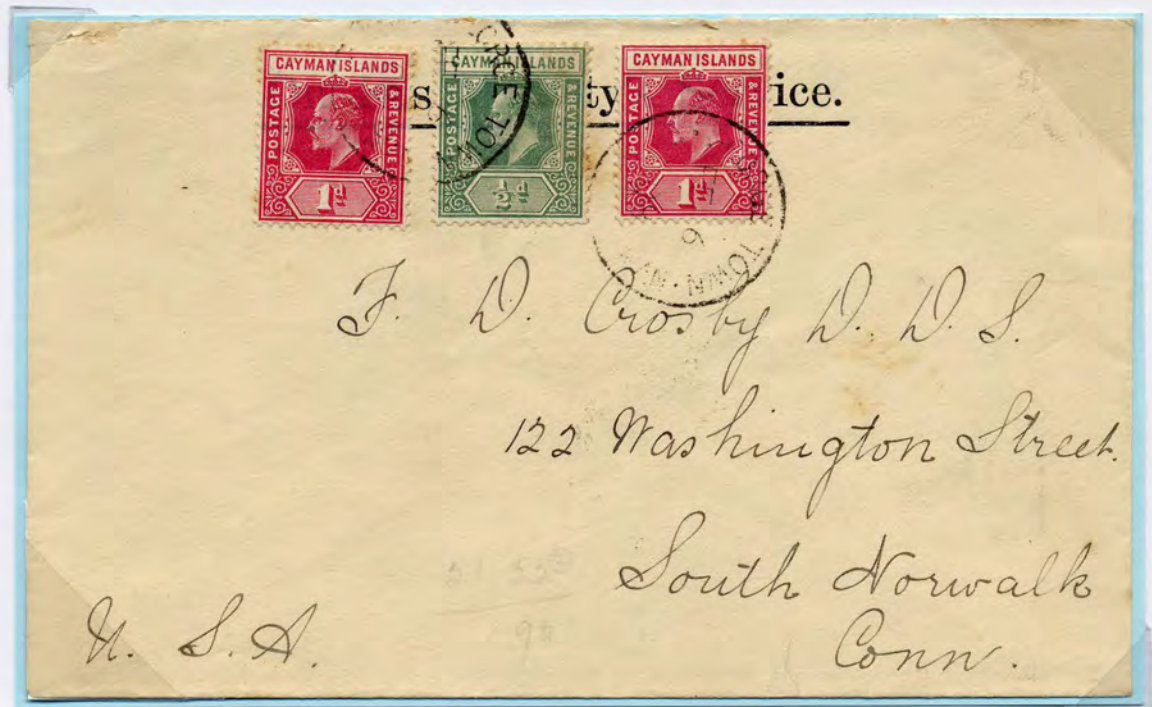


Pre Zenaida Mail

There were two mail sailings to Jamaica in the fortnight prior to the Zenaida sailing. Covers shown have Kingston Jamaica transits of February 4th and February 13th.



January 29th cover from Miss Parsons to Frank Brown. She was unable to fulfil his request for the previous surcharge provisionals and sent her own copies of $\frac{1}{2}^d$ and 1^d on 5s. February 6th cover to Connecticut USA.



Zenaida Mail

The steam yacht Zenaida called at Georgetown on February 11th 1908. They offered to convey mail the following day to Cuba. Covers are known either with ordinary stamps, or the 2½^d on 4^d surcharge on this mail. The surcharges are found either paying the postage or added in addition to the postage.



Cover on which 2½^d on 4^d has been added to already franked 3^d rated registered cover to England dated February 10th 1908. The surcharge was postmarked February 12th. The Zenaida sailed that day and arrived the following day on February 13th at Cienfuegos.

Village Post Offices

A post office probably opened at East End in 1901. Some time later the Boddentown office opened and closed in 1907. East End closed March 1st 1908 when the mail cart rural post service started.



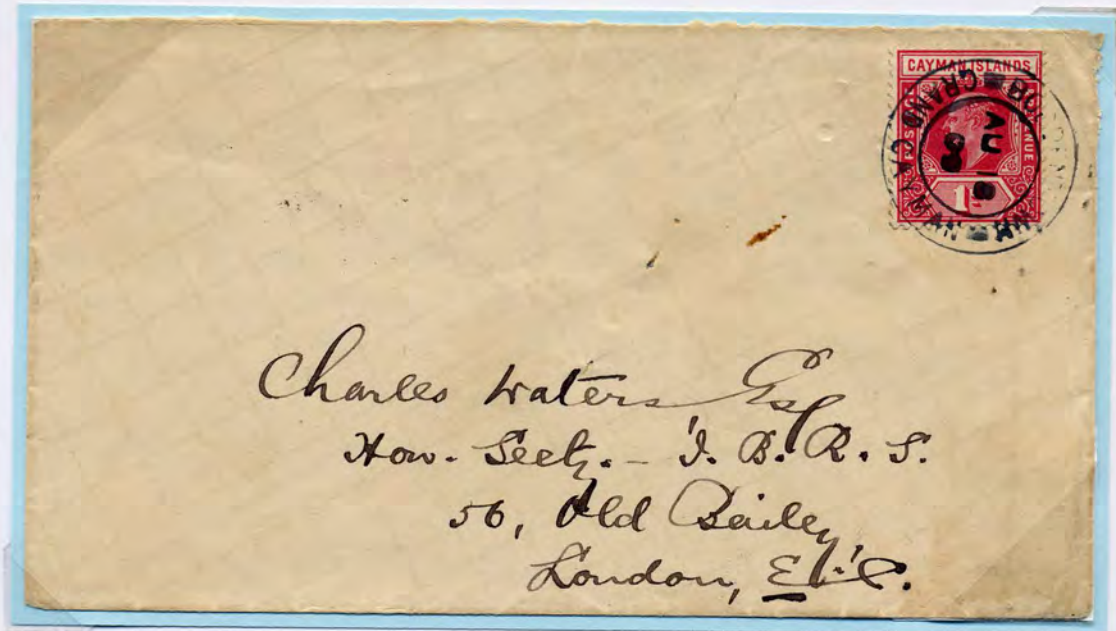
East End
1 cancel



Boddentown 1
Manuscript cancel

Boddentown
23 / 2
09

East End cancels are normally seen without a year date, though 02 is recorded on one stamp. Boddentown in manuscript can be seen in American or English style date.



Type II Boddentown cancel introduced 1909. Seen here on August 1909 cover at 1^d rate to England.

RURAL POST SERVICE

In early February 1908 Commissioner G.S.S. Hirst put forward a scheme to rejuvenate the failing local mail service.

He proposed to run a weekly mail service from Georgetown to Boddentown by waggon and from Boddentown to East End by horseback messenger.

He reduced postal rates. The waggoner and messenger would collect and deliver mail en route and sell stamps. The waggoner would carry freight.

In 1994 following our research and correspondance John Byl wrote the definitive article on Rural Posts in GSM. This was based on the 90+ recorded covers at that time. This together with my further research and articles is the basis of this study. Approx. 100 covers are now known less than 25% non philatelic.



Correct reduced 1/2d inland postage rate large Rural Post

EARLY RURAL POST OVERSEAS USE

The earliest recorded use of the large rural Post handstamp is December 1909. Prior to this date no markings have survived to indicate mail was carried by the Rural Post Service.

Three of the four earliest recorded covers are overseas to U.S.A. The practice of using the handstamp on overseas mail then stopped.



February 1910 cover to U.S.A. The last of the three covers overseas with this large Rural Post handstamp All are to the same commercial addressee. At correct 2.5d foreign letter rate.

E.K.D. 14.12.1909

L.K.D. 9.1.1914

LARGE RURAL POST HANDSTAMP

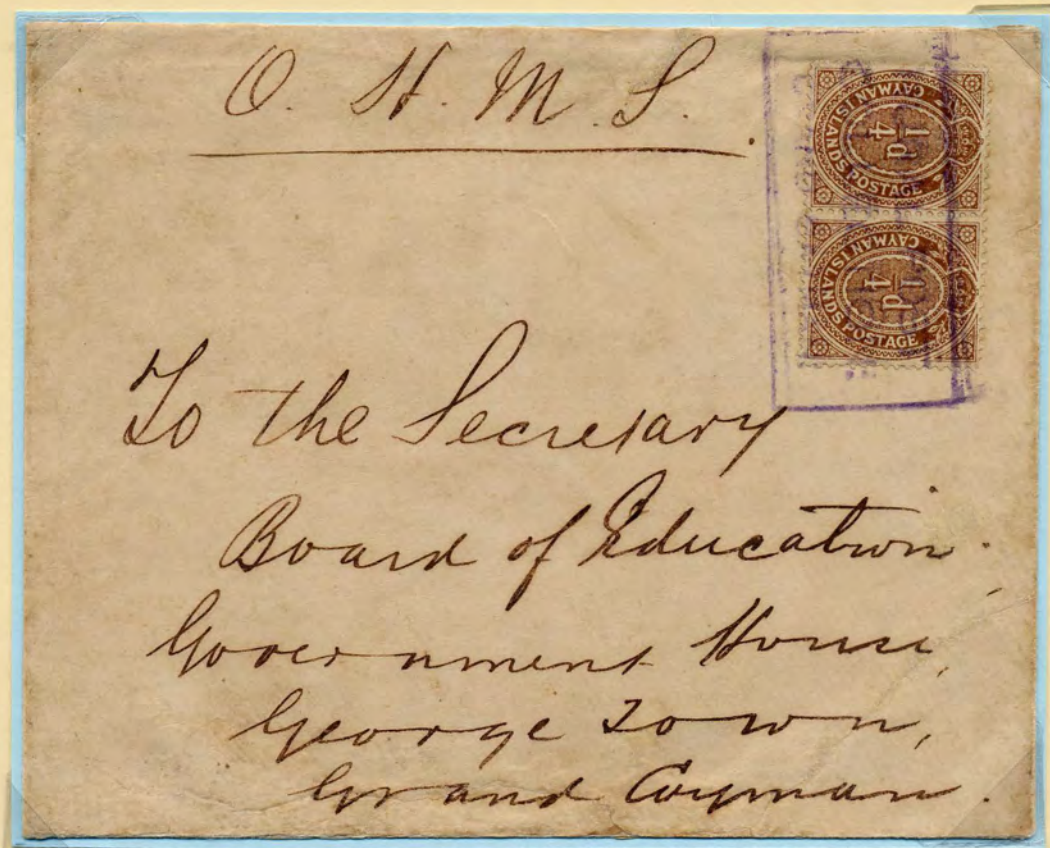
Mr Henry Bodden plyed the cart which carried mail and freight between Georgetown and Boddentown in 1909. He would have been supplied with the Large Rural Post handstamp and would have applied this to the mail he received.



Local cover at correct halfpenny rate bearing the large Rural Post handstamp applied by the mailcart driver, the waggoner.

RURAL POST OHMS LOCAL MAIL

In all we have so far recorded over thirty covers with this 51 x 24 mm handstamp. The minority of these as shown are correctly rated.

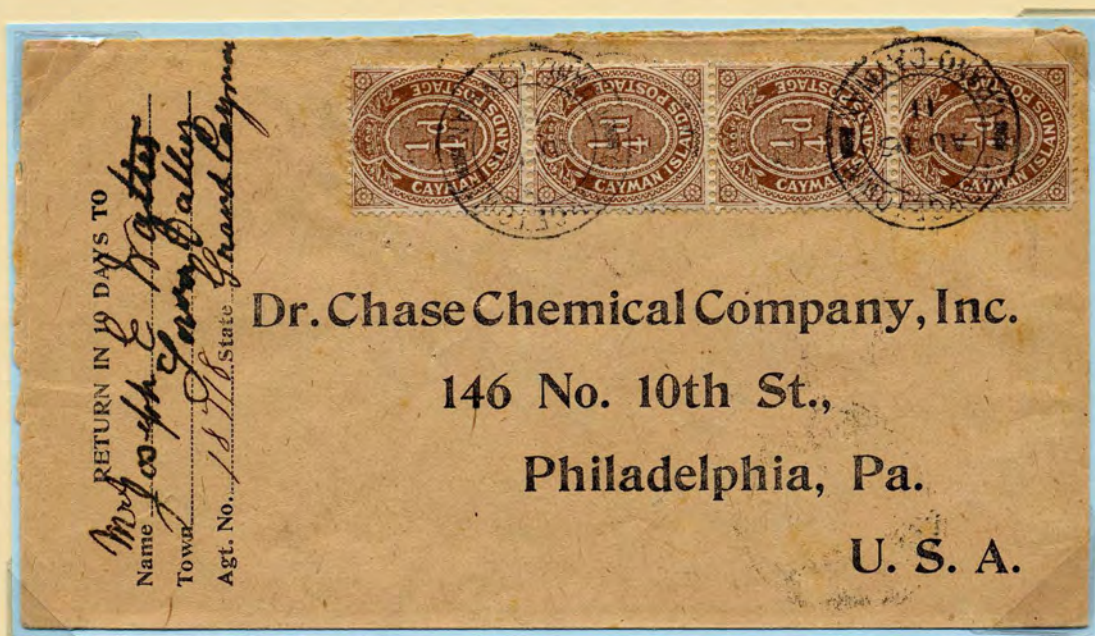


Local O.H.M.S. cover to Board of Education in August 1911 at the correct halfpenny inland letter rate.

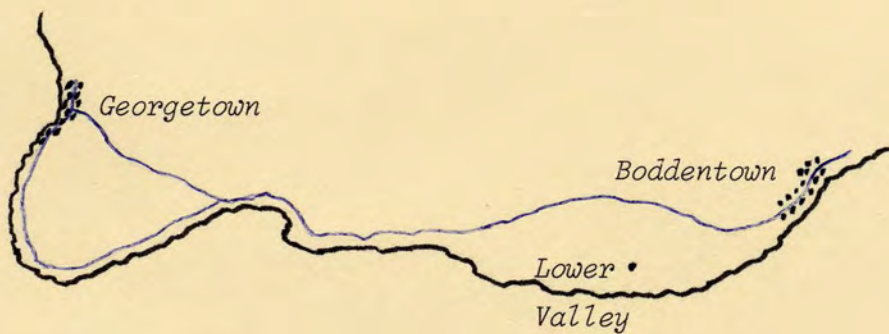
The Commissioner ordered farthing and halfpenny stamps to be supplied to the waggoner and messenger to sell en route.

RURAL POST EN ROUTE MAIL

On March 1st 1908 the Commissioner closed the Post Offices at Boddentown and East End. The waggoner was to sell stamps and collect letters en route.

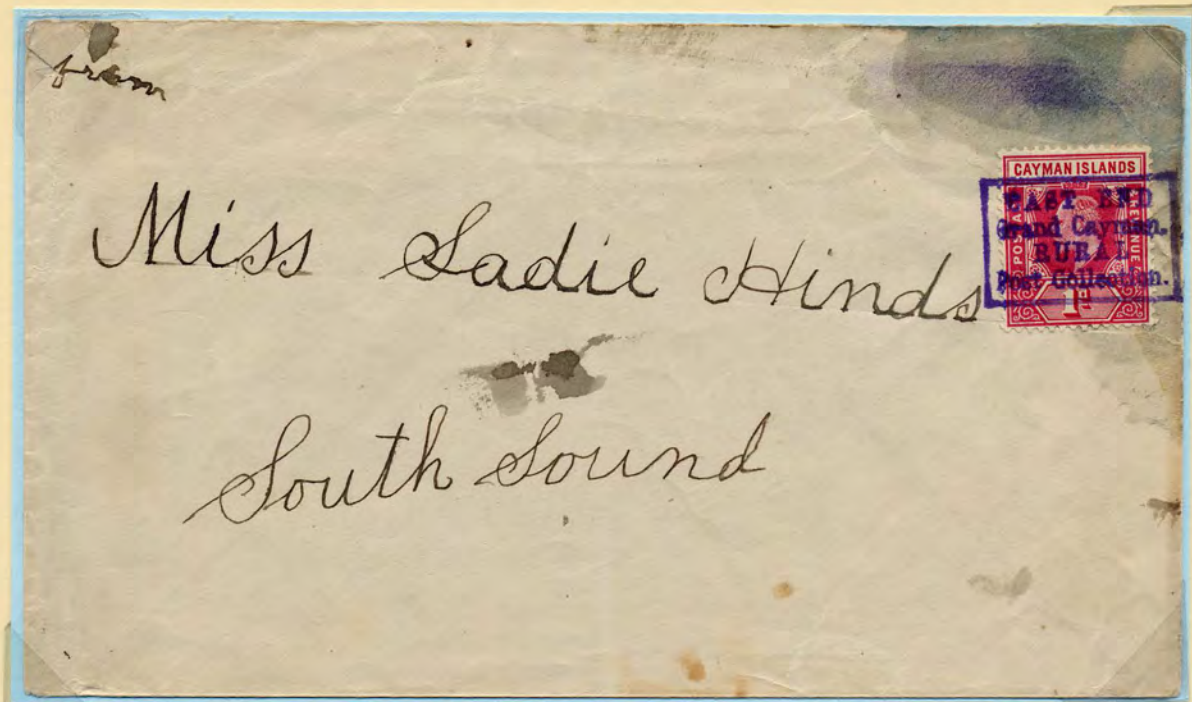


1911 Commercial cover to U.S.A. No Rural Post Cachet as destined overseas at this time. Cancelled on arrival at Georgetown. Cover had ten farthing stamps, four on front six on reverse poorly applied when the envelope was given to the waggoner at Lower Valley, some two miles en route from Boddentown to Georgetown.



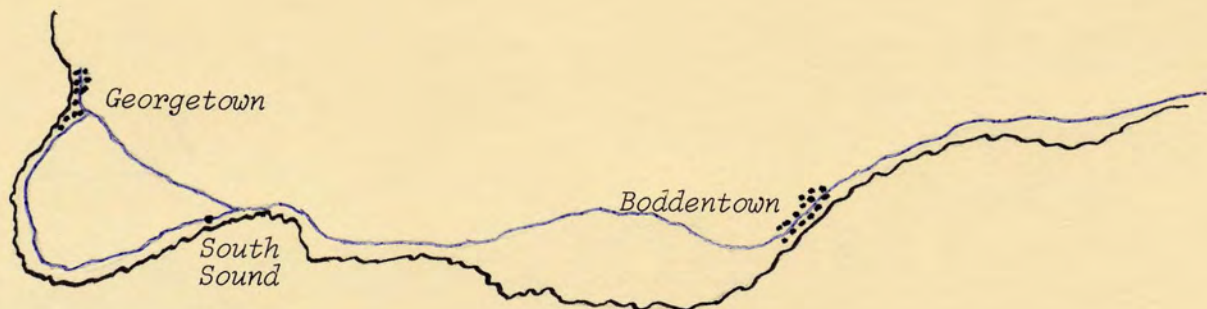
EAST END RURAL POST MAIL DELIVERED EN ROUTE

One of Commissioner Hirst's suggestions was to have no Post Offices and for the waggoner and messenger to deliver and collect letters en route.



One of two undated covers. Delivered by waggoner en route (only recorded example) on the old coastal road at the hamlet of South Sound off the normal route, after the bifurcation at Crewe Road.

The cover was sent from one young lady to another. She probably did not realise the inland postal rate had been reduced from one penny.



EAST END RURAL POST JAMAICA

Only a few covers are known to Jamaica with the East End Rural Post handstamp. The handstamp was probably applied by the police constable who was the rural postman.



East End Rural post cover 1^d rate to Jamaica transit cancels October 25th at Boddentown and Georgetown , Kingston arrival November 6th . ADVERTISED and UNCLAIMED returned transits Kingston January 1912 , Boddentown February 1912. The messenger having received the cover back endorsed the senders name and returned it to her at East End.

EAST END WITHOUT RURAL POST HANDSTAMP

Covers addressed overseas given to the rural post messenger would not normally receive the Rural Post handstamp. They would be cancelled at the next post office the mail arrived.



Stampless cover either by oversight or possibly starting as a ship letter was given to the Rural Post messenger. He did not apply the rural post handstamp as it was destined for overseas. It bears the same date transits of October 25th at Boddentown and Georgetown as the previous East End cover. They travelled together to Kingston, Jamaica date November 6th where they parted. It went on to England where it received 2d FB mark for postage due a tax T in circle mark has also been applied.

EAST END RURAL POST IN BLACK

Over some four weeks in July and August 1916, some eighteen months after the previous last use in violet, a very worn E.E.R.P. cachet is seen in black.



Only four covers appear to have survived at this time with black cachet. They are all addressed to E.N. McLaughlin, a school teacher and vestryman (local councillor) representing East End at the Georgetown Assembly.

EAST END RURAL POST IN BLACK

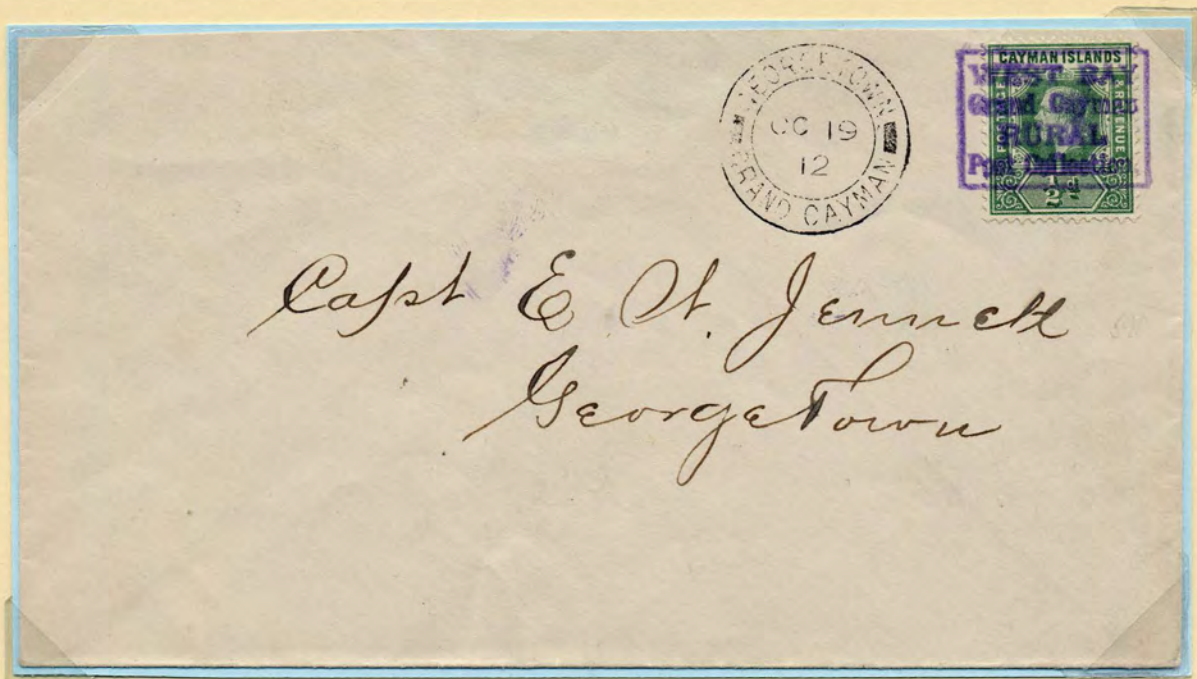
Covers are occasionally found with stamps placed on the reverse sealing the envelope as presumed extra security.



McLaughlin in addition to being a vestryman was also one of the law agents. This may explain why these covers survived containing legal or matters relevant to East End.

RURAL POST WEST BAY

In 1911 the Rural post Service was extended in the other direction north along the coast to West Bay.



October 1912 cover with halfpenny stamp bearing small rectangular 25 x 18 mm. West Bay Rural Post handstamp.

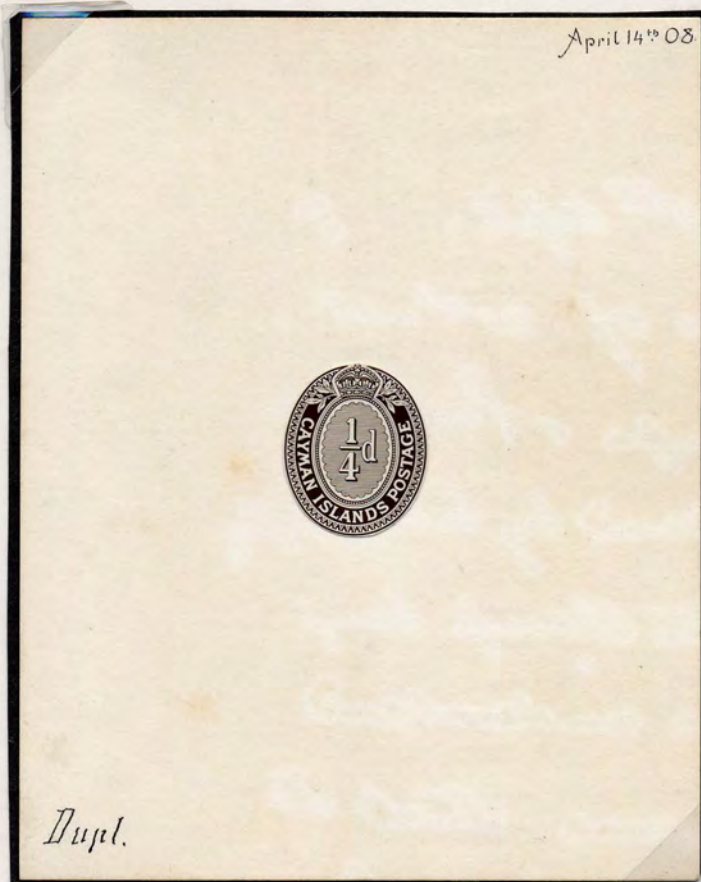
E.K.D. 9.12.1911

L.K.D. 18.1.1913

Approximately twenty West Bay rural Post covers have been recorded.

FARTHING CARD

- 3.2.1908 Letter from the Commissioner to the Governor of Jamaica with sketch.
- 27.2.1908 Scheme approved by him and forwarded to the Crown Agents.
- 24.3.1908 Crown Agents forward order to De La Rue



- 14.4.1908 Duplicate De La Rue proof forwarded for letterpress printing. The proof shows removal of corners from stamp to produce an oval design.
- 30.6.1908 Stamps and postcard issued.

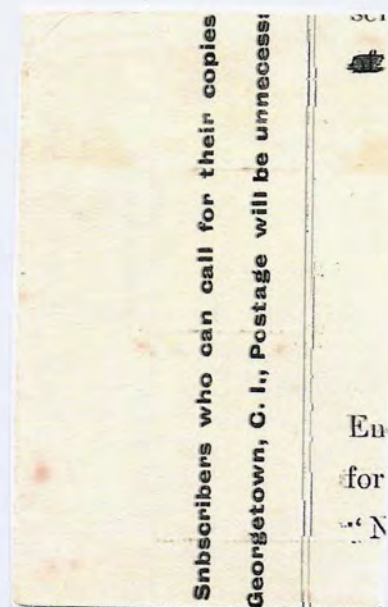
Single Farthing

Single farthing used on picture postcard of October 7th 1908 during the manuscript franking period. One of two similar cards sent that day; the other with MP3 *Paid* franking.



Single Farthing

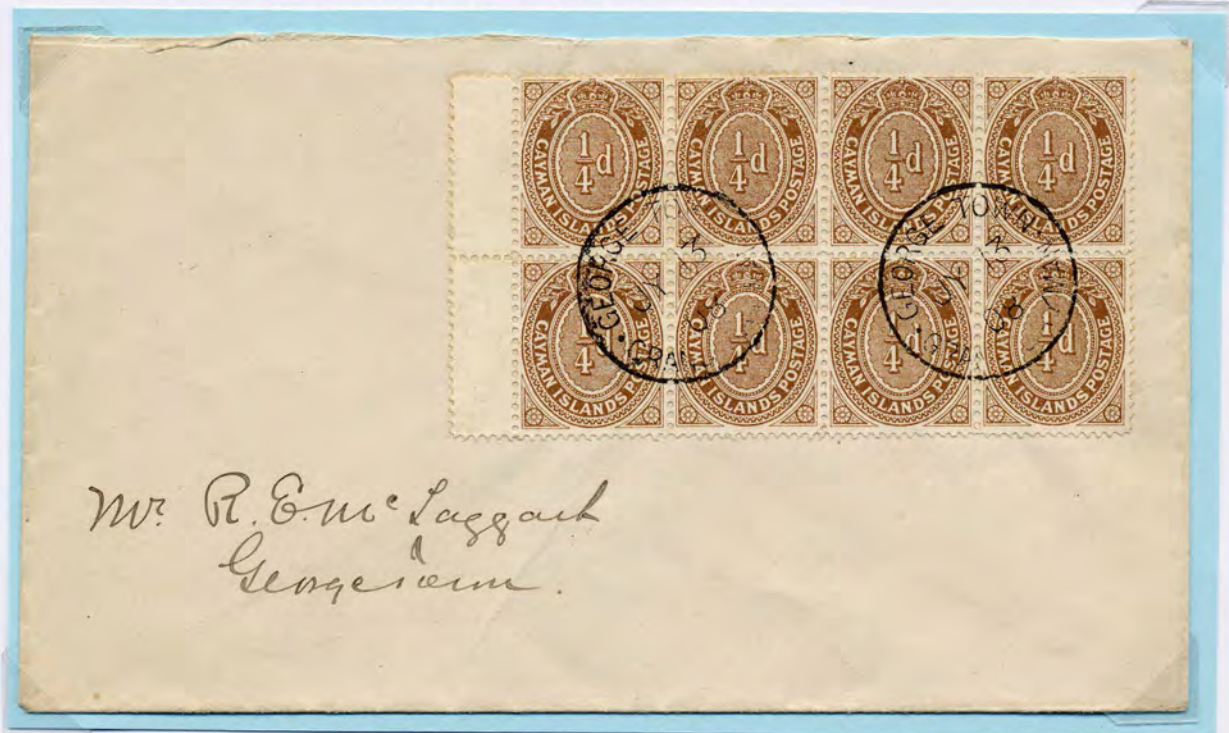
Single farthing printed matter rate on an unsealed letter used locally and on flyleaf advertising subscription for the local newspaper 'The Caymanian'.



1908 FARTHING

Local Use

The postal authorities refused to fulfil overseas orders for the farthing stamp. Stating in P.O. Notice No. 27. It was for local use only.



Local Farthing Mail

Boddentown and East End covers of 1910 and 1914 with pairs of farthing to pay local letter rate. Both with respective Type II cancellations.



1908 FARTHING

Overseas Use



PS 26/9/08.

Mr. H.A. Cresswell tells me that a relative of his has received a letter franked with four farthing stamps, so that they are now what the Irishman would call paying Internal Foreign

1908 Farthing

Overseas Use: The Last Few

Within a month of being allowed for overseas use the first printing was exhausted.



L/G.A.P. to
B.D.Foster
29/8/1908.

E

I'm sorry but you've come nearly too late for the
1/4d. stamps. There are only 12 left. These I'm
sending you.....
The 1/2 were sold off very quickly.



Multiple Farthing

18 Farthings making
up the registered foreign
letter rate of 4½^d.



J. A. Galbraith Esq
74 Ferry Street
Newark, New Jersey
U.S.A.

REGISTERED
10

23643
2366

AUG 10

Slot No 2796
P.M. 8/10



Multiple Farthing

24 Farthings making up the registered double foreign letter rate of $2\frac{1}{2}^d$ and $1\frac{1}{2}^d$ for the second $\frac{1}{2}$ oz of 1911 and



Multiple Farthing

12 and 10 Farthings making up the 3^d registered empire rate and 2½^d foreign letter rate of 2½^d respectively.

The registered front has two 6^d Edward values for the short lived 6^d per £12 insured letter rate which was discontinued when the steam ship service finished.



NO 16. 08
Kingston Jamaica Register
No 25 55.

R

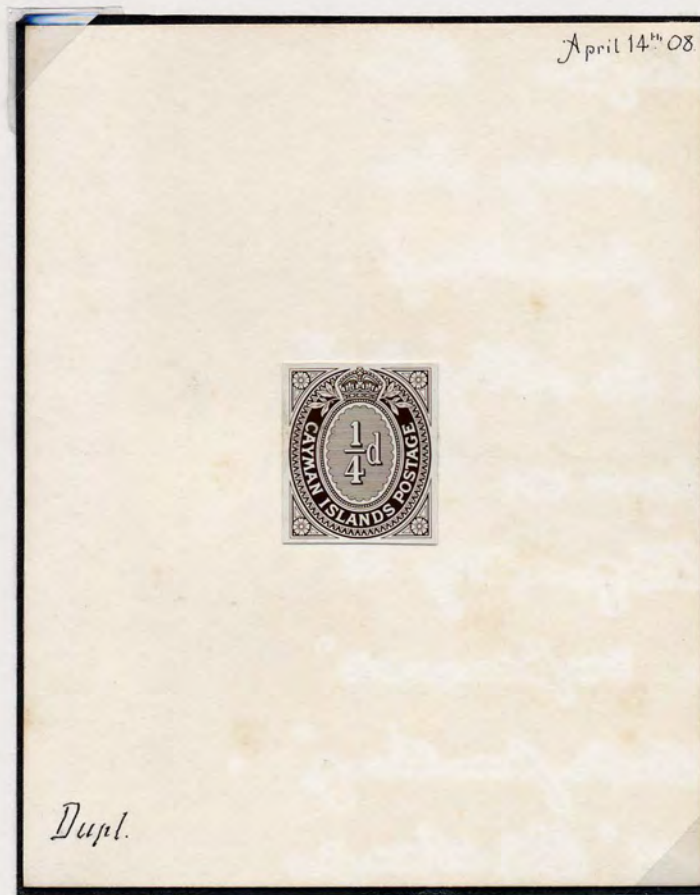


Mr. H. M. Henderson,
Co. Mobile Fish & Oyster Co.,
Mobile
Ala.:
U.S.A.



CAYMAN ISLANDS THE FIRST FARTHING

A study of the first farthing stamp and postal stationery card. From the De La Rue duplicate die proofs, specimens, varieties, printings and examples on card, cover and postal stationery card.



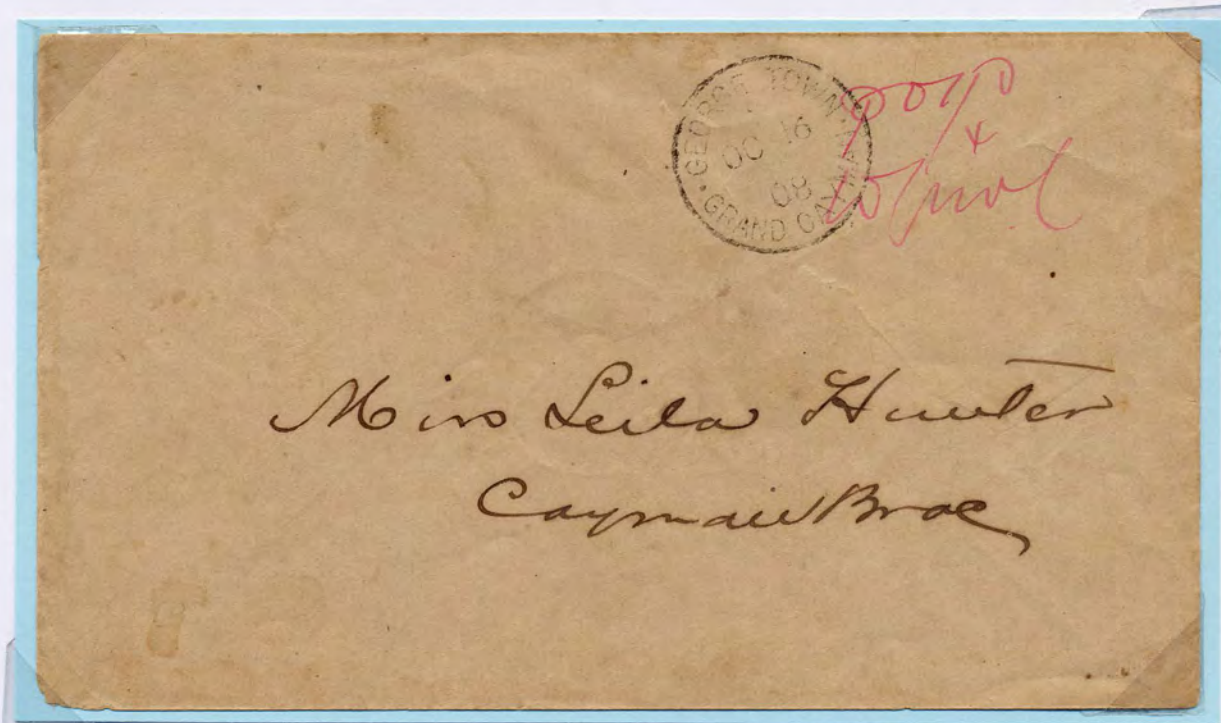
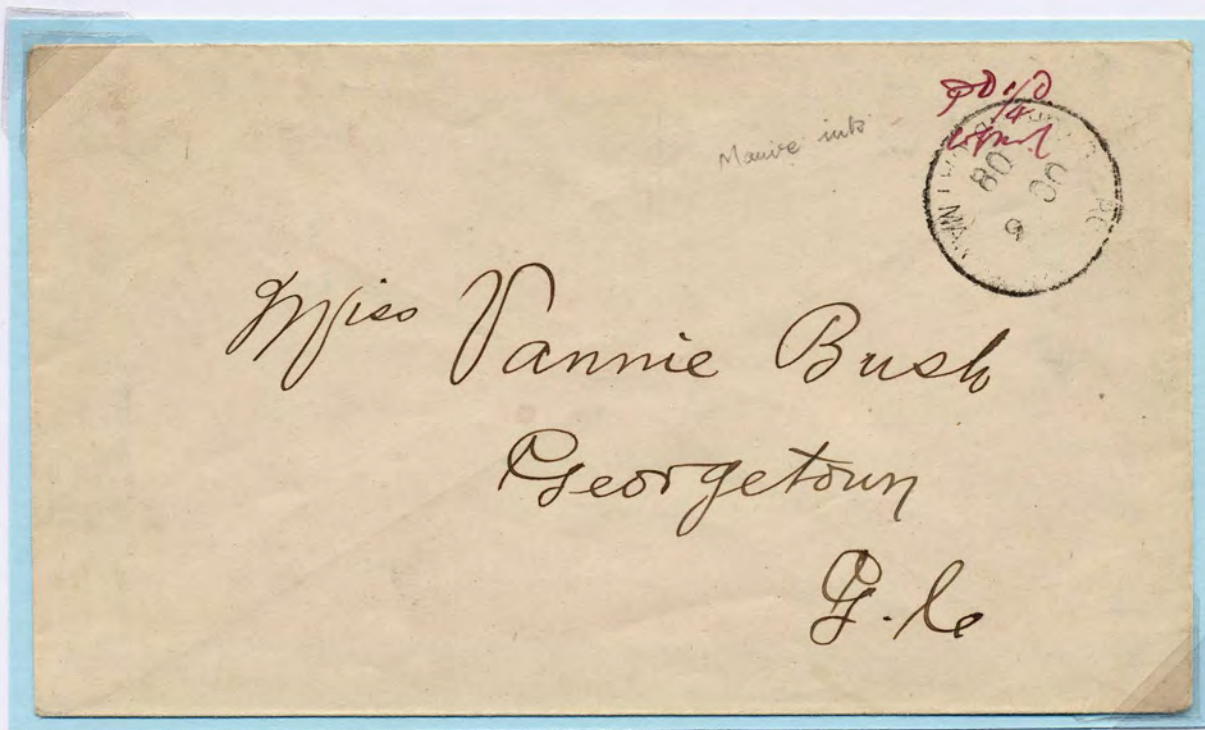
Duplicate proof ex. De La Rue archives.

The farthing was issued in response to the reduction in postal rates proposed by G.S.Hirst in his scheme to rejuvenate the local posts and set up a Rural Post Service.

MANUSCRIPT PROVISIONAL

Type IIb

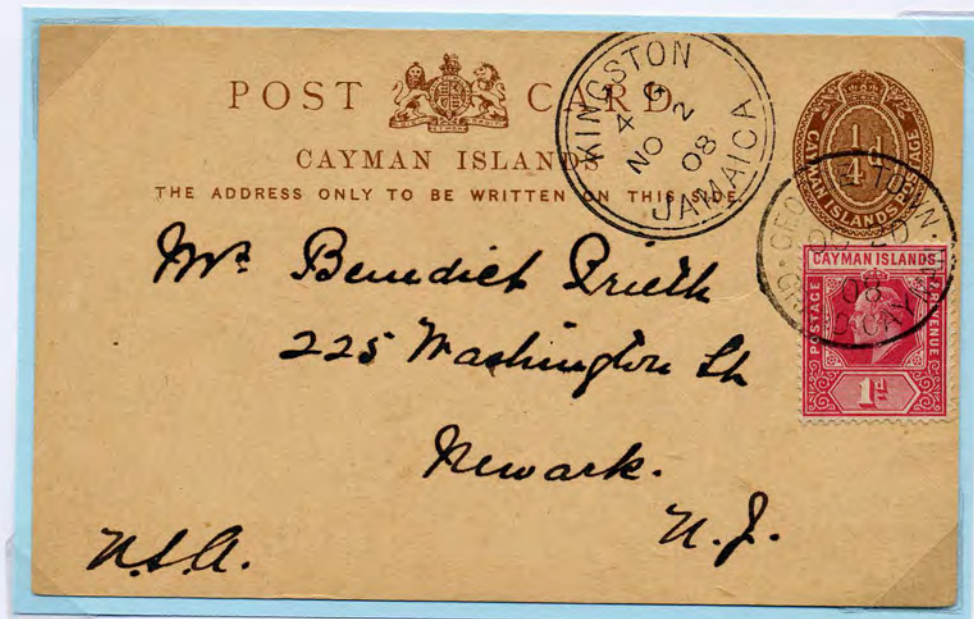
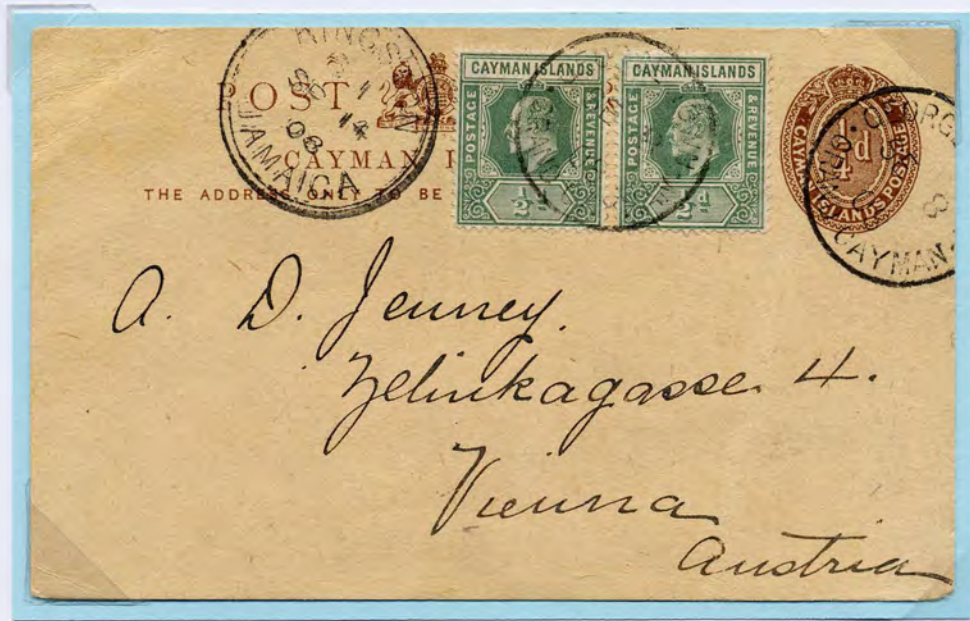
By early September 1908 the stock of the first printing of the farthing stamp was exhausted. During October 1908 cards or envelopes containing cards would be endorsed in manuscript by the postal officials.



1908 Farthing

Postal Stationary Card

Small format card used in the manuscript provisional period when no farthings available to make card up to 1^d rate. Therefore either ½^d or 1^d added to make up postcard rate.



1908 Farthing

Postal Stationary Card

Local use of large Type II card within Georgetown in 1911 and 1912.



HALFPENNY WRAPPER

ESSAY

*Duplicate die proof from De La Rue records in green.
The edges of the figure and value have been touched
up with Chinese White by hand.*

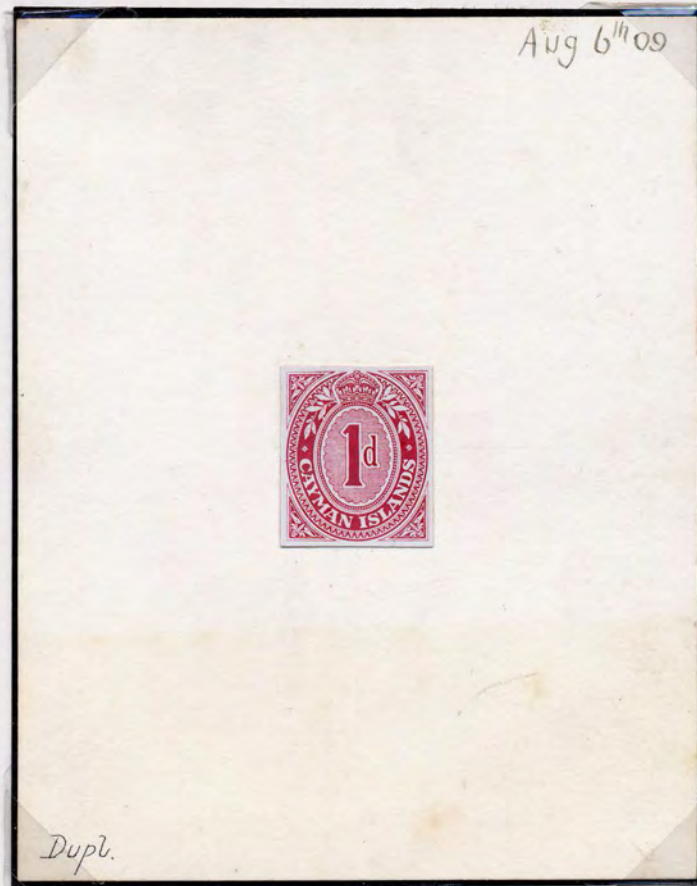


On glazed card affixed to thick card 90 x 115mm.

Dated March 5th 1909 in manuscript.

ONE PENNY CARD/ENVELOPE

Duplicate die proof in dull carmine from De La Rue records on glazed card affixed to thick card 90 x 115mm. Dated August 9th 1909 in manuscript.

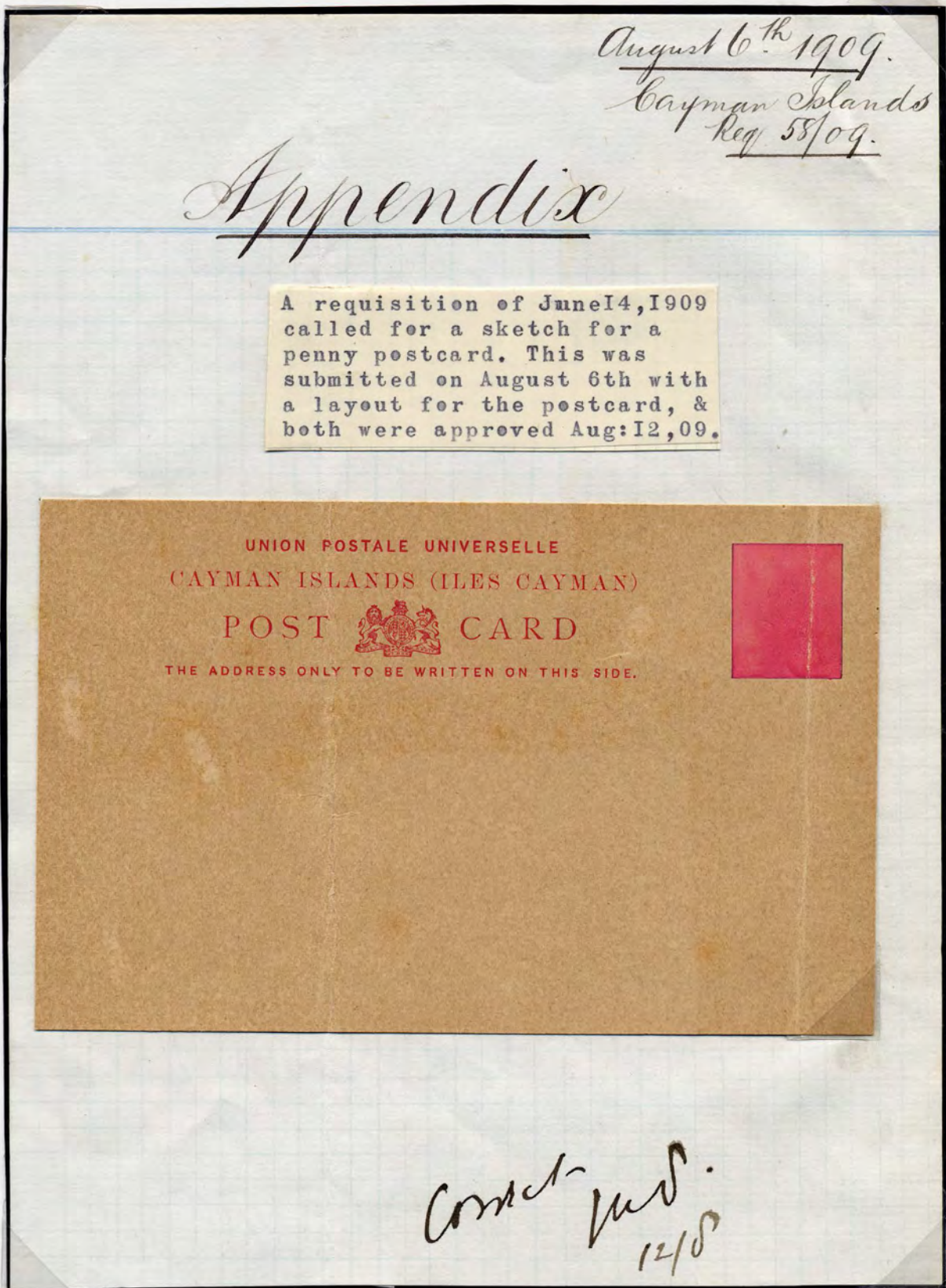


Working die proof of stamp design in black.
Surface printed on thin card. 36 x 60mm.



ONE PENNY CARD

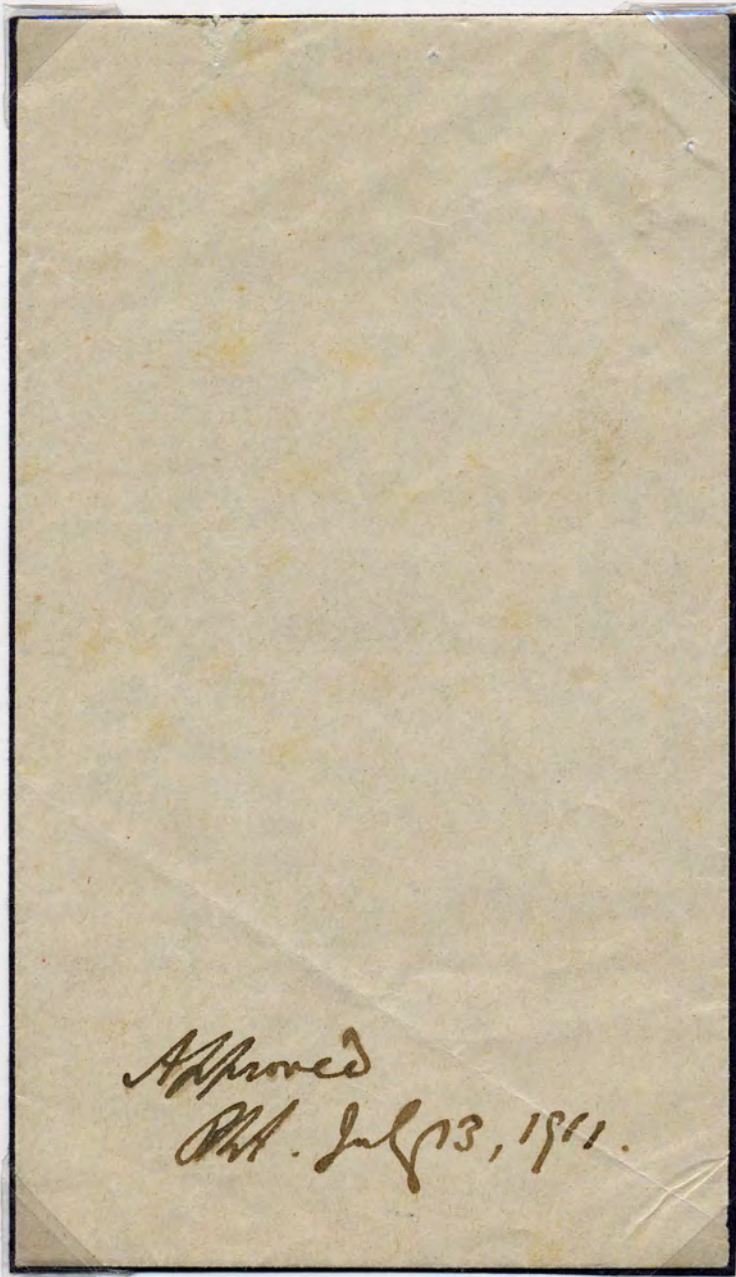
ESSAY of postcard on Appendix piece.



From De La Rue archives dated August 6th 1909. Requisition No 58/09. Printed postcard with value tablet in red wash. Manuscript correct.

TWO and HALFPENNY ENVELOPE

Proof



Gummed envelope with similar endorsed approval Size 165 x 94mm.

Die proof

In blue on glazed card affixed to thick sunken card. 85 x 90mm.



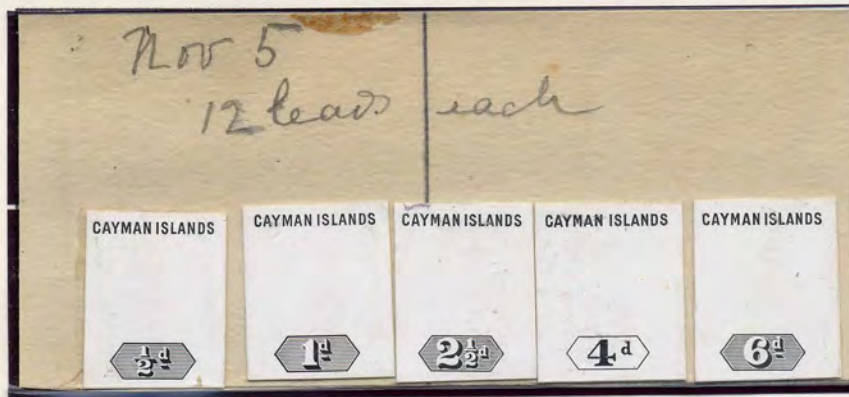
Signed. Approved. Dated July 13 1911



1912 SERIES: DIE PROOF DUTY PLATES, MADE WHEN THE PLATES WERE CONSTRUCTED

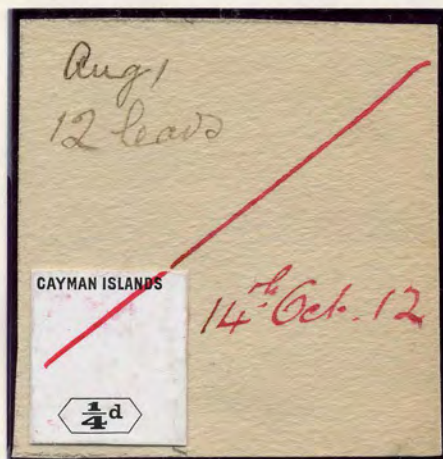
These die proofs were made when the duty plates or added panes were electrotyped from moulds of 12 leads on the dates inscribed on the proofs. Red markings and dates record invoices issued for the plates.

Die Proof Duty Plates: 1912 Series replaced values
(A 10 by 6 pane was added to each of these duty plates. De La Rue Archives)

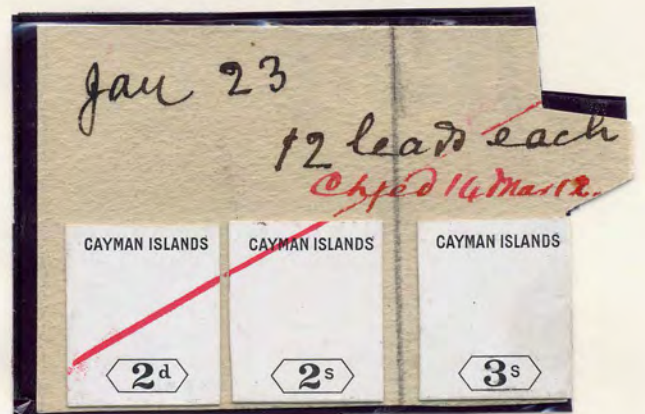


Die Proof New Duty Plates: 1912 Series
(L and R panes, each 10 by 6, De La Rue Archives)

Replaced the 1908 Farthing



The new values



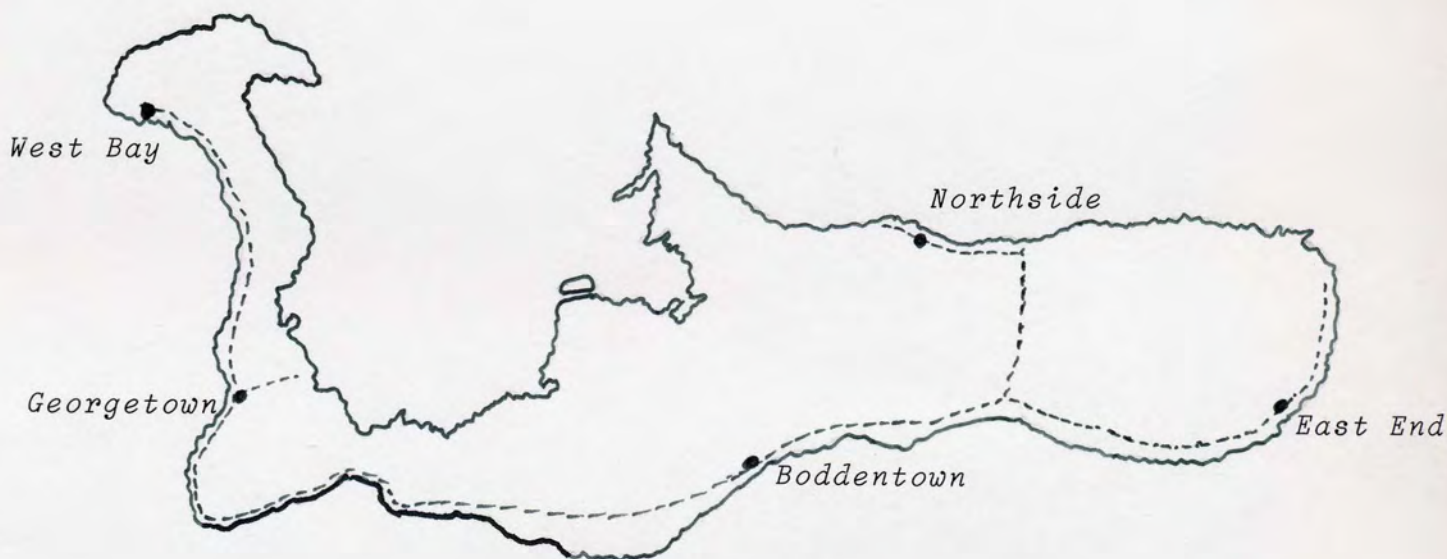
Local mail East End pop. 500

This village post office which closed in March 1908 through lack of business reopened in September 1913 and a new canceller was issued.



East End Post Office cds which is always indistinct on cover at new reduced $\frac{1}{2}$ ^d rate
EKD 10-9-13 LKD 5-8-16.

Approx. 30 East End Post Office covers are recorded.



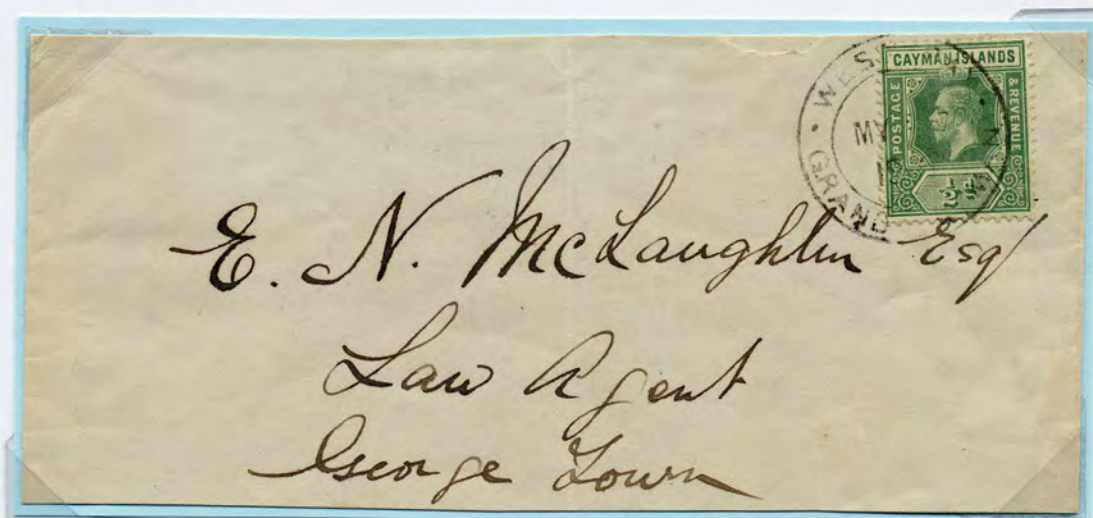
West Bay

A post office opened in Hubert Lee Ebanks's shop in West Bay around February 1913. He was the first sub postmaster. The Type I West Bay post mark is first seen in purple in July 1913.



Local cover at $\frac{1}{2}^d$ local letter rate with purple West Bay cancellation.

The purple, later changed to black.



East End Post Office

The East End Post Office reopened after February 1913 at William Conwell Watler's store at Gun Bay. The East End Type II handstamp was first seen in September 1913.



George V Penny Rate

A first day cover of February 25th 1913 and a Schooner Mail cover of 1915: both at the 1^d rate are shown.



Capt. E. H. Foster
Schrs. M. H. Goennell
c/o Messrs. Fred L. Myers & Son