

**CAYMAN ISLANDS – QUEEN VICTORIA:**

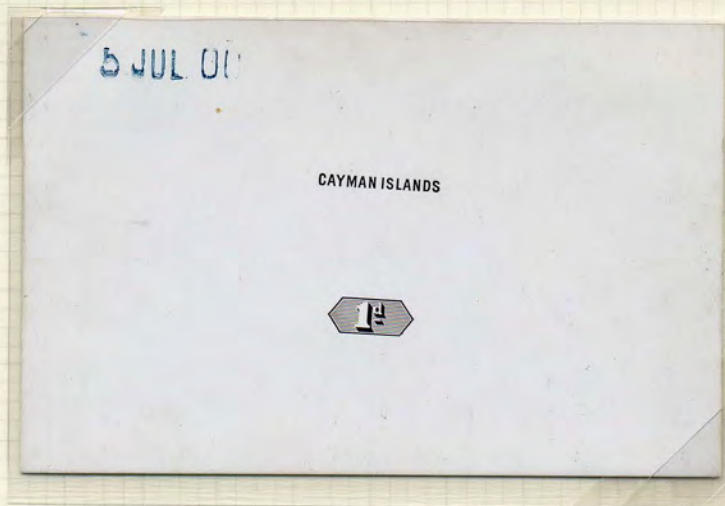
**DIE PROOFS.**



Master Key-Plate Die Proof.

This example with blank country name and value tablet. This proof was annotated at the time that a request was made for three additional values, 2½d, 6d and 1/-, to accompany the already issued ½d and 1d. Due to the death of Queen Victoria before these values were approved, the decision was made to wait for the new King Edward VII design for these three values. **A Unique proof.**

Ex Sacher, Green, Maisel.



1900 1d Name and Duty Plate Die Proof.

Dated 5 Jul 00

Ex Lloyd-Lowles, Byl, Cooley, Maisel.

## CAYMAN ISLANDS – THE ‘KEY-PLATE’ PERIOD.

### QUEEN VICTORIA.

The Cayman Islands sought, and received, approval from the ‘Jamaican Assembly’ and ‘The Justices and Vestry’, of the Cayman Islands, to issue their own postage stamps.  
The duty plate was approved on 23 May 1900. The Secretary of State gave his approval and the general colonial key plate was used.

A requisition was submitted by the Crown Agents to Thomas De La Rue & Company, on requisition number 36/00 of 7 August 1900. A further requisition, 36/01, was made on 30 May 1901.

The Queen Victoria issue, for the Cayman Islands, was the last printing by De La Rue from the old ‘Postage-Postage’ key plate.



The two values are Wmk Crown CA, comb perforated 14, using typography and printed from Plate 3.



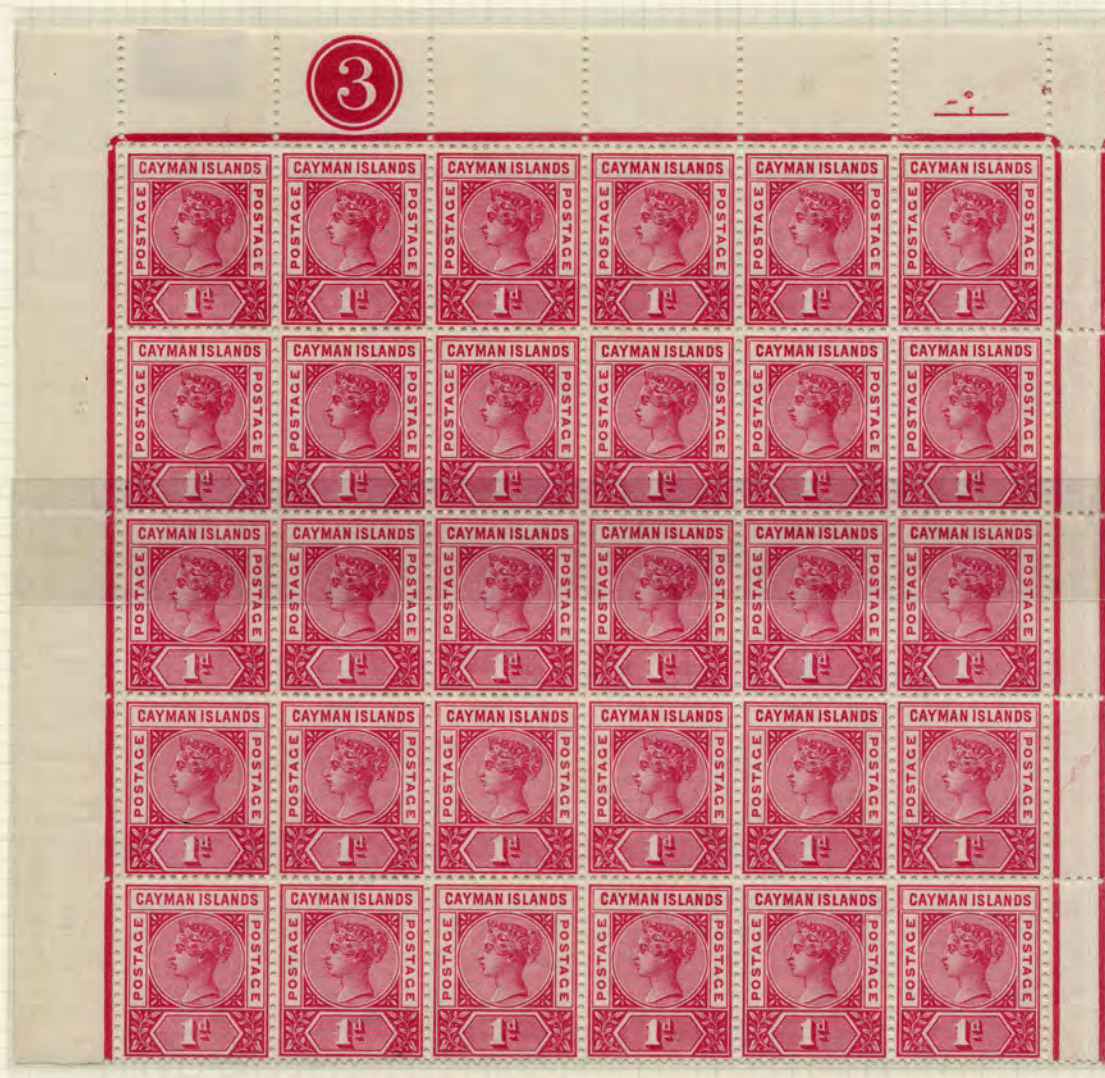
1/2d Pale green

The stamps were dispatched on the S.S. Elbe, being received in Georgetown on 20 November 1900.

Quantities Printed:- 1/2d 96960 & 750 overprinted ‘SPECIMEN’  
1d 97920 & 750 overprinted ‘SPECIMEN’

CAYMAN ISLANDS – THE ‘KEY-PLATE’ PERIOD.

QUEEN VICTORIA.



1d Pale carmine.

## CAYMAN ISLANDS – THE ‘KEY-PLATE’ PERIOD.

### KING EDWARD VII.

Almost as soon as the Queen Victoria issue arrived, demand for higher values and the death of the Queen, prompted the need for a new issue.

The 2½d, 6d and 1/- values of the first King Edward VII series were ordered from De La Rue, on requisition number 51/01 of 23 December 1901, with the ½d being ordered on requisition number 62/02 of 18 July 1902 and the 1d on requisition number 133/02 of 16 January 1903. The 2½d, 6d and 1/-, were the first stamps to be printed from the new Colonial ‘Postage-Postage’ key plate.



Die Proof for the 6d, dated 7 OCT. 01

Ex Marston.



6d from requisition 51/01, 23 December 1901.

# CAYMAN ISLANDS – THE ‘KEY-PLATE’ PERIOD.

## KING EDWARD VII.

### The ‘Glover Flaw’.

The ‘Glover Flaw’ is a downward bulge on the name tablet frame, below the first ‘A’ of ‘CAYMAN’.  
It occurs on all the values printed from the King Edward VII ‘POSTAGE-POSTAGE’ key plate for the Cayman Islands. It also occurs on all values printed from this key plate, for the Gambia and Seychelles.

The downward bulge formed sometime after the printing of the two Queen Victoria key plate values for St. Helena, as no example exists for the two St. Helena values.

It appears on the last stamp, No. 6, in the first row of the left hand pane.



Enlarged Detail.



2½d bright Blue, showing the position of the ‘Glover Flaw’ (L1/6).

### 1902-1903 series.



309 Possible

256 Possible

69 Possible

66 Possible

49 Possible

### Variety of ‘Glover Flaw’ on the 1d Carmine.



The left hand stamp, above, shows the normal dent, whilst the right hand stamp shows an abbreviated dent.

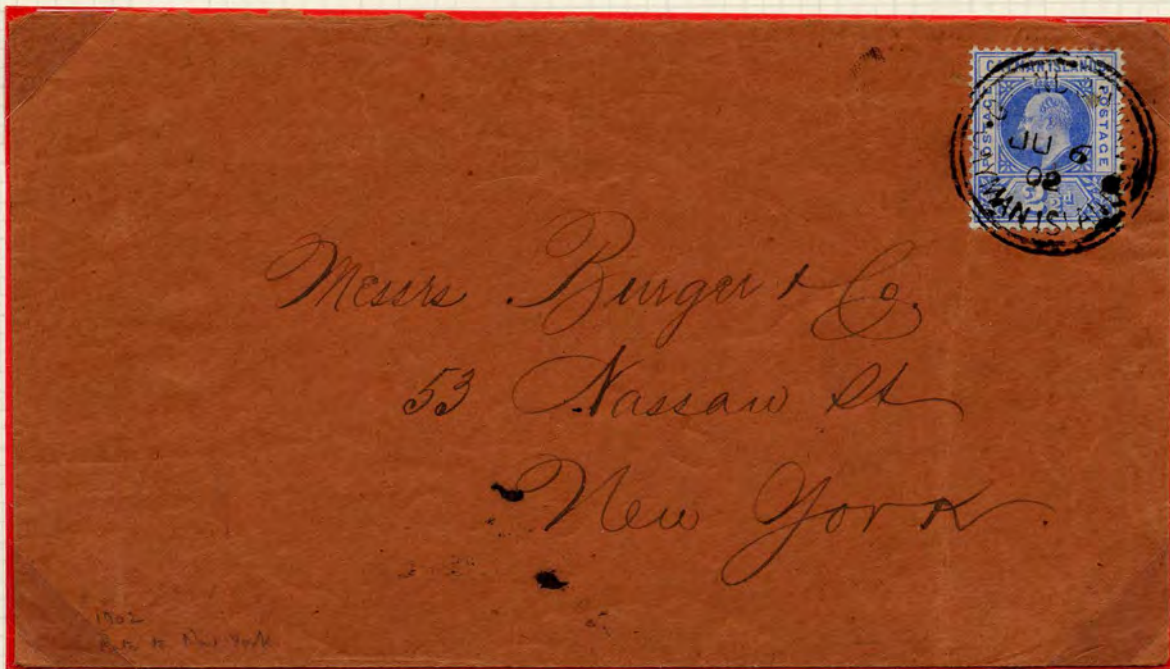
CAYMAN ISLANDS – THE ‘KEY-PLATE’ PERIOD.

KING EDWARD VII.

1902 – 1903 Series.



‘Glover Flaw’s.



2½d bright blue on cover, cancelled Georgetown type 3a dated JU 6 02, to the USA, paying the correct non-empire rate for ½ ounce.

## CAYMAN ISLANDS – THE ‘KEY-PLATE’ PERIOD.

### KING EDWARD VII.

Second Series.

The ½d, 2½d, 6d and 1/- were ordered, from De La Rue, on requisition number 74/04 of 20 September 1904. The 1d was ordered on requisition number 60/05 dated 22 August 1905.

The five values are Wmk Crown MCA, perf 14, using typography and are printed from Plate 1.



½d Green.

1d Carmine.

2½d Bright blue.

6d Brown.

1/- Orange.



Quantities Printed:-	½d	30960.
	1d	24480 (of which 4800 were used for surcharging in 1907).
	2½d	29280.
	6d	8880.
	1/-	8880.

No stamps of this issue were overprinted as ‘specimens’.

# CAYMAN ISLANDS – THE ‘KEY-PLATE’ PERIOD.

## KING EDWARD VII.

Second Series.



The ‘Glover Flaw’.

1904 – 1907 series.



258 Possible



164 Possible



244 Possible



74 Possible



74 Possible



## CAYMAN ISLANDS – THE ‘KEY-PLATE’ PERIOD.

### KING EDWARD VII.

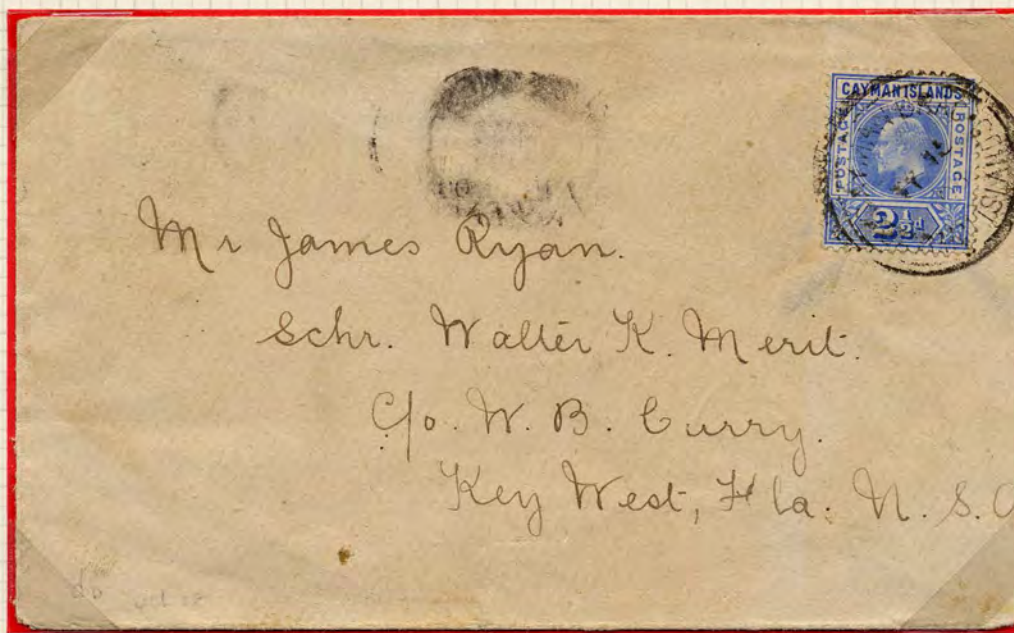
1904 – 1907 Series.

Between 29<sup>th</sup> September 1906 and 30<sup>th</sup> October 1906 a different canceller was in use, the type 3b. This cancel is identified as having a thin ‘inner ring’.



The 1d Carmine with year ‘07’ inserted by hand.

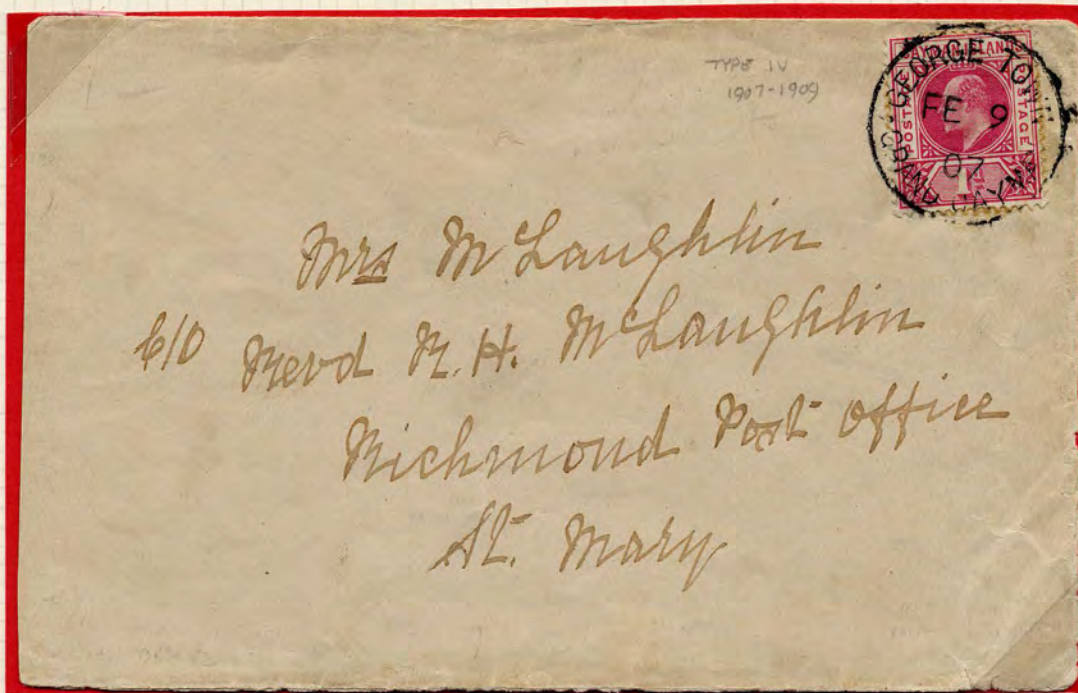
### SCHOONER MAIL.



2½d bright blue, cancelled Cayman Brac type 2 dated MY 15 08, to the USA, paying the correct non-empire rate for ½ ounce.

**CAYMAN ISLANDS – THE KEY-PLATE PERIOD:**

**KING EDWARD VII.**



1d carmine, cancelled George Town type 4 dated FE 9 07, to St. Mary, Jamaica, paying the correct Internal rate for 2 ounces.  
Ex Lloyd-Lowles, Maisel.



1d carmine x 4, cancelled George Town type 4 dated MY 9 08, to England, paying the 2d registration fee and correct Empire rate for 2 ounces.  
Ex Edmonson, Prappas, Maisel.

**CAYMAN ISLANDS – KING EDWARD VII:  
DIE PROOF & COLOUR TRIALS.**



1907 5/- Name and Duty Plate Die Proof.

Dated 26 Nov 06

Ex Lloyd-Lowles, Maisel.



1/- Brown & Blue: The issued colours of the 4d.

Ex Rew, Marston.



1/- Violet & Green: The issued colours.

Ex Danson, Marston.

# CAYMAN ISLANDS – THE ‘KEY-PLATE’ PERIOD.

## KING EDWARD VII.

Third Series.



The four values are Wmk Multi-Crown CA, perf 14, using typography and are printed from Plate 1.



4d Brown and blue.



6d Olive & rose.

# CAYMAN ISLANDS – THE ‘KEY-PLATE’ PERIOD.

## KING EDWARD VII.

Third Series.



1/- Violet and green.

5/- Salmon and green.

The 5/- block, above, is one of two recorded plate number blocks.  
It is the only plate number block recorded with two margins.

Quantities Printed:-	4d	6240 & 732 overprinted 'SPECIMEN'
	6d	5040 & 732 overprinted 'SPECIMEN'
	1/-	4800 & 732 overprinted 'SPECIMEN'
	5/-	6240 & 732 overprinted 'SPECIMEN'

480 stamps of the 4d value were surcharged on 12 February 1908.  
3690 stamps of the 5/- value were surcharged in November 1907.

The 'Glover Flaw'.

1907 Series.



48 Possible

42 Possible

40 Possible

19 Possible

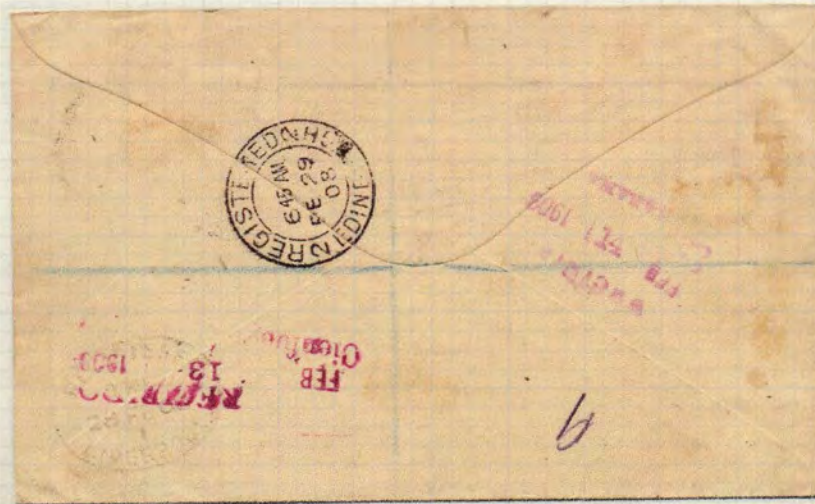
## CAYMAN ISLANDS – THE KEY-PLATE PERIOD:

### KING EDWARD VII.

OHMS cover with type 4 cancel, dated FE 11 08.

Although philatelic in nature, this is an important cover in relation to the issue of the 2½d on 4d surcharge provisional. This cover is dated one day before the provisional was issued and shows that ½d and 1d values were available.

What makes this cover unusual, is that it went to Cuba on the Zenaida along with mail franked with the 2 ½d surcharge provisional.



Reverse showing Cuba transit cancels for Cienfuegos and Habana, Liverpool and Edingburgh receiver dated FE 29 08.

## CAYMAN ISLANDS – KING EDWARD VII:

### THE SURCHARGE PROVISIONALS.

In May 1907 it was discovered that due to substantial orders from abroad, the stock of ½d stamps had been reduced to 17 sheets (2040 stamps). This was estimated to be adequate for two months. As no supply was due, and none possible in such a short time, the decision was taken to resort to surcharging. 4800 stamps (40 sheets) of the 1905 1d carmine were surcharged 'One Halfpenny' at the Government Printing Office, Kingston, Jamaica.

The stamps were issued on 30 August 1907, for sale only over the counter.



The strip of three, above shows the surcharge misplaced during printing. The middle stamp of this strip shows the 'full stop' missing, ie on the next stamp.



The stamp, above, shows the surcharge dramatically misplaced, so that the full stop is now in the frame line at the left side of the stamp.



The two examples, above, show the constant flaw 'dot in H'. This is found on stamp 54 of the surcharge setting (L9/6 and R9/6)

## CAYMAN ISLANDS – KING EDWARD VII:

### THE SURCHARGE PROVISIONALS.

#### The 'Glover Flaw'.

The 'Glover Flaw' is a downward bulge on the name tablet frame, below the first 'A' of 'CAYMAN'. It occurs on all the values printed from the King Edward VII 'POSTAGE-POSTAGE' key plate for the Cayman Islands. It also occurs on all values printed from this key plate, for the Gambia and Seychelles, although not for stamps printed for St. Helena, as the flaw did not develop until after the two St. Helena values were printed on 9<sup>th</sup> January 1902. Article published in the 'London Philatelist' (Volume 109, Number 1276, Pages 143 – 150 & 155 – 159) by the exhibitor and Dr. R. Maisel.

It appears on the last stamp, No. 6, in the first row of the left hand pane.



40 Possible



The block, above, is one of the largest recorded multiples. It shows the constant variety 'dot in H' (stamp 54), which occurs on both panes.



**CAYMAN ISLANDS – KING EDWARD VII:  
THE SURCHARGE PROVISIONALS.**



The strip of three, above, shows the surcharge misplaced during printing.  
All three stamps show the 'full stop' missing, ie on the next stamp.

The 'Glover Flaw'.

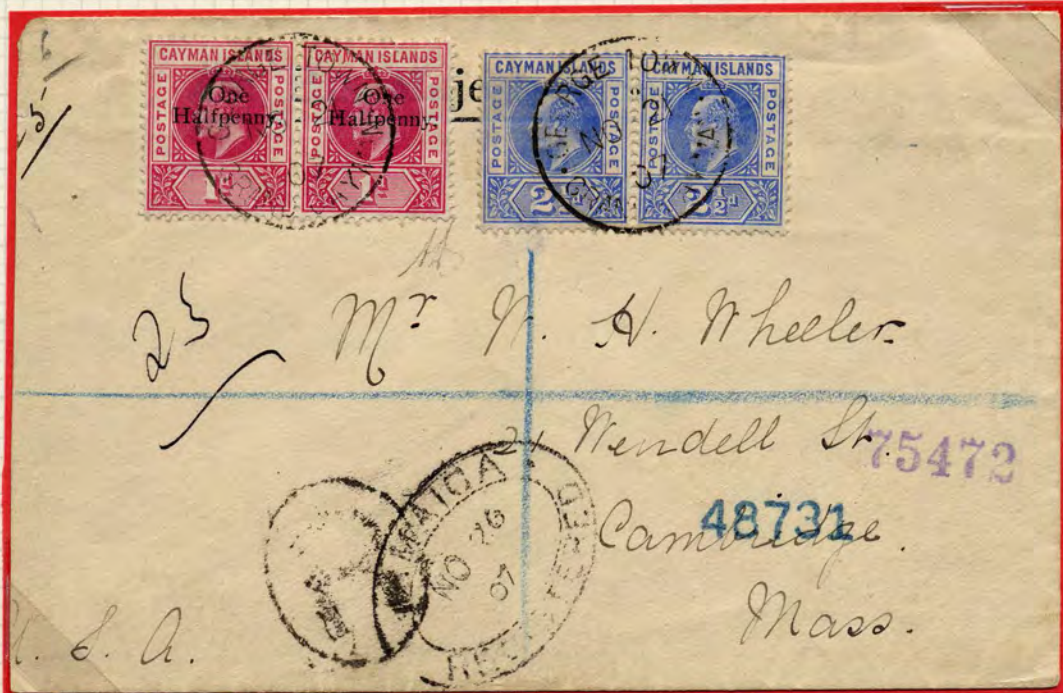


40 Possible



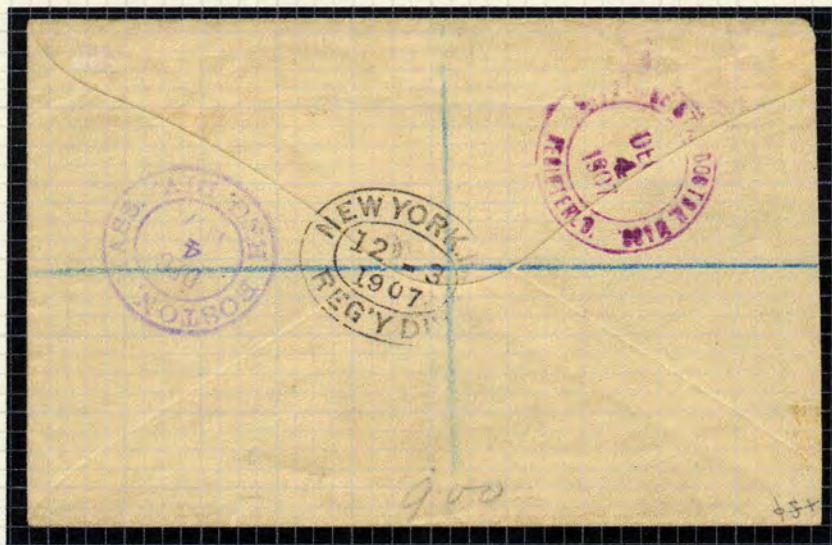
The stamp, above, although not a revenue stamp, was fiscally used in 1907

**CAYMAN ISLANDS – KING EDWARD VII:  
THE SURCHARGE PROVISIONALS.**



Cover from GEORGE TOWN GRAND CAYMAN, with type 4 cancel dated NO 21 07 and type R1 registration mark. Jamaica Registered transit cancel dated NO 26 07. Reverse shows transit cancels New York Registered dated 12 -- 3 1907, Boston Reg. Div. dated DEC 4 1907 and a further Boston Registered dated DEC 4 1907.

The 'One Halfpenny' on 1d pair and 2½ pair pay the 2d registration fee and 2½ letter rate for ½ ounce, with 1½d excess payment.



There are believed to be 15 covers in existence bearing this provisional.  
Cover ex A.J. Watkin and 'Ambassador'.

## CAYMAN ISLANDS – KING EDWARD VII:

### THE SURCHARGE PROVISIONALS.

Towards the end of 1907, it was realised that stocks of some values would run out, due to the Commissioner George S.S. Hirst's refusal to release low value stamps that he had withdrawn. At the end of November 1907, both the ½d and 1d stamps of the current issue ran out, almost simultaneously. On the 22 November, 2160 of the 1907 5/- salmon & green were made ready: 1800 were surcharged

1D: These lasted until 9 December, when a further 360 stamps were surcharged.

At the same time as the 1D surcharge, 1800 stamps were surcharged 1 2 D. Note that no fraction bar was used. These were placed on sale on 26 November.

Miss Gwendolyne A. Parsons, the Postmistress, carried out the overprinting of these surcharges.



E  
E

The 'Glover Flaw'.



E

18 Possible



E

The example, above, shows a forged double surcharge.

The 'Slotted Frame'.

The recently discovered 'Slotted Frame' variety occurs once per sheet on the left pane, row 1 stamp 4. It is a break in the outer and inner name tablet near the upper right corner.



15 Possible.



18 Possible.

E  
E

# CAYMAN ISLANDS – KING EDWARD VII

## THE SURCHARGE PROVISIONALS.



The example, above, shows a jump during the overprinting, resulting in a partial doubling of the surcharge.

### The 'Glover Flaw'.



15 Possible



The two examples, above, show forged overprints.  
 The example on the right shows the 'Glover Flaw', and is the only recorded example with forged overprint.

## CAYMAN ISLANDS – KING EDWARD VII:

### THE SURCHARGE PROVISIONALS.

Cover from GEORGE TOWN GRAND CAYMAN, with type 4 cancel dated NO 29 07 and type R1 registration mark. Jamaica Registered transit cancel dated DE 7 07. Reverse shows London arrival cancels dated 24 DEC 07 and 25 DEC 07. The 3 x 1 D on 5/- pays the 1d empire ½ ounce letter rate and 2d registration fee.



Only 22 covers are recorded bearing either 1 2 D on 5/- or 1 D on 5/-. Of these 22 covers, 18 use the 1 D with 9 of these being in combination with other values. The remaining 9 covers include 1 single used on a postcard and 6 covers with a single used on each. Thus, there are only 2 covers recorded franked solely with multiples of the 1 D on 5/-.

This is the second largest multiple known on cover.  
Ex Watkin, Meredith, Byl and BWISC Golden Jubilee auction.

This cover is number 5 in the Byl listing.

**CAYMAN ISLANDS – KING EDWARD VII:  
THE SURCHARGE PROVISIONALS.**



E

1D on 5/- used on part of a picture postcard.  
One complete picture postcard is recorded bearing this value.  
This is the only other recorded use on a picture postcard.



E

Pair of 1 2D on 5/- used on first day of issue, 26 November 1907

Fiscal Use of the surcharges on 5/-.



The stamps, above, although not revenue stamps, were fiscally used.

## CAYMAN ISLANDS – THE 'KEY-PLATE' PERIOD.

### KING EDWARD VII.

#### The Manuscript Provisionals.

The 1908 farthing, having been issued to cover the new, reduced, inland rate for postcards and printed matter up to two ounces, was running out. This was due to large orders being received from dealers overseas, with one dealer alone ordering 72,000 copies (which could not be fulfilled) and partly the negligence of the Post Office staff in allowing the situation to develop.

By early October the ¼d stamps ran out and new supplies had not arrived, under Requisition Number 68/08, dated 24 September 1908. The new Postmaster, William Graham McCausland, resorted to provisional franking. Miss Parsons, the previous incumbent, still worked at the post office but for only a few hours each day.

The second printing of the ¼d stamp arrived and was placed on sale on 3 November 1908. This ended the period of provisional franking.



Ex Peter Jaffe.

Giraldi type MP2. Only 4 recorded examples, all dated OC 8 08.

# CAYMAN ISLANDS – THE ‘KEY-PLATE’ PERIOD.

## KING EDWARD VII.

Fourth Series.



Requisition number 74/07, of 20 November 1907, submitted to De La Rue by the Crown Agents, asked for 96 sheets of the ½d value and 102 sheets of the 1d value, ie 11520 and 12240 stamps respectively. These were of the new Postage –Revenue design. The two values arrived and were placed on sale on 27 December 1907, filling the void that had rendered necessary the former provisionals.

The nine values are Wmk Multi-Crown CA, perf 14, using typography and are printed from Plate 1, with the 1d & 6d values additionally printed from Plate 2.



½d Green



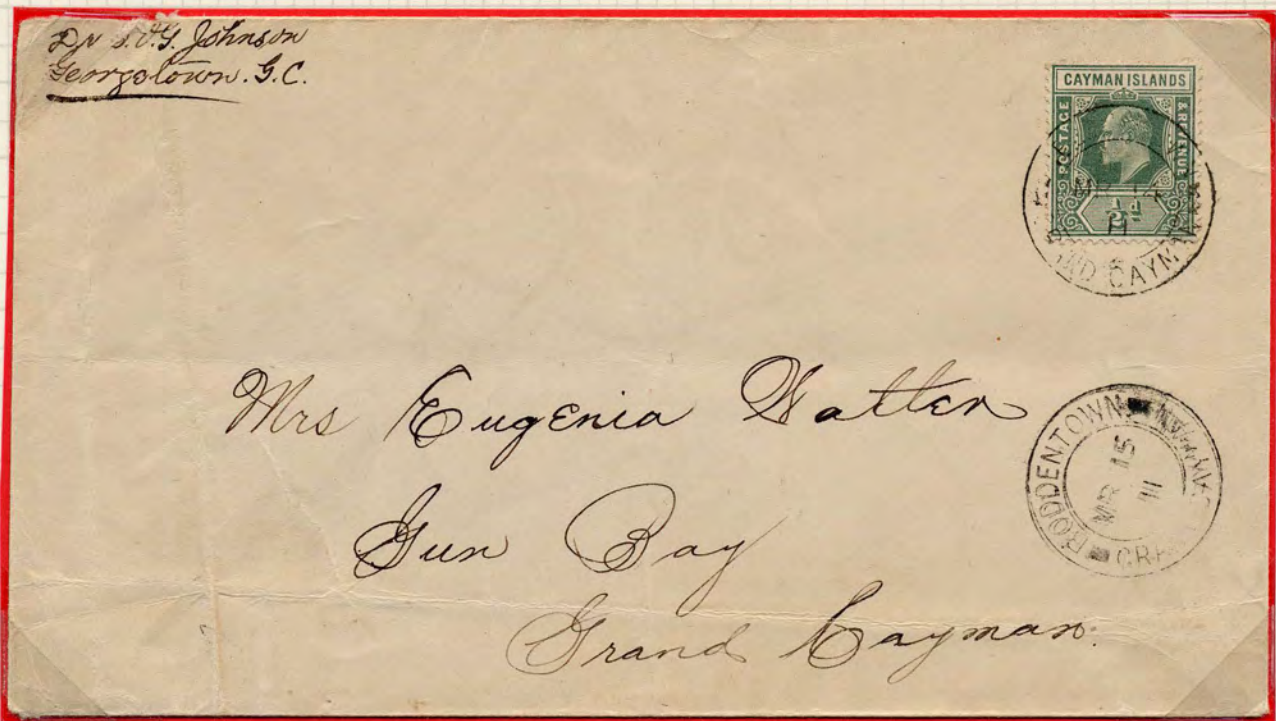
**CAYMAN ISLANDS – THE ‘KEY-PLATE’ PERIOD.**

**KING EDWARD VII.**

1907 - 1909 Series.



Fourth series ½d on internal cover paying the correct 1 ounce internal letter rate.



Fourth series ½d on internal cover paying the correct 1 ounce internal letter rate.  
This cover is one of the very few Rural Post period covers that does not have a Rural Post handstamp.

# CAYMAN ISLANDS – THE ‘KEY-PLATE’ PERIOD.

## KING EDWARD VII.

1907 - 1909 Series.



SHEDDEN ROAD, GEORGETOWN, GRAND CAYMAN.



Two postcards: The upper one shows ‘Shedden Road, Georgetown’, the lower shows the ‘Presbyterian Church, Georgetown’.



PRESBYTERIAN CHURCH. GEORGETOWN, GRAND CAYMAN.



Two Postcards, using two ½d's to pay the correct postage to South Africa.

# CAYMAN ISLANDS – THE ‘KEY-PLATE’ PERIOD.

## KING EDWARD VII.

Fourth Series.



1d Carmine

1

The 2 2 D on 4d Provisional.

By the end of January 1908, the ½d and 1d values were running low, the stock of the Postage – Postage 2½d was almost exhausted and the number of 4d stamps was not large. This situation did not give rise to concern, since it was expected that a replenishment of the low values, ordered on requisition number 74/07 of 18 February 1908, would arrive by a steamer due at the end of February, so that a supply of the 2½d stamp would be available to frank foreign letters that would be taken by the same steamer when she departed.



E

These plans were upset by the unexpected arrival of the yacht ‘Zenaida’ on 12 February 1908 and the offer by its’ owner, Sir Frederick Johnson, to convey any foreign mail to Ceinfgos, Cuba. As there was no regular mail-ship plying to the Cayman Islands at this time, the offer was accepted.

It was considered too risky to use the slender stock of current stamps. In order to ease the situation, four sheets (480 stamps) of the 4d stamp were handed to the Inspector of Police, Mr. J.H. O’Sullivan, for surcharging. The stamps were placed on sale on 14 February 1908 and sold out the same day.



E

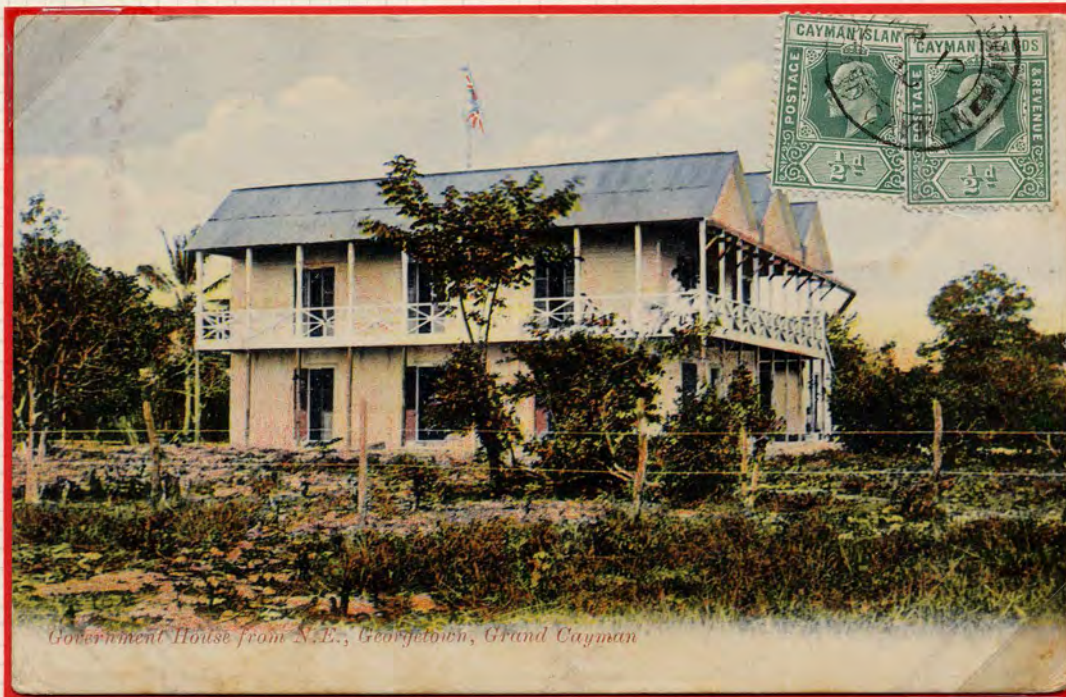
Forged surcharge.

# CAYMAN ISLANDS – THE ‘KEY-PLATE’ PERIOD.

## KING EDWARD VII.

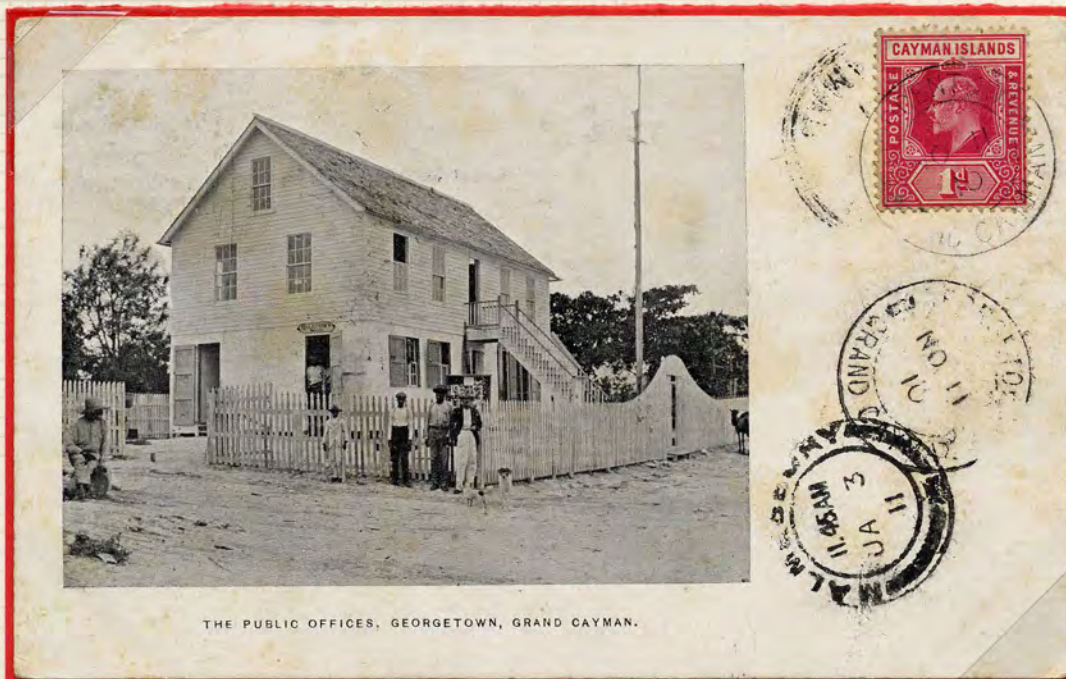
1907 - 1909 Series.

Two postcards: The upper one shows the ‘Government House’ at Georgetown, the lower one shows the Public Offices at Georgetown, where the Post Office was situated.



*Government House from S.E., Georgetown, Grand Cayman*

Postcard using two 1/2d's to pay the correct postage rate to South Africa.

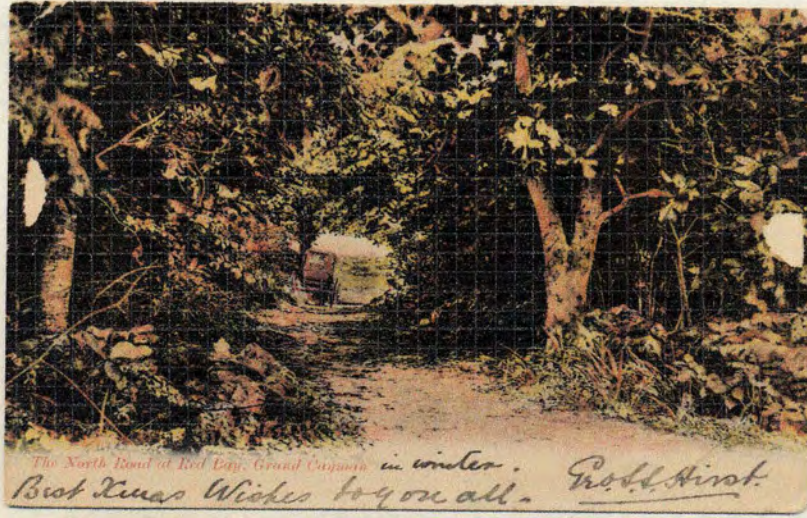


THE PUBLIC OFFICES, GEORGETOWN, GRAND CAYMAN.

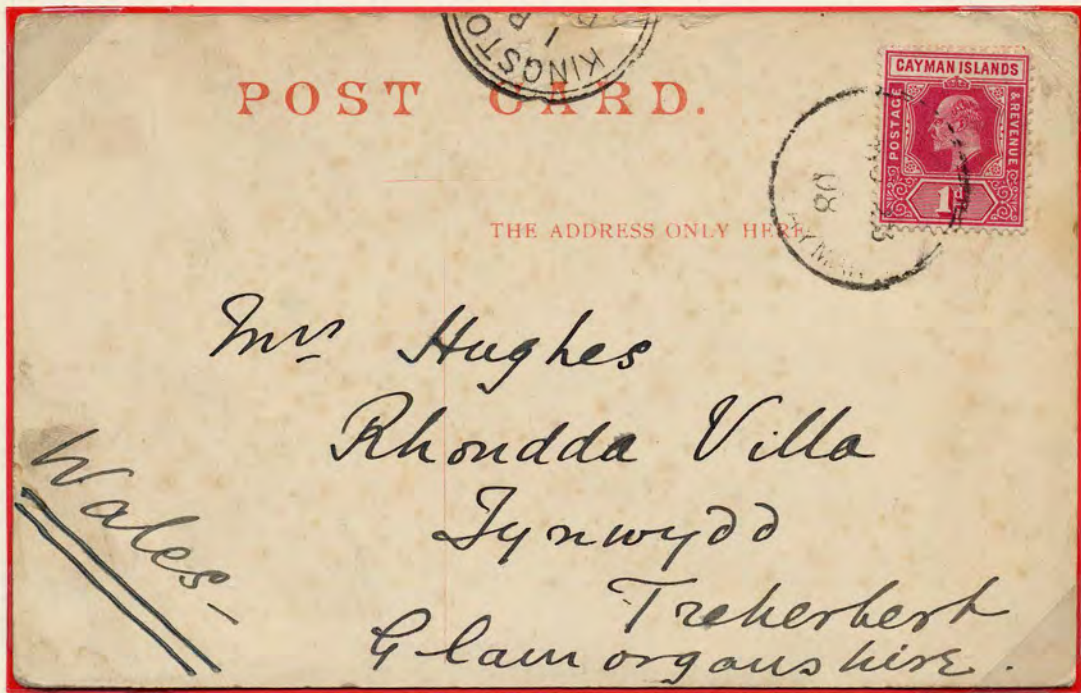
Postcard using the 1d to pay the correct postage to South Africa.  
Cancelled Boddentown NO 11 10 with Georgetown transit cancel NO 11 10

**CAYMAN ISLANDS – THE KEY-PLATE PERIOD:**

**KING EDWARD VII.**



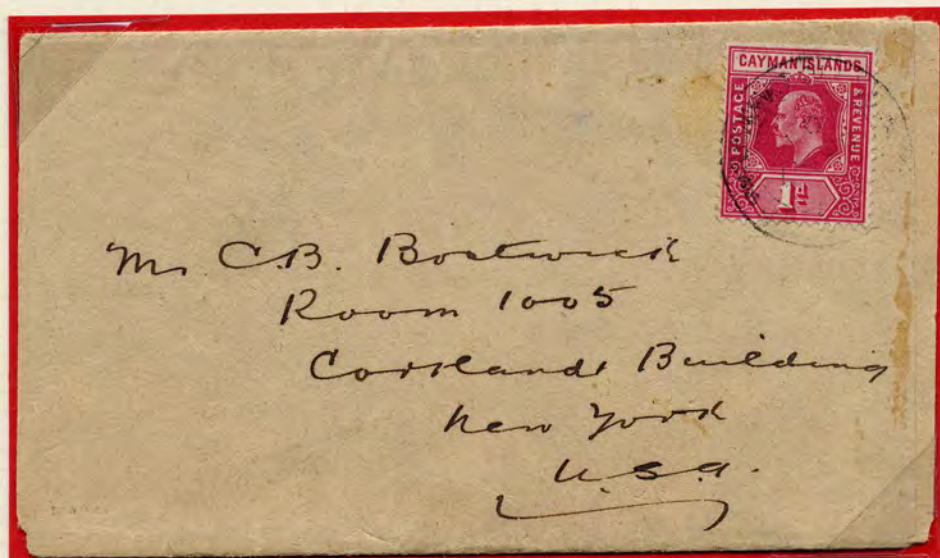
*The North Road at Red Bay, Grand Cayman in winter. Brod. Hirst.*  
Annotated by the Commissioner, Geo. S.S. Hirst, 'in winter'.



1d carmine from George Town to Wales, dated NO 23 08, paying correct postcard rate.

**CAYMAN ISLANDS – THE KEY-PLATE PERIOD:**

**KING EDWARD VII.**



Home made newspaper wrapper with 1d carmine, cancelled Georgetown AP 27 09. This pays the double printed matter rate for non-Empire countries, ½d per 2 ounces. Ex Maisel.



1d carmine from George Town to England, dated FE 22 09, paying correct postcard rate.

# CAYMAN ISLANDS – THE ‘KEY-PLATE’ PERIOD.

## KING EDWARD VII.

Fourth Series.



2½d Ultramarine



3d Purple/yellow



The 3d purple/yellow printings show paper variations. This is probably due to there being four printings of this value, between February 1908 and March 1909.

# CAYMAN ISLANDS – THE 'KEY-PLATE' PERIOD.

## KING EDWARD VII.



East End Type 1 Cancellor.

In the early years of the twentieth century, the Commissioner arranged for a small post office to be opened at East End, to serve the community at the eastern end of the island. The post office was issued with the type 1 canceller which had no year slug. In 1908 there was a change of policy, with a change of Commissioner, and the East End Post Office was closed. It was believed that the post office was reopened on 10 September 1913. New information to hand, shows that the East End Post Office was reopened sometime earlier and the type 1 canceller was again used. This canceller was found to be damaged, thus a new canceller was ordered and this was first used on 10 September 1913.

The cover, below, shows the type 1 canceller used to cancel a KEVII 2½d. The KGV 2½d was not ordered until requisition 33/14 of 29 May 1914. The cover has been cancelled at East End on JY 17 1913 and has a transit arrival cancel at Boddentown for the same date. The cover stayed at Boddentown overnight and received a transit departure cancel JY 18 1913. The reverse shows a Georgetown transit cancel for JY 18 1913. The KEVII 2½d pays the ½ ounce non Empire rate.



The only recorded cover with East End type 1 cancel.



1

# CAYMAN ISLANDS – THE KEY-PLATE PERIOD:

## KING EDWARD VII.



Plate No 1 block of 56, of the 1908 3d purple/yellow.

1

# CAYMAN ISLANDS – THE 'KEY-PLATE' PERIOD.

## KING EDWARD VII.

Fourth Series.



4d Black & red/yellow

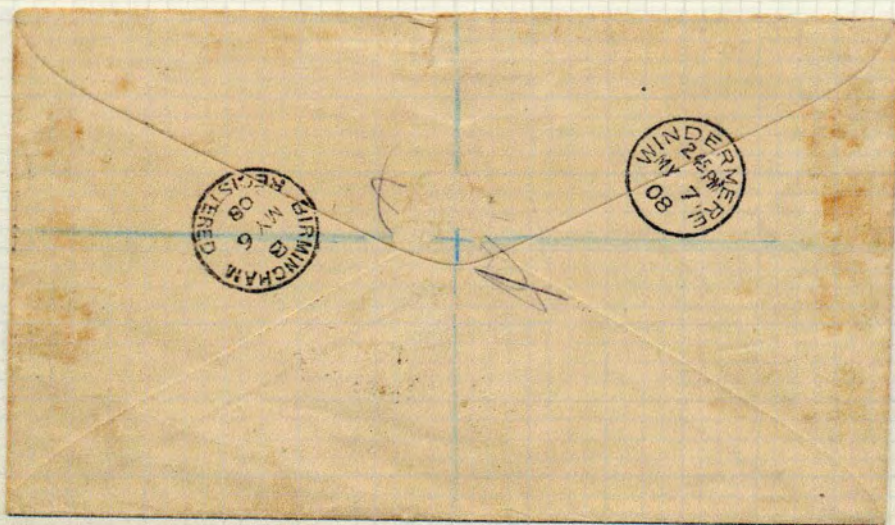


The second largest multiple recorded of the 1908 4d black & red/yellow.

**CAYMAN ISLANDS – THE KEY-PLATE PERIOD:**

**KING EDWARD VII.**

4d cancelled George Town AP 6 08 type 4 to England, paying the 2d registration fee and correct Empire rate for the 2 ounce letter rate.



Reverse showing Birmingham transit and Windermere arrival cancels.  
Ex Maisel.

# CAYMAN ISLANDS – THE ‘KEY-PLATE’ PERIOD.

## KING EDWARD VII.

Fourth Series.



6d Dull & bright purple – Plate 1 printing.



6d Dull purple & violet purple – Plate 2 printing.



The examples, above, with no Plate number below the right hand stamp, indicates that these blocks are from the Plate 2 printing of 7 July 1911, requisition number 52/11

CAYMAN ISLANDS - THE 'KEY-PLATE' PERIOD.

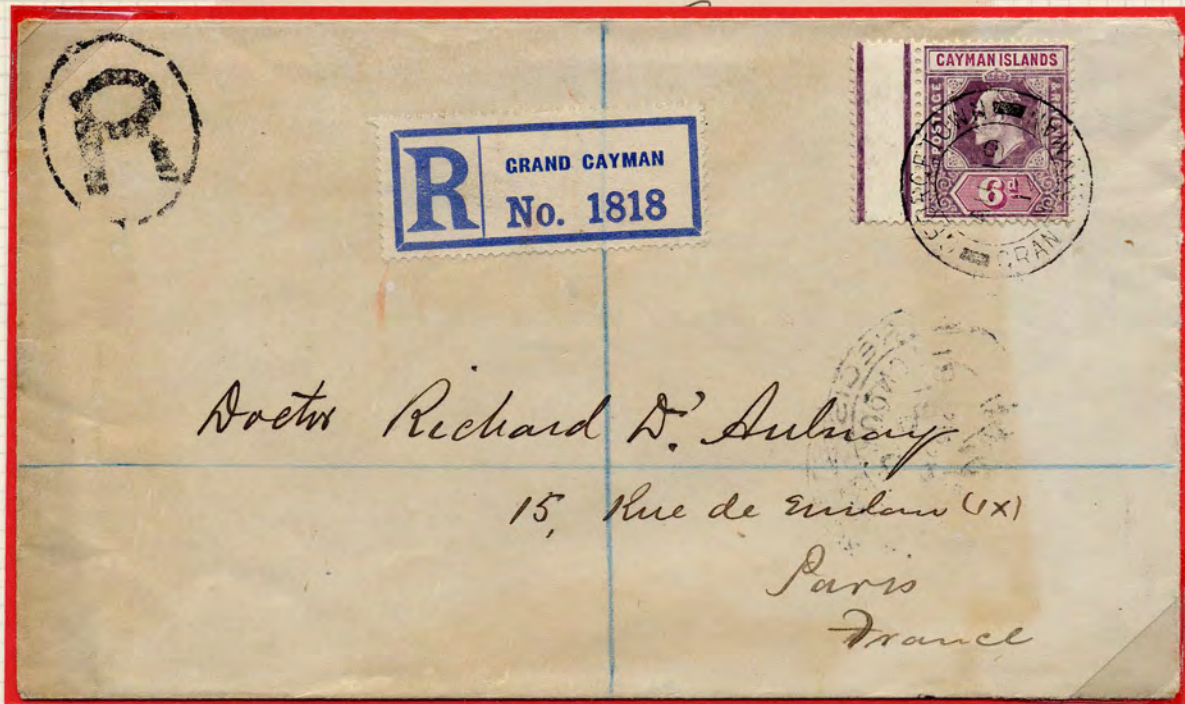
KING EDWARD VII.

1907 - 1909 Series.

Post office  
Grand Cayman  
19/8/12

Dear Sir  
Enclosed please find  
stamps as per your  
order of 8/7/12, including  
Post & Registration

Yours very truly  
A Bodden



Fourth series 6d, from Plate 2, to France with letter enclosed from the Postmaster A. Bodden

**CAYMAN ISLANDS – THE KEY-PLATE PERIOD:**

**KING EDWARD VII.**

Fourth Series.



1/- Black & green.



5/- Green & red/yellow



5/- cancelled George Town JY 22 08 type 4 on OHMS registered cover to Germany. This cover is over stamped, as the correct rate was 4½d for 1 ounce registered to non-empire country.

# CAYMAN ISLANDS – THE ‘KEY-PLATE’ PERIOD.

## KING EDWARD VII.

Fourth Series.

The 1/- was also printed, and the 10/- only printed, using Wmk Crown CA paper.



1/- Black/green.



10/- Green & red/green.



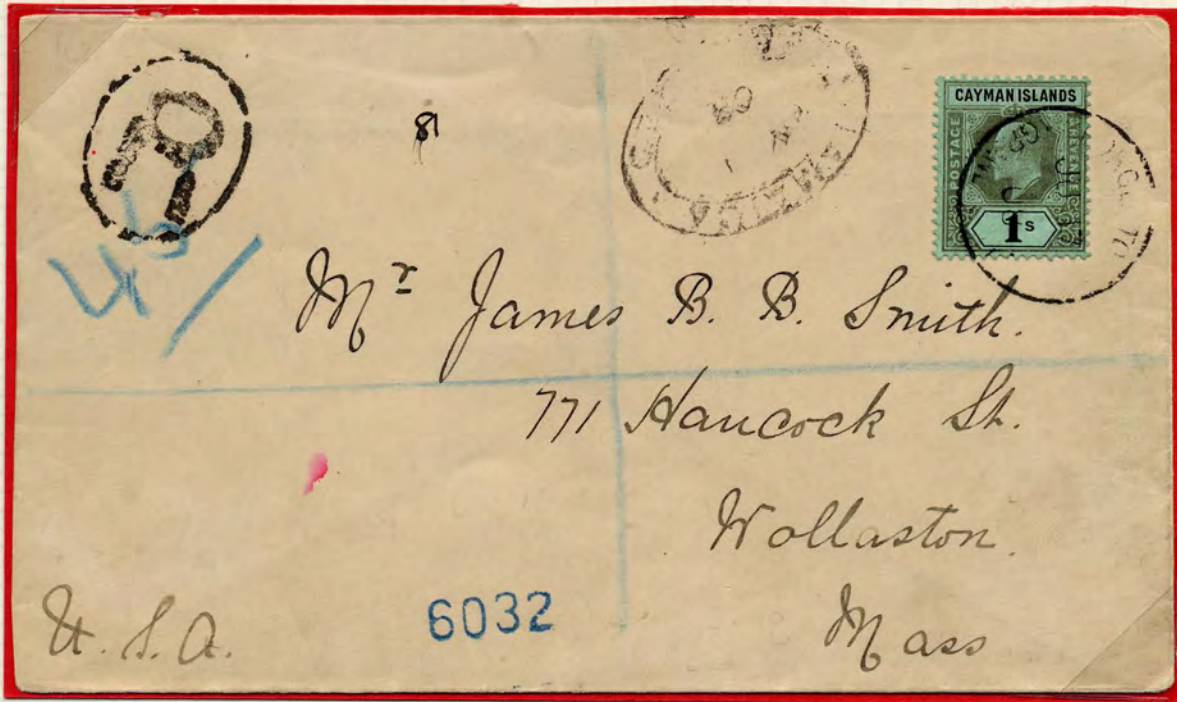
The two stamps to the right, above, show the ‘swan-necked’ ‘S’ (the second ‘S’ in ‘Islands’). This flaw appears on the left hand pane, row 1 stamp 6 (L1/6).

Quantities printed:-	½d	91768 & 449 overprinted ‘SPECIMEN’
	1d	115800 & 449 overprinted ‘SPECIMEN’
	2½d	67560 & 449 overprinted ‘SPECIMEN’
	3d	37440 & 449 overprinted ‘SPECIMEN’
	4d	6240 & 449 overprinted ‘SPECIMEN’
	6d	35520 & 449 overprinted ‘SPECIMEN’
	1/-	18840 & 449 overprinted ‘SPECIMEN’
	5/-	6240 & 449 overprinted ‘SPECIMEN’
	10/-	3000 & 449 overprinted ‘SPECIMEN’

**CAYMAN ISLANDS – THE KEY-PLATE PERIOD:**

**KING EDWARD VII.**

1/- on Crown CA paper cancelled George Town JU 17 08 type 4 to the USA, over stamped as the 1 ounce registered rate should be 4½d.



Reverse showing New York and Boston transit cancels.  
Ex Maisel.



# CAYMAN ISLANDS – THE ‘KEY-PLATE’ PERIOD.

## KING EDWARD VII.

1907 – 1909 Series.



## CAYMAN ISLANDS – THE ‘KEY-PLATE’ PERIOD.

### KING EDWARD VII.

#### The 1D on 4d Revenue Stamp.

In May 1908 the stock of low value stamps, at George Town Post Office, ran out. During this shortage an American inhabitant applied for a sheet of 1d stamps. On being informed that none were available, he lodged a complaint: As a result, the Commissioner, George Stephenson Shirt Hirst, gave instructions that a small quantity of the current 4d stamps be surcharged 1D. (This shows that the supply of 1d stamps – 12240 – ordered on requisition number 74/07, of 20 November 1908, had sold out. The 4d was ordered on the same requisition number but dated 18 February 1908, with the next supply of the 1d value ordered on requisition number 48/08 of 23 June 1908.)



E  
E

These stamps were to be used solely for fiscal, and not postal, use.  
Examples are known used and were either cancelled by favour or passed unnoticed, when used on an envelope in combination with other denominations.



Ex Meredith.



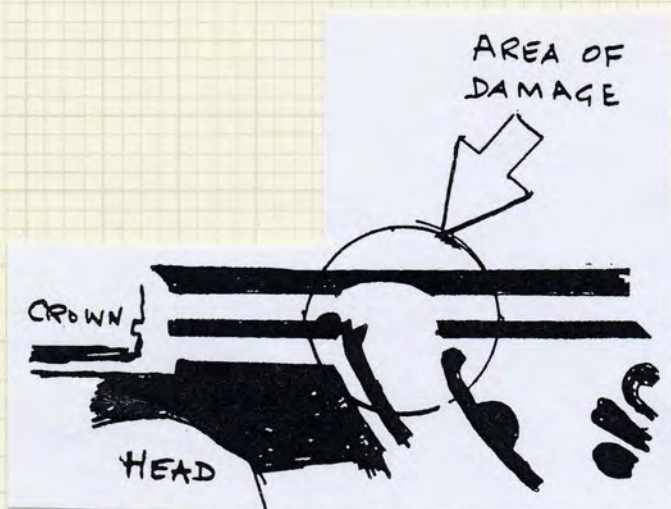
Two printings of the surcharge were carried out. The dates of issue being 12 May and 13 May 1908.  
The total number surcharged was 396, viz: Three sheets and thirty-six odd copies.

# CAYMAN ISLANDS – THE ‘KEY-PLATE’ PERIOD.

## KING EDWARD VII.

### The ‘Spavin Flaw’.

The ‘Spavin Flaw’ is an upward indentation in the head plate frame line to the right of the crown. It occurs on all values printed from the King Edward VII Postage – Revenue Plate 1, and appears on the third stamp in the first row of the left pane (L1/3).



Enlarged detail.

Example showing position L1/3.



764 or 765 Possible



563 Possible



312 Possible



157 Possible



52 Possible



157 Possible

# CAYMAN ISLANDS – THE ‘KEY-PLATE’ PERIOD.

## KING EDWARD VII.

Fourth Series.

The 1d & 6d values printed from the previously unrecorded Plate 2.



1d Carmine



6d Dull purple & violet-purple

Quantities printed:-	Plate 1	1d carmine	223200
	Plate 2	1d carmine	120000
	Plate 1	6d dull purple & bright purple	49920
	Plate 2	6d dull purple & violet-purple	46080

CAYMAN ISLANDS – THE KEY-PLATE PERIOD:

KING EDWARD VII.



Right pane of the 1d carmine from Plate No 2, from requisition 52/11, 7 July 1911.

Handwritten scribbles and numbers at the bottom of the page, including '35'.

**CAYMAN ISLANDS – THE ‘KEY-PLATE’ PERIOD.**

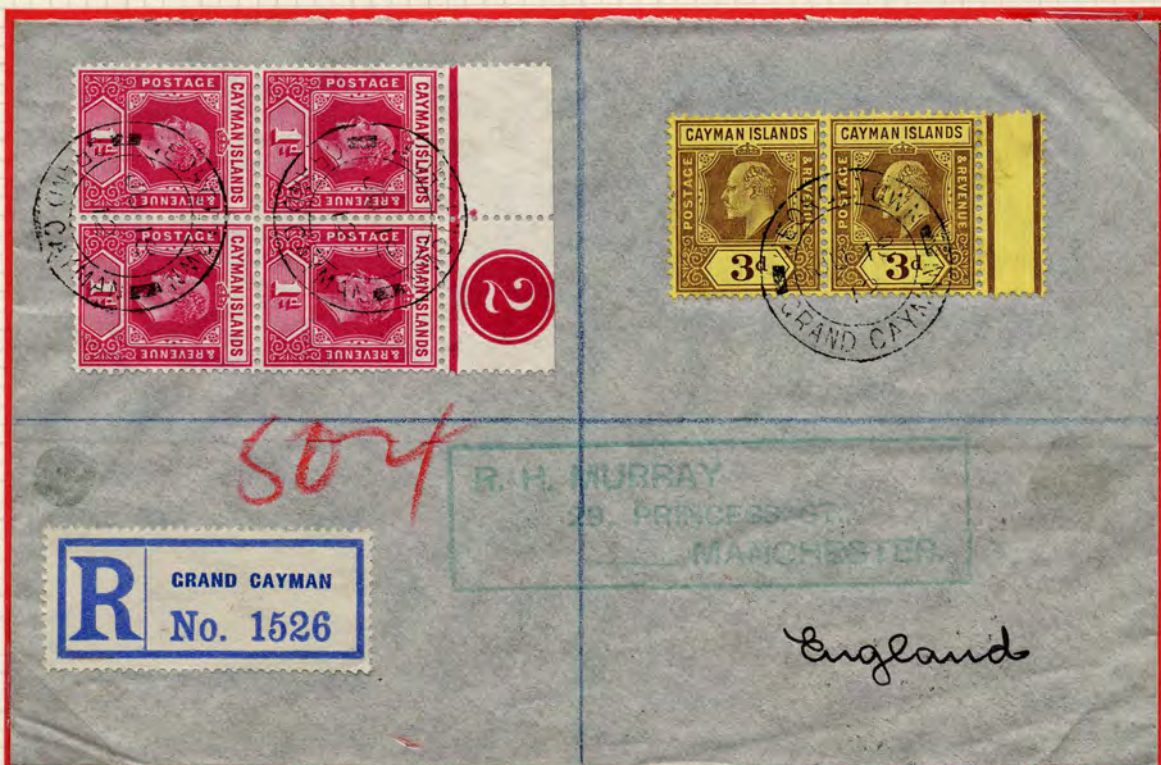
**KING EDWARD VII.**

1907 - 1909 Series.



Fourth series 1d empire postcard rate on a reply card sent by R.C. Young, the Presbyterian Minister, to acknowledge receipt of 9 volumes of reports on the World Missionary Conference. Annotated, 'sent through U.S. Foreign Mission Committee'.

**This is the only recorded example of a reply printed card sent from the Cayman Islands.**



Fourth series 1d Plate 2 block on cover. **One of only two recorded examples used on cover.**

**CAYMAN ISLANDS – THE KEY-PLATE PERIOD:**

**KING EDWARD VII.**

1907 – 1909 Series.



Fourth series 6d, from Plate 2, cancelled Georgetown type 5, dated NO 15 13.



Fourth series 6d, from Plate 2, on local cover dated MY 29 13.

**CAYMAN ISLANDS – THE KEY-PLATE PERIOD:**

**THE 1908 FARTHING.**



Row 1 Stamp 4 shows the 'white flaw' to the right of the crown, which obliterates some of the leaves.  
This was removed before the third printing was made.



**CAYMAN ISLANDS – THE KEY-PLATE PERIOD:**

**THE 1908 FARTHING.**



Picture postcard, 'Government House from N.E., Georgetown, Grand Cayman.



1908 1/4d used to pay the correct internal rate for postcards, cancelled Georgetown type 5, dated MR 4 09.

## CAYMAN ISLANDS – THE KEY-PLATE PERIOD:

### FARTHING POSTAL STATIONERY CARDS.

9492 farthing stationery cards, either 115mm x 89mm or 121mm x 75mm, were dispatched by De La Rue to the Cayman Islands, in 4 batches, between 6 June 1908 and 13 July 1910.

The farthing postcard was intended for internal use.



The above postcard was sent, from Georgetown on 21 January 1910 to London. It has a T enclosed in a circle, with manuscript 5. It has also received the ½D F.B. postage due strike in London.

This is the only recorded farthing stationery postcard, which has not been up-rated, to a UPU country, and the only one with postage due markings.

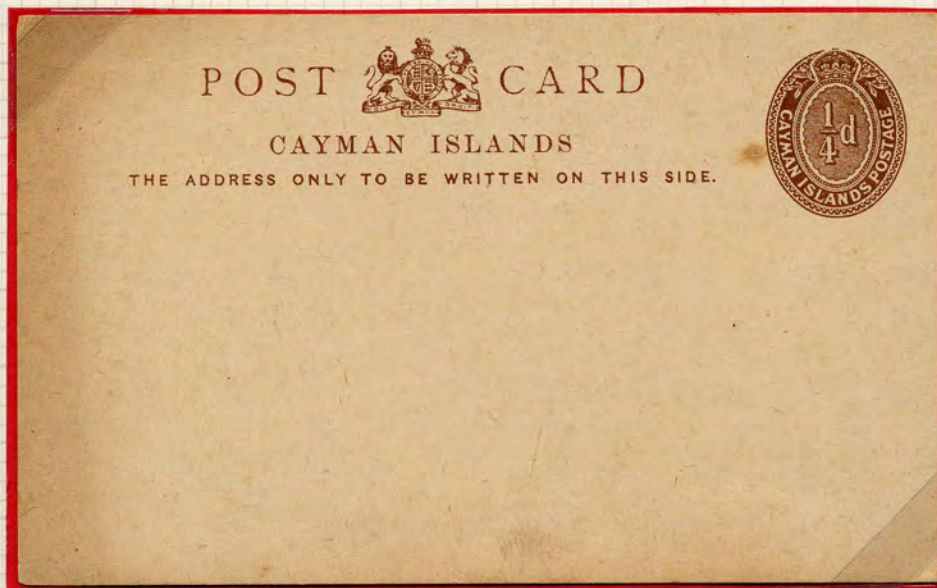


The above postcard was sent from George Town to Newark, USA, via Jamaica. It is dated OC 20 08 and is thus used during the second manuscript period. The postal rate for postcards was 1d, but as no farthing stamps were available the card is over-rated by ¼d.

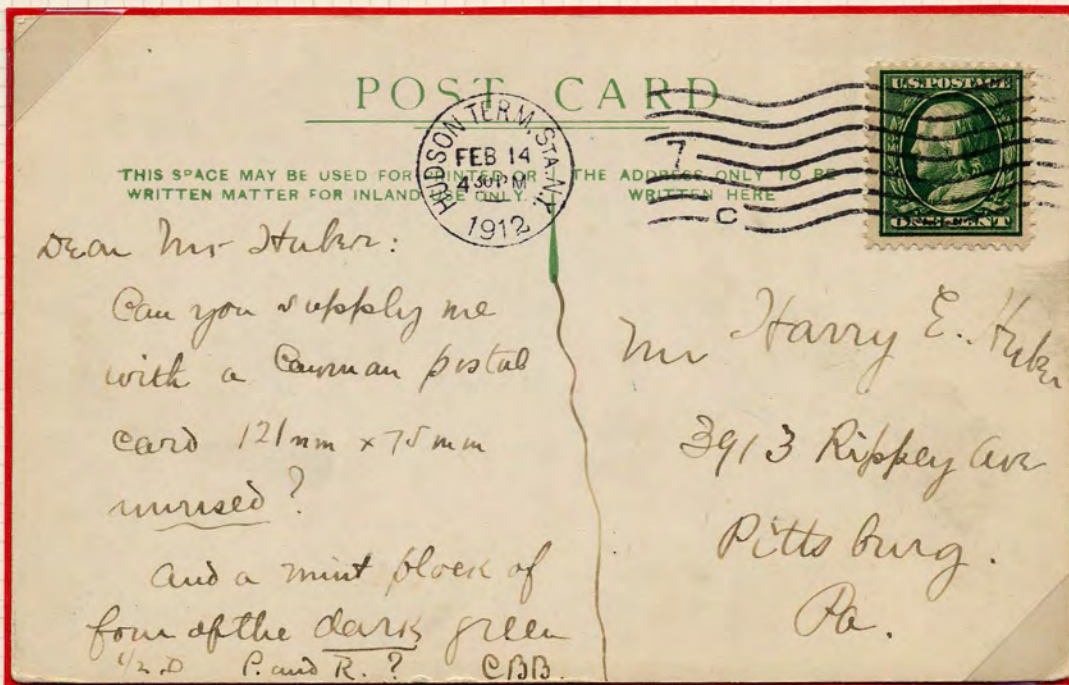
**CAYMAN ISLANDS -- THE KEY-PLATE PERIOD:**

**KING EDWARD VII.**

**POSTAL STATIONERY.**



The 1/4d postal stationery card, printed by De La Rue, requisition number 22/08, dated 6 June 1908.



The Cayman Island postcard, above, was mailed in the United States from Charles Bostwick to Harry Huber. Both these men were early Cayman Island specialist collectors.

This stationery card 121mm x 75mm is nowadays very difficult to find mint. The message on the card proves that in 1912, only four years after issue, the card in mint condition was already hard to find.

## CAYMAN ISLANDS – THE KEY-PLATE PERIOD:

### KING GEORGE V.

First Series.

The King George V first series of stamps was printed between 1912 and 1920, by De La Rue, on multiple Crown CA watermark paper. Due to the restrictions placed on paper manufacturing during World War I, there are a number of colour variations for some denominations.

The stamps were requisitioned as they were required and thus the original thirteen values appeared over a number of years. The first requisition being 15 March 1912 for four values and on 29 May 1914 the final two values were requisitioned, making up the set.  
The final requisition for this issue was on 10 November 1920.



On White Paper.



On Colour Paper.

Because the number of members of the UPU varied as this issue was produced, the number of specimen examples is not constant.

There were 404 examples charged for all values, except the 2½d, 3d, 1s, 5s and 10s, for which there were 396 charged.

There are no records in the De La Rue 'Private Day Books', as to how many of the three values on coloured paper were overprinted 'specimen' for distribution to the UPU.

# CAYMAN ISLANDS – THE KEY-PLATE PERIOD:

## KING GEORGE V.

First Series.



Ex. De La Rue Archive.



Marginal & Multiple Examples.

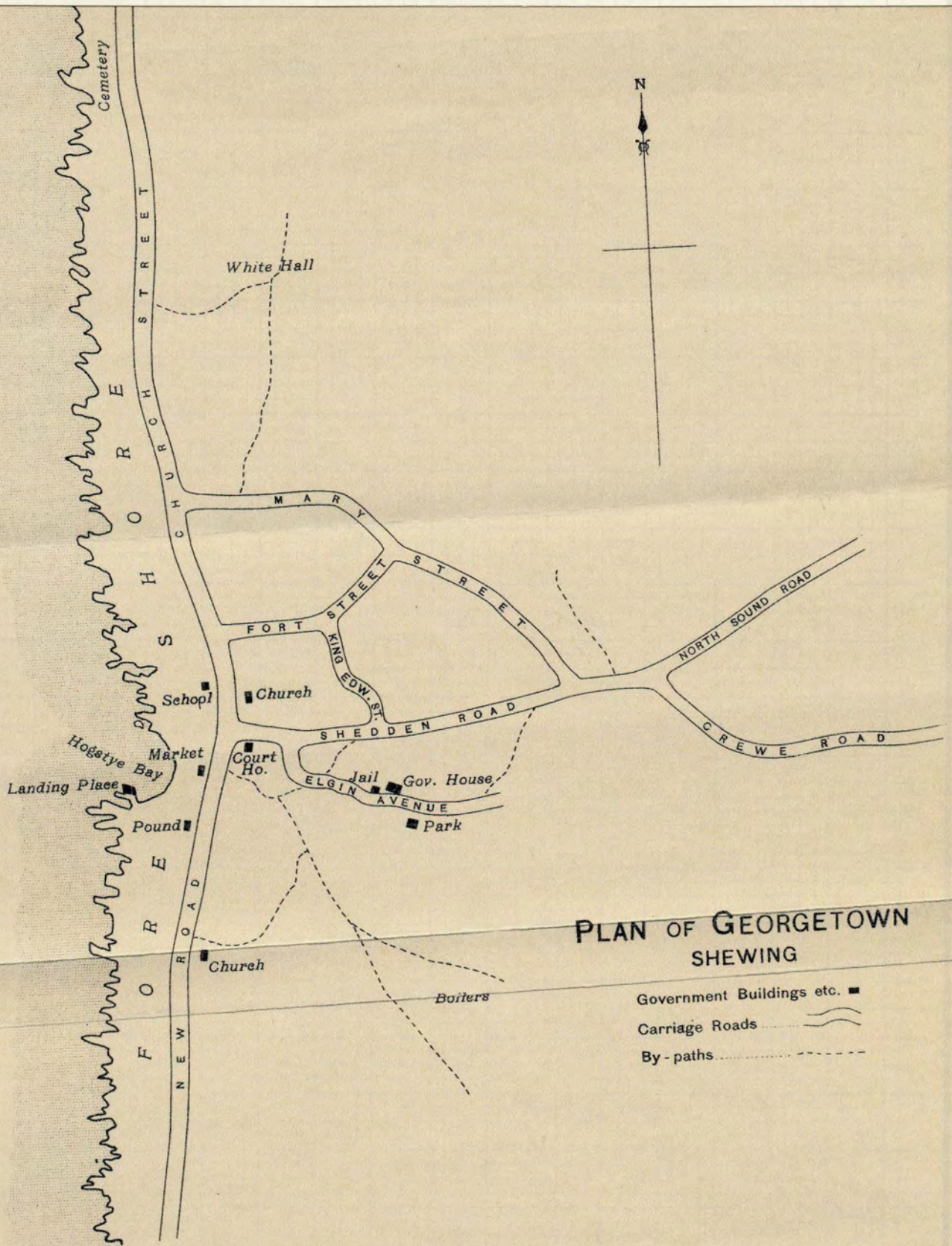


Examples with broken 'M' in 'Specimen'.

The broken 'M' appears on both panes, row 7 stamp 5. Thus a maximum of 7 for each value can exist.

# CAYMAN ISLANDS – THE KEY-PLATE PERIOD:

KING GEORGE V.



*Ordnance Survey, Southampton, 1913.*

'Plan of Georgetown Shewing Government Buildings etc., Carriage Roads and By-paths' in 1911, published in the, "Cayman Islands (Jamaica) report for 1911 - 12", May 1913.

# CAYMAN ISLANDS – THE KEY-PLATE PERIOD:

## KING GEORGE V.

First Series.



1/4d Brown.

Only 1 requisition, dated 11 October 1912.



1/2d Green.

There were 3 requisitions, between  
5 March 1912 and 11 October 1918.



1d Red.

Only 1 requisition, dated  
10 December 1912.

# CAYMAN ISLANDS -- THE KEY-PLATE PERIOD:

## KING GEORGE V.

First Series.



2d Grey.

There were 2 requisitions, dated 15 March 1912 and 10 October 1918.



2½d Bright Blue & 2½d Deep Bright Blue.

There were 6 requisitions, between 29 May 1914 and 11 October 1918.



3d Purple/Yellow.

On requisition, dated 23 October 1914.



# CAYMAN ISLANDS – THE KEY-PLATE PERIOD:

## KING GEORGE V.

First Series.



3d Purple/Yellow on white back.  
On requisition dated 22 October 1913.



3d Purple/Yellow on lemon back.



3d Purple/Yellow on orange-buff.



3d Purple/Yellow on buff.

# CAYMAN ISLANDS – THE KEY-PLATE PERIOD:

## KING GEORGE V.

First Series.



3d Purple/Yellow on pale yellow.

There were 5 requisitions, between 22 October 1913 and 10 November 1920.

# CAYMAN ISLANDS – THE KEY-PLATE PERIOD:

## KING GEORGE V.

First Series.



2/- Purple & Bright Blue/Blue.  
Only 1 requisition, dated 15 March 1912.



3/- Green & Violet.  
Only 1 requisition dated 15 March 1912.

## CAYMAN ISLANDS – THE KEY-PLATE PERIOD:

### KING GEORGE V.

First Series.



5/- Green & Red/Yellow.  
Only 1 requisition, dated 29 May 1914.



10/- Deep Green & Red/Green.  
On requisition dated 23 October 1914.



10/- Deep Green & Red on white back (Only 42 plate number examples possible).  
On requisition dated 22 October 1913.



10/- Deep Green & Red on blue/green, olive back (Only 60 plate number examples possible).  
On requisition dated 9 January 1918.



#### QUANTITIES PRINTED.

¼d	617,640
½d	168,420
1d	122,340
2d	416,520
2½d	182,520
3d	52,320
4d	29,460
6d	30,420
1/-	30,960
2/-	36,240
3/-	35,420
5/-	3,120
10/-	5,880

# CAYMAN ISLANDS – THE KEY-PLATE PERIOD:

## KING GEORGE V.

First Series.



Used, showing a variety of cancellations.

**CAYMAN ISLANDS -- THE KEY-PLATE PERIOD:**

**KING GEORGE V.**



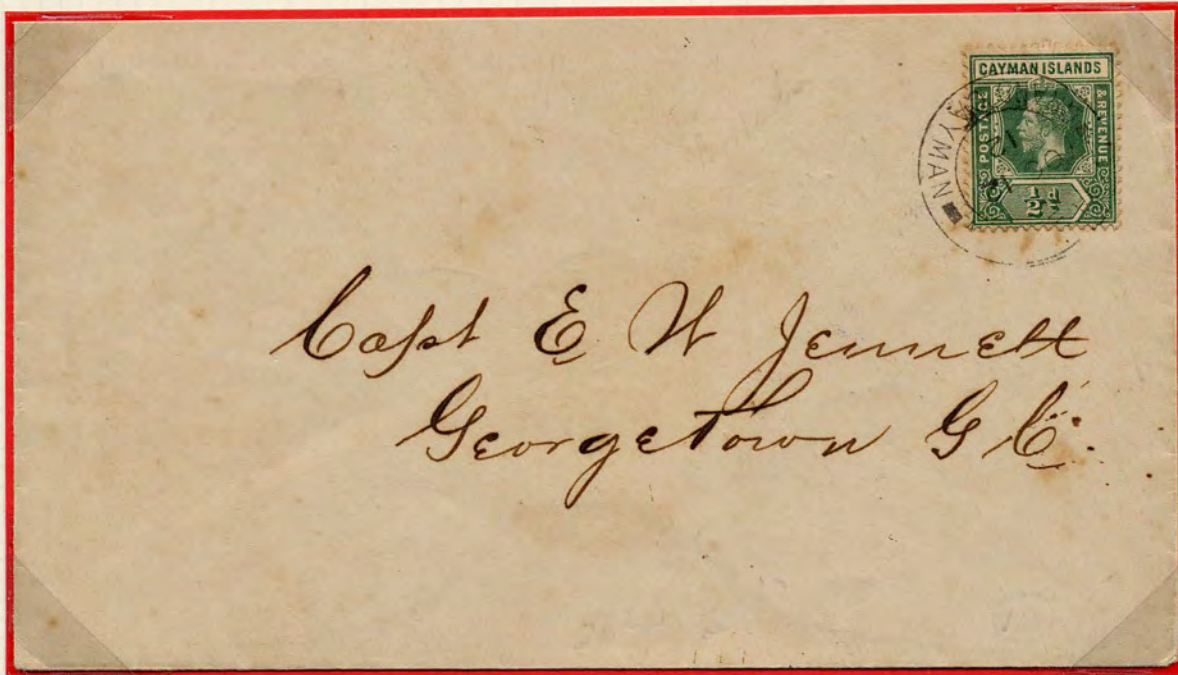
1/2d on cover from Cayman Brac to Georgetown, used to pay the internal 1 ounce letter rate.



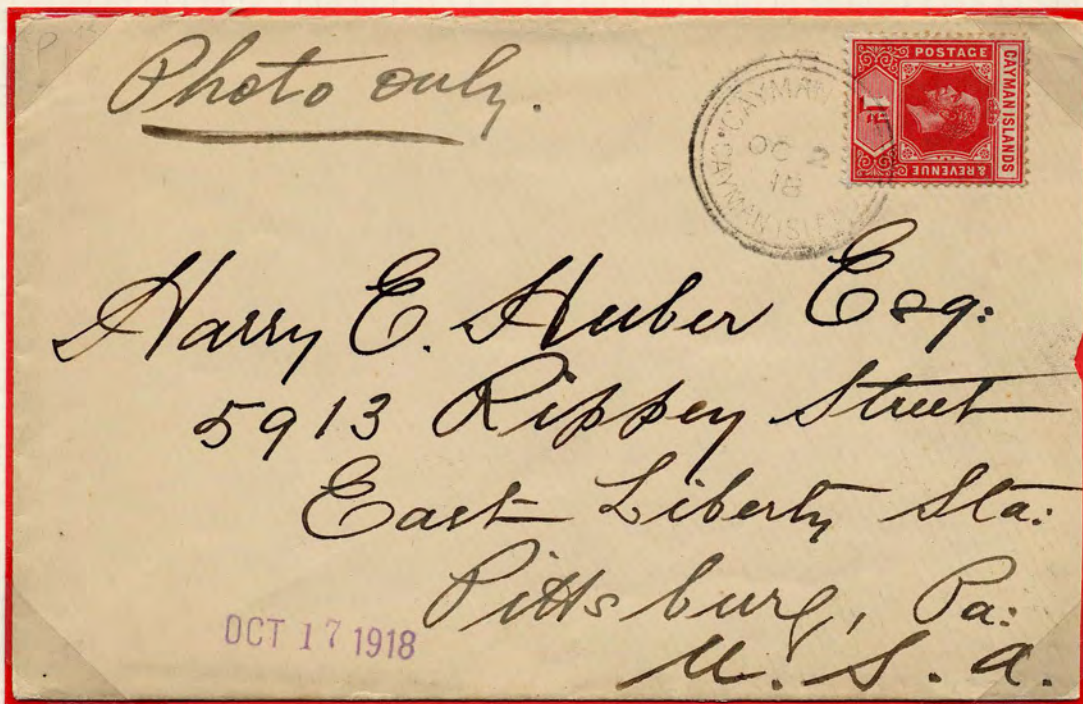
1/2 x 5, used to pay the 2 1/2d non-empire letter rate for 1 ounce, on scarce 'Mourning Cover'.

**CAYMAN ISLANDS – THE KEY-PLATE PERIOD:**

**KING GEORGE V.**



½d on cover from Boddentown to Georgetown, used to pay the internal 1 ounce rate.



1d on cover from Cayman Brac to Pittsburg, USA, used to pay the Printed Matter rate.

## CAYMAN ISLANDS -- THE KEY-PLATE PERIOD:

### KING GEORGE V.

½d, 1d and 3d on commercial cover cancelled Georgetown type 5, dated MR 8 15 with type 5 registration etiquette, paying the correct 1 ounce registered non-empire letter rate. The front also shows an example of the 'Returned Letter Branch Jamaica' cancel, dated 5 MY 15.



Reverse showing a variety of transit cancels, together with 'Returned To Writer' and 'Unclaimed' handstamps.  
Ex Maisel.



**CAYMAN ISLANDS – THE KEY-PLATE PERIOD:**

**KING GEORGE V.**

CAYMAN ISLANDS.  
(DEPENDENCY OF JAMAICA)  
WEST INDIES.

GEORGE TOWN, GRAND CAYMAN,

POST OFFICE, 19 Aug 1914

(In case of reply please quote  
the No. )

Sir,

I have the honour to acknowledge the receipt of  
your letter of 25/6/14 enclosing remittance  
by Am. Rev. Bills amounting to £ <sup>#3<sup>00</sup></sup> s. 12 d. 3

Postage Stamps as listed below are sent in  
accordance with your request.

*No King Geo 3 on hand*

I have, etc.,

*A. Bodden*

Postmaster



3d and 2d pair used to pay the 2 ounce registered rate to France. Note that the 3d has the 'Spavin Flaw'.  
Post Office form signed A. Bodden, Postmaster., who has written, 'no King Geo 3d on hand'.

## CAYMAN ISLANDS – THE KEY-PLATE PERIOD:

### KING GEORGE V.

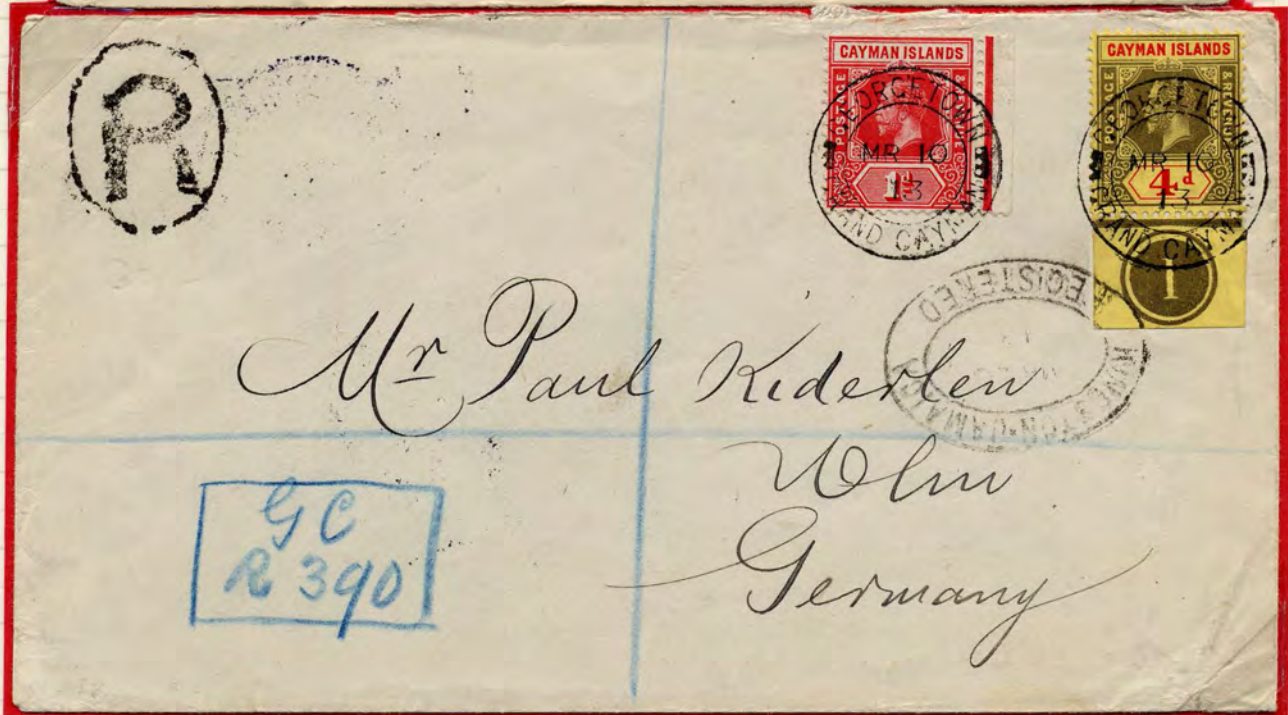
2½d bright blue on commercial cover cancelled Georgetown MR 30 15 type 5, from J.S. Webster to a Captain in the Mercantile Marine, Cuba, paying the correct 1 ounce non-empire letter rate. The front also shows an example of the 'Returned Letter Branch Jamaica' cancel, dated 24 JY 15.



Reverse showing Cuba arrival and return cancels.  
Ex Maisel.

CAYMAN ISLANDS - THE KEY-PLATE PERIOD:

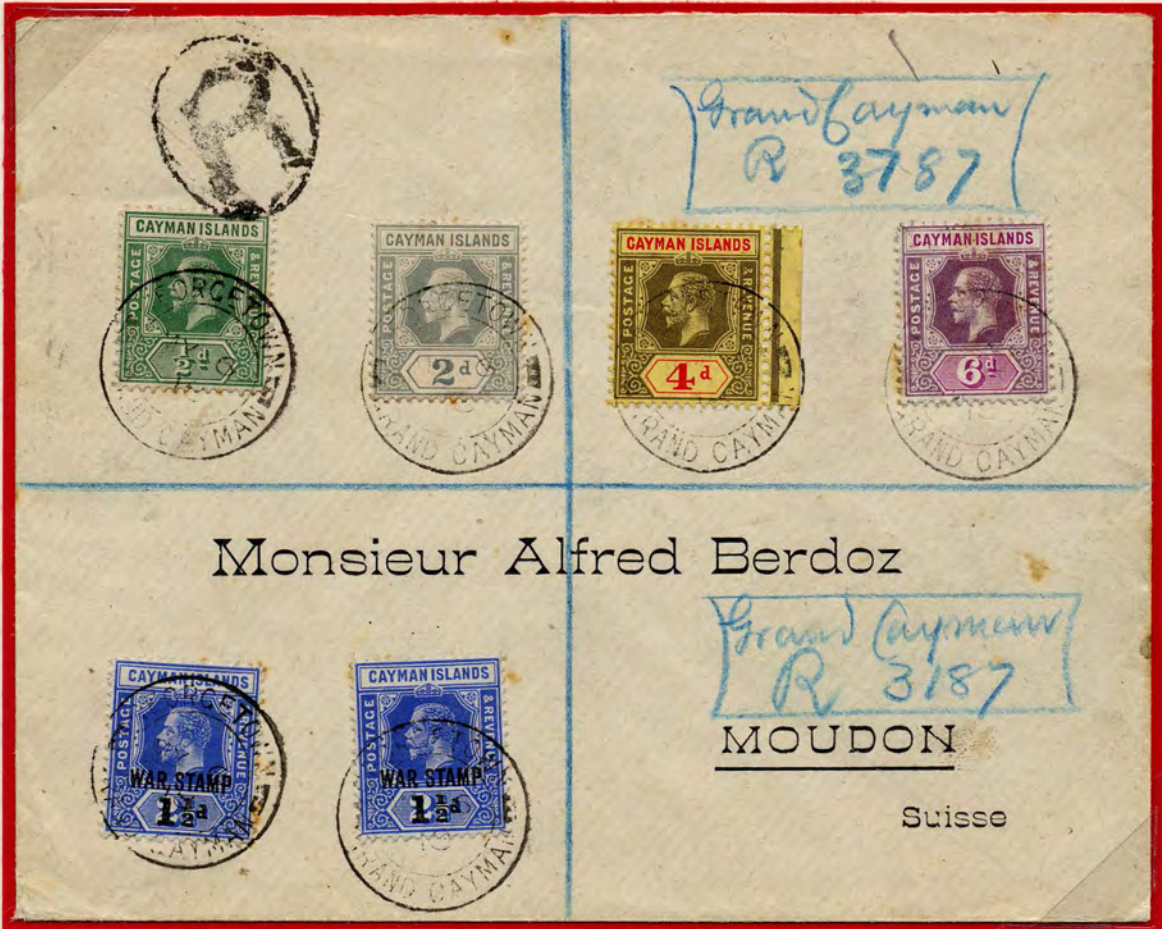
KING GEORGE V.



Two covers showing the Georgetown type 4 registration etiquette. One with 'GC' above the number (18.02.1913 - 10.06.1915) and one with 'GC' below the number (19.10.1912 - 10.12.1912).

**CAYMAN ISLANDS – THE KEY-PLATE PERIOD:**

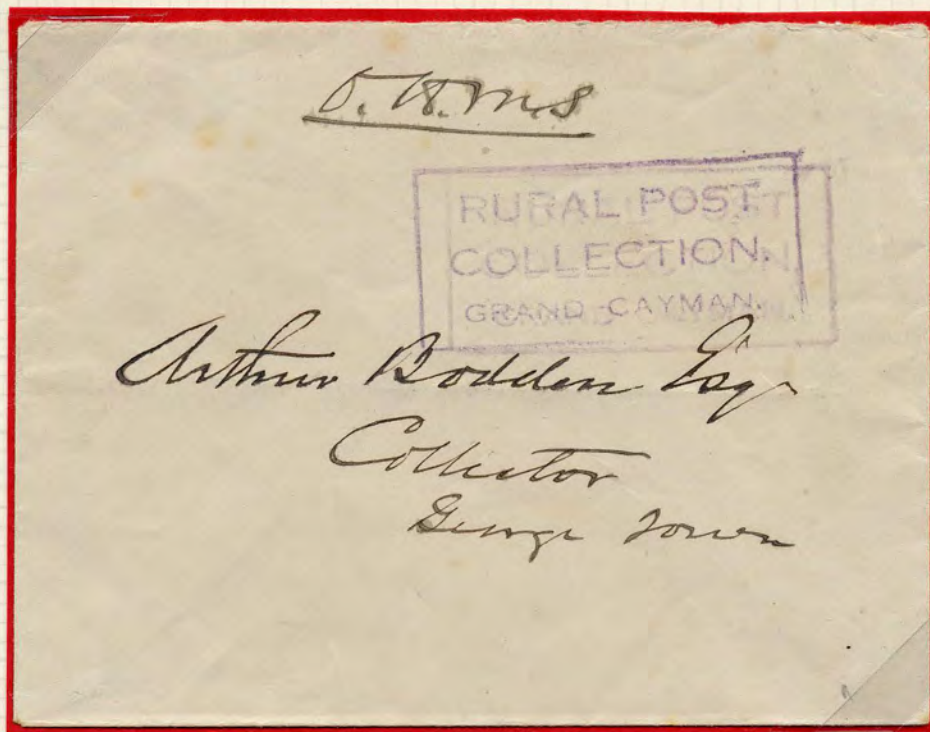
**KING GEORGE V.**



Cover from Georgetown to Switzerland, dated MY 6 18.  
This cover is of interest, as it is double registered, with different registration numbers.

**CAYMAN ISLANDS – THE KEY-PLATE PERIOD:**

**KING GEORGE V.**



Local OHMS envelope to Arthur Bodden, who was Collector for Customs and Internal Revenue, as well as Taxes, for Georgetown.

It is stated in the 1909 'Handbook of The Cayman Islands', Edited by George S.S. Hirst, and printed by the Gleaner Company Limited, Jamaica, that, "Very little business is done however at East End; Georgetown and Cayman Brac being responsible for the collection of the greater part of the Customs duties".

This cover was handed to the 'Waggoner' between Boddentown and Georgetown and received the Rural Post handstamp. No postage was payable, as the cover is internal O.H.M.S. There is no Georgetown receiving postmark, as the cover must have been handed to Arthur Bodden, by the Waggoner, before he delivered any other mail to the Post Office at Georgetown.

Most OHMS rural post covers are stamped, as they are addressed overseas.

## CAYMAN ISLANDS – THE KEY-PLATE PERIOD:

### WAR TAX.



1 1/2d on 2 1/2d Grey.

Overprint type 18, carried out at the 'Government Printing Works', Kingston, Jamaica.

Quantity overprinted: 71,400.

Variety: Missing top half to fraction, R1/2.



Variety: Missing serif to 1 in fraction, and 'T' mark between "Y" and "M" of "CAYMAN".  
R3/2 left pane.



Variety: Broken 1 in fraction.  
Top row left hand stamp



Variety: Different thickness  
to overprint.

CAYMAN ISLANDS – THE KEY-PLATE PERIOD:

WAR TAX.



Cover with type 17 overprint, dated MR 2 18, to England with 'Jamaica Half-penny' WWI charity label, and John Walker patriotic label.



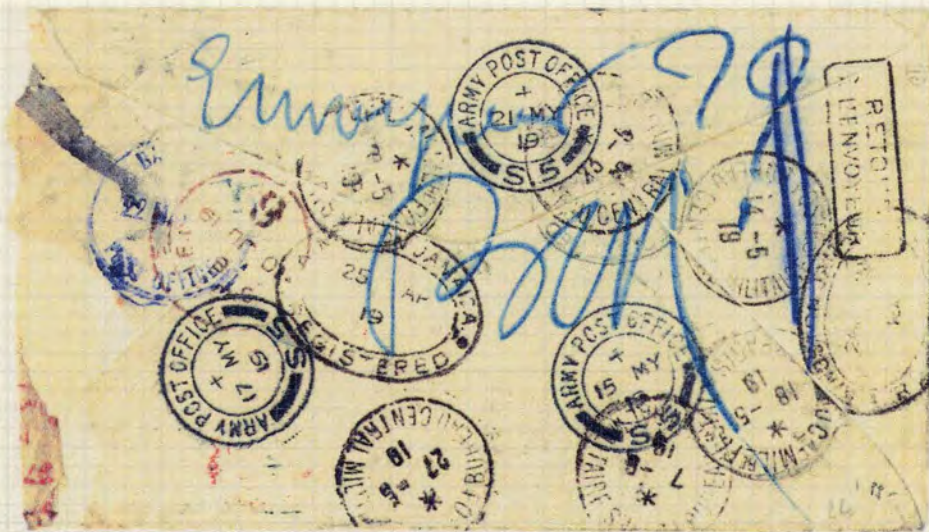
Cover with type 17 overprints, dated AP 26 18, to Scotland with 'Jamaica' WWI charity label.

CAYMAN ISLANDS – THE KEY-PLATE PERIOD:

WAR TAX.



Cover from Georgetown, dated AP 10 19 to France, showing various transit marks and an example of the 'Jamaica Returned Letter Branch' cancel in red, dated 27 JU 19.



Reverse showing 14 transit marks.  
Ex Rew.

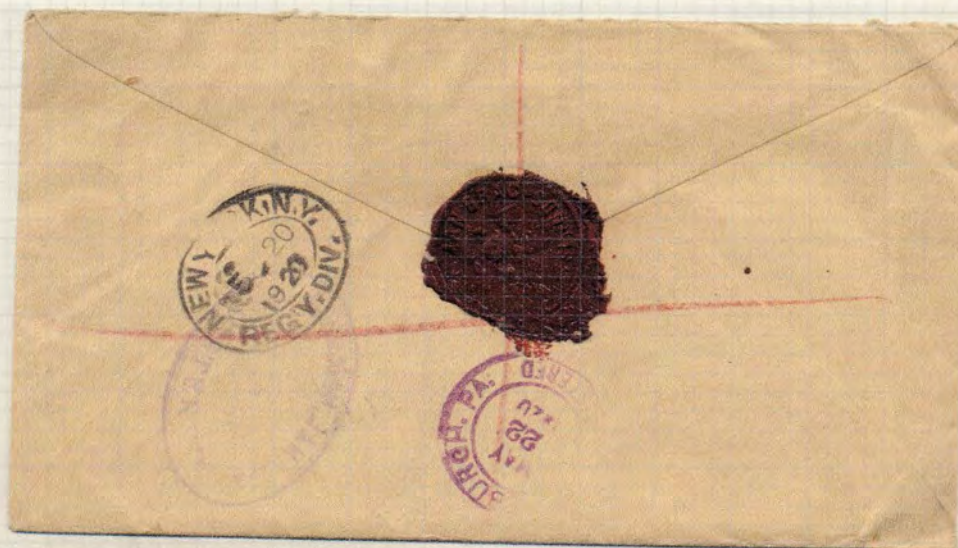


CAYMAN ISLANDS – THE KEY-PLATE PERIOD:

WAR TAX.



Cover from Cayman Brac to Pittsburg, USA with type 2 cancels and type 2 registration etiquette.



Reverse showing example of 'Cayman Brac Cayman Islands' red wax seal.

CAYMAN ISLANDS – THE KEY-PLATE PERIOD:

WAR TAX.

ON HIS MAJESTY'S SERVICE.



Messrs Ewens  
32 Palace Square  
Norwood  
London

GRAND CAYMAN  
R 52452

OHMS envelope cancelled Georgetown MY 13 19 with type 7 registration etiquette.  
Reverse has superb example of the 'Commissioner Cayman Islands' red wax seal.



## CAYMAN ISLANDS:

### KING GEORGE V.

Second Series.

The King George V second series was approved for production, by the copper-plate process in a letter dated 21 October 1920, sent by De La Rue to the Crown Agents.

There are a number of colour variations for some denominations.

The stamps were requisitioned as they were required, with the first requisition being number 119/20 of 3 February 1920.



Master Die Proof, dated on the reverse "26/11/1920"  
Ex Green, Maisel.



2p Carmine trial colour proofs



4½d Blue trial colour proofs.



Because the number of members of the UPU varied as this issue was produced, the number of specimen examples is not constant.

There were 400 examples charged for 3d, 1s and 5s values, 401 charged for the 4d value and 399 charged for the 10s

# CAYMAN ISLANDS:

## KING GEORGE V.

Second Series.



Ex De La Rue archive.



Because the number of members of the UPU varied as this issue was produced, the number of specimen examples is not constant.

There were 401 examples charged for ¼d, ½d, 1d, 2d, 2½d, 6d, 2s and 3s values, 400 charged for the 1½d value and 411 charged for the 3d and 4½d values. There is no information available in the De La Rue 'Private Day Books', regarding quantities overprinted Specimen for the 1s, 5s and 10s values.

# CAYMAN ISLANDS:

## KING GEORGE V.

Second Series.

The second series was printed on two different watermark papers, by De La Rue.

Watermark, Multiple Script CA.



Various shades are evident, although it is only the 6d which has a catalogued shade.

# CAYMAN ISLANDS:

## KING GEORGE V.

Second Series.



The 1/2d Green was ordered on requisition 118/21 of 8 February 1921.

# CAYMAN ISLANDS:

## KING GEORGE V.

Second Series.



### QUANTITIES PRINTED.

3d	26,316
4d	20,320
1s	14,636
5s	6,365
10s	3,815

# CAYMAN ISLANDS:

## KING GEORGE V.

Second Series.



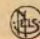
Selection, from both watermarks, with a variety of cancels.



**CAYMAN ISLANDS:**

**KING GEORGE V.**



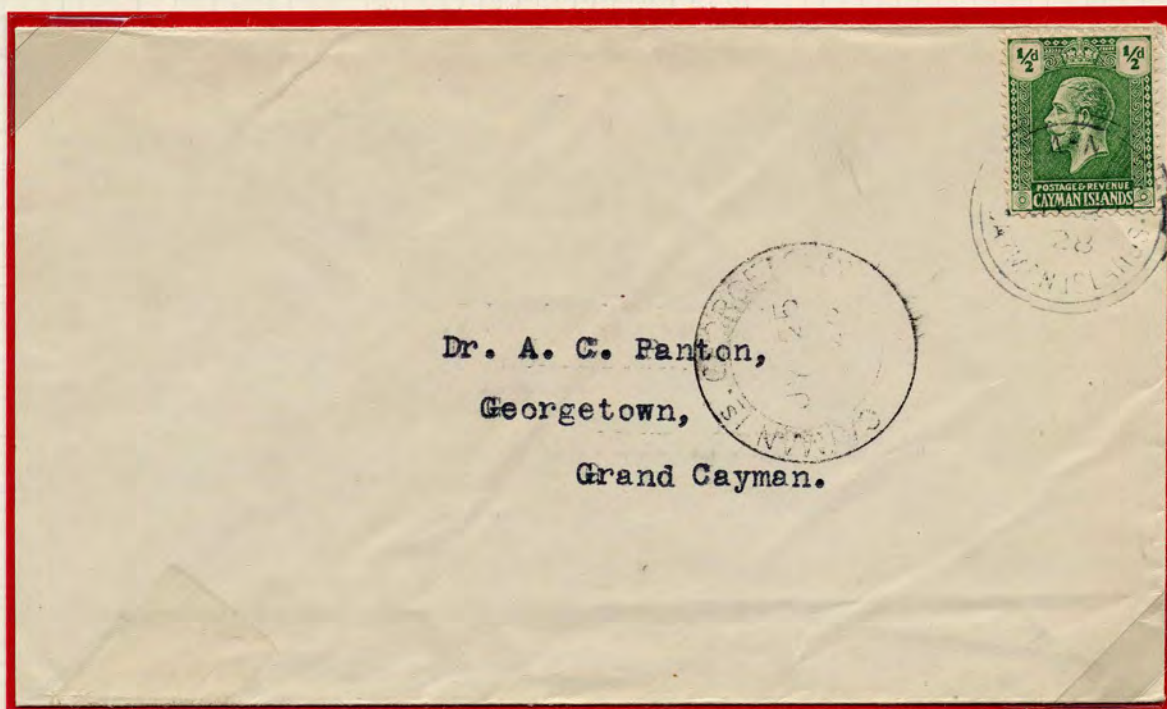
 Central views of George Town



1/4d and 1/2d on picture postcards, used in 1930.

CAYMAN ISLANDS:

KING GEORGE V.



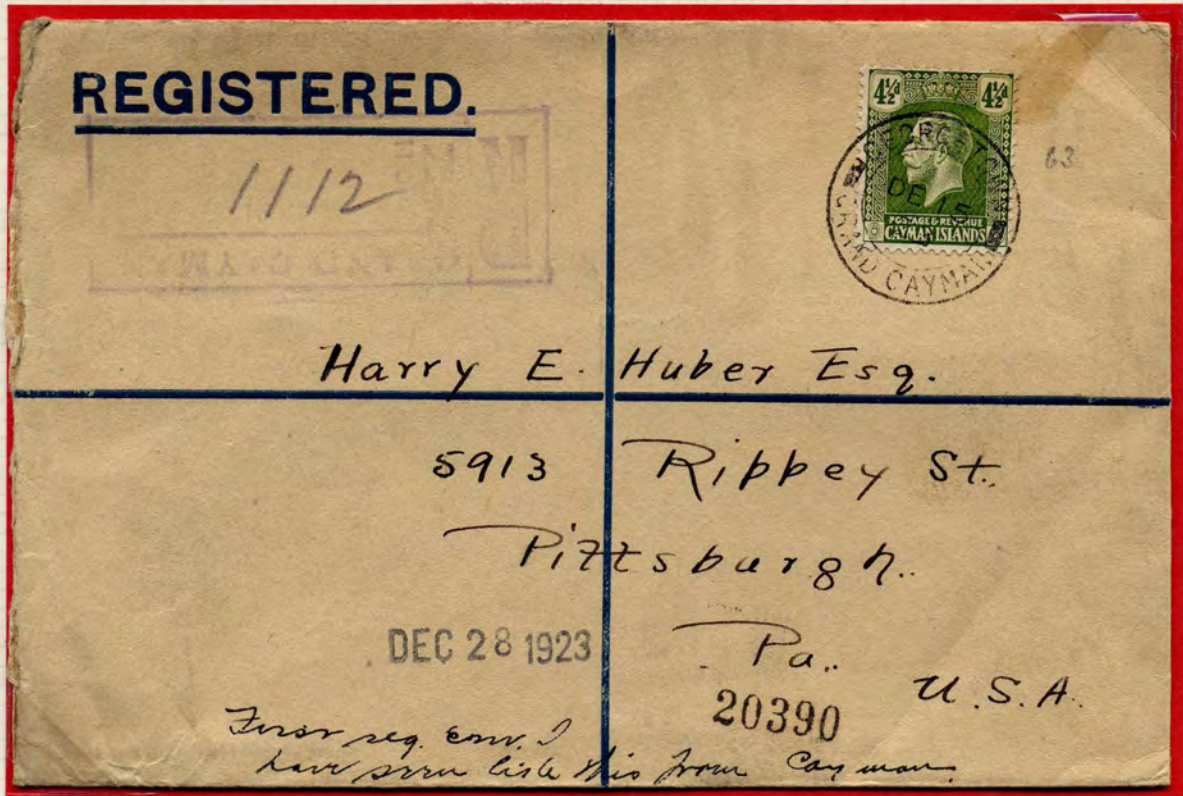
Cayman Brac type 2 cancel on local cover to Georgetown, with arrival Grand Cayman type 6 cancel.



This cover, dated APR 1 1927, addressed to H.H. Hutchings, the Commissioner, has been taxed with the 1922 1d deep carmine red, to pay double the 1/2d deficiency in postage. This cover was on the first sailing of the regular mail ship, the 'S.S. Cimboco'. 'Cimboco' is an acronym for the 'Cayman Islands Motor Boat Company'. Ex Edmonson.

CAYMAN ISLANDS:

KING GEORGE V.



CAYMAN ISLANDS:

KING GEORGE V.

**REGISTERED.**



*Mr P Mercer*

*5 Kingburgh Road  
Newayfield  
Edinburgh St  
Scotland*

231

Size H Formular Registered Envelope, showing Georgetown type 6 cancel and type 10 registration etiquette

# CAYMAN ISLANDS:

## KING GEORGE V.

First Series of Commemoratives.



This set was issued on 5 December 1932 to commemorate the 100<sup>th</sup> anniversary of the founding of the 'Assembly of Justices and Vestry', the Island's legislative body, granted by King William IV in 1832.

CAYMAN ISLANDS:

KING GEORGE V.

Third Series.



Perforated 'SPECIMEN'.

# CAYMAN ISLANDS:

## KING GEORGE V.

Third Series.



The 1½d pair shows the 'ghosting' effect on the reverse, as mentioned in, 'Aguilar & Saunders'.

# CAYMAN ISLANDS:

## KING GEORGE V.

Third Series.



Waterlow & Sons Limited, London Wall, London, E.C.



Waterlow & Sons Limited, London Wall, London, E.C.



Waterlow & Sons Limited, London Wall, London, E.C.

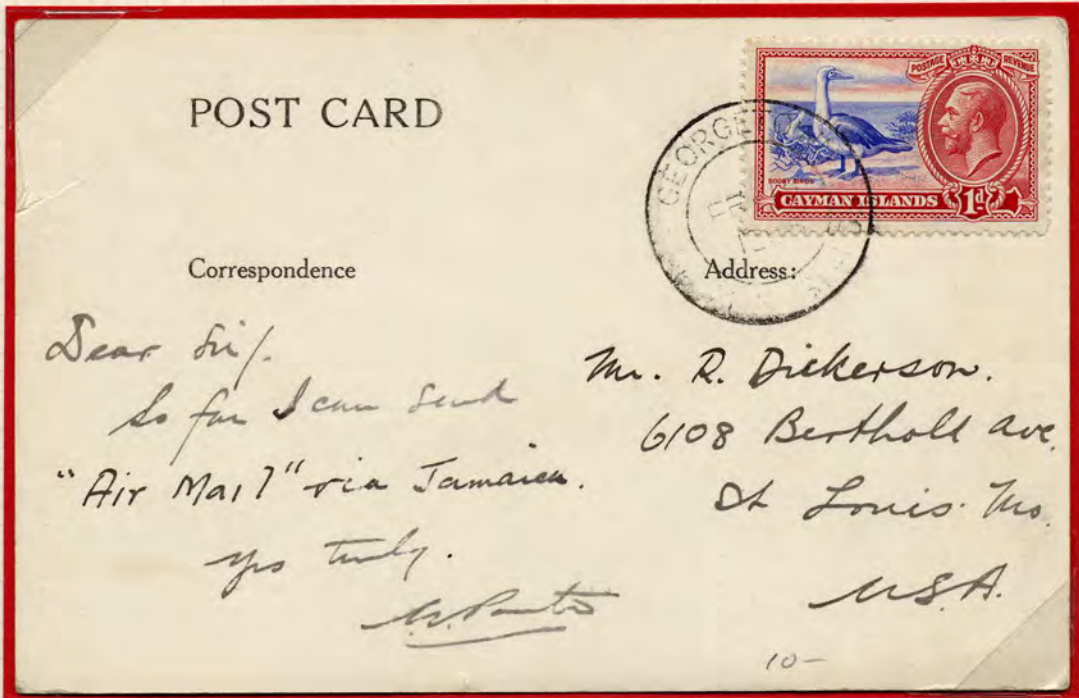
The stamps were printed in sheets of 60, either 12 rows of 5 (horizontal) or 6 rows of 10 (vertical).





3642  
Main Street  
Georgetown.

**CAYMAN ISLANDS: FIRST AIRMAIL.**



Postcard, cancelled Georgetown FE 15 1935, stating that, 'So far I can send "Air Mail" via Jamaica'.



JY 3 1935 'FIRST AIR MAIL Via Jamaica'.