

St. Vincent
Reg. 93/1901.

Colour Scheme.

2/-



5/-



10/-



112.91

Grenada

1902-6 King Edward definitives

Presentation Specimens

1902 Single Crown CA

SPECIMEN



Hand-stamped Samuel type GR4.



The only examples recorded

ex Sussex

Grenada

Broken M in specimen (#41)



1902-6 King Edward definitives

1/2d Purple and green

UPU specimens



Samuel type D12.

Hand-stamped Ultramar



For Portuguese colonies.

ex Messenger

The issued stamps

1902 Single Crown CA

1905 Multiple Crown CA



1905 Multiple Crown CA



1d Purple and carmine

1902 Single Crown CA

UPU Specimens



Samuel type D12.

Broken M flaw (#41)

Hand-stamped Ultramar



For Portuguese colonies.

ex Messenger

1904 MCA Watermark



1902-6 King Edward definitives

2d Purple and brown

Broken M in specimen (#41)



UPU specimens



Samuel type D12.

Hand-stamped Ultramar



For Portuguese colonies.

ex Messenger

1905 Multiple Crown CA



1902 Single Crown CA



1905 Multiple Crown C



2 1/2d Purple and ultramarine

Broken M in specimen (#41)



UPU specimens



Samuel type D12.

Hand-stamped Ultramar



For Portuguese colonies. ex Messen

1902 Single Crown CA



Spaven flaw



#1/3 on left pane.

1905 Multiple Crown CA



1902-6 King Edward definitives

3d Purple and orange

UPU specimens

Broken M in specimen



Samuel type D12.



#41 on pane of 60.

The issued stamps

1902 Single Crown CA



Value tablet in deep orange



Value tablet in orange



1905 Multiple Crown CA



Ordinary paper.



Chalk-surfaced paper.

Grenada

1902-6 King Edward definitives

6d Purple and green

Broken M in specimen (#41)



UPU specimens



Samuel type D12.

Hand-stamped Ultramar



For Portuguese colonies.

ex Messenger

The issued stamps

1902 Single Crown CA



Used at St Andrew's.



1906 Multiple Crown CA

Imperium colour trial



De La Rue used the 6d duty for a wide range of colour trials. These were circulated to clients and potential clients. This particular rather violent colour was never adopted for an issued stamp.

The issued stamps



Chalk-surfaced paper.



Ordinary paper.



Used at Sauteurs.

Grenada

1902-6 King Edward definitives

2/- Green and ultramarine

UPU specimens



Samuel type D12.

Hand-stamped Ultramar



For Portuguese colonies.

De La Rue file specimen



Samuel type D9.

ex Samuel

ex Baillie

The issued stamps

1902 Single Crown CA



Parcel Post cds.

1906 Multiple Crown CA



Grenada

1902-6 King Edward definitives

5/- Green and Carmine

UPU Specimen



Samuel type D12.

1906 Multiple Crown CA



Dated OC 3 08.

1902 Single Crown CA



Dated SP 20 03.

10/- Green and purple

Duty die proof on glazed card



*Grenada used De La Rue's keyplate method, saving it the cost of engraving the monarch's head.
The only duty plates needed were for the three new values, 2/-, 5/- and 10/-.*

UPU Specimen



Samuel type D12.

1902 Single Crown CA



ex Charlton Henry



Dated JY 12 05.



Dated SP 23 08.

1906 Multiple Crown CA

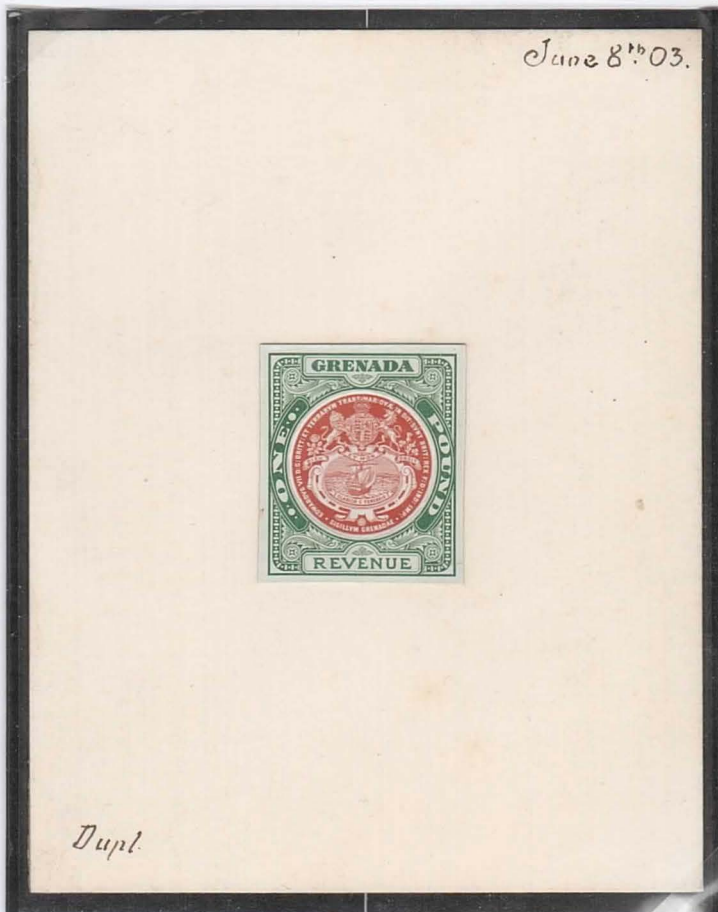


ex Charlton Henry

Grenada Revenues

June and September 1903 essays prepared by De La Rue

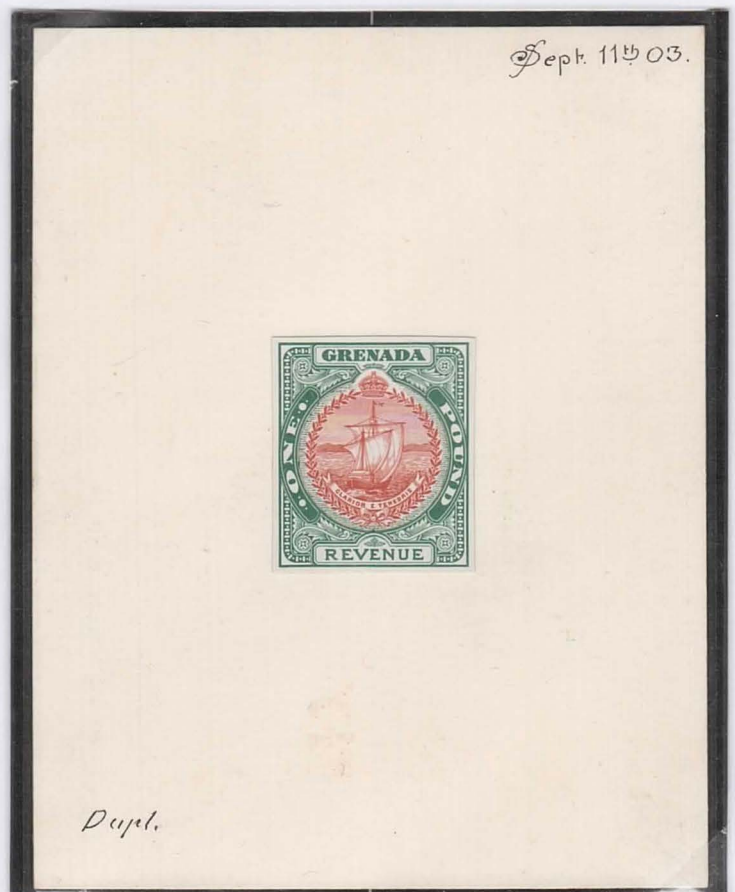
Essays created by pasting a vignette in a green frame similar to that used for the issued stamps.



ex De La Rue archives

ex Bell

This is obviously inspired by the 1903 Antigua Arms issue, with a different inscription and motif.



This later essay, without its inner frame of leaves, crown and ribbon, is close to the final design.

ex Be

**Grenada Revenues
1904 Proofs**

Master die proof of the accepted design



Approved, initialed and dated Sept 16 1904.

Reference examples from the printers archives hand-stamped "Specimen"



*CC watermark dated Nov 1904. The later issue with MSCA watermark dated Dec 1926.
Hand-stamped Samuel type D9. Hand-stamped very rare Samuel type D14.*

Imperf plate proofs



On watermarked thin greyish paper.

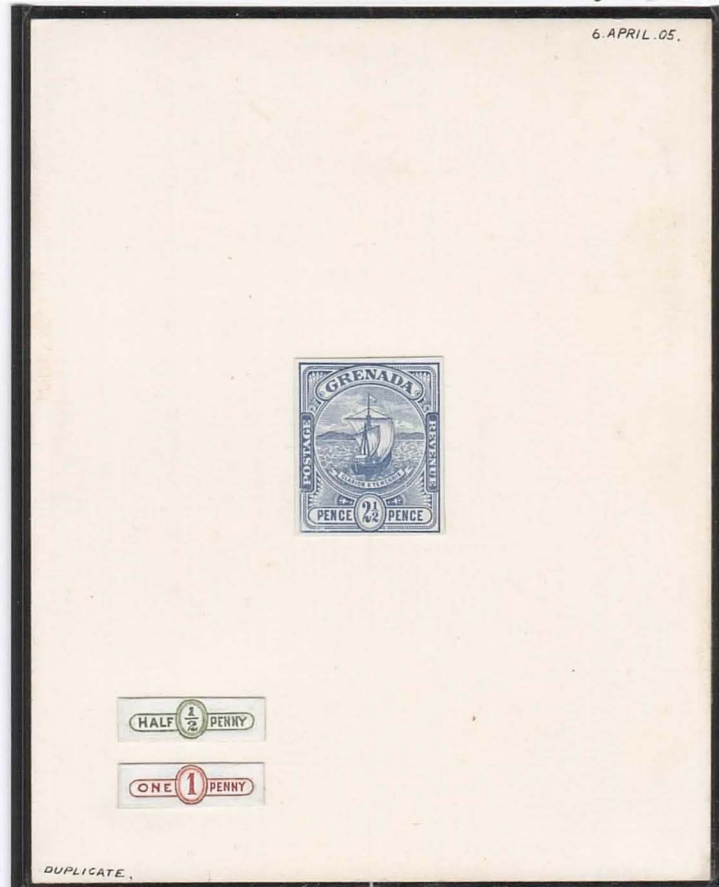
Grenada

1906-11 Badge of the colony

1906 The four lower values 1/2d to 2 1/2d

The four low values for this set were recess printed in 1906, which means that the value tablets were engraved directly onto the plates and no dies were made for them. This contrasts with the higher values issued in 1908 printed by typography using a common vignette and six duty plates.

Essay dated 6 April 1905 with hand-painted tablets for 1/2d and 1d



In 1906 national pride convinced the authorities to adopt new stamps showing the colony symbol.

ex Messenger

ex Walker

Master die proof engraved on thick card



While similar, the size and shape of the value tablets and other details differ from the high values. This proof, ex engraver L V Phillips own collection, has heavy ropes and mast and white waves.

ex R Jones

ex Walker

Grenada

1906-11 Badge of the colony

Approved colour trials from the butchered Appendix Sheet



Approved by W H M(ercer).

ex De La Rue archives

Perf 14 colour trial

The 1/2d value



In the accepted colour for the 2d

ex Duffus

Perf 14 colour trial



In the accepted colour for the 2 1/2d

Similar but deeper blue.

Imperf plate proofs

1/2d Green

UPU specimens



From the mini-sheet of 6.

ex Messenger

Circulated in strips of 5 between 1892 and 1907.

Hand-stamped Ultramar



For Portuguese colonies.

Grenada

1906-11 Badge of the colony

1d Carmine

Colour trial in the issued colour



Imperf plate proofs



From the mini-sheet of 6.

*ex W Taylor
ex Messenger*

UPU specimens



Samuel type D12.



Hand-stamped Ultramar



For Portuguese colonies.



The issued stamps



Watermark inverted and reversed.

The discovery copy



Grenada

1906-11 Badge of the colony

1906 2d orange

Approved colour trial from the butchered Appendix Sheet



The colour trials for the four low values used the 1/2d duty.
Approved by W H M(ercer).

ex De La Rue archives

UPU specimens



Samuel type D12.



Hand-stamped Ultramar



For Portuguese colonies.

Ex Johnson

The issued stamps



Watermark inverted.



Dated Ja 4 06 (EKD?) Watermark inverted and reversed.



Only example recorded

Grenada

1906-11 Badge of the colony

1906 2½d blue

UPU specimens



Samuel type D12.

The issued stamps



Hand-stamped Ultramar



For Portuguese colonies.



Blue.



Ultramarine.

1908 3d Dull purple/yellow Multiple Crown CA Chalk-surfaced paper

Die proof for the vignette plate on glazed card



UPU specimen



Samuel type D12.

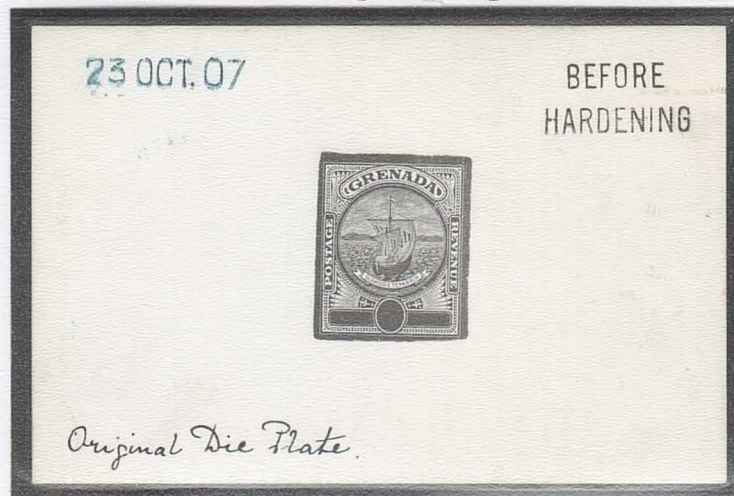
Circulated in strips of 3 after 1907.



1906-11 Badge of the colony

1908-11 The six high values 3d to 10/-

Uncleared progress die proof on regular size glazed card dated 23 Oct 07



The value tablets now have squarer ends than the previous design and the sails black patches.

Die proof of the master die incorporating vignette and surround



Another progress proof showing a white line through the hull, but still black patches on sails.

ex B E Johnson

ex Walker

Master die proof on regular size glazed card dated 2 Dec 07



The final vignette with the black patches on sails removed and whiter waves.

Grenada

1906-11 Badge of the colony

1908 6d Dull purple and purple Multiple Crown CA Chalk-surfaced paper

Die proof for the duty plate on glazed card

UPU Specimen



The pane was set up in ten rows of six, with plate plugs close to each of the four corners.



UPU Specimen



Samuel type D12



1908 1/- black on green Multiple Crown CA Chalk-surfaced paper

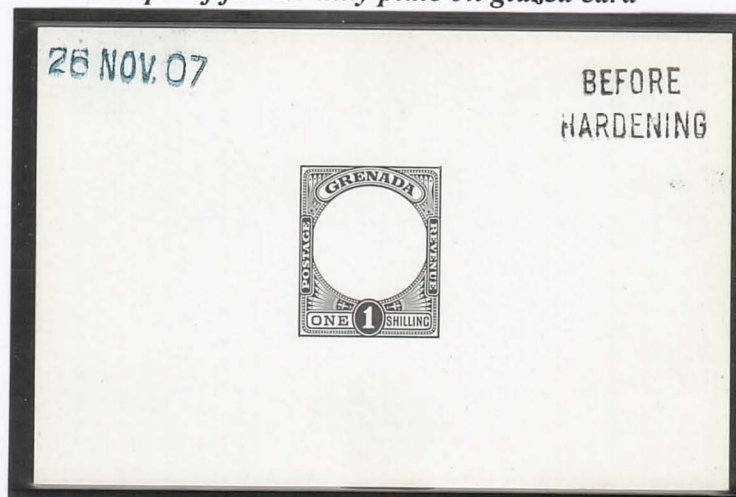
Die proof for the duty plate on glazed card

UPU Specimen

Hand-stamped Ultramar



For Portuguese colonies.



ex Homan

Grenada

1906-11 Badge of the colony

1911 1/- black/green Multiple Crown CA Chalk-surfaced paper

By the time the 1/- needed reprinting in 1911, stocks of the green CA paper had run out.



The 1911 printing has an altogether darker appearance than the 1908 printing.

1908 2/- blue and purple/blue Multiple Crown CA Chalk-surfaced paper

Die proof for the duty plate on glazed card



UPU Specimen



Samuel type D12.

Hand-stamped Ultramarine



For Portuguese colonies.

ex Messenger

The issued stamps

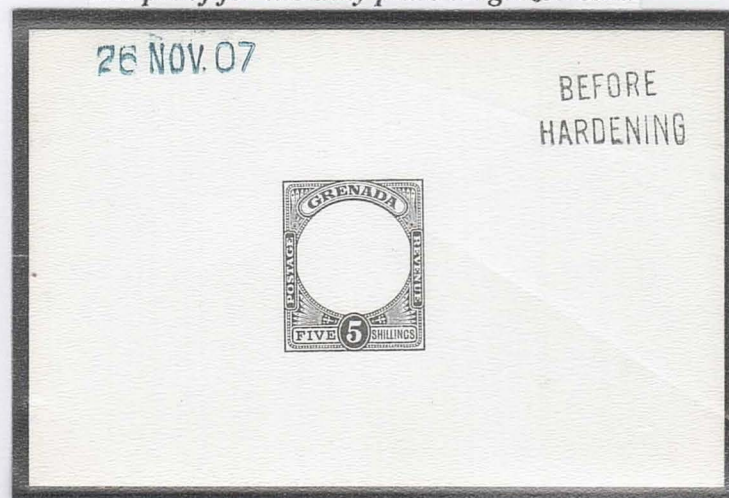


Grenada

1906-11 Badge of the colony

1908 5/- Green and red /yellow Multiple Crown CA Chalk-surfaced paper

Die proof for the duty plate on glazed card



Colour trials in six unadopted colours

None of the colours was adopted for any Grenada value.



ex De La Rue archives

The 5/- duty was used for the colour trials made for the six 1908 values on MCA paper.

The issued stamps

UPU specimen



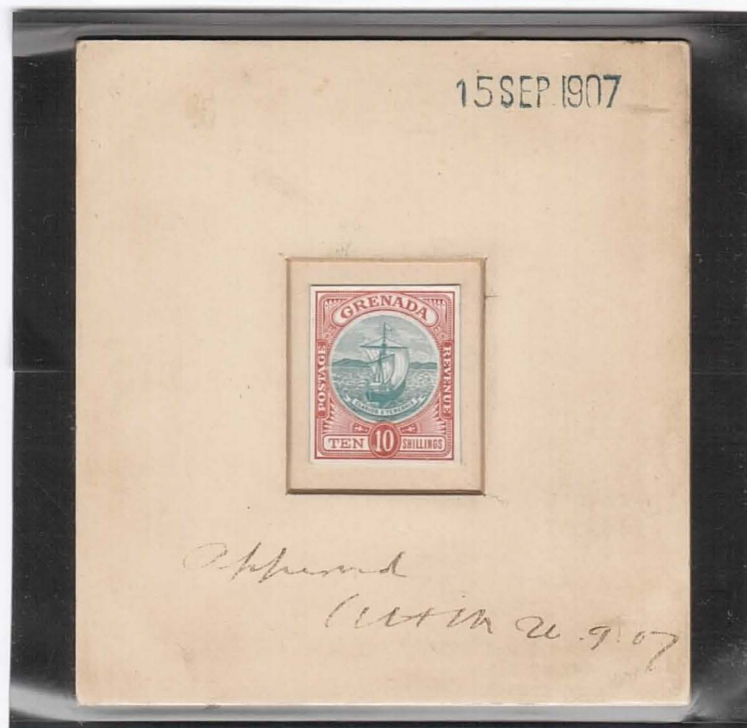
Samuel type D12.



1906-11 Badge of the colony

1908 10/- Green and red/green Multiple Crown CA Chalk-surfaced paper

Hand-painted essay for the 10/- in sunk card



Approved by W H M(ercer) 16.9.07.

ex Messenger
ex Walker
ex Bell

Die proof for the duty plate on glazed card



ex B E Johnson
ex Paynter

Grenada

1906-11 Badge of the colony

10/- Green and red/green

UPU Specimen



Samuel type D12.

By 1908 the numbers of specimens had been reduced to 3 per UPU member.

The issued stamps



Unplated flaw



Major break in the frame below D.

The discovery copy



ex B E Johnson

Only used black records



1908 6d Dull purple
and purple

