

*Dr. Guiana*  
*The great collectors*  
*and their stamps*

3



*1862 local issue*



*1862 1c vertical strip from the right-hand column of the sheet of 24, showing all three types of border.*

*1899 2c on 15c provisional, surcharge inverted*



*ex Webster*

*The unique block with southwest stamp (Row 2/5) having missing stop.*

*Waterlow in the British Caribbean*

*Br Guiana*

*The 1853 ship issue*



*thin paper* 1c Plate proofs *thick paper*



4c Plate proof



Reprint



Plate proof



Reprint

*SG 11  
Cat £1100*



One of the issued stamps

*SG 11  
Cat £5500*

Waterlow in the British Caribbean

The 1860 ship issue



Master Die proof

ex C  
Yax  
Ton

Only recorded exa



Plate proofs



*Waterlow in the British Caribbean*

*Br Guiana*

*The 1860 ship issue*

*Plate proofs in issued colours*



*The 1863 large ships*



*6d in colour on sunk card.*

*Agents*



# The Burrus Collection

The item mounted on this page was purchased from the world-famous stamp collection formed by the late Maurice Burrus of Ste Croix-aux-Mines, France.



Lot No. 104 in the Auction Sale held on 26 NOV 1963 by Robson Lowe Ltd., 50 Pall Mall, London, S.W.1.



*used*

*Papermakers  
Watermark*

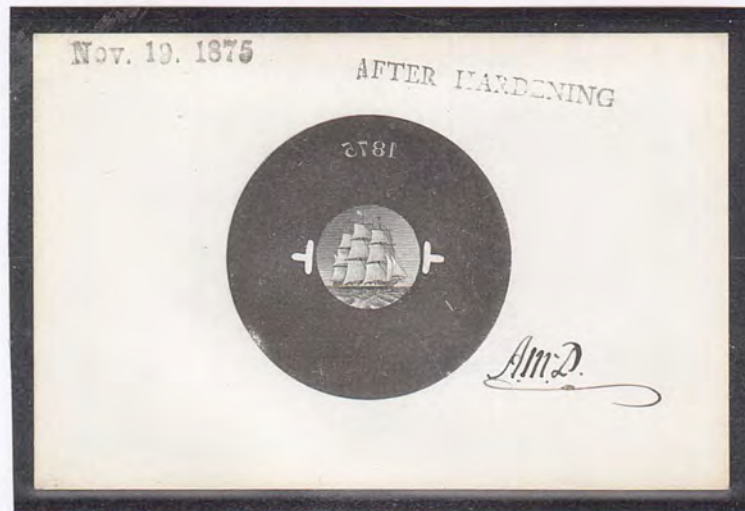
a Rue won the contract for British Guiana stamps in place of Wa

and die proofs of the vignette showing registration marks



Before Hardening Oct 27 1875.

ex K



After Hardening Nov 19 1875, die approved by initials.

ex Ray

*British Guiana  
The 1876 de La Rue definitives*

*Uncleared die proofs of the vignette*



*Early state 11 Nov 1875.*



*Later state 16 Nov 1875, some details touched up.*

*Die proofs of the frame*

*Imperf colour trial  
with value omitted*



*Perf 12 colour trial  
with value omitted*



*ex Frazer*

*Imprimatur*



*In the issued colours.*



*Master die proof in pale violet.*

*Imprimatur*



*ex Townsend*

**British Guiana**  
**The 1876 De La Rue issues**

*On joining the UPU in 1877 Br Guiana had to circulate examples of its stamps to UPU members. It did this on 1 October 1879, and decided for security reasons to provide examples overprinted or perforated "specimen" in line with Great Britain's practice at the time, although other countries provided normal unused examples. In total 80 examples of each value were circulated.*

**SPECIMEN**

**Samuel type BG2**

**CC watermark**



*The overprints were applied diagonally in order to provide space for the full overprint.*

*The 1876 48 cents is unrecorded with this hand-stamp and the 48 cents stamps in the UPU collections are all the 1866 issue in perf 10. Bendon suggests that unused stocks of the earlier stamp were still being sold in the Post Office in 1879 and the 1876 stamp had not yet been issued.*



*The 1866 48 cents perf 10 included in the 1879 UPU circulation.*

**Overprint diagonal inverted**





*British Guiana  
The 1876 de La Rue definitives*

*Hand-stamped "cancelled" with Samuel type D6 overprint.*

CANCELLED



*Not recorded with this handstamp by Samuel*

*British Guiana  
The 1876 de La Rue definitives*



*1877 4c perf 12½*



*British Guiana*

*The 1876 de La Rue definitives*



*Watermark inverted.*



*Watermark inverted.*



*Bogus POSTAGE overprint.*



*British Guiana  
The 1876 de La Rue definitives*



*Watermark inverted.*



*Watermark inverted.*



*1877 4c perf 12½*



*1877-9 perforation changes*

*1877 4c perf 12½*



*1879 1c perf 12½x14*



*Used at Leguan.*

*British Guiana  
The 1878 Provisionals*

*Provisionals paying the 1c rate*

*17 Apr 1878*



*30 Aug 1878*



*"Official" obliterated.*

*6 Nov 1878*



*Two vertical bars*



*23 Nov 1878*



*"Official" obliterated.*

*Provisionals paying the 2c rate*

*17 Apr 1878*



*23 Nov 1878*



*23 Nov 1878*



*"Official" obliterated.*

*The use of official stamps was discontinued in June 1878.*

*British Guiana  
The 1878 Provisionals*

*Provisionals paying the 1c rate*

17 Apr 1878



30 Aug 1878



*"Official" obliterated.*

30 Aug 1878



*"Official" obliterated.*

6 Nov 1878



*In early 1878, following a shortage of 1c and 2c stamps, a range of provisionals were issued.*

23 Nov 1878

*The rare 1c with  
one horizontal bar*



*"Official" obliterated.*



*No mint copies are known. From column 6.*

*Used at Leguan. "Official" obliterated.*



*Provisionals paying the 2c rate*

17 Apr 1878



*"Official" obliterated.*

23 Nov 1878



*"Official" obliterated.*

23 Nov 1878



*Waterlow in the British Caribbean*

*Br. Guiana*

*Waterlow printings cancelled "Specimen"*



*1875-6 Perf 15*

*Small seriffed capitals*



*Imperf*



*1866 Perf 10, circulated by the UPU in 1879*



*ex Great*

*1863 Perf 12 1/2*

*A unique variety, handstamped "5"*

*British Guiana  
The 1881 Provisionals*

*The 28 Dec 1881 Issues*

*1 on 48c Heavy "1"  
with thick serif.*



*Missing bar*



*9,900 Overprinted*

*1 on 12c official Serif missing and  
O sloping (pos.12)*



*Thick bar.*



*Thin bar.*



*Heavy "1" with thick serif  
From first column.*

*2,438 overprinted*

*There are 40 (10x4) stamps on each sheet. 16 random positions show the thin sloping "O"*

*1 on 48c official*

*Straight serif*



*(Row 2/2)*

*"1" over 1*

*The 48c cents official stamp is not known uncharged.*

*On the later provisionals  
"Official" was not obliterated.*



*"1" over F*



*1,800 overprinted*



*British Guiana  
The 1881 Provisionals*

*The 21 Dec 1881 Issues*



*Thin bar.  
From column 6.*



*11,000 overprinted "1".*



*Thick bar.*



*Thin bar.*



*Thick bar.  
Digit set to right.*

*10,132 overprinted "2".*



*On the 2c, the final stamp in each row has a different font.*



*Imperf between  
stamp and margin*



*Thin bar.*

*Two horizontal bars*



*Thick bar.*

*Extra bar in red*



*Extra bar in red*



*Pos.51-2, 57-8, positioned by the sloping 2 on pos. 52.*

The 1870 1c overprints were heavily bought by speculators, so 60,000 of the 1 cent and 40,000 of the 2 cents were printed. Two basic settings of each value are known, one in four rows of three stamps and the other in six rows of two stamps. On each pane of 12, five units show a three-masted ship and the other seven units a two-masted ship. In addition each ship is surrounded by a frame of crosses which have different spacing and these spaces can be used to identify the position of each stamp in the pane of 12. Another major variety is a large 2 in 2 cents on the 2c value. For the 1 cent value, three different printings can be distinguished and for the 2 cents four printings. Some plate positions can be separately identified as unique to an individual printing but there are others that cannot be plated in the absence of additional plating information provided by adjoining units.

*1 cent, the first setting, four rows of three  
Reconstructed pane of 12*



British King  
Sheet 11:

#9 with seal

*In the first setting the three masted ship appears on positions 1, 2, 3, 4, 9 and 10.  
All the panes of the first setting of both values were split into two blocks of six prior to sale.*

*British Guiana*  
*The 1882 Baldwin Issue*

*1 cent, the first setting, four rows of three*

*Reconstructed pane of 12*



*Used block of six (#7 to 12), pair and singles.*

*12 Jan 1882*



*Used locally in Georgetown, from second row in the setting (Pos. 3-6).*

*9 January was the date on which these stamps were issued.*

*British Guiana*

*The 1882 Baldwin Issue*

*1 cent, the second setting, six rows of two*

*The fifth printing*



*Mint sheet of 12.*



*Misperforated so no lower set of crosses.*

*Unit 8, 5<sup>th</sup> or 7<sup>th</sup> printings.*



*Used sheet of 12.*

*The fifth printing from the second setting shows the three masted ship on units 1, 2, 4, 5, 6 and 10. This printing can be separated from the seventh printing because unit 7 has a serif at the base of the 1.*

1 cent, varieties of the second setting

Fifth printing

Imperf between horizontal pair



Vertical perfs not printing (from row 2 of printing 5).

Specimen perforations omitted



R.M. Mung 117

Major offset on reverse



Unit 12, fifth or seventh printing.

ex Townsend

Specimen double

Straight serif below 1



Unit 7 on fifth printing.



Unit 8  
R.M. Mung  
Says 11

Specimen perforations omitted

Straight serif below 1



Unit 7 on fifth printing

Ex Brassler

*British Guiana  
The 1882 Baldwin Issue*

*1 cent, the second setting, six rows of two*

*Specimen sloping to South-east*



*From the right-hand column (unit 2).*

*18512*



*Units 1 and 3 from the fifth or seventh printing.*

*Specimen sloping to North-west*



*From the left-hand column (fifth printing unit 7).*



*Units 7-10 from the fifth printing with serif at foot of 1 on unit 7.*

*1 Feb 1882*



*Used from Philadelphia to Georgetown at the single 2c rate.*

*Units 11 and 12 from the fifth printing (identified by the pattern of crosses on unit 12).*

*Ex Townsend*

*British Guiana  
The 1882 Baldwin Issue*

*2 cents, the second setting, six rows of two*

*Major offset on reverse*

*Obverse(photocopy)*



*Reverse*

*Unit 4, fourth or sixth printing.*

*ex Townsend*

*Pale spot on hull*



*Unit 11, sixth printing (small 2).*

*Specimen perforations omitted*



*Unit 3, sixth printing.*



*Units 5-8 sixth printing.*



*Units 5-8 sixth printing.*

*24 Jan 1882*



*Local cover from Georgetown to Enmore (rare type 2 Enmore arrival on face).*

*Ex Brassler*

**British Guiana**  
**The 1882 Baldwin Issue**

*2 cents, the first setting, four rows of three*

The size of the specimen perforation (previously used to cancel the 1867 48 cents ship adhesive) meant it had to be applied sideways to accommodate all the letters. On the first setting it slopes to the north east and on the second to the southeast. In the first setting, the stamps in the second and fourth rows are inverted whereas in the second setting all the stamps in the left hand column have the specimen inverted, while in the right hand column it is upright. Each of these characteristics helps to identify the different settings, but there are many isolated stamps that cannot be allocated to one printing with any certainty.

Whereas the first setting of the 1 cent only had one printing, and only one major value tablet variety (the serifed 1 on unit 7), four of the twelve 2 cents stamps show a smaller 2 making it is much easier to plate.

*The first printing*

*The third printing*



*Import of 1882*

*Stamp raised*

*64*

*46*

*13*

*54*

*38*

*43*

*54*

*843 3rd 624*

*58*

*75*

*3*

*44*

*22*

*35*

*76*

*44*

*BRITISH Imp*

*H shell*

*H shell*



*On this first printing, the 2 is small on units 6, 7, 8 and 12.*

*On the third printing the 2 is small on units 7, 8, 9 and 12.*

*Two rejoined blocks of six.*

*The two units that identify the different printings are 6 and 9.*

*Pos - 1 very mixed block 2 and 3*

*Vertical mixed post*

*with 1882 mixed better set + left on 12*



*British Guiana  
The 1882 Baldwin Issue*

*2 cents, the first printing, four rows of three*



*Two rejoined blocks of six.*

*As with the 1 cent denomination, there are six two-masted and six three-masted ships in each printing. On each of the first settings the three masts are on units 1-4 and 9-10.*

*The third printing, four rows of three*



*First or third printing unit 12.*



*Units 7-12 (units 9 and 10 with three masts).  
The small 2 on unit 9 identifies this as the third printing.*



*Third printing unit 6.  
Large 2 so third printing.*

*BRITISH long  
H short*

British Guiana

The 1882 Baldwin Issue

2 cents, the second setting, six rows of two

The fourth printing

Specimen perforations omitted



Unit 10 (fourth or sixth printing).

Pale spot on hull



Unit 11, fourth printing (large 2).



Unit 5 (fourth or sixth printing).

raised steps on 6+8



Specimen perforations omitted



Fourth printing unit 6.



Unit 1, fourth or sixth printing.



Unit 10 (fourth or sixth printing).

The fourth printing has four units that differentiate it from the sixth. Units 6 and 12 have different cross placements. On unit 3 the 2 is small and on 11 it is large, while the sixth printing is the reverse.

The sixth printing

LR  
66  
66  
44  
3  
85  
35  
42  
55  
33  
43  
54  
56  
42  
34  
ST  
65



Mint sheet of 12.

LR  
14  
22  
36  
64  
13  
55  
57  
37  
45  
76  
12  
44  
77  
68  
85  
46  
41



Used pair, block of four and block of 6.

The sixth printing can be separated for the fourth by the small 2 not large on unit 11 and a large not small 2 on unit 3. On both printings unit 11 shows a pale patch at the centre of the hull. This defect is not evident on any unit from the first setting.

SPECIMEN  
Samuel type BG3

CC watermark examples perforated "specimen"



Samuel states that all CC values to 24 cents were circulated with specimen perforations to the UPU. However Bendon, after consulting many UPU collections, lists the 12 and 24 cents only.



This 1866 48 cents perforated "specimen" is present in several UPU collections.

Post-1882 set perforated "specimen"



Not recorded by Samuel.

CC watermark

CC watermark examples



The five low values have CA watermark so this must have been a presentation set.  
The 96 cents has not been recorded with this specimen perforation.

*British Guiana  
The 1876 De La Rue issues*

*1882: change to CA watermark*

*Imperf plate proofs*



*Gummed and watermarked single CA.*

*The paper with single CA watermark replaced that with CC watermark on 29 June 1881.*

*Presentation specimens  
Not a UPU distribution*

**SPECIMEN.**  
*Samuel type BG4*



*Not recorded by Samuel on CA watermark.*



*ex Latt*

*This set must have been made after 1882 as the four low values have the CA watermark.*

*The 96 cents has not been recorded with this hand-stamp.*

**SPECIMEN**

*De La Rue file specimens*



*No specimens for the CA watermark set were circulated to UPU members as they had received the CC set. These two from the De La Rue archives are the only ones known with this handstamp.*

*British Guiana  
The 1876 De La Rue issues*

*The 1882 printings with watermark changed to CA*

*The issued stamps*



*In 1882 stocks of the low values ran out and new printings were ordered. They can be identified by the CA watermark introduced in 1881.*

*Watermark varieties used*



*watermark inverted*

*First example recorded*



*watermark reversed*



*watermark reversed*

*British Guiana  
The 1890 provisionals*

*On 15 July 1890 a series of 1 cent stamps were created by overprinting four 1888 high values. Townsend and Howe suggest this was done to use up reserve stocks before their gum dried up.*

*Distributed by the UPU*



*As the overprints were performed by the local PO in Georgetown and not by De La Rue in London, the stamps circulated for UPU purposes had no specimen overprint. However, these three can be distinguished as specimens because of the Angolan receiving authority hand-stamp.*

*The issued stamps with double overprints*



*On \$2.*



*On \$3.*



*On \$3.*



*Large "4" from column 2.*



*On \$4.*



*On the second column of the \$4 value the "4" is larger than on the other five columns.*

*Waterlow in the British Caribbean*

*Br Guiana*

*1931 centenary of Union*



*Only recorded example*

*Die proof of the 1c in black*



*Waterlow die proof in the issued colour.*



*The issued stamps.*



*Waterlow in the British Caribbean*  
*Br. Guiana*

*Centenary of Union 1931*



*Die proof in blue of the 2c.*



*The issued 2c was in brown.*

*Waterlow in the British Caribbean*

*British Guiana*

*Centenary of Union 1931*



Two Die proofs of the head of George V mounted on card. The right head, struck on 9.4.31, is the portrait used for the 1931 Centenary set, and subsequently for eight values of the 1934 definitives. The left head, struck on 15.10.31, was taken from the same Die, 13113 and used for the 1932 Antigua Tercentenary set

*1934 definitives*



*Die proofs in black on thin paper*

*Waterlow in the British Caribbean*

*Br. Guiana*

*Sample stamps with Waterlow punch holes*



*Sample stamps with Waterlow punch holes*

*Waterlow in the British Caribbean*

*Br. Guiana*

*Sample stamps with Waterlow punch holes*



*Sample stamps with Waterlow punch holes*

Br Guiana  
1934-51 3c value.

*Crown missing in MSCA watermark.*



PF cert

ex Rubin

200 622



RPS cert

*The crown is absent across the join of the two stamps in column 7.*

*British Guiana  
The 1875 Officials*

*Block showing papermaker's watermark*



*On the 1 Cent the word Official is taller than on the other values. Most of the overprints are 16mm in length but on this block the top three stamps in the right-hand column are 17 mm long.*

*"O" missing*



*17 mm overprint.*



*Overprint reads "FFICIAL".*



*O slanting.*



*ex "Great"  
ex Frazer*



*O upright.*

*With the exception of the 1 cent, the Officials are be found with upright or slanting "O". On this*

*Colour trial*



*ex Townsend*

*Reference copies from the printers' archives*



*The issued stamps*



*ex Hind*

*Ex Sovereign*

*These stamps all have CC watermark. The officials were valid for postal use until 1879.*

*Prepared for use but never issued*



*ex Webster  
ex Frazer*

*British Guiana  
The 1881 Provisionals*

*28 December 1881 The "2" surcharge on unissued 24c official stamps  
The 24c overprint setting was the same as the 12c with five positions showing an italic "2".*



*Traces of doubling on all four stamps.*



*"2" double.  
Thick bar.*



*Thin bar.*



*2 below Official*



*Thin bar.*



*Thick bar.*



*6,000 issued.*

*28 Dec 1881 Overprint on the 1875 24c Official*



*On every second stamp the O of Official slopes to left and the 2 overprint slopes to right. 1,276 issued.*



*British Guiana  
The 1881 Provisionals*

*28 December 1881 The "2" surcharge on unissued 24c official stamps*

*The two types setenant*



*Row 7 pos, 3 and 4.*

*Several positions in the overprint forme have an italic "2". Research by the author has established their presence on 5 positions in each pane (row 7 #2, 4, 5, 6 and row 8 #1).*



*From rows 7 and 8.*

*One of both types*

*The italic 2*



*2 far below Official*



*British Guiana  
The 1881 Provisionals*

*28 December 1881 The "2" surcharge on unissued 12c official stamps*

*Several positions in the overprint form have an italic "2". Research by the author has established their presence on five positions in each pane (row 7 nos 2, 4, 5, 6 and row 8 no 1).*



*Italic 2.*



*The italic "2" on row 7/2 and 8/1*



*Italic 2.*

*The use of official stamps was discontinued in June 1878. Several sheets of the 1876 12c and 24c definitives had been overprinted official but never released. All but one sheet of each value were overprinted 2 and the value tablet obliterated.*



*Thin bar.*



*The italic "2" on row 7/2  
Row 7 pos 1-3*



*Thick bar.*



*Double overprints*

*One of both types*



*Row 7/1*

*6,360 issued.*

*British Guiana  
The 1888 Revenue issues*

*In 1888 the Colonial legislature approved new stamp duties, so there was an urgent need for new revenue stamps. De Le Rue replied on 12 July 1888 that it would take ten weeks to prepare the new stamps, but that they could supply a temporary series within one month by overprinting "revenue" and the various duties on an 1876 postage plate. The overprint plates were priced at 3 guineas each. On 22 Sept the revenue stamps were legalised for postal use.*

*Imprimaturs of the cents values*



*Flat "6" from column 6.*

*ex Dale-Lichtenstein*

*No other examples recorded*

*British Guiana  
The 1888 Revenue issues*

*Variety large "4".*



*On each stamp in the third column the 4 is enlarged.*



*Middle "E" in "revenue" malformed.*



*On each stamp in the fourth and sixth columns the top of the "6" is flat.*

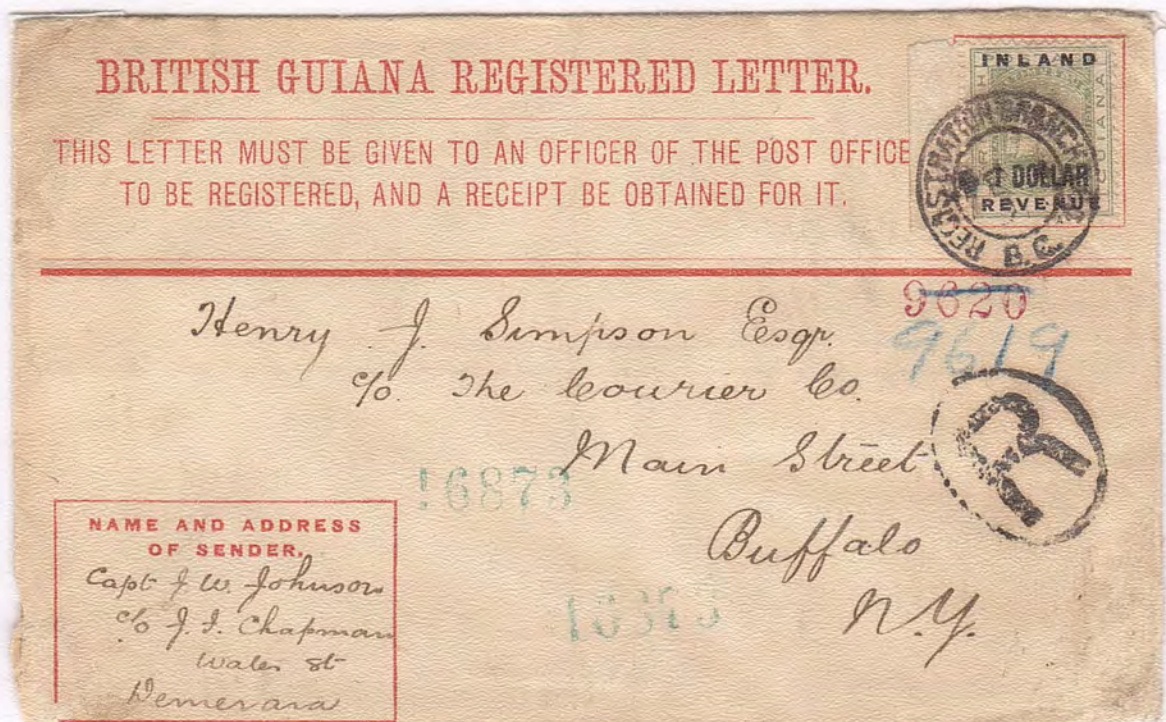
*The dollar values*



British Guiana  
The 1888 Revenue issues

The dollar values

24? Feb 1891



The rare \$1 on a registered cover to Buffalo, probably overfranked but appears commercial.

Variety large "4"



This variety appears on all the stamps in the second column.

10 Dec 1896



Philatelic usage of three high values registered to London.

*British Guiana*

*The keyplate revenues*

*1888 values at \$2.40 to the £1*



*MCA watermark*



*On CA paper.*



*MCA watermark*



*CA watermark*

*Not recorded by Barefoot with this watermark.*

*The 1911 values in round \$s*

*Hand-stamped "specimen" "ex the printers' archives*



*Samuel type D9*



*Not recorded by Barefoot.*

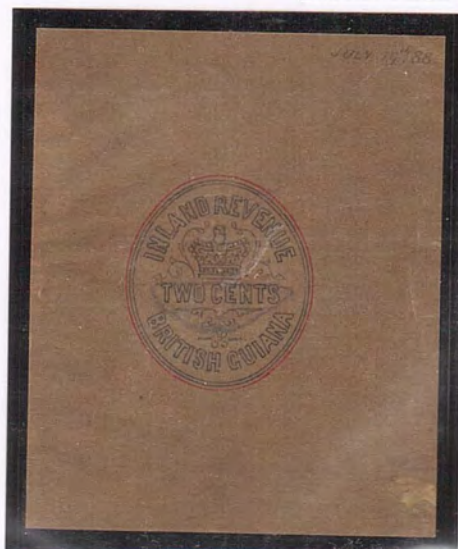
*ex de la Rue archives*

*The issued stamps*



*Hand-drawn essays for embossed  
revenues on thin tracing paper*

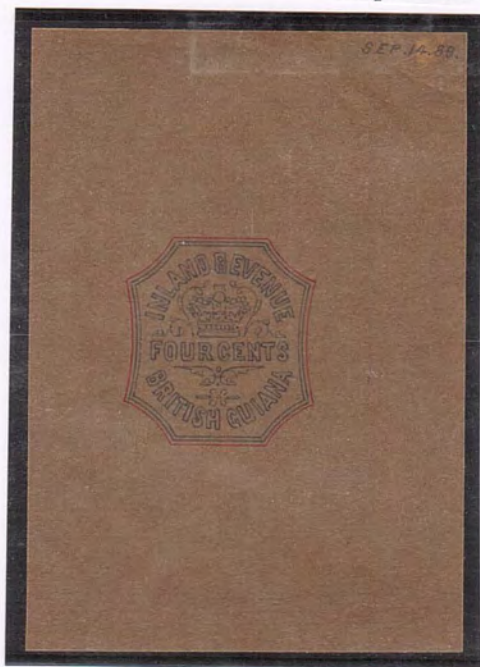
*Jul 19<sup>th</sup> '88*



*2 cents*

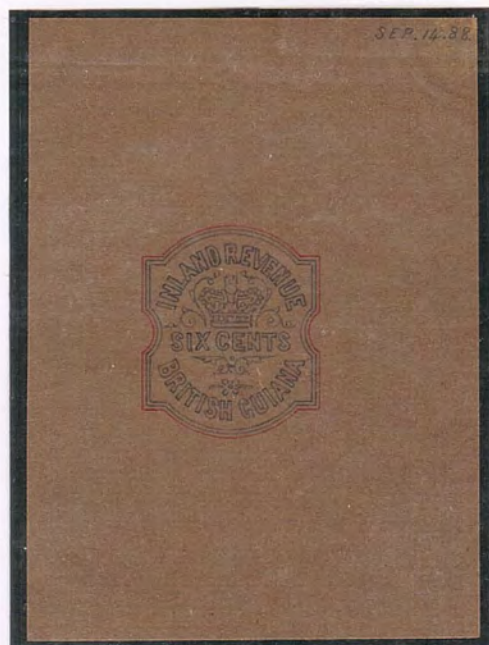
*No such embossed stamps were issued.*

*Sep. 14.88*



*4 cents*

*Sep. 14.88*



*6 cents*