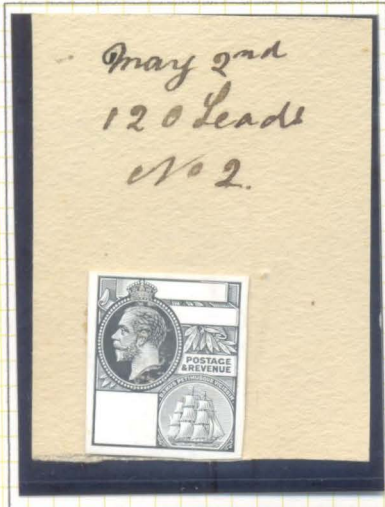


British Guiana

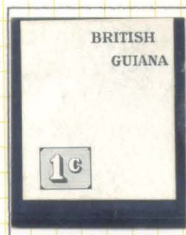
In 1913 it was decided to celebrate the accession to the throne of King George V by issuing a new set of definitive stamps. For the first time in its history, British Guiana wanted a design which incorporated the portrait of the monarch as well as the arms of the colony.



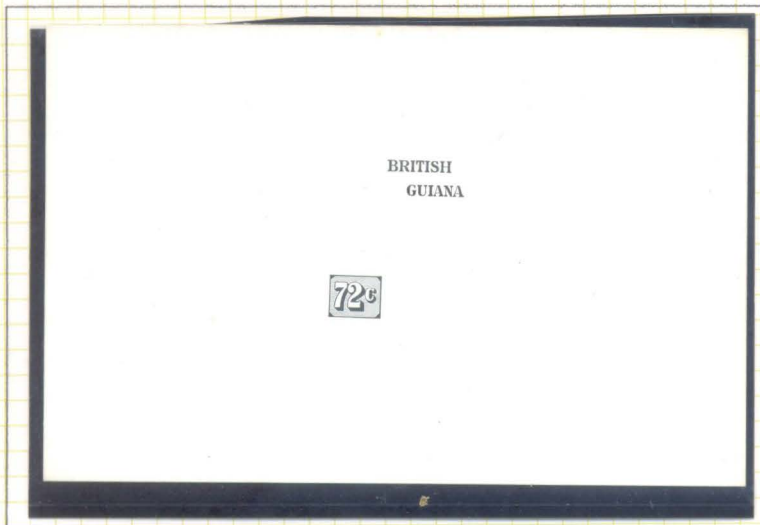
Master Die proof of the Key Design with blank value tablet and colony name in black on card. Marked 'May 2nd 120 Leads No 2'. Ex-De La Rue archives.



Die Proof of the 1 cent Duty Plate stamp sized in black on white card.



Die Proof of the Key Design dated '3 OCT 12' and marked 'BEFORE HARDENING' in black on white card.



Die Proof of the 72 cents duty in black on white card.

British Guiana

1913-21 Perf. 14 Wmk. Mult. Crown CA



SPECIMEN copies of all the Wmk. Mult. Crown CA stamps.
All overprinted in black except the 4 cents and the 96 cents on
pale yellow paper, which were printed in red.

British Guiana

1913-21 Perf. 14 Wmk. Mult. Crown CA



British Guiana

Plate Blocks from the 1913-21 issue watermarked Multiple Crown CA.



1 cent yellow-green, Plate 1.



2 cents carmine, Plate 1, with Sheet No. '033'.



2 cents scarlet, Plate 2.



4 cents brown and bright purple, Plate 2.

British Guiana



A Plate 1 corner pair of the
5 cents bright blue.



A Plate 2 corner block of
four of the 5 cents
bright blue.



A Plate 1 corner block of
four of the 6 cents
grey and black.

British Guiana



A Plate 1 corner block of four of the 12 cents orange and violet.



A Plate 2 corner block of four of the 12 cents orange and violet.



A Plate 1 corner block of four of the 24 cents dull purple and green, showing Sheet No. '034'.

British Guiana



48 cents, Plate 1, showing Sheet No. '007'.



60 cents, Plate 1



60 cents, Plate 2



96 cents, Plate 1,
showing Sheet No. '116'.

British Guiana

1921-27 Perf. 14 Wmk. Mult. Script CA



SPECIMEN copies of all the Wmk. Mult. Script CA stamps.
All overprinted in black except the 48 cents and the 96 cents,
which were printed in red.

British Guiana

1921-27 Perf. 14 Wmk. Mult. Script CA



British Guiana

Plate Blocks from the 1921-27 issue watermarked Mult Script CA.



1 cent green, Plate 1, showing Sheet No. '078'.



1 cent green, Plate 2.



2 cents rose-carmine, Plate 1.



2 cents rose-carmine, Plate 2.

British Guiana



2 cents violet, Plate 1, showing Sheet No. '059'.



2 cents violet, Plate 2.



4 cents brown and bright purple, Plate 1, showing Sheet No. '083'.



4 cents brown and bright purple, Plate 2.



6 cents bright blue, Plate 2.

British Guiana



12 cents orange and violet, Plate 1,
showing Sheet No. '068'.



12 cents orange and violet, Plate 2.

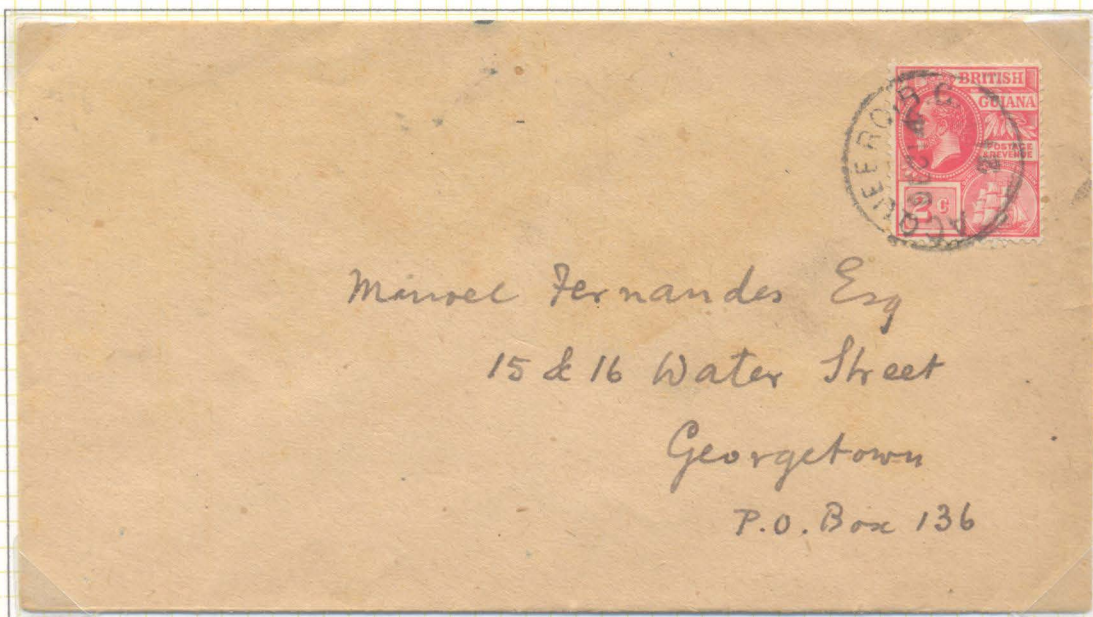


Plate 1 pair of the 24 cents
dull purple and green;
this plate is not recorded by
Townsend & Howe.



24 cents dull purple and green, Plate 2.

British Guiana



A local cover with a 'ACQUEERO' datestamp (T&H Type 15c, Sub-type E) and dated 14 December 1921. This mark is rated as scarce.



A postal stationery envelope (H&G B6) registered and addressed to London with a 'POTARO XI MILE' datestamp (T&H Type 15a, Sub-type E) and dated 8 June 1923. This mark is rated as scarce.

British Guiana



A mourning cover addressed to Canada with a 'RELIANCE' datestamp (T&H Type 20) and dated 29 June 1915.



A Montgomery Ward cover with a 'T.P.O. E.C. RLY' datestamp, dated 23 October 1919.

British Guiana

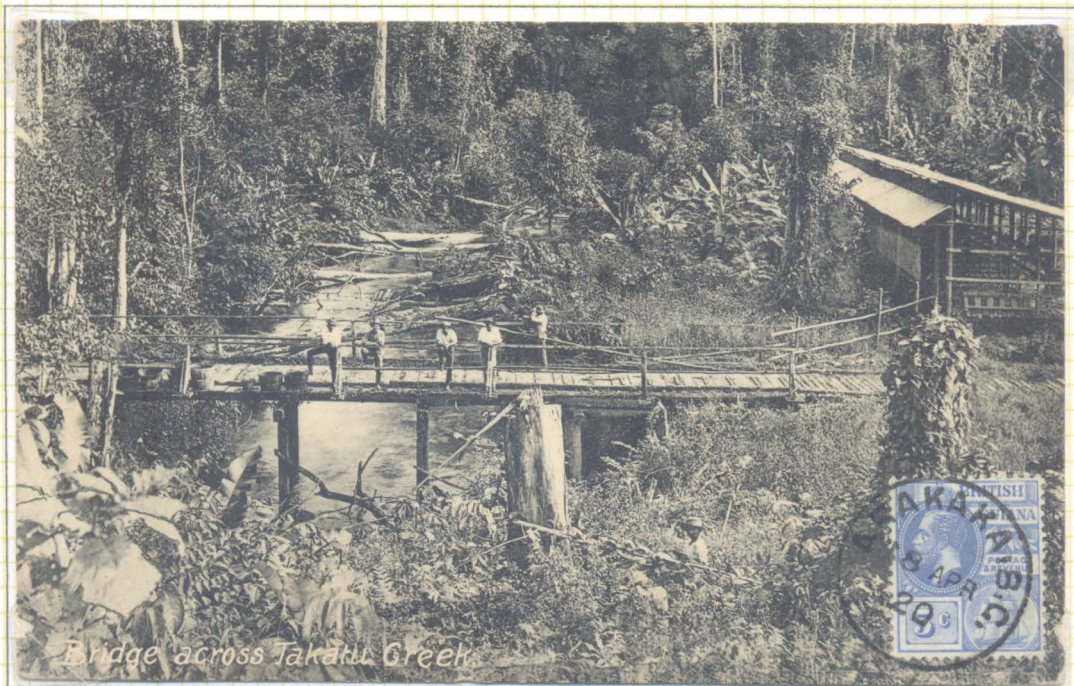


Another local cover to Georgetown showing a 'DE KINDEREN' (T&H Type 15, Sub-type E) dated 9 May 1912. This mark is rated as scarce.



Local cover to Georgetown showing an 'AURORA' datestamp (T&H Type 15, Sub-type I) dated 28 July 1919.

British Guiana



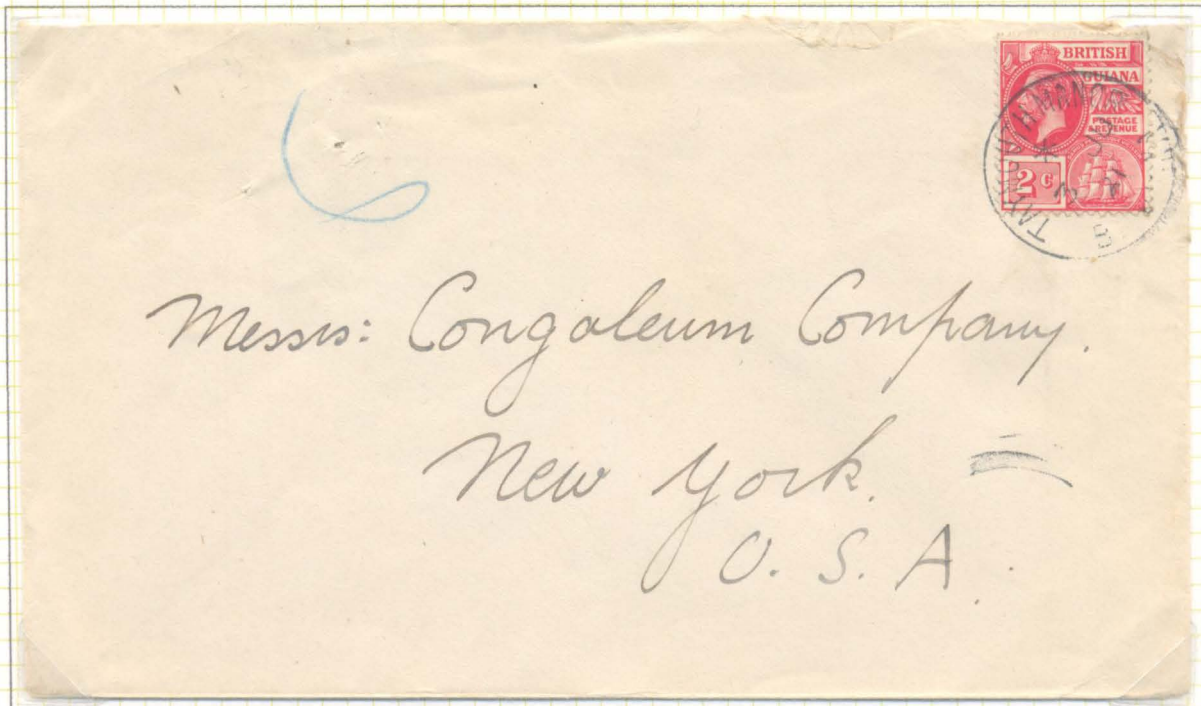
A picture postcard addressed to France with an 'ARAKAKA' datestamp (T&H Type 15e, Sub-type K) and dated 18 April 1920.



A cover addressed to Texas with a 'MAHAICA' datestamp (T&H Type 15e, Sub-type K) and dated 5 June 1929.

British Guiana

Two covers from this issue bearing village postmarks.



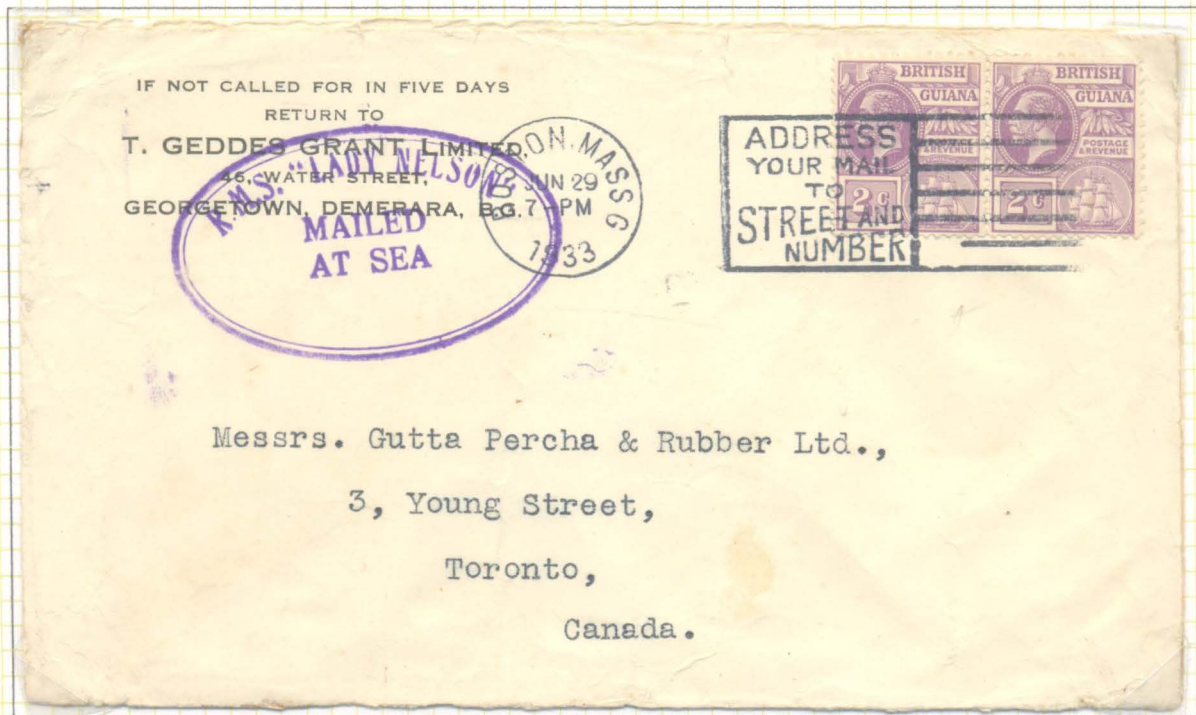
Cover to New York franked with a 2 cents scarlet and postmarked 'TAYMOUTH MANOR' (T&H Type 24c) and dated 3 July 1921.



Montgomery Ward cover to Chicago franked with a pair of 2 cents violet and postmarked 'MACKENZIE' (T&H Type 23c) and dated 8 February 1928.

British Guiana

The 1920s were the hey-day of ocean liners and many ships had their own cachets; most transit ports also had marks which were sometimes applied when mail passed through.



Cover to Toronto via Boston, franked with a pair of 2 cents violet and also bearing the cachet of the R.M.S. LADY NELSON of the Royal Mail Shipping Line.



Cover to England via Cristobal and sailing on the S.S. COLOMBIA (in manuscript).

British Guiana

The late 1920s witnessed the first flights from the USA through the Caribbean to British Guiana. Mail was carried on both the outbound and inbound flights and suitable cachets were applied by the airline. Of course, mails bearing British Guiana adhesives are only present on flights inbound to the USA.



Cover to Chicago which left British Guiana on the First Flight on 23 September 1929.



Cover to West Hartford, Conn. which left British Guiana on the First Flight on 23 September 1929.

British Guiana



Cover to Guayaquil, Ecuador which left British Guiana on the First Flight on 5 February 1931.



Cover to Lima, Peru which left British Guiana on the same First Flight on 5 February 1931.

British Guiana

Amongst the many different and unusual destinations where mail was addressed to from British Guiana are these two, to Malta and Feilding, North Island, New Zealand.

