

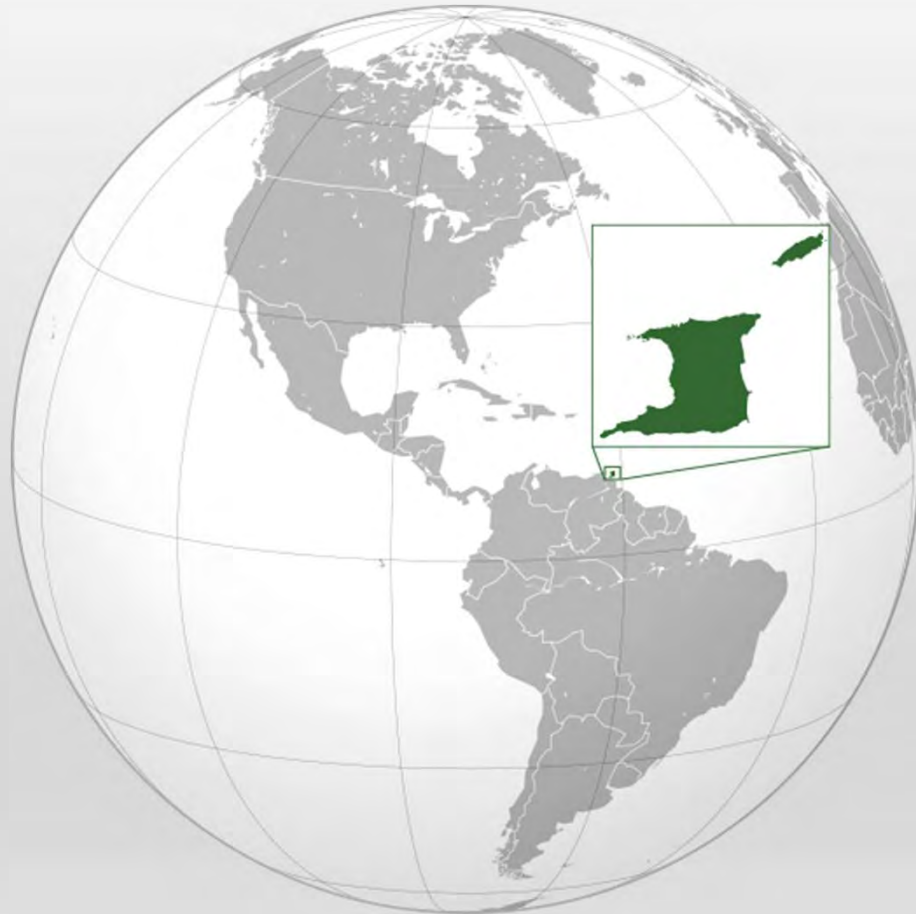
BRITANNIA STAMPS OF TRINIDAD 1851 - 1883



Nigel Mohammed
Montgomery, IL

WHAT WILL BE COVERED

- Where is Trinidad
- Where did the Britannia design originate
- Who designed the stamp and what colonies used it
- Features and Characteristics of the stamp
- When was the local Postal Service inaugurated
- Differences in the stamps over its life
- Paper Types, Perforation, and Watermarks
- Provisionals, including the renowned Local Lithographs and 1d Manuscript
- Bisects



TRINIDAD FACTS

- British Colony from 1797 till 1962
 - (captured from the Spanish)
 - Southernmost island in the Caribbean
 - Population 1797 ~ 17,000
 - Population 2017 ~ 1,369,311
 - 1,841 square miles
 - Cash crops in Colonial days were sugar, cocoa, coffee

BRITANNIA ORIGIN

- **Minerva (Roman), Pallas Athena (Greek)** – goddess of wisdom, fertility, war, & victory
- Inventress of ship building
- Main attributes include:
 - Helmet
 - Spear
 - Shield with gorgons head



“Now Minerva, we are told, was a favorite goddess with Britons before their conversion to Christianity. Whether this to be so or not, what better prototype for Britannia could be found than one who could symbolize Britain’s conquest of the sea, Britain’s commerce, and Britain’s glory?”

Rev. T.C. Walton, M.A.

Postage Stamp Devices, Gibbons Stamp Weekly, 1905, Vol II.

BRITANNIA DESIGN

- Painted by water color artist, **Edward Henry Corbould**
- Die engraver, **Charles Henry Jeens**
- Shared design for colonies of:
 - Trinidad (April 11, 1851)
 - Barbados (April 17, 1852)
 - Mauritius (1858)

1848 Master Die Proof in black,
blank tablet
Perkins Bacon



BRITANNIA DESIGN ARTIST



- Water color artist, **Edward Henry Corbould**

Born	1815
Died	1905
Nationality	British
Occupation	artist

BRITANNIA SHARED DESIGN

➤ Trinidad

(April 11, 1851)



➤ Barbados

(April 17, 1852)



➤ Mauritius

(1858)



BRITANNIA FEATURES & CHARACTERISTICS

- **Seated** figure wearing helmet, 5 point star
- **Spear**, single tip, held in right hand
- **Shield**, left arm resting, bearing triple cross of St. Andrew, St. George, and St. Patrick
- **Sail ship**, emblem of a great seafaring nation
- **Bale of goods**, indicating commerce
- **Square with 8 point star** in each corner, dot in center
- **Lace scrollwork** on perimeter



BRITANNIA COMPARISON



FIRST ISSUED

- **Lord Harris**, 13th Governor of Trinidad (1846 – 1854), requisitioned an Inland Post to colonial secretary on January 30, 1847
- Negotiations lasted for **four years** before the Inland Postal Service was **inaugurated on August 14, 1851**
- **On April 11, 1851 stamps were issued, arrived on Mail Steamer SEVERN**
- Printed by Perkins Bacon, London
- On Blue Paper
- Imperforated
- No denomination expressed



FACTS OF THE BRITANNIA SERIES

- ✓ **LASTED FOR 32 YEARS**
- ✓ **IMPERFORATED & PERFORATED STAMPS**
- ✓ **UNDENOMINATED & DENOMINATED VALUES**
 - ✓ **TWO PRINTING COMPANIES**
 - ✓ **WATERMARKED & UNWATERMARKED**
 - ✓ **DIFFERENT TYPES OF PAPER**
 - ✓ **MANY TYPES OF PERFORATIONS**
 - ✓ **NUMEROUS COLORS & SHADES**
- ✓ **PROVISIONALS, LOCALLY MADE & OVERPRINTS**

DISTINCTIONS AND DIFFERENCES

IMPERFORATE

- 1851 to 1859
- Printer Perkins Bacon, Recess Printed
- No value expressed until 1s 1859 issues
- Colors: Blue, Brown, Lilac, Grey, Red, Green, Indigo
- Shades: many of each color
- Blue and white paper
- No watermarks
- Sheet size 110 (11 x 10) and 240 (10x24) for 1s sheets in 1859
- *** Lithographs

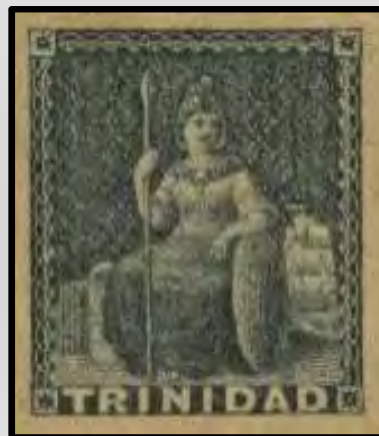
PERFORATE

- 1859 to 1883
- Printers Perkins Bacon & De La Rue. Recess & Typographed
- 1d, 4d, 6d, 1s (1/2 d Provisionals)
- Colors: Red, Purple, Brownish Purple, Lilac, Red, Green, Indigo, Bluish Slate, Mauve, Rose, Carmine, Chrome Yellow, Grey
- Shades: many of each color
- White regular and thick paper
- Watermarks: None, Crown CC, Crown CA
- Pin Perf, Clean Cut, Rough
- Many types: 11½, 12, 12½, 13, 13½, 14, 14x12½, 14x16½
- Sheet size: 110 (11x10) and 240 (10x24)

IMPERFORATE

No value expressed (1d)

- 1851 to 1859
- Printer Perkins Bacon, Recess Printed
- No value expressed until 1859 issues
- Colors: Blue, Brown, Grey, Lilac, Red, Green, Indigo
- Shades: many of each color
- Blue and white paper
- No watermarks
- Sheet size 110 (11 x 10) and 240 (10x24) for 1s sheets in 1859
- *** Lithographs





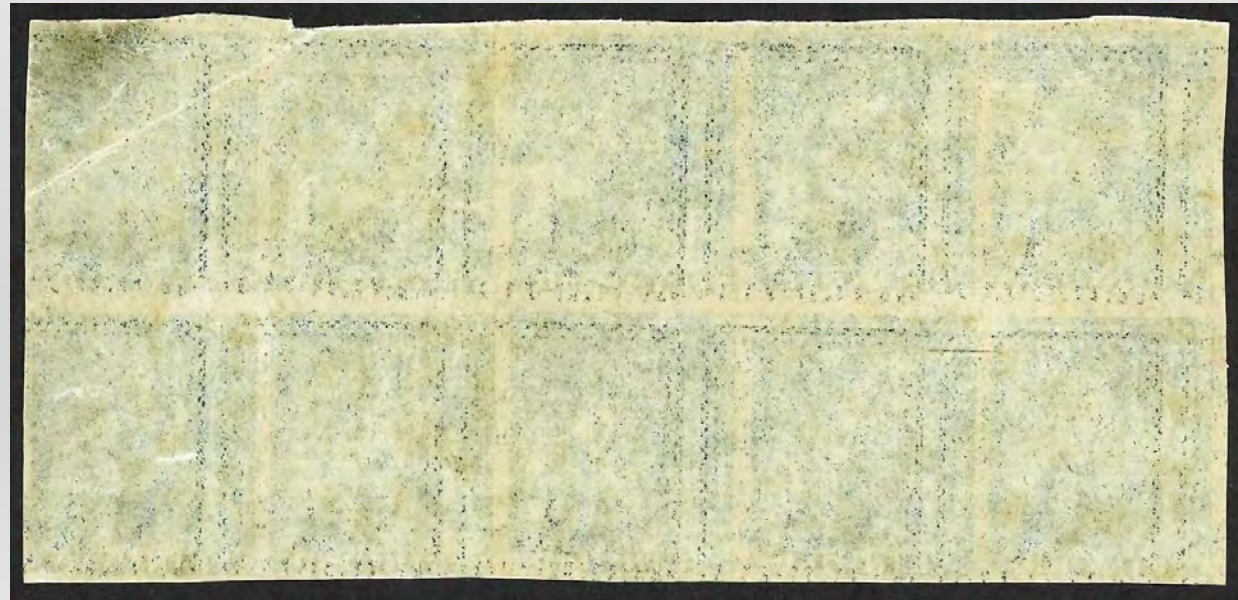
PAPER TYPES

BLUE PAPER, NO WATERMARKS



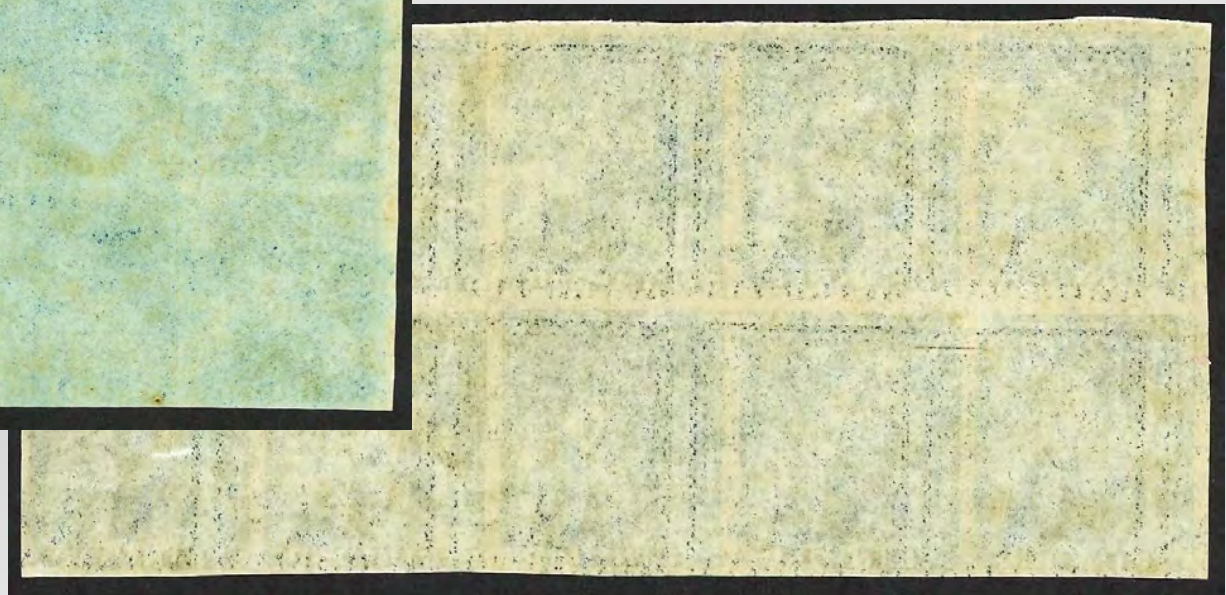
PAPER TYPES

WHITE PAPER, NO WATERMARKS



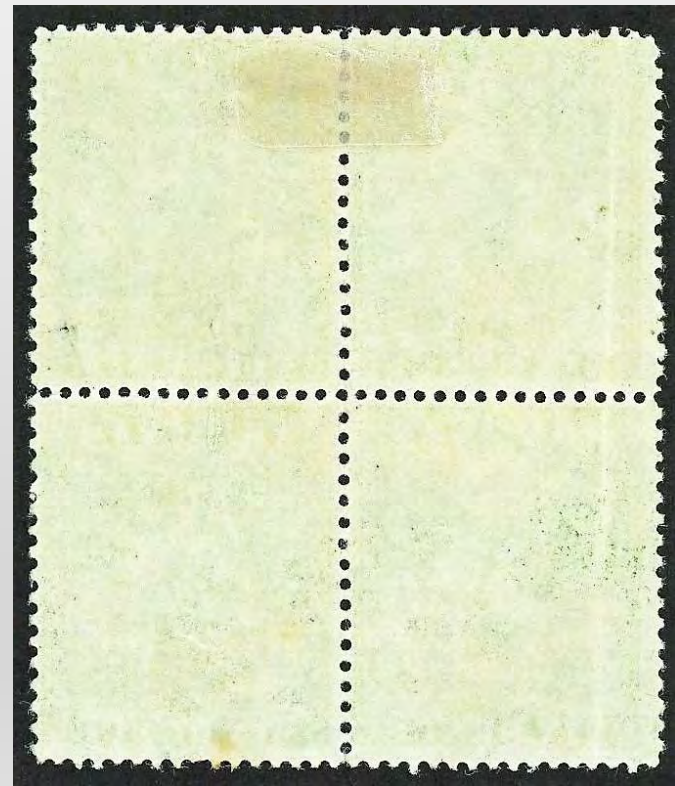
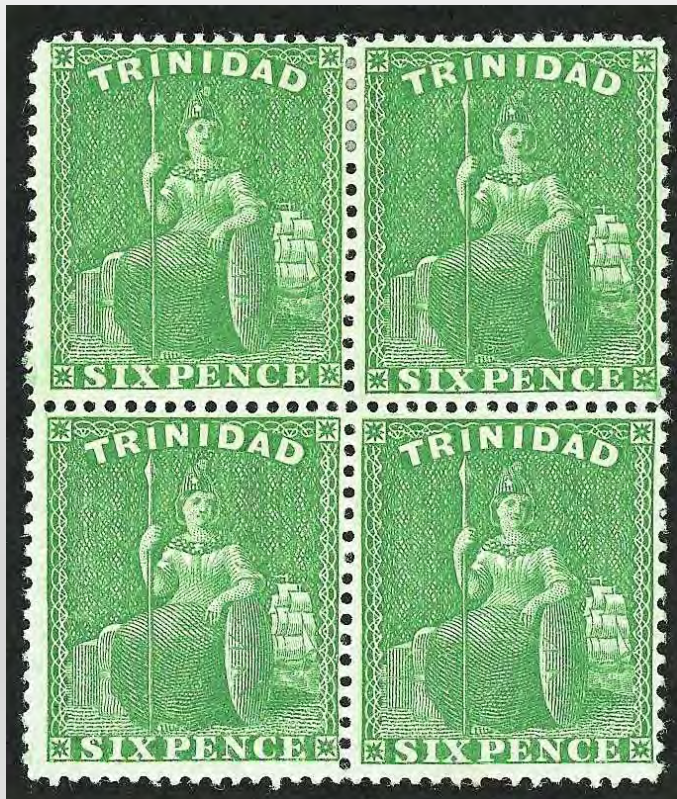
PAPER TYPES COMPARISON

BLUE vs. WHITE PAPER, Imperforate



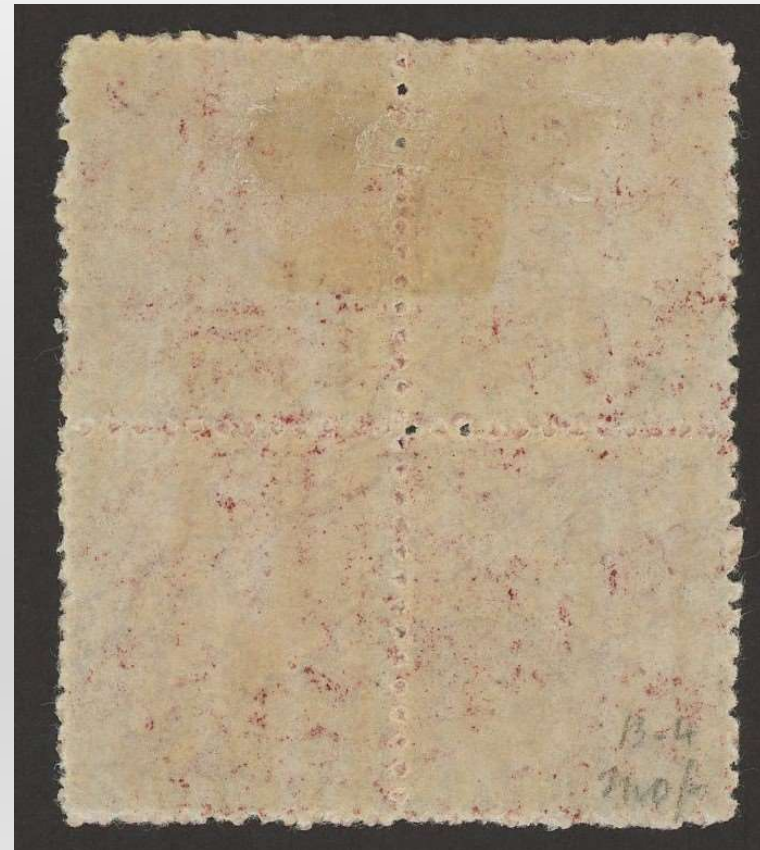
PAPER TYPES

WHITE PAPER, NO WATERMARKS

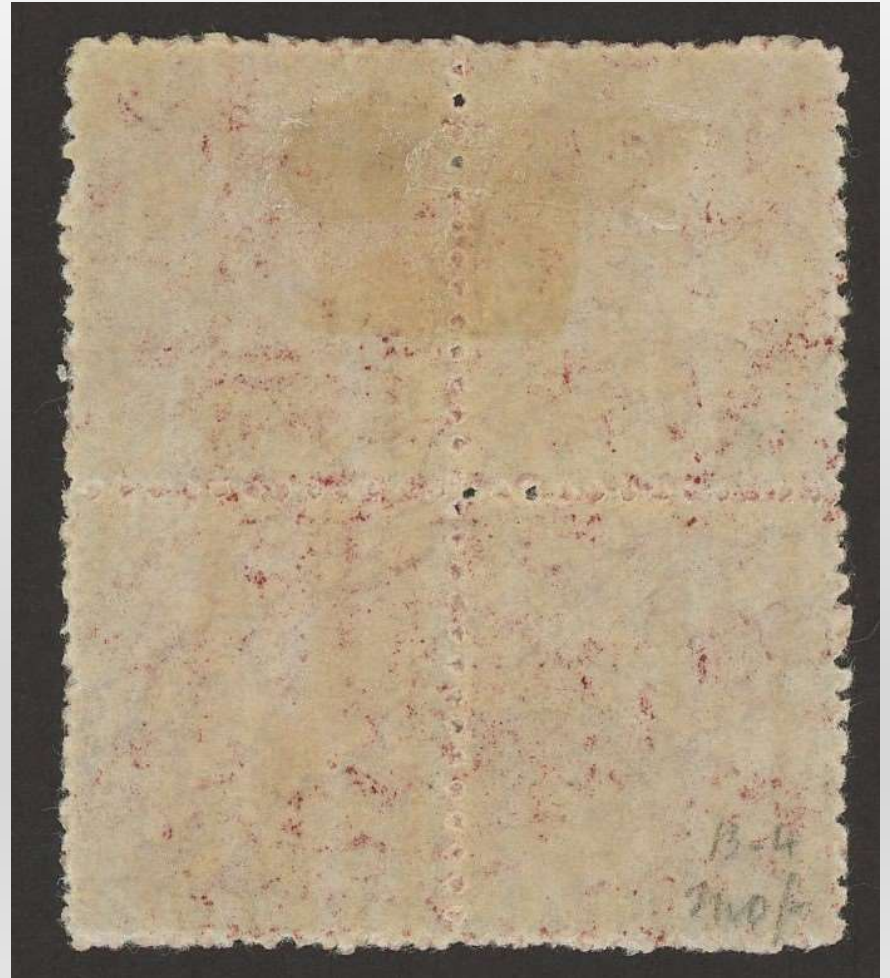
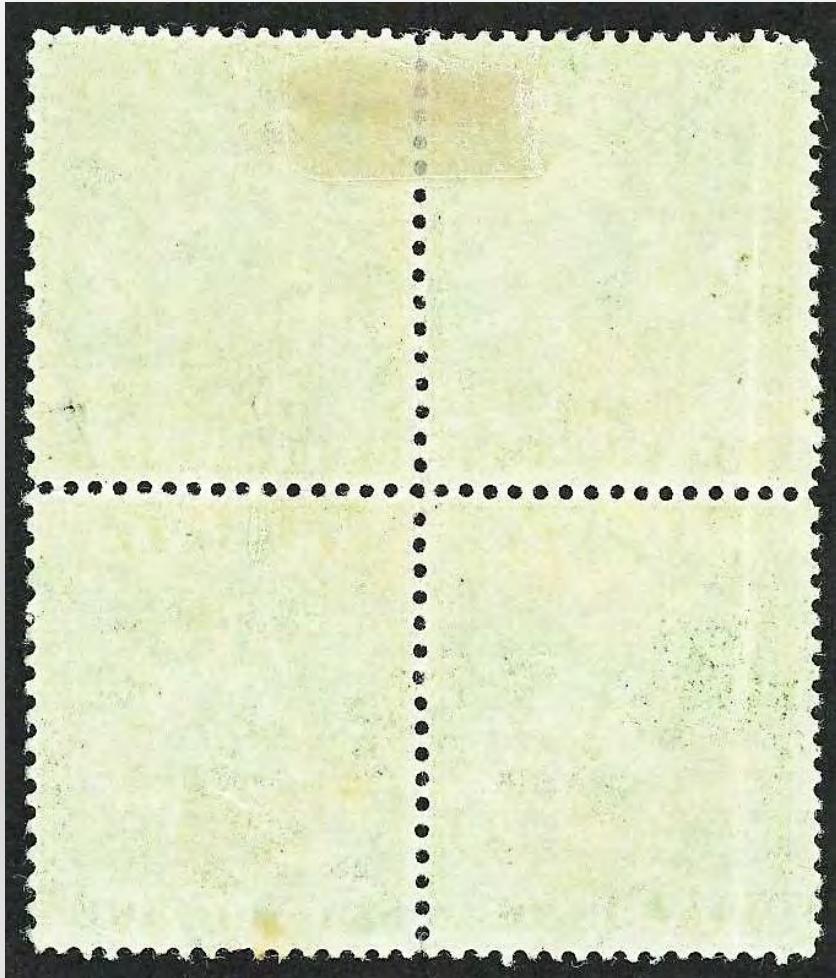


PAPER TYPES

WHITE THICK PAPER, NO WATERMARKS



PAPER TYPES – NORMAL VS. THICK PAPER, PERFORATE



IMPERFORATE

1859 denomination

- Printer Perkins Bacon, Recess Printed
- 4d with Color shades
- 6d and 1shilling
- White paper
- No watermarks
- Sheet size 110 (11 x 10) and 240 (10x24) for 1s sheets in 1859



Provenance: Ramkissoon

IMPERFORATE

(Perkins Bacon)



Prepaid entire dated January 10, 1852 from Port of Spain to Paris, **France** with landing cancelation at Calais on 10 February 1852. Entire franked with single **1d purple-brown** (SG2) for prepayment local postage. Cancelled by Marriott Type 0.1b, numeral '1'. Entire showing 'PD' in red oval handstamp and rated 2s 1d in manuscript.



IMPERFORATE

(Perkins Bacon)

Cover franked with **1d purple-grey** (SG 9) paying local postage from Port of Spain to **France**. Dated January 28, 1855 and cancelled by Marriott Type 0.1b, numeral '1' and Trinidad double arc on reverse. Probably charged 2s in manuscript and showing hanstamp VI three bar oval shape obliterator along with red tombstone Paid (code X) and red oval 'P-D.' transit markings.

IMPERFORATE

(Perkins Bacon)



Scarce inter island cover from Port of Spain to **Grenada**, charged 4d in manuscript for the inter-Antillean rate to be paid on delivery. Franked with **1d rose red** (SG 12) for local postage fee and cancelled with Marriott Type 0.2 numeral '1'. On reverse is the Grenada double line cancel dated April 8, 1858. Provenance Gallagher

LITHOGRAPHED PROVISIONALS LOCALLY MADE



- Demand from shortage of stamps over the period 1852 – 1860
- Produced by local French descendent, Charles Petit from a stone plate
- Sheet of 54 (9x6)
- Based on Perkins Bacon design
- Imperforate 1d value only
- 5 issues
- Blue shades, last issue in two colors, blue & red
- Quality fades and color degrades

LITHOGRAPH VS. PERKINS BACON (KEY DIFFERENCES)



- Star
- Facial features and headdress
- Scrollwork on border
- Background
- Letter Font

LITHOGRAPH – THE FIVE PRINTINGS

1st



2nd



3rd



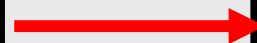
5th red



5th blue



4th



LITHOGRAPHS – 1ST ISSUE

September 1852 to May 1853
(Locally Printed)

- Impression is fine and clear
- thick soft paper
- Yellowish paper
- Color is blue to deep blue, bright blue to greenish blue.
- (SG 13 and SG 14)



LITHOGRAPHS – 1ST ISSUE



An early letter sent by Packet only 45 days after P.M. General, Jas. H. O'Brien requested these stamps. One of the earliest known issues of the **first issue lithograph**, 1d blue (SG13), dated November 9, 1852. Cover rated 1/ sent by Turnbull Stewart, first owner of the famed Lady McLeodship, from Port of Spain to John Neill in Greenock, **Scotland**. Stamp cancelled by excellent strike of Marriott Type 0.1b, numeral '1'.

LITHOGRAPHS – 2ND ISSUE

March 1855 to June 1855
(Locally Printed)

- Impression is clear but not as clear as 1st issue
- Thinner paper
- Yellowish paper
- Color is pale blue to greenish blue
- (SG 15)



LITHOGRAPHS – 3RD ISSUE

July 1856 to February 1857
(Locally Printed)

- Impression can be as good as 2nd issue
- Paper has smoother appearance
- Yellowish paper
- Color is clear to deep blue to dark shades verging on Prussian blue
- (SG 16)



LITHOGRAPHS – 4TH ISSUE

October 1858 to May 1859
(Locally Printed)

- Appearance deteriorates quickly
- Overinking, blotchy & lacking clarity
- Paper has smoother appearance
- Yellowish paper
- Color is clear to deep blue to dark shades verging on Prussian blue
- (SG 17 and 18)



LITHOGRAPHS – 5TH ISSUE (BLUE)

March 1860 to June 1860
(Locally Printed)

- Worn impression with flatter appearance
- lacks clarity and detail
- Color is gray and bluish gray
- (SG 19)



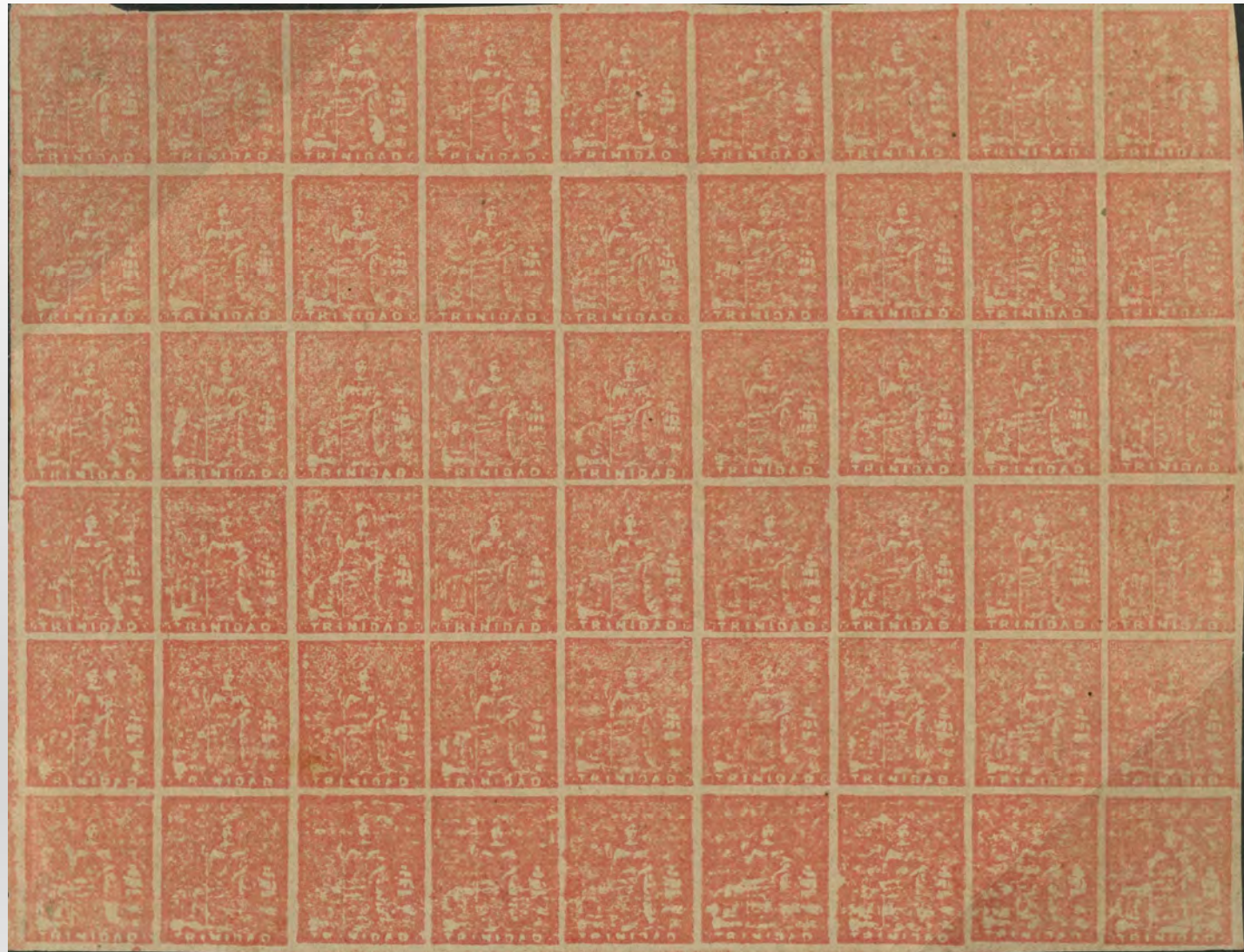
LITHOGRAPHS – 5TH ISSUE (RED)

March 1860 to June 1860
(Locally Printed)

- Worn impression with flatter appearance
- lacks clarity and detail
- Color changed to red to improve the impression
- (SG 20)



LITHOGRAPH
5TH ISSUE
(RED)



PERFORATED STAMPS – VARIETIES

Pin Perf



Clean Cut Perf



Rough Perf



PERFORATED STAMPS

Pin Perf



- Recess Printed, Perkins Bacon
 - First introduction of Perforated stamps
 - 1859 – 1861
 - Denominated & Undenominated values 1d, 4d, 6d, 1s
 - White Paper, Unwatermarked
 - 12 ½, 13 ½, 14,
 - difficult to separate

PERFORATED STAMPS

Pin Perf

(Perkins Bacon)



Cover (front) to Pointe-à-Pitre, **Guadeloupe** from Port of Spain. Cover franked with **1d and 4d Pin Perf** stamps obliterated with Marriott Type 0.2, numeral '1'. Crown Circle "Paid at Trinidad" handstamp in red. Manuscript '30 décimes' in black.

PERFORATED STAMPS

- Recess Printed, Perkins Bacon
- 1860
- Denominated & Undenominated values 1d, 4d, 6d only
- White Paper, Unwatermarked
- 14 – 16 ½
- Perforated by Griffiths machine ('A' machine)
- Improvement over Pin Perforation

Clean Cut Perf:



PERFORATED STAMPS

Rough Perf



- Recess Printed, Perkins Bacon
- 1861
- Denominated & Undenominated values 1d, 4d, 6d, 1s
- White Paper, Unwatermarked
- 14 - 16 ½
- Deterioration of Griffiths machine resulted in rough perforation

PERFORATED STAMPS

Rough Perf

(Perkins Bacon)



Inter island cover addressed to Mrs. Louis from Port of Spain to Roseau, **Dominica**. Trinidad double line datestamp Oc 23 1861 on reverse. Cover franked with **1d and 4d Rough Perf** stamps that is obliterated with Marriott Type 0.2, numeral '1'. Crown Circle "Paid at Trinidad" handstamp in red to show prepayment of 4d (red crayon) inter-Antillean rate. 1d for the prepayment of local postage fee.

DE LA RUE PRINTERS

(CHANGE OF PRINTERS, END OF PERKINS BACON, 11 YRS.)

- Perkins Bacon delivered Plate and dies to Crown Agents, Jan 2nd, 1862
- Early stamps: Quality, details, and centering of stamps not very good initially due to worn plates
- Numerous color shades and many types of Perforations:
- 11 ½, 12, and 11 ½, 12 with compound 11, 12, 12 ½, 13,14,
- Sheets size was 110 (11 x 10) and 240
- Denominated values 1d, 4d, 6d, 1s
- Thick White, Normal White, Unwatermarked and Watermarked Paper
- Papermaker was given as T.H. SAUNDERS

DE LA RUE, EARLY 1862 STAMPS

Lacking Detail

Blotchy

Poor Centering



DE LA RUE, EARLY 1862 STAMPS

Color Shades – **1S Mauve**, Perf. 13



DE LA RUE, INTRODUCTION OF CROWN AND CC STAMPS, 1863 -1875



Color Trial



**Cancelled
Samuel, D5**



**Imperforate
Crown and CC**

Provenance: Ramkissoon

DE LA RUE, CROWN AND CC STAMPS,

PLATING VARIETY



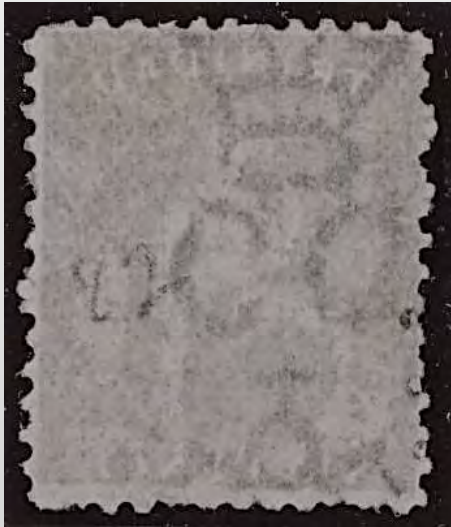
- Last stamp is **dropped**
- Causing Trinidad to be Perforated
- Top stamp **has largest margin**

- **First and Last** stamp is out of **out of alignment** with middle two stamps

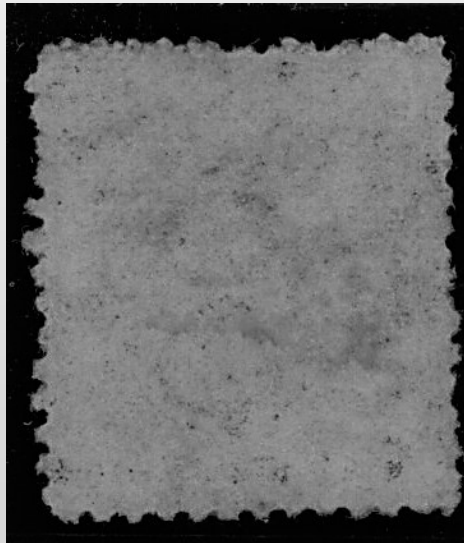


DE LA RUE, CROWN AND CC STAMPS,

WATERMARK TYPES



REVERSED



SIDWAYS

- **INVERTED**
- **SIDWAYS**
- **REVERSED**
- **INVERTED & REVERSED**

DE LA RUE, 1863 - 1875 STAMPS

Color Shades – 4d Mauve, Perf. 12 ½



DE LA RUE, 1863 - 1875 STAMPS

Color Shades – 6d Green, Perf. 12 ½



DE LA RUE, 1863 - 1875 STAMPS

Perf 12 ½

Cover from Port of Spain to Pointe-à-Pitre, **Guadeloupe** franked by 1865 **1d (lake)** and **4d (dull mauve)** showing the 5d rate to the West Indian Islands. Trinidad double arc handstamp in black along with red "Paid at Trinidad" **Crown Circle** applied. Obliterated with Marriott Type 0.3, numeral '1'. Red Manuscript 4 in crayon on front along with a rare usage of '30' décimes due marking in black applied upon receipt.



DE LA RUE, 1863 - 1875 STAMPS

Perf 12 1/2



Triple Rate Packet Letter with **1d and 1s stamps**, from **United States Consulate** in Trinidad to New York, United States with Red Trinidad Paid double arc handstamp of August 8, 1875. New York 15 cents Due upon arrival and redirected to New Hampshire. Manuscript 1/ red crayon.

DE LA RUE, 1863 - 1875 STAMPS

Perf 12 ½

Cover from Port of Spain to **France**, bearing the 1863 **1d Perf 12 ½ stamp** and tied by Marriott Type 0.2, numeral "1" obliterator. Franked for the local 1d inland postage fee. The rate by British Packet during this period to France was 8d per 1/2 oz. Rated '10' décimes on arrival and handstamped "**GB/2F**". A watery and most likely indistinguishable red "Paid at Trinidad" Crown Circle on front. Transit marking "Angl./Amb Calais, "London" along with "Paris" and "St. Florent en Corse" arrival marks on reverse. There is also the Forwarding agent cache in boxed blue marking on reverse.



DE LA RUE, 1863 - 1875 STAMPS

Perf 12 ½

Mourning cover, with black edging, to Brignalle, **France** bearing a pair of bright violet stamps from the 1863, **4d (SG 70)**, Perf 12 1/2, Crown and CC consignment. The British Packet rate was 8d during this period, until it was reduced to 7d in January 1871. Dated January 24 by red "Trinidad Paid" datestamp. Red "7" manuscript crayon rating, along with a red "London Paid" datestamp. Includes the oval "PD" arrival marking, Calais entry and Brignalle datestamps on reverse.



DE LA RUE, 1863 - 1875 STAMPS

Perf 12 ½

1875 Envelope to **Panama** in Central America addressed to "The Honourable Admiral A. (Arthur) Cochrane C.B." This is one of several correspondences to the Admiral who was the Commander in Chief at the Pacific Station. Franked by the 5d British Packet rate comprising of a **1d and 4d stamps** of the Perf 12 ½, Crown and CC, consignments. Cancelled by red "Trinidad Paid" double arc datestamp of February 8, 1875 and red "4" crayon. On reverse is the St. Thomas transit marking dated February 13, 1875.

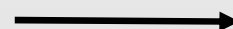


DE LA RUE, 1872 STAMPS COLOR CHANGED (PERF. 12 ½)

4d violet

changed to

4d grey



1S mauve color

changed to

chrome-yellow



DE LA RUE, 1863 - 1875 STAMPS

Perf 12 ½

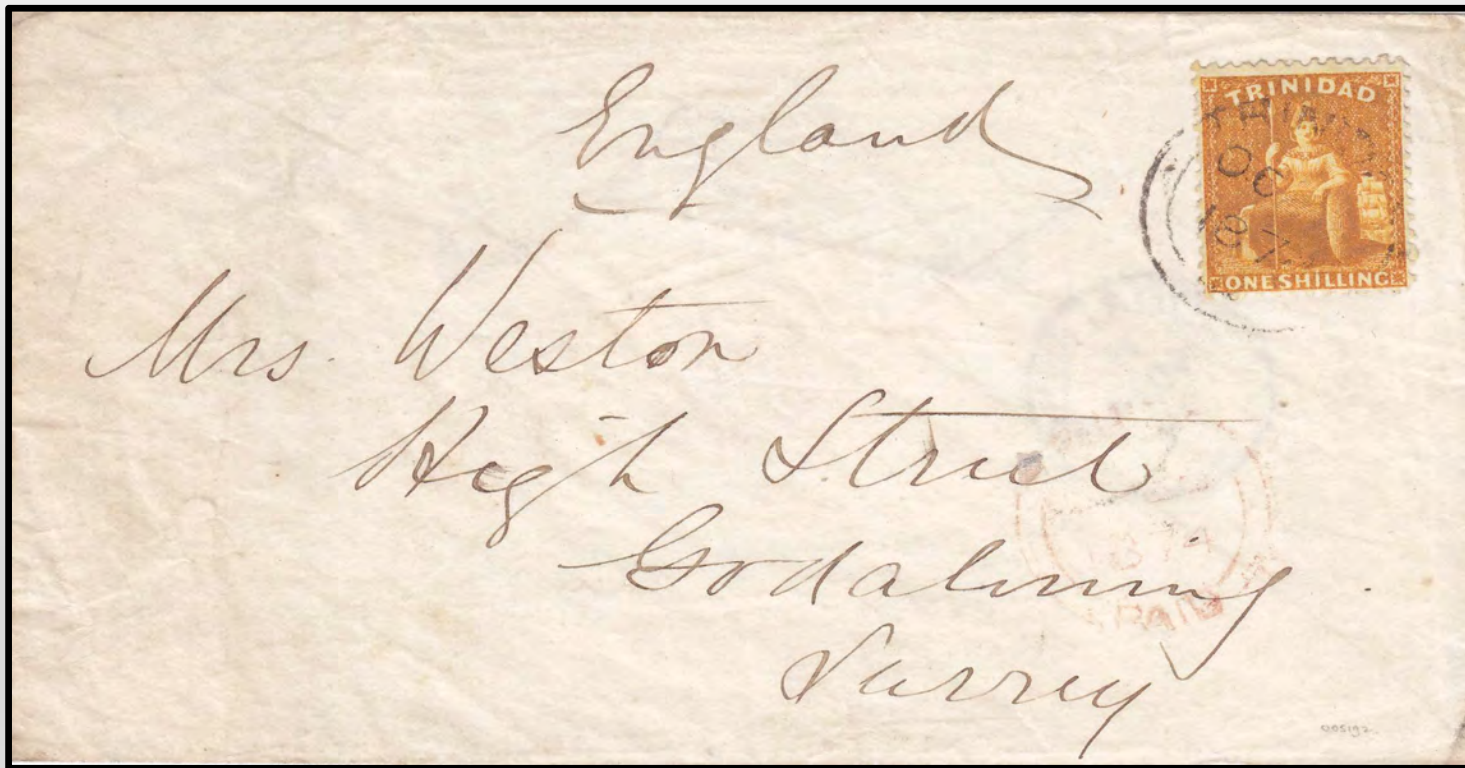
1879 cover to Vicenza, **Italy** from Port of Spain, Trinidad. Cover bearing a **4d perforation 12 1/2 Crown and CC stamp** and cancelled with Trinidad double arc dated July 9. Red crayon manuscript 3 (Paid) front marking.

London Paid transit arrival mark of July 28, 1879.

On reverse is a Vicenza arrival datestamp July 30, 1879.



DE LA RUE, 1863 - 1875 STAMPS



Perf 12 ½

Weston
correspondence letter,
October 26, 1874 tied
by red Trinidad Paid
double arc handstamp
from Trinidad to Surrey,
England. Cover
showing the 1s rate to
the UK and franked with
Perforation 12 1/2 stamp
1S that is cancelled by
Trinidad double arc
handstamp.
Godalming arrival
cancel, November 14,
1874

DE LA RUE, 1876 STAMPS

Perf. 14 Crown and CC stamps issued

1d red with various shades and watermarks

4d gray with various shades and watermarks

6d green with various shades and watermarks

1S chrome-yellow with various shades and watermarks

DE LA RUE, 1876 STAMPS

1d red
Perf. 14
Crown
and CC



DE LA RUE, 1876 STAMPS

4d gray
and 6d
Perf. 14
Crown
and CC



Specimen,
Samuel Type D3



Specimen,
Samuel Type TRI I

DE LA RUE, 1876 STAMPS

1S chrome-yellow Perf. 14 Crown and CC

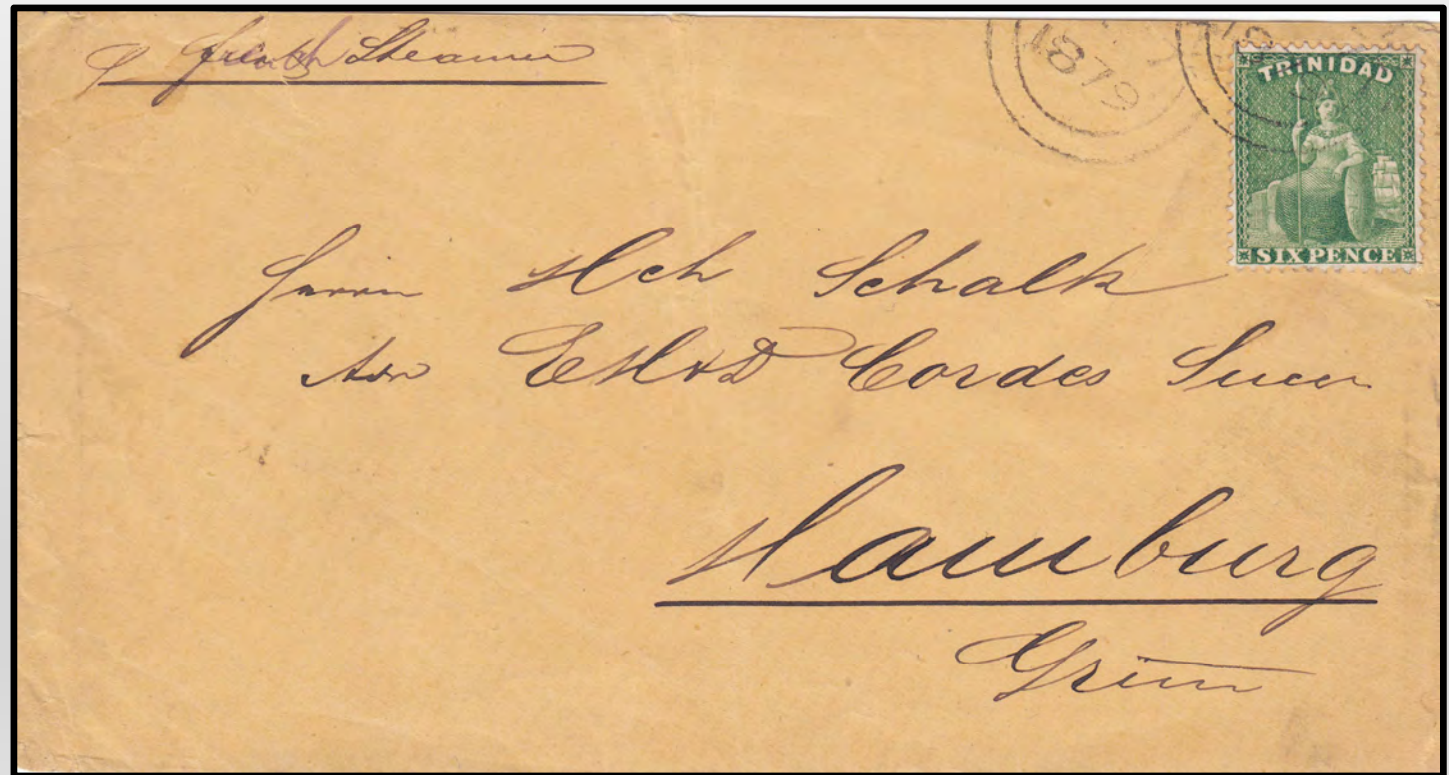


Strip of 8, One of the largest known

DE LA RUE, 1863 - 1875 STAMPS

Perf 14

Cover from **Ciudad Bolivar, Venezuela** to Hamburg, Germany sent via Trinidad. The cover was carried privately to Trinidad where the **6d bright yellow green stamp** was applied and cancelled by the Trinidad double arc, dated February 7, 1879. On reverse shows Sprick Luis & Co. Ciudad Bolivar merchant cachet marking. In addition there is the J.N. Harriman & Co., Trinidad B.W.I. purple cachet along with the Hamburg arrival datestamp of March 30, 1879.



DE LA RUE, 1863 - 1875 STAMPS

Perf 14

Registered Cover, No. 223, from Port of Spain to Godalming, Surrey, **England**, bearing the **4d and 6d Perf 14 stamps** tied by Trinidad double arc datestamp of May 27, 1877. On front are two red strikes of the **REGISTERED** marks and the oval Registered London datestamp of June 12, 1877. On reverse is the Godalming arrival datestamp of June 13, 1877 and red wax seal "Master Colonial, Trinidad".



DE LA RUE CROWN AND CA STAMPS, 1882



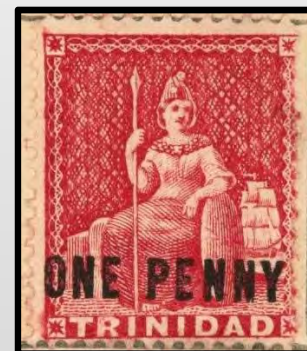
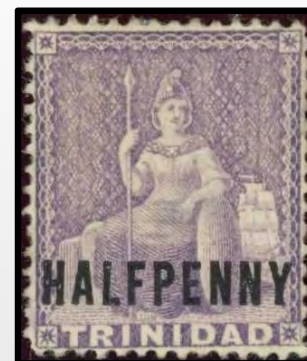
4d bluish grey



PROVISIONALS OF 1879 -1882 WHY WERE THEY NEEDED?

HALF and ONE PENNY - Rate change
for letters, postal cards, and wrappers

1d Manuscript – worn out Perkins
Bacon plates, delay in printing and
high demand for 1d stamps



PROVISIONALS OF 1879 -1882, TYPES & COLOR

DENOMINATIONS: HALF PENNY, ONE PENNY, MANUSCRIPT

➤ **HALF PENNY** (1879):

on **1d lilac**, Crown and CC

on **1d mauve**, Crown and CC

on **1d deep brown** variety,
Crown and CC

➤ **ONE PENNY** (1882):

on **1d rosy-carmine**, Crown
and CA

➤ **HALF PENNY** (1882):

on **1d lilac**, Crown and CA

➤ **Manuscript 1d** (1882):

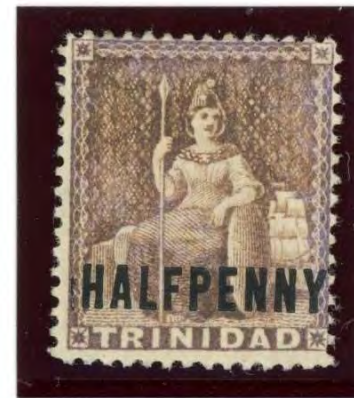
on **6d green** issue of 1876,
locally made

PROVISIONALS OF 1879 -1882

➤ **HALF PENNY (1879):**

on 1d mauve,
Crown and CC

Note color
changing on
upper right stamp



PROVISIONALS OF 1879 -1882

➤ **HALF PENNY** (1879):

on 1d lilac,

Crown and CC



PROVISIONALS OF 1879 -1882

Gorgeous block of 16 (SG 98) and cancelled by Marriott Type 0.5, roller numeral '1'.

This is one of the largest known used blocks of the **HALF PENNY** surcharge.



PROVISIONALS OF 1879 -1882

Registered cover (front) with 12 **HALF PENNY** surcharged stamps in a strip of 7 combined with a strip of 3, and two singles, along with a pair of 1876, Perf 14, 1d stamps to A. Churchill, Essex, **England**. Black straight line '**REGISTERED**' handstamp applied in Trinidad with receiving red oval Registered London markings on front. Dated March 9 1882 by Trinidad double arc datestamp.



PROVISIONALS OF 1879 -1882

➤ **HALF PENNY** (1879):

on 1d deep brown variety

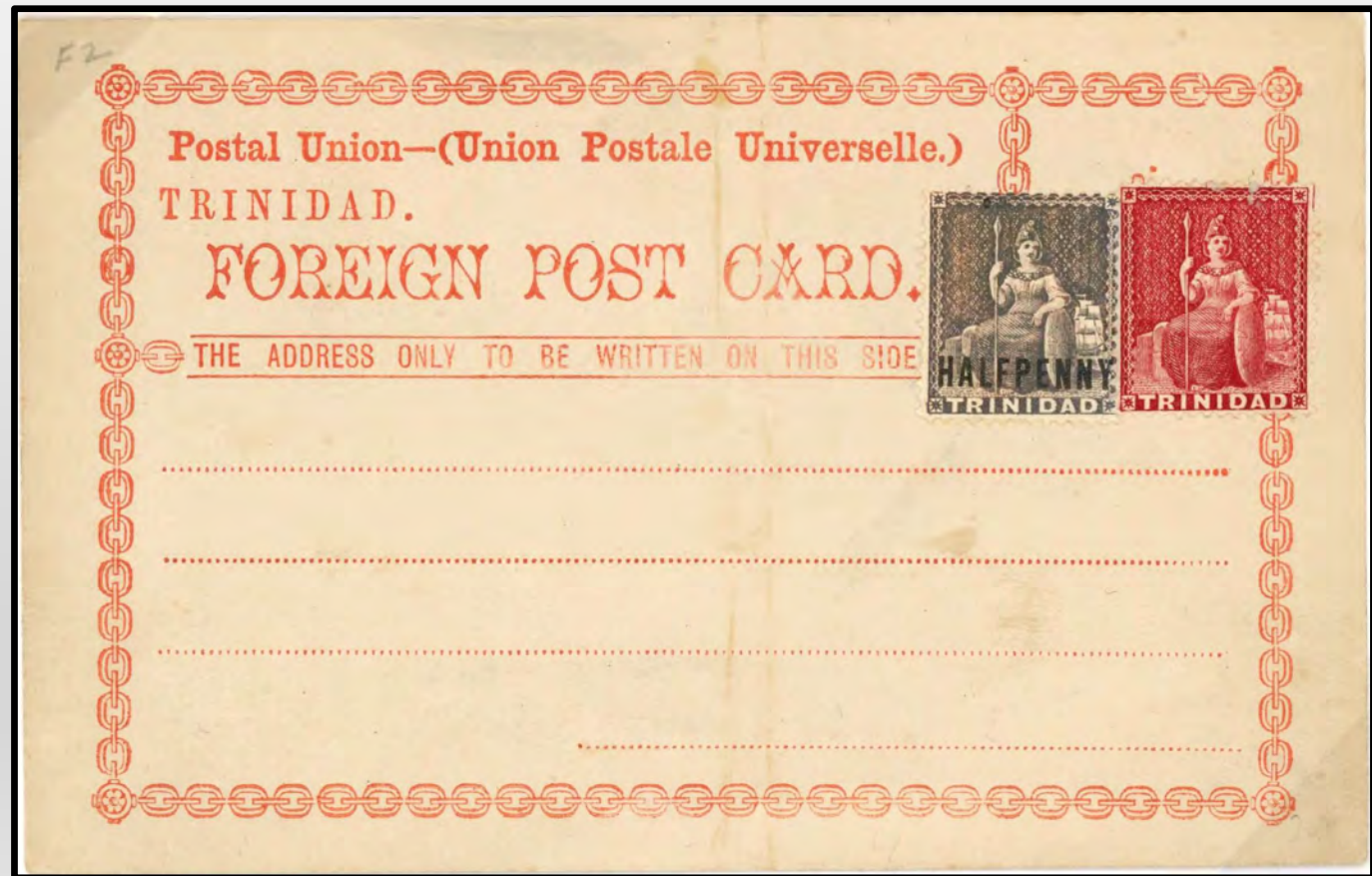
Crown and CC

➤ The brown is believed caused by color changeling of the mauve variety stamp.



PROVISIONALS OF 1879 -1882

Deep brown **HALF PENNY** surcharge stamp in combination with a single 1876, Perf 14, 1d stamp making the 1 1/2 d rate for on the locally produced Foreign Postal Card.



PROVISIONALS OF 1879 -1882

- **ONE PENNY** (1882): on **1d rosy-carmine**, with color shades



PROVISIONALS OF 1879 -1882

- **ONE PENNY** (1882)
on 1d rosy-carmine

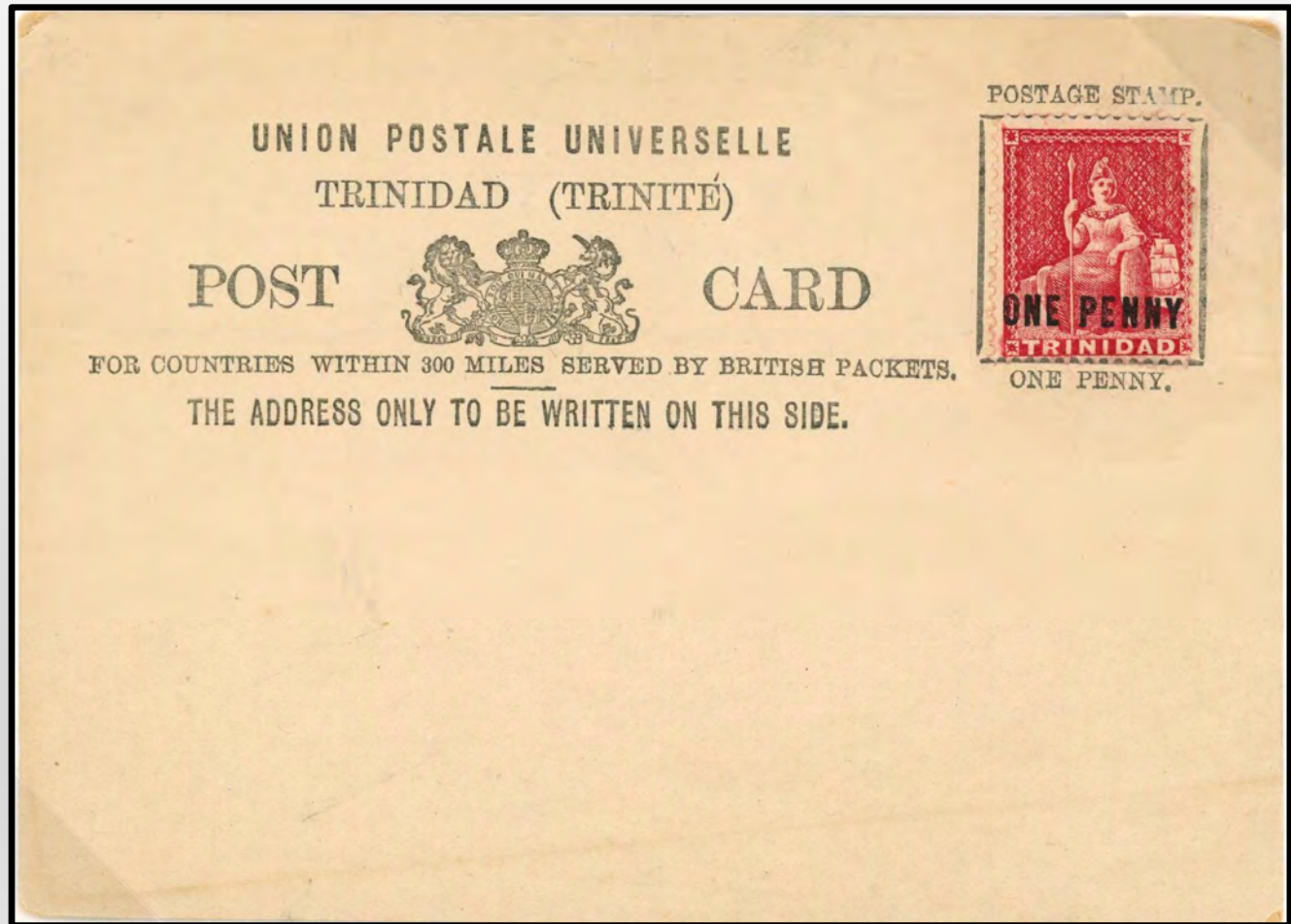
Cover to Livourne,
Italy, having the **ONE
PENNY** surcharge on
1d rosy-carmine
cancelled by circular
datestamp
September 7, 1882.



PROVISIONALS OF 1879 -1882

- **ONE PENNY** (1882)
on 1d rosy-carmine

ONE PENNY surcharge
for the 1d rate on a UPU
(Universal Postale
Universelle)
Formula Card for
countries within 300
miles served by British
Packets.



PROVISIONALS OF 1879 -1882

1d manuscript (1882):

- on **6d green** issue of 1876
- Numerous styles of handwriting types
- Made locally by Post Office Clerks
- Black ink – rare with T.16 Chaguanas Duplex
- **Red ink** - common



PROVISIONALS OF 1879 -1882

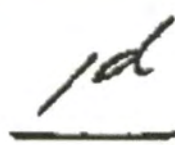
Type 1

Handwritten '1d' in a cursive style with a thin horizontal line underneath.

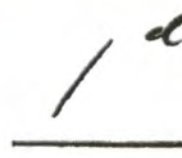
Type 2

Handwritten '1d' in a cursive style with a thick horizontal line underneath.

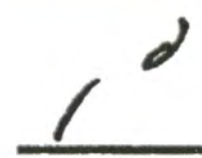
Type 3

Handwritten '1d' in a cursive style with a thin horizontal line underneath.

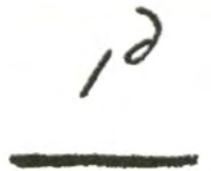
Type 4

Handwritten '1d' in a cursive style with a thin horizontal line underneath.

Type 5

Handwritten '1d' in a cursive style with a thin horizontal line underneath.

Type 6

Handwritten '1d' in a cursive style with a thick horizontal line underneath.

Type 7

Handwritten '1d' in a cursive style with a thin horizontal line underneath.

Type 8

Handwritten '1d' in a cursive style with a thick horizontal line underneath.

Type 9

Handwritten '1d' in a cursive style with a thin horizontal line underneath.

Type 10

Handwritten '1d' in a cursive style with a thin horizontal line underneath.

Type 11

Handwritten '1d' in a cursive style with a thick horizontal line underneath.

➤ **1d manuscript** (1882):

on **6d green** issue of 1876

Numerous styles of handwriting types, Made locally by Post Office Clerks

PROVISIONALS OF 1879 -1882

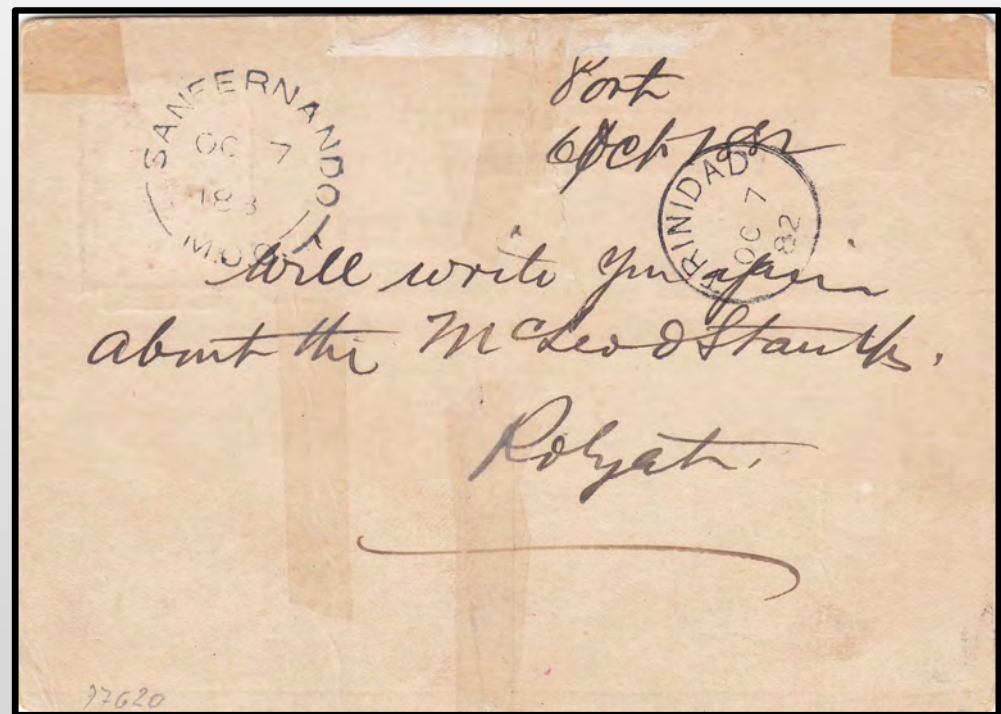


PROVISIONALS OF 1879 -1882



Registered General Post Office cover with strip of ten manuscript **1d on 6d** (one of the largest recorded on cover) to London, **England**. Cover shows two types of the manuscript, **Type 8** and **Type 2** cancelled by Marriott Type 0.5, roller numeral '1'.

PROVISIONALS OF 1879 -1882



Intriguing message about famed Lady McLeod on a UPU Formula Card reads:
"Will write you again about the Lady McLeod Stamps". Scarce San Fernando M.O.O. cancel on back.

BISECTED STAMPS 1879 -1883

WHY WERE THEY NEEDED?

1879 USAGE: Rate reduction from 3d to 1 and 1/2d of the Postal Union Card Foreign Post Card (UPU).

1882 – 1883 USAGE: Rate reduction to 2 and 1/2d for letters to Tobago, Grenada, St. Vincent and Barbados. Wrappers rate reduced to 1/2d.



BISECTED STAMPS 1879 -1883

THREE TYPES (BRITANNIA) & DATES USED

➤ **1d lake, Perf 14 of 1876**

(Period: April, June, July 1879)

- ❖ vertical bisect
- ❖ diagonal bisect

➤ **1d manuscript on 6d**

(Period: January to March 1883)

- ❖ vertical bisect
- ❖ diagonal bisect

➤ **1d rosy-carmine, Perf 14 of 1882**

“ONE PENNY” Provisional

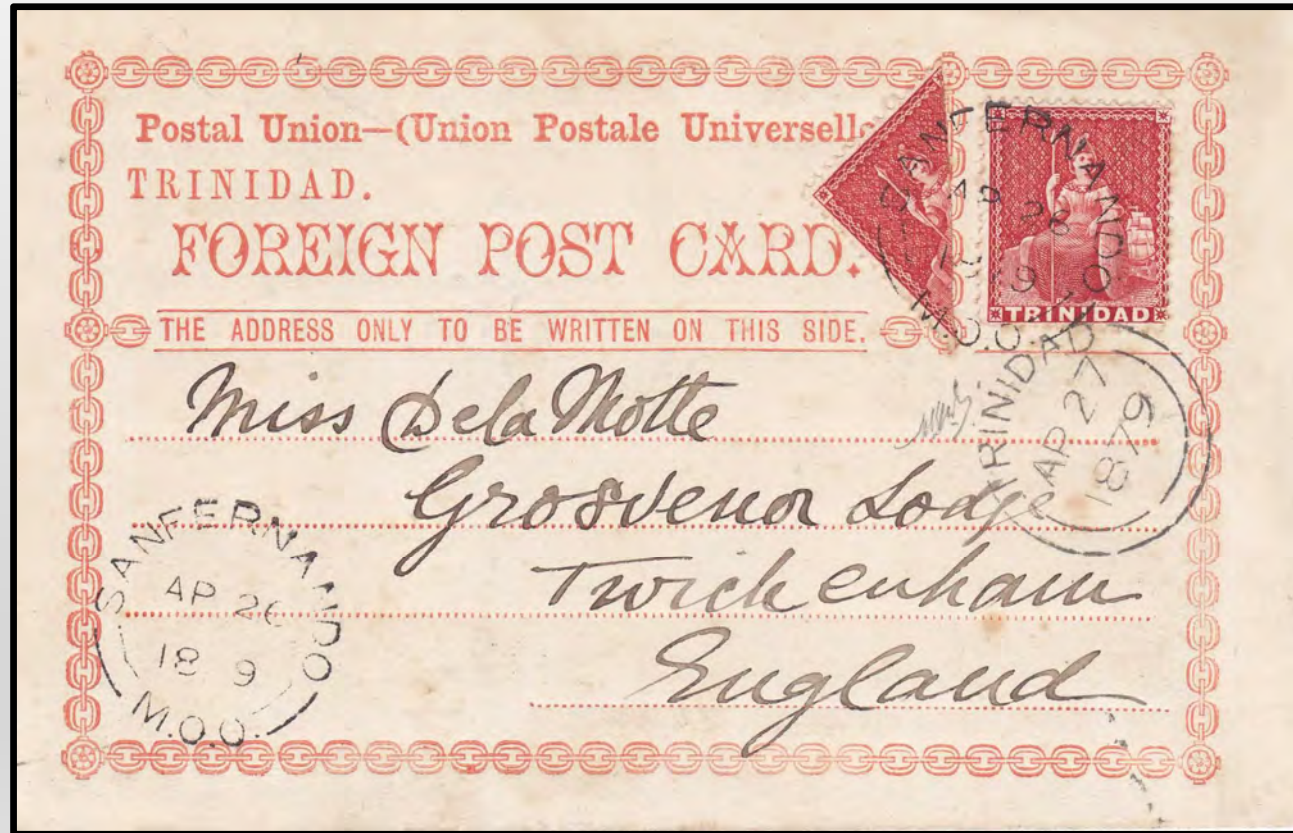
(Period April to December 1882, up to March 1883)

- ❖ vertical bisect
- ❖ diagonal bisect

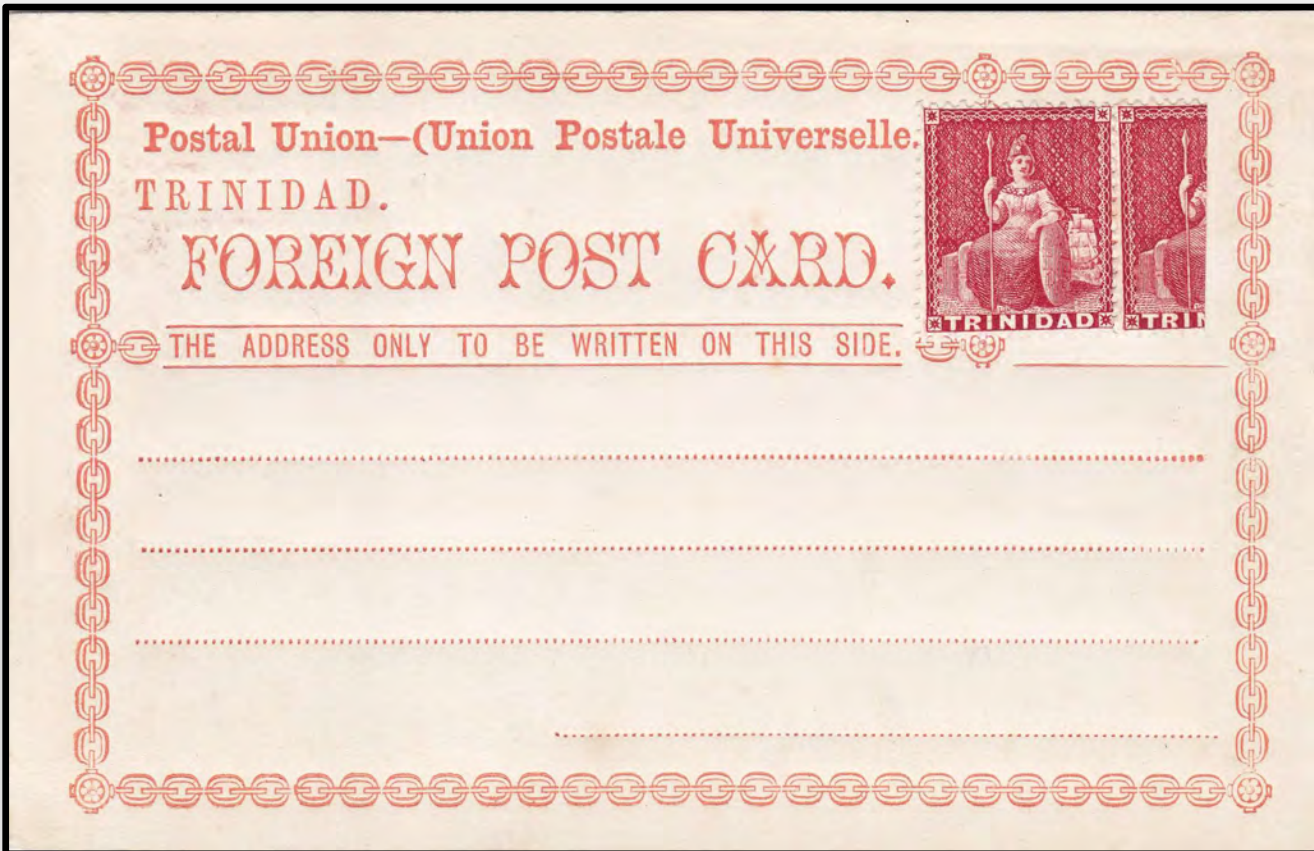
BISECTED STAMPS 1879 -1883

- **1d lake, Perf 14 of 1876**
(Period: April, June, July 1879)
- ❖ **diagonal bisect**

Rare to very rare early use, dated **April 27, 1879** showing the 1876 1d with bisected 1d for the **1 1/2d** rate to countries of the UPU. Scare San Fernando M.O.O. strike cancelling stamps.



BISECTED STAMPS 1879 -1883



➤ **1d lake, Perf 14 of 1876**
(Period: April, June, July 1879)

❖ **vertical bisect**

New cards were sold with a **1d and 1/2d** stamp already fixed to the Foreign Post Card.
Provenance: Ascher

BISECTED STAMPS 1879 -1883

- **1d rosy-carmine, Perf 14 of 1882**
“ONE PENNY” Provisional
*(Period April to December 1882,
up to March 1883)*



Cover to **St. Vincent** dated **November 27, 1882** with the bisect of 1d rosy-carmine '**ONE PENNY**' and two manuscript 1d on 6d Provisionals for the 2 1/2d rate.

BISECTED STAMPS 1879 -1883

- **1d manuscript on 6d**
(Period: January to March 1883)

Cover to **England**, franked with a strip of three 1d manuscript surcharge over 6d and single "HALF PENNY". **A diagonally bisected 1d manuscript over 6d makes the 4d.** Provenance: Burrus



BISECTED STAMPS 1879 - 1883





THANK YOU