

# Virgin Islands

1922 (Mar)-1928 Perf. 14

Wmk Mult Crown CA



A Die Proof of the Keyplate design handstamped 'BEFORE HARDENING' and dated in pencil '12/1/22'.



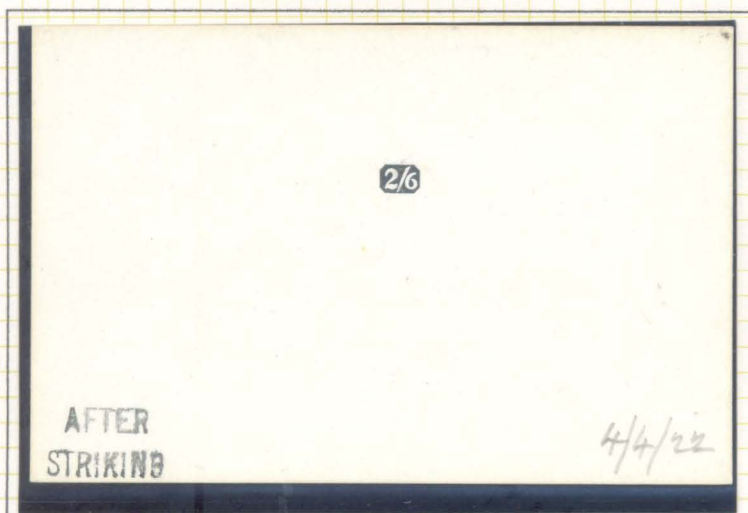
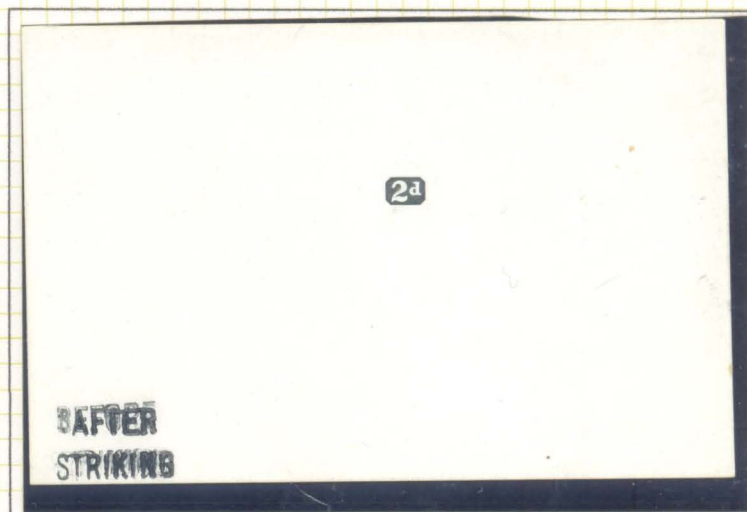
A Die Proof of the 1/2d value tablet handstamped 'AFTER STRIKING' and undated. As there is no guide as to its origin, a manuscript 'Virgin Is.' has been added.

# Virgin Islands

1922 (Mar)-1928 Perf. 14

Wmk Mult Crown CA

A Die Proof of the 2d value tablet handstamped 'BEFORE STRIKING' in error and subsequently over stamped 'AFTER STRIKING', undated.



A Die Proof of the 2s.6d value tablet handstamped 'AFTER STRIKING', and dated in pencil '4/4/22'.

# Virgin Islands

1922 (Mar)-1928 Perf. 14

Wmk Mult Crown CA



The 4 values overprinted **SPECIMEN**  
(Samuel Type D12)



# Virgin Islands

1922 (Mar)-1928 Perf. 14

Wmk Mult Crown CA



A Plate 1 block of 12 of the purple on pale yellow 3d.



A Plate 1 block of 12 of the black on emerald 1s.

# Virgin Islands

1922 (Mar)-1928 Perf. 14 Wmk Mult Crown CA



A Plate 1 block of 12 of the black and red on blue 2s.6d.

# Virgin Islands

1922 (Mar)-1928 Perf. 14 Wmk Mult Script CA



The set overprinted **SPECIMEN** (Samuel Types D12 & D16)  
or perforated **SPECIMEN** (Samuel Type D19)



Three values overprinted **SPECIMEN** (Samuel Type D9)

# Virgin Islands

1922 (Mar)-1928 Perf. 14 Wmk Mult Script CA



# Virgin Islands

1922 (Mar)–1928 Perf. 14

Wmk Mult Script CA



A Plate 1 corner marginal block of 4 of the 1/2d dull green.



A Plate 1 corner marginal block of 4 of the 1d rose-carmine with a single Jubilee line.



A Plate 1 corner marginal block of 4 of the 1d bright violet.

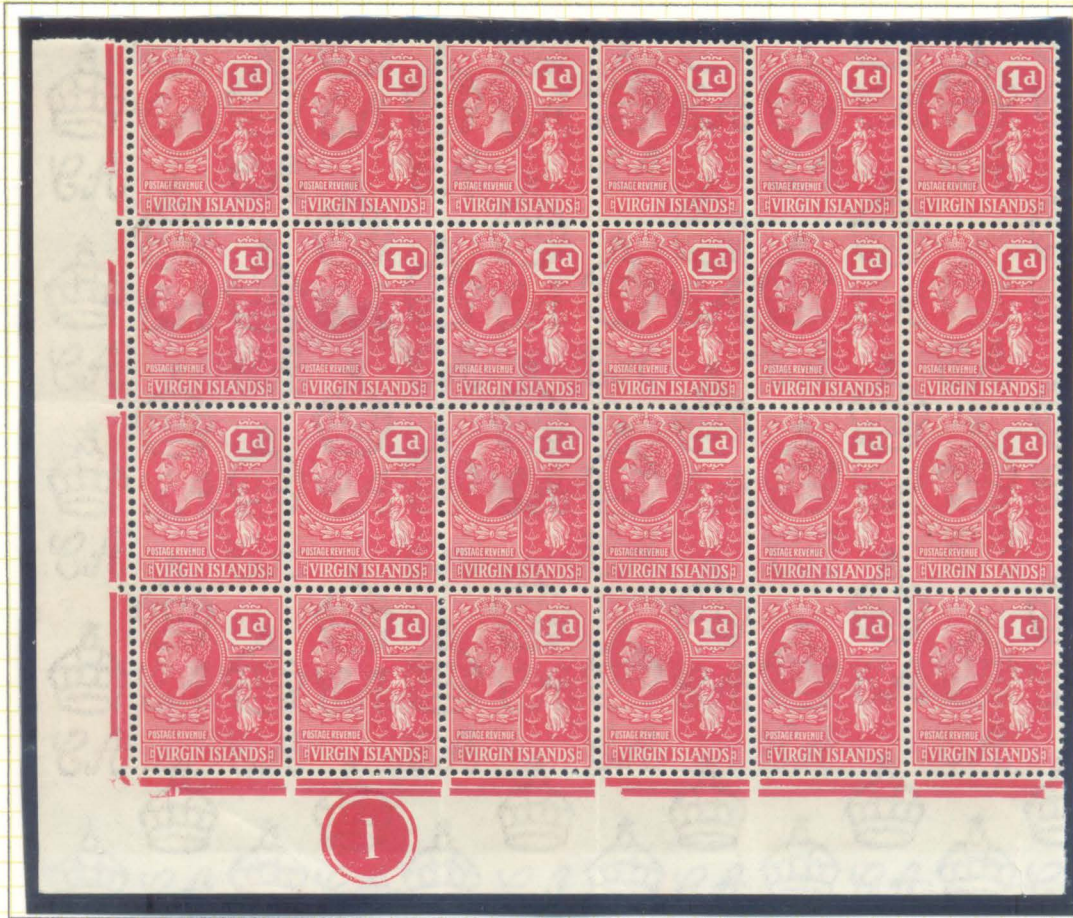


A Plate 1 corner marginal block of 4 of the 1d scarlet.



# Virgin Islands

1922 (Mar)-1928 Perf. 14 Wmk Mult Script CA

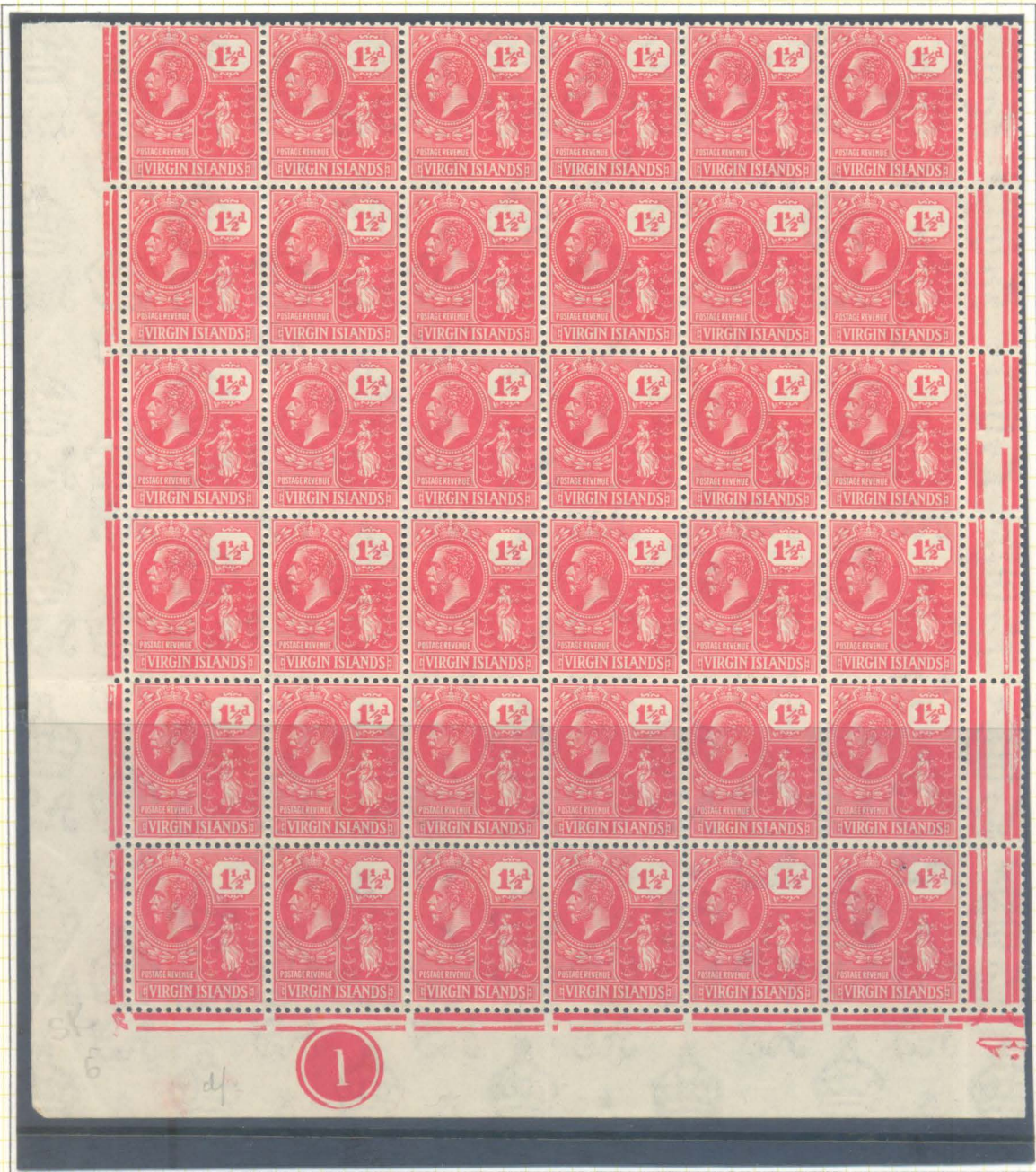


A Plate 1 corner marginal block of 24 of the 1d rose-carmine, this time with two Jubilee lines.

# Virgin Islands

1922 (Mar)-1928 Perf. 14

Wmk Mult Script CA



A Plate 1 corner marginal block of 36 of the 1½d carmine-red.

# Virgin Islands

1922 (Mar)-1928 Perf. 14

Wmk Mult Script CA



A Plate 1 marginal block of 18 of the 1½d venetian red.



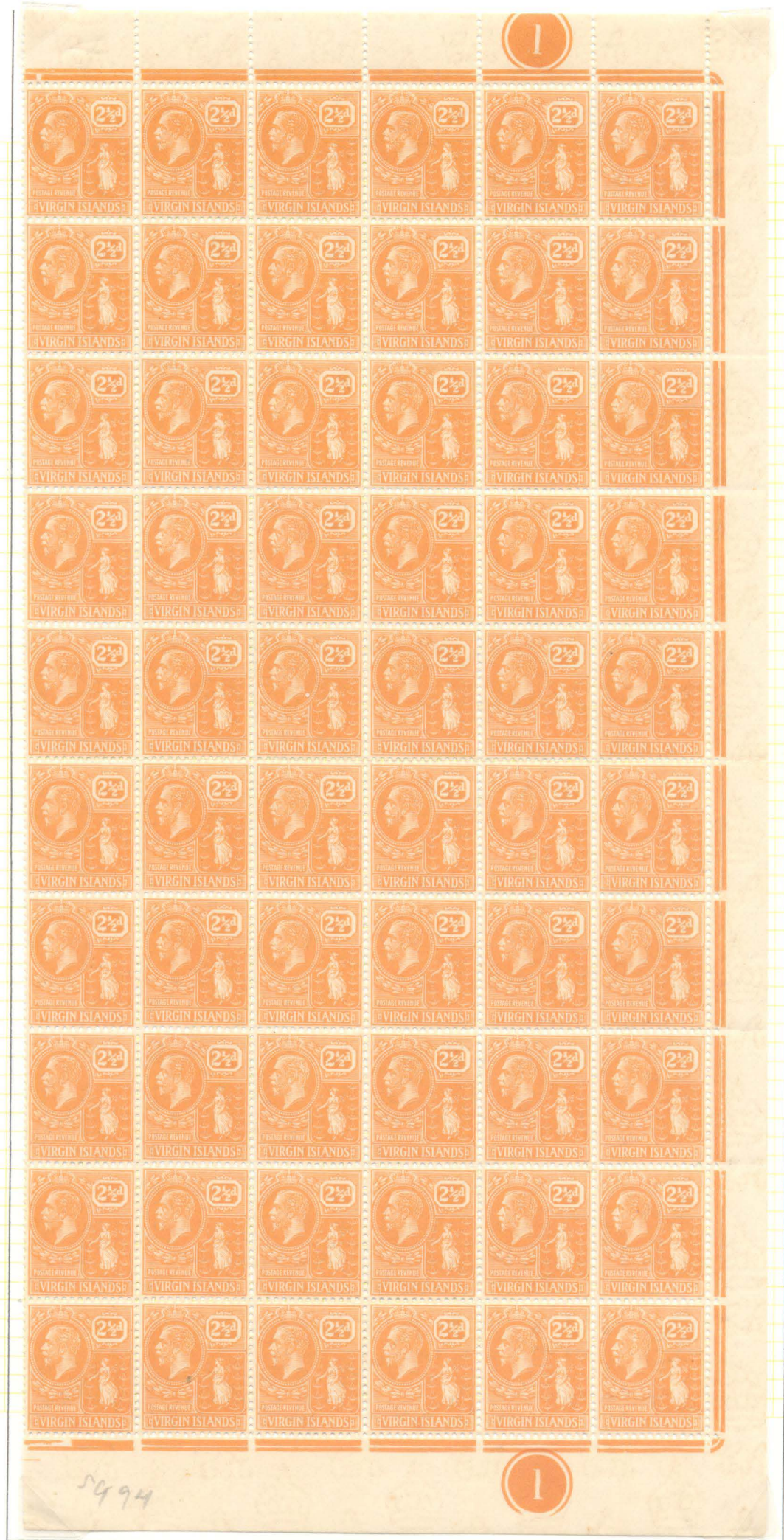
A Plate 1 marginal block of 4 of the 2d grey.



A Plate 1 marginal block of 4 of the 2½d pale bright blue.

# Virgin Islands

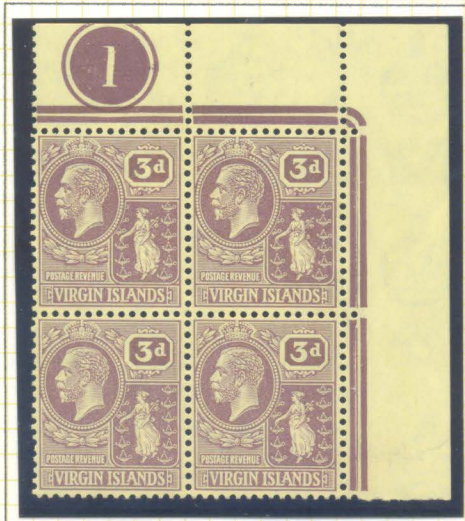
The right-hand pane of the 2½d dull orange showing Plate No. 1.



# Virgin Islands

1922 (Mar)-1928 Perf. 14

Wmk Mult Script CA



A Plate 1 corner marginal block of 4 of the 3d purple on pale yellow.

# Virgin Islands

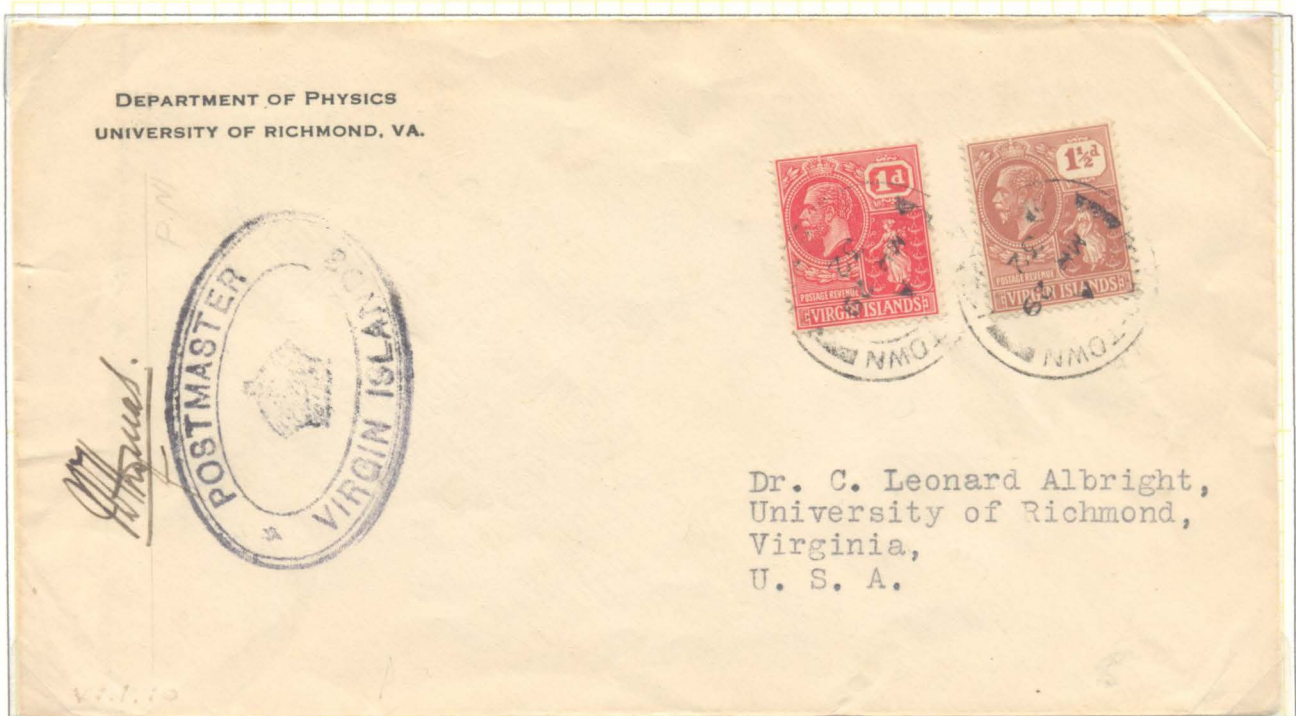


A 1d postal stationery envelope bearing two 2d grey adhesives and addressed to Seattle, Washington (D.C.?) and franked with a Tortola cds dated 18 April 1923.



A registered cover to the UK bearing two 3d adhesives and franked with a Tortola cds dated 15 March 1927..

# Virgin Islands



A cover addressed to Richmond, Virginia bearing 1d and 1½d adhesives and franked with a Road Town cds dated 29 March 1932. It also bears a handstamp of the Postmaster of the Virgin Islands and what is assumed to be his signature.



A very late philatelic cover locally addressed and dated 30 July 1938.

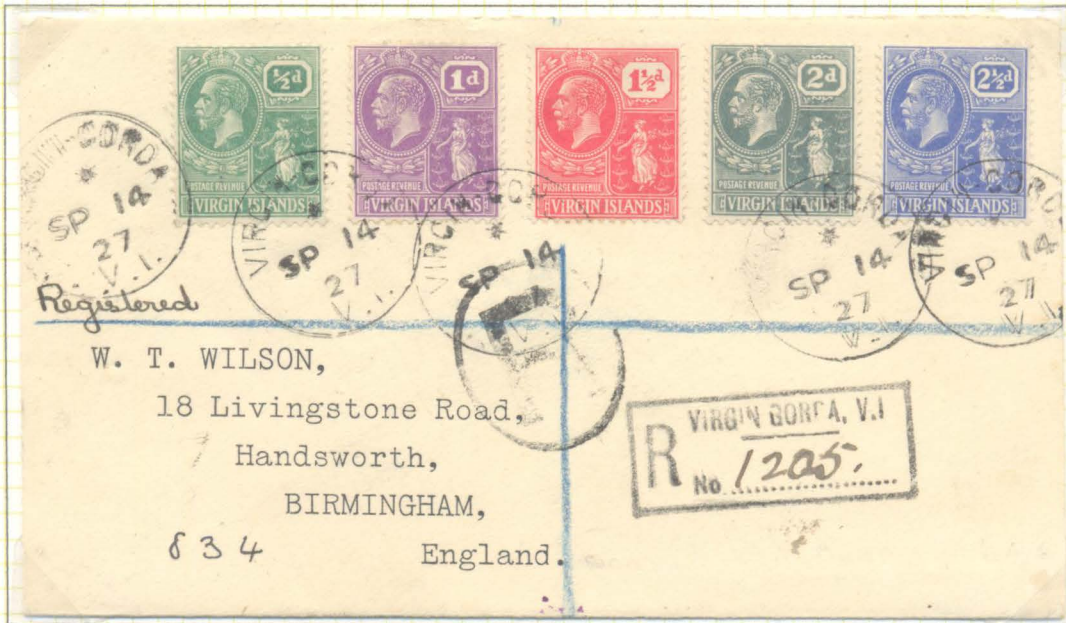
# Virgin Islands



A philatelic cover, seemingly posted on the last day of the use of these adhesives and franked with an Anegada cds dated 30 July 1930.



# Virgin Islands



A philatelic 'Wilson' cover stamped with a Virgin Gorda cds dated 14 September 1927.



A philatelic 'Meister' cover to Holyoke, Colorado stamped with a Virgin Gorda cds dated 26 January 1926.

# Virgin Islands

A locally addressed philatelic cover bearing a 1d, 1½d and 2½d adhesive postmarked by a Road Town cds in black (Oliver V22).



Another locally addressed philatelic cover bearing a 1d, 1½d and 2½d adhesive postmarked by a Road Town cds this time in purple (Oliver V22).



# Virgin Islands



A cover addressed to Australia and franked with a West End cds in black dated 10 November 1930.



A locally addressed cover franked with a West End cds in mauve dated 9 September 1925.

# Virgin Islands



In 1926 the design of this definitive was used for a postal stationery envelope. This registered cover is addressed to the USA, and supplemented by additional 2½d and 2d adhesives. They are not often seen commercially used.