

BRITISH CARIBBEAN PHILATELIC JOURNAL

FEBRUARY 1970
VOL. 10 NO. 1
WHOLE NO. 53

UNIT NO. 27
OF THE APS

published by THE BRITISH CARIBBEAN PHILATELIC STUDY GROUP

EDITOR: COL. FRED F. SEIFERT, 3106 FLORIDA STREET NE, ALBUQUERQUE, NM 87110, U.S.A.



GALE RAYMOND, TOM GIRALDI, CHARLES SAWYER, J.V. SAUNDERS AND EDDIE ADELSON
ARRIVING AT THE FOX HILL, N.P. POST OFFICE. *Photograph by Morris Ludington*

IN THIS ISSUE:

PRESIDENT'S PAGE.....	2	POSTMARK NOVICE ON NEW PROVIDENCE....	3
MEMBERSHIP FEES FOR 1970 DUE.....	6	JAMAICA "T" TOWN POSTMARKS.....	7
ANTIGUA ADDENDA.....	12	BAHAMAS NEWS AND NOTES.....	14
MORE MISSENT MARKS OF THE BWI.....	15	MORE PRINCESS ALICE APPEAL MARKS....	16
TO MONTSERRAT IN QUEST OF INK.....	17	OUR SECRETARY REPORTS.....	23
NEW ISSUES.....	24	BITS AND PIECES.....	26
1969 TREASURER'S REPORT.....	27	DEFINITIVES SERVE AS TRINIDAD DUES..	28
PERSONAL MENTION.....	29	AND AS WE GO TO PRESS.....	31

SUPPLEMENT: INDEX OF WHOLE NUMBERS 47 THROUGH 52 (1969).



THE BRITISH CARIBBEAN PHILATELIC JOURNAL

Published bi-monthly in the even numbered months. Available only to members of the B.C.P.S.G. with subscription included in membership fee of \$4.20 per annum in U.S. Funds. Membership application forms and additional information may be obtained from Membership Chairman or U.K. Representative.

PRESIDENT

Stanley C. Durnin

VICE PRESIDENT

Dr. John C. Arnell

SECRETARY

Bryan J. Walker
285 Parkhurst Drive
Fredericton, N.B.
Canada

TREASURER

Mark W. Swetland
102 Woodland Road
Madison, NJ 07940
U.S.A.

ASST. TREASURER &
U.K. REPRESENTATIVE

Alfred J. Branston
144 The Avenue
Highams Park
London E.4
England

PUBLIC RELATIONS

Charles E. Cwiakala

MEMBERSHIP CHAIRMAN

Alfred N. Johnson
2610 Virginia St.
Baytown, TX 77520
U.S.A.

ADVERTISING

Robert Fashingbauer
Dr. R.A. Ramkissoon

LIBRARIAN

Robert P. Lovett
R.D. #1
Newtown, PA 18940
U.S.A.

PRESIDENT'S PAGE

I know that all of you will be delighted to read in our Treasurer's report on a later page of this issue that our Group income for 1969 was far in excess of expenditures. This assures us of sufficient funds to continue producing the high quality Journal that we now have become accustomed to for at least another year. However, our surplus will soon be dissipated if we do not continue to supplement our normal income from membership dues with funds from other sources.

With our present membership of approximately 340, we do not desire much more growth in numbers, for our Editor feels that he is approaching the limit in the number of Journals he can prepare and send out. But the fact remains that there will be some losses that must be made up to retain our present size, so it is essential that we continue to recruit others to take their place. With this issue of the Journal, there is enclosed a membership application form. If you know someone who would make a good member, show him a copy of the Journal and see if you can sell him on the advantages of signing up.

Much of our income in 1969 came from our auctions. Your continued support of the auction program will be needed to maintain this important source of funds. Donation lots are always most welcome, as well as those to be sold on commission. Apart from profit to the Group, our auctions play an important role in enabling you to dispose of surplus material or to obtain something you need. Bob Topaz is doing his part. How about you?

PHILYMPIA plans are showing progress. Again I ask that any who plan to attend let me know. This is applicable to our U.K. members as well as those in the U.S., Canada or elsewhere. Let Editor Fred know and he will get the info to me.

Stan

A Postmark Novice on New Providence Island

by Charles E. Sawyer

After 36 years at stamp collecting, I can hardly be considered a novice, but getting behind a post office counter, searching the drawers and crannies, and banging away with the various TRD's, CDS's and anything else to which ink would stick, has just not been part of my philatelic world. This deficiency in my philatelic experience was thoroughly rectified last November when I attended the BCPSG Convention at FLOREX '69 and the subsequent junket to Gambier on New Providence Island in the Bahamas.

FLOREX was great and Gambier was fun, but the real thrill came to me on the day after our visit to Gambier, November 13th, 1969. Shortly after noon of that day, BCPSGers Eddie Adelson, Tom Giraldi, Morris Ludington, Fred Seifert, Gale Raymond and I, escorted by John V. Saunders of the Bahamas Post Office Department, loaded ourselves into two of Fred Bones' taxis. We then headed out on an "inking expedition" and tour of the "other" post offices on the island.



TOM GIRALDI (LEFT) AND CHARLES SAWYER (SEATED ON THE CURB) PREPARE COVERS OUTSIDE GRANTS TOWN POST OFFICE.

Our first stop was the GRANTS TOWN Post Office, which is located at the corner of Blue Hill Road and Vesey Street, about a mile southwest of Rawson Square. When we arrived, patrons were in line at the two windows which open directly onto a covered sidewalk. John Saunders took us upstairs to the Parcel Post Section where we were introduced to the postmaster, Emil Saunders, who took time out from his duties to help us dig out all of their stamping devices.

**This is the only notice
that will be issued.**

SECOND NOTICE

FINAL NOTICE

The three instructional rubber stamps shown above were found at the Parcel Post window. They are normally stamped in purple. Also at this window we discovered a CDS that was not previously recorded. It is shown as the lower of the two CDS to the right of the above photo. It will be noted that the letters are smaller than those in the upper mark which is the one used at the mail processing desk and at the stamp windows. Both marks are Ludington/Raymond Type 7.

The main windows had seven rubber handstamp devices as shown below. The line below "EXPRESS" reads "DELIVERY", but through wear it has become nearly a solid line. The boxed Registration mark is provided for use when the office is out of the regular numbered registration labels. The black circular ink pad that was in regular use had been worn down through several layers in the middle, so that it was difficult to obtain clear impressions of some of the longer straight-line rubber stamps. This also tended to wear out the devices themselves at their extreme ends.



The "dead letter office" was an amazing sight. It consisted of a table in one corner of the incoming mail room with literally thousands of undeliverable letters stacked on it in neat rows. I noted covers from all over the world. Postmaster Saunders stated that it was several years accumulation, but that he didn't know what to do with it. Naturally, we offered to take it all off of his hands, but he politely declined.

Our next stop was at FOX HILL Post Office which is located about two miles west of New Providence's eastern tip. It had just recently moved into a new building of what I would call Caribbean Colonial style. (See illustration on front cover.) The location, on Bernard Road a bit West of its intersection with Fox Hill Road, is actually in Sandilands Village rather than Fox Hill.

When we first walked in the back door, Postmaster Hubert McKenzie was out, but the assistant postmistress made us feel right at home. We immediately went to work, first locating the regular steel CDS which was out in the open next to the stamp pad on the table used for processing mail. When we inquired about the old FOX HILL TRD, we were informed that it was no longer in use. However, with prompting from Gale Raymond, the assistant postmistress undertook a search and found it in a box in the back of a drawer in the postmaster's desk. After she had changed the date on the TRD, we revived it for the day. John Saunders informed us that



this TRD is now only used by the postmaster on his official mail, and would normally require the postmaster's initials as well.

I wanted to Air Mail/Register a letter, and when I inquired if any of the regular air mail labels were available, the assistant postmistress opened a drawer in front of me that contained no less than seven rubber stamps. Included were the Air Mail as well as the 'provisional' registration marking. Needless to say, I asked to have the cover posted with the Registration handstamp, and I was then presented with the label that would normally have been used...Oh Joy!

The stock of postage stamps at the window proved inadequate for our demands, but

just then Postmaster McKenzie arrived to save the day. After introductions, he opened the vault and supplied the required adhesives. He also was able to provide a supply of small size registration envelopes.

The seven Fox Hill rubber handstamps and the steel die CDS are shown below.

SECOND CLASS AIR MAIL

RETURN RECEIPT REQUESTED

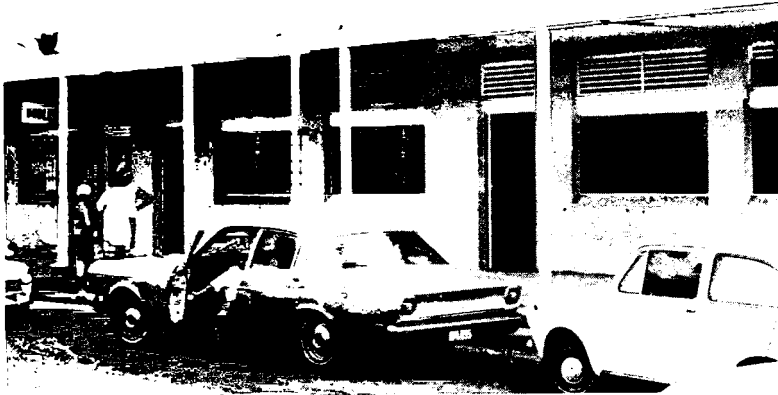
FOX HILL
R. No.



EXPRESS
DELIVERY

UNCLAIMED AIR MAIL REFUSED

The next post office on our agenda was **MACKEY STREET**, which is no longer located on the street of that name, but rather on Ernest Street. It was easier to retain all of the cancelling devices when they moved there in 1967 than to change them as was done when the **SHIRLEY STREET** Post Office was moved to Mackey Street. The volume of mail here approaches that of the G.P.O. in downtown Nassau, so we were not allowed the freedom here that we had enjoyed in the smaller offices.



MACKEY STREET POST OFFICE ON ERNEST STREET



Postmaster Nathaniel Levarity took us to the back of the post office and introduced us to the employees working in the area. In a back corner we discovered the machine canceller, and at our request it was put into service. Apparently it had been re-inked shortly before, for the first specimens sent through it came out spotted with ink drops and badly smudged. This finally cleared up, and some suitable postmarks were obtained. We also found a roll of the printed tape used to officially seal items found open or damaged in the mails, and were given samples for the BCPSG records.

I asked Postmaster Levarity if I might have examples of the rubber handstamps in use there. He took me to a Mrs. Bethel who was recording registered mail with another employee. She opened the drawer of the table at which she was working and pulled out nine different rubber stamps. Included was the old

double-line MACKEY STREET/POST OFFICE, now badly deteriorated at the ends, but still an exciting find. We quickly posted about a dozen covers using it as the postmark. It and the other rubber stamps, as well as the machine mark are shown below. The SECOND CLASS AIR MAIL stamp was originally boxed, but the two ends have been worn down to the point where they will no longer register.



EXPRESS
DELIVERY

2nd NOTICE

REFUSED
RETURN TO SENDER

RETURN TO SENDER

3rd NOTICE

FINAL NOTICE

SECOND CLASS AIR MAIL

UNCLAIMED
RETURN TO SENDER

We also discovered that three types of steel die CDS were in current use at the Mackey Street Post Office, types 8 I, 8 II and 8 III per the Ludington/Raymond Handbook.

When we had posted the last of our covers, we assembled in front of the building, piled into the taxis and made our way back to the Prince George Hotel. There we hashed over the places we had been, the discoveries we had made, how completely cooperative and courteous the postal employees had been, and what positive fun it was to do something like this with friends who think like you do.

No, I didn't collect Bahamas before this trip...but would you believe that I do now.

MEMBERSHIP FEES FOR 1970 ARE NOW DUE!

Enclosed with this issue is a form to facilitate payment of your annual dues for calendar year 1970. Despite increased postage and printing costs, we are holding the rate at that for 1969. By making prompt payment you will help us keep administrative costs at a minimum and make life easier for your Editor and your Treasurer.

Don't forget that LIFE MEMBERSHIP is available at the following rates in U.S. funds or equivalent: Age 50 years and under -- \$100; Age 51 to 60 years -- \$80; Age 61 years and over -- \$50. If desired, payment may be made in installments spread over not more than one year.

Please send your payment now to Mark Swetland or Al Branston. If for any reason you are unable to continue your membership please let us know and spare us the expense of mailing further Journals and notices.

THE CHRONOLOGICAL POSTMARK HISTORY
OF THE POST TOWNS OF JAMAICA
(Continued)
BY ROBERT TOPAZ

TAYMOUNT Clarendon Opened 13 February 1967

1. TRD Type 37 violet ink 8 MR 67 22 AU 67
2. MSR 1968 * 27 JA 69

THATCHWALK St. Ann Opened 15 April 1966

1. TRD Type 37 violet ink 11 MY 66 16 MY 68
Asterisks located below center.

Forwarding Office: Aenon Town

THOMPSON TOWN Clarendon Opened 15 November 1913

1. D.R. 28 mm, 3 mm letters, dots 11 JY 17 20 JY 39
2. B 1 (Issued 18 JY 39) * 20 AU 39 18 AU 62
Supposed to exist dated 4 JU 39??
3. TRD Type 37b black ink 2 AU 56 30 MY 57
4. MSR (Issued 10 SP 56) * 5 DE 56 1 MR 67
Two dies were issued.

Forwarding Office: Four Paths

THORNTON St. Elizabeth Opened ?

1. TRD Type 37a violet ink 1 JU 63 17 FE 64
2. MSR * 11 MY 64 21 OC 69

Forwarding Office: Lacovia

TIME & PATIENCE St. Catherine Opened 1961

1. TRD Type 37a violet ink 25 NO 61 2 DE 61
2. MSR * black ink 23 JA 63 22 JU 68
* violet ink 9 AU 68

Forwarding Office: Linstead

TITCHFIELD Portland Opened about 1774

The office of this name was closed before 1818, and at this time (1969) no marks are recorded from the early functions of this office. It was reopened at the resort hotel at Port Antonio, Titchfield Hotel, in early 1903 and was kept open during the tourist season only.

1. TRD Type 11 29 x 15½ mm, violet ink 13 JA 03 5 MY 03
There are at least two dies of these TRD marks. Because of the terrible

distortions of these marks, it is difficult to give definite earmarks on them. The first die had the "03" in the mark, the letters were more closely bunched, and the "J" is about under the "C" in Titchfield. There is a stop after Jamaica.

2. TRD Type 11 29 x 15 mm, violet ink 29 JA 04 28 AP 04
See notes above. The "J" is a bit more to the left than mark #1, but serious distortions of this mark produced many positions.
3. D.R. 29 mm, 2 mm letters, dots 23 DE 05 9 FE 09
Thin inner ring.

The hotel burned down in January 1910 and was rebuilt in 1911.

TOLL GATE Clarendon Opened 16 January 1906

1. D.R. 28½ mm, 2½ mm letters, dots 2 AU 24 29 AU 55
Noted on a Falls stamp but no year legible. Should be noted earlier than these dates.
2. MSR w/o * 26 MR 56 27 JY 67

Forwarding Office: Four Paths

TOP HILL St. Elizabeth Opened 8 September 1943

The post office at Southfield was moved to this location and the name changed on the above date.

1. TRD Type 39 violet ink 8 SP 43 9 FE 44
Date stamped separately.
2. B 2 * black ink 22 JA 44 29 JA 69
* violet ink 31 MR

A proof strike of a B 1 mark dated 4 AU 44 is known, but as yet no postal usage has been recorded

Forwarding Office: Santa Cruz

TOP MOUNTAIN St. Catherine Opened 9 December 1966

1. TRD Type 37 violet ink 21 DE 66 14 AU 67

Forwarding Office: Troja

TORRINGTON St. Andrew Opened in late 1962

1. TRD Type 37d violet ink 24 DE 62 11 NO 65
black ink 30 JA 64 9 FE 64

There were apparently two dies of this mark. Jamaica is well to the left of center in these dies.

2. TRD Type 37 violet ink 8 MY 65 30 MR 67
About 15 AU 66 a segment of the inner oval adjacent to the left-hand asterisk broke away from the rest of the oval. The asterisks are well below center.
3. TRD Type 37 violet ink 6 MY 67 11 JU 68

This is almost identical to mark #2, but slightly smaller and the asterisks are almost centered.

- | | | | |
|-------------|--------------|----------|----------|
| 4. MSR 1968 | * violet ink | 1 JU 68 | 22 JY 68 |
| | * black ink | 22 JY 68 | 2 OC 69 |

Forwarding Office: Direct

TOWER HILL St. James Opened 22 September 1959

- | | | | |
|--|--------------|----------|----------|
| 1. TRD Type 37a | violet ink | 21 SP 59 | 5 OC 59 |
| The oddity of the 21 SP 59 date is not easily explained unless it be a mistake as the cover has been verified. | | | |
| 2. MSR | * violet ink | 5 JA 60 | 1 MY 61 |
| | * black ink | 18 FE 61 | 21 AU 67 |
| 3. MSR 1968 | * | 27 JU 68 | 17 JA 69 |

Forwarding Office: Reading

TOWER ISLE St. Mary Opened 21 February 1949
Located in a resort hotel of that name east of Ocho Rios.

- | | | | |
|-----------------------------|------------|----------|----------|
| 1. TRD Type 48b | violet ink | 21 FE 49 | 28 JA 53 |
| 2. Oval (Issued April 1950) | | 9 MR 51 | 9 MY 55 |
| 3. B 3 (Issued 1 Jan. 1954) | * | 1 SP 55 | 1 MY 69 |
| 4. MSR | * | 8 MY 58 | 12 FE 64 |

Forwarding Office: St. Ann's Bay

TOWNHEAD Westmoreland Opened 23 January 1967

- | | | | |
|----------------------------------|------------|----------|----------|
| 1. TRD Type 37 | violet ink | 27 JA 67 | 13 JU 68 |
| The name is written as one word. | | | |
| 2. MSR 1968 | * | 7 AU 68 | 28 OC 68 |

Forwarding Office: Frome

TRANQUILITY Portland Opened 11 November 1949

- | | | | |
|-----------------------------|------------|----------|----------|
| 1. TRD Type 39 | violet ink | 11 NO 49 | 9 MY 50 |
| 2. Oval (Issued April 1950) | violet ink | 11 JY 50 | 15 SP 50 |
| | black ink | 3 AP 51 | 19 NO 64 |
| 3. TRD Type 37a | violet ink | 20 AP 61 | 27 JY 63 |
| | black ink | 29 JA 64 | 1 FE 64 |
| 4. MSR (Issued 18 DE 64) | * | 10 FE 65 | 15 MR 68 |

Forwarding Office: Buff Bay

TRAVELING POST OFFICES--T.P.O's are not being covered in this listing.

TREADWAYS St. Catherine Renamed September 1956
Formerly called Bermaddy.

- | | | | | |
|----|--------------|-------------------------|----------------------|----------|
| 1. | TRD Type 37b | violet ink
black ink | 17 SP 56
28 JA 57 | MR 57 |
| 2. | TRD Type 46b | violet ink | 1 IC 56 | 18 NO 57 |
| 3. | MSR | * | 17 MY 58 | 31 MR 69 |
| 4. | MSR 1968 | * | 22 NO 68 | |

Forwarding Office: Linstead

TREASURE BEACH St. Elizabeth Opened ?
Formerly called Pedro Plains

- | | | | | |
|----|--|------------------------------------|---------------------|----------------------|
| 1. | TRD Type 38x | violet ink | 2 DE 40 | 3 AU 44 |
| | Name in seriffed caps. | | | |
| 2. | TRD Type 39 | violet ink
violet ink, ms. date | 28 NO 44
6 AP 45 | 27 MR 45
12 MY 45 |
| 3. | B 1 (Issued 19 MY 45) | * violet ink
* black ink | 8 JU 45
29 AU 47 | 17 DE 46
AU 56 |
| 4. | MSR | * | 8 SP 60 | 24 JA 69 |
| 5. | TRD Special | violet ink | 29 JY 65 | 6 AU 65 |
| | A TRD similar to Aguilar type 45a was used at Kingston for a special mailing during this period. The mailing was for the Aluminium Co. at Treasure Beach, but because of the shape (tubular) and bulk (to all stockholders) it was handled at the G.P.O. | | | |

Forwarding Office: Lacovia

TRINITYVILLE St. Thomas Opened in December 1877

- | | | | | |
|----|--|---------|----------|----------|
| 1. | P11 24 mm (Issued 18 JY 78) | Index C | 9 MY 80 | 2 MY 35 |
| 2. | A.83 Oblit Type M (Sent out 2 OC 78) | | 9 MY 80 | 15 SP 84 |
| | This was the last obliterator issued to Jamaica. | | | |
| 3. | D.R. 28 mm, 3¼ mm letters | | 15 OC 35 | 10 JA 69 |
| | Trinity Ville is two words in this mark. | | | |

Forwarding Office: Direct

TROJA St. Catherine Opened 15 May 1897

- | | | | | |
|----|--------------------------------|-----------|----------|----------|
| 1. | TRD Type 8 | black ink | 27 MY 97 | 2 JU 97 |
| | No year plug in mark. | | | |
| 2. | D.R. 28 mm, 3 mm letters, dots | | 22 DE 97 | 13 JU 08 |

- | | | | |
|--|--|----------|----------|
| 3. D.R. 28½ mm, 2 3/4 mm letters, dots | | 30 SP 16 | 26 DE 66 |
| 4. MSR (Issued 7 OC 55) * | | 8 FE 56 | 26 JY 67 |

TROJA RAILWAY

St. Catherine

Opened before 1900

- | | | | |
|--------|----------|----------|----------|
| 1. S1b | blue ink | 2 NO 01 | JA 22 |
| 2. S3 | blue ink | 9 FE 10 | 28 SP 15 |
| 3. S4a | blue ink | 22 AU 23 | 16 SP 24 |

TROPICAL PLAZA

St. Andrew

Opened in December 1960

- | | | | |
|-----------------|------------|----------|----------|
| 1. TRD Type 37a | violet ink | 24 DE 60 | 29 MR 62 |
| 2. MSR | * | 5 DE 62 | 6 DE 67 |

Forwarding Office: May Pen

TROUT HALL

Clarendon

Opened 2 September 1929

- | | | | |
|------------------------------|------------|----------|----------|
| 1. TRD Type 24 | violet ink | 16 SP 29 | 11 NO 29 |
| 2. D.R. 29 mm, 3½ mm letters | | 18 DE 29 | 18 JA 69 |

Forwarding Office: Four Paths

TROY

Trelawney

Opened 14 October 1896

- | | | | |
|------------------------------------|-----------|----------|----------|
| 1. TRD Type 8 | black ink | OC 96 | |
| 2. D.R. 27 mm, 3 mm letters, dots | | 20 OC 97 | 12 AU 53 |
| 3. Oval (Issued April 1950) | | 29 NO 50 | 5 JA 53 |
| 4. B 3 (Issued January 1954) w/o * | | 30 JU 54 | 9 JA 67 |
| 5. MSR | w/o * | 12 JA 65 | 2 SP 68 |

Forwarding Office: Balaclava

TURNERS

Clarendon

Opened

- | | | | |
|----------------|------------|---------|----------|
| 1. TRD Type 37 | violet ink | 5 JY 65 | 25 MR 68 |
| 2. MSR 1968 | * | 4 NO 68 | |

Forwarding Office: May Pen

TWEESIDE

Clarendon

Opened 21 April 1949

- | | | | |
|-----------------------------|-----------------------------------|----------|----------|
| 1. TRD Type 37 | red ink, ms. date
stamped date | 21 AP 49 | 22 JU 49 |
| | | 12 OC 49 | 20 MY 50 |
| 2. Oval (Issued April 1950) | | 29 MR 51 | 12 MY 69 |

3. MSR 1968 * 23 MY 68 20 AU 68

Forwarding Office: Alston

TYDIXON St. Catherine Opened 16 March 1956

- 1. TRD Type 37b violet ink 16 MR 56 2 JU 56
- 2. MSR 13 AU 56 22 AU 67

Forwarding Office: Lluidas Vale

On page 175 of the October 1969 Journal, STRATHBOGIE #3 should read MSR 1968, per Reg Lant.

ANTIGUA ADDENDA

by WILLIAM G. CORNELL

A recent acquisition is a used copy (A02) of Antigua S.G.24, 1d. carmine red of 1884, wmk. Crown CA with watermark inverted and reversed. Although the "Small Star" watermark of the earlier Perkins Bacon issues occurs in all possible orientations, as discussed in the Journal earlier by Mark Swetland, I have never heard of the Crown CA watermark in any but the normal orientation. Can anyone give further examples? How about the Victorian Crown CC watermark? Again, I have never seen anything but the normal orientation.

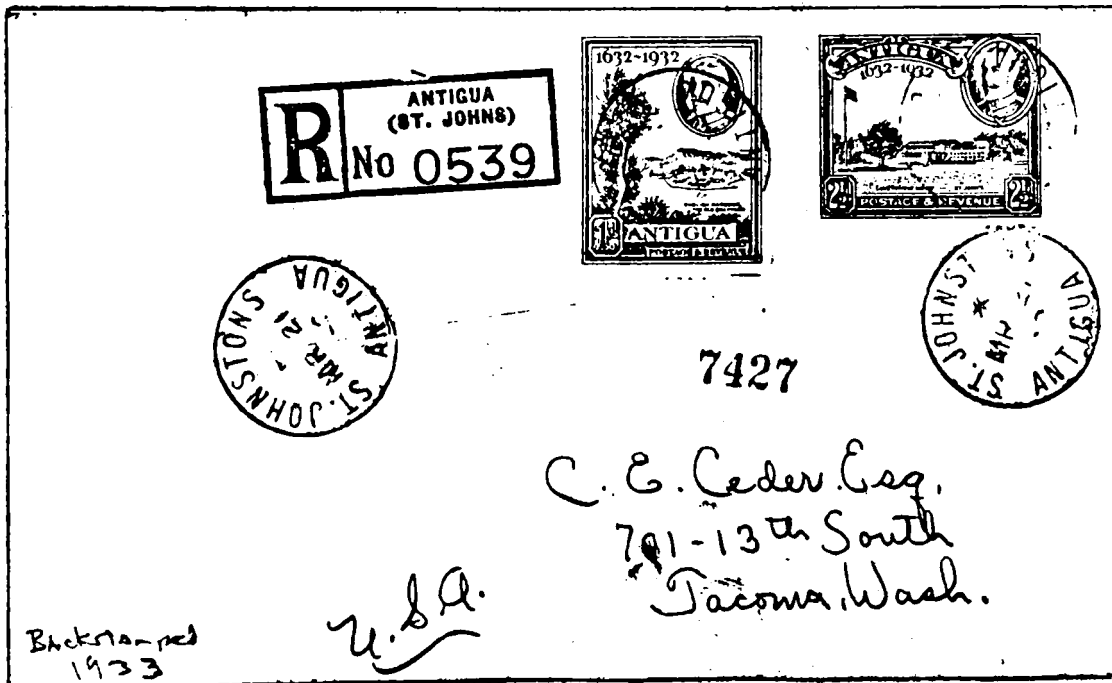
Now that the 1 NO 66 Antigua definitives have had their eighth printing, it is time to review the details of the several printings. The seventh and eighth printings were perf 13½, compared to the previous 11½ x 11. In addition, the last printing was on a glossy paper, so that distinct shades occur on all values. the next issue of the definitives will be the coils. These will be perforated on all four sides, and will probably be drawn from the eighth printing unless a special printing is made for the purpose. The coil stamps are on Antigua, but will not be put on sale until the vending machines arrive. The following table details the eight printings:

VALUE	PRINTING:	1	2	3	4	5	6	7	8	NOTES:
½¢		x		x			x	x		
1		x	x		x			x	x	Printings 7,8 are perf 13½
2		x	x		x	x		x	x	
3		x			x			x		Printing 8 is on glossy paper
4		x				x		x		
5		x				x		x	x	Printing Dates:
6		x					x			
10		x			x			x	x	1-- 1 NO 66
15		x	x		x	x			x	2--27 JU 67
25		x	x		x	x			x	3--14 JY 67
35		x			x				x	4--14 MY 68
50		x			x				x	5--22 OC 68
75		x				x				6--26 NO 68
\$1		x			x				x	7--24 JU 69
\$2.50		x			x				x	8--30 SP 69
\$5		x			x				x	

According to Gil Holmes, Antigua postal rates were increased on 1 JA 70, with aerograms advancing from 15¢ to 20¢, registration fee from 15¢ to 25¢ and the

airmail postage to the U.S. and Canada from 25¢ to 35¢ per half ounce. Since need for the existing 25¢ value will be much less after the rate change, part of the stock of 25¢ definitives (old perf) has been sent to the Crown Agents for overprinting to 20¢. It is expected that the Crown Agents will also overprint some of their own stock, all of which is in the new perf. Thus we may get two perf varieties of the new 20¢ on 25¢ definitive. The present 15¢ aérograms will be overprinted 20¢, probably locally.

The beautiful ST. JOHNSTONS strike on the cover illustrated below is the find of Gale Raymond. A backstamp establishes the year as 1933, giving us a confirmed date of MR 21 33 for this rare CDS. Our best previous data gave us a date of SP 18 3?, with ? being either 2 or 3 (See January 1965 BCPJ). Can anyone extend the range of dates known used?



One sheet of the Deep Water Harbour 2¢ value was discovered in Antigua by Gil Holmes. The second perforation was misplaced vertically, yielding tall oval perfs on all sides of the stamps of Row 2, and on bottom and both vertical sides of Row 1. The block of fifteen has been broken up, and I am the proud possessor of the center strip of three. The sheet number is 00116.

A new KGV cancel of ST. JOHN'S has appeared in the form of one partial strike on a copy of the 1921 3d, wmk CA Antigua. Shown here are tracings of the strike and my possible "completion" of the full cancel. The new and interesting feature is the asterisk above the date. The T of ST appears nearly as tall as the S and does not appear to be underlined, although this could be a short underline in the shape of a dot, plus our old demon "ink spread". This CDS has many of the features of a McFarlane Type 3c as described in the June 1968 BCPJ, except that the index and date are rotated relative to the town and country names, and, of course, the index C has been replaced by the asterisk. Does anyone

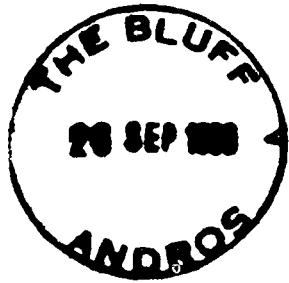


have a ST. JOHN'S strike of the 1903-31 period in the MSR form with an asterisk? Any help in further identifying this mark will be appreciated.

Bahamas News & Notes

 by Gale J. Raymond

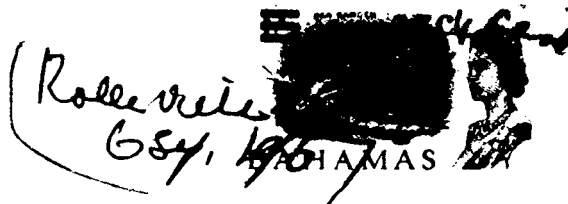
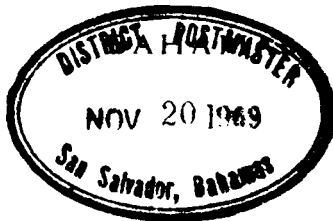
Covers are in from two new postoffices in the Bahamas. THE BLUFF, ANDROS, is located between Kemp's Bay and Long Bay Cays. It opened on 28 July 1969 with K.E. Taylor as Postmaster. The population is about 500, and mail arrives via *M.V. Sea Queen* three times weekly. It's datestamp is a large single-circle TRD of about 36 to 37 mm diameter with large letters, as shown below.



The same TRD type is in use at STANIEL CAY, (Exumas), established 5 Oct. 69, Al Kelly, Postmaster. Population of the cay is about 50, but serves a much larger area and populace.

Oddly, another TRD of this type, but larger, has appeared from FREEPORT, GRAND BAHAMA. Interestingly, the first strike noted was dated 22 Nov. 1969 on a Grand Bahama tracking station cover of APOLLO 12! Distortion make the diameter hard to pin down, but it appears to be about 42 mm. Tom Giraldi reports use of this TRD to 2 Jan. 1970. All strikes are in black ink. The inner circle which can be seen on the illustration above is probably not an intentional part of the stamp, but caused by registration of ink on the base of the stamp.

A Type C-5 TRD has shown up on commercial mail from THE BIGHT, CAT ISLAND in purple or black ink. My earliest commercial "piece" is dated JUL 25 1969. A strike of this TRD is shown above.



At least one new oval TRD has appeared from SAN SALVADOR. It reads DISTRICT POSTMASTER/San Salvador, Bahamas, and is known OCT 30 1969 and later, both on stamps and in conjunction with the rejuvenated San Salvador CDS. KEMPS and MANGROVE CAY have been using their Commissioner's Office TRD's, routinely, in recent months as the normal postal cancels.

The manuscript cancel with 15¢ stamp revised by pen to 4¢ which we described in our June 1969 column (page 109), can now be definitely ascribed to ROLLEVILLE, EXUMA. A second such cover has been found in commercial mail in Nassau. The stamp is similarly down-valued and clearly pen-cancelled "ROLLEVILLE, EXUMA, 6 SEP, 1967." Visiting there recently, I was told only that at that time a temporary schoolteacher served briefly as sub-postmaster, and that for some unrecollected reason the datestamp simply was not available. Only 15¢ stamps

were available, so their value was marked down to 4¢ for the inter-island and local mail. Logical in the out-islands!

Bill McFarlan posted covers franked with U.S. stamps aboard the *M.S. Sunward* on his return from our Bahamas meeting last November. They eventually arrived, datestamped with a very worn, misshapen SHIP MAIL/NASSAU, NOV 13 1969 TRD. A note from Bill explains "I had to give the purser a lecture on the Ship Mail stuff as it was all new to him. He told me if a letter had U.S. postage they just held it until they got back to Miami and vice versa with Bahaman postage."

For certain of the above information I'm indebted to PMG Claude Saunders, Bill McFarlan, Joe Frasketi and especially Eddie Adelson (may his tribe increase!)

MISSENT MARKS OF THE BWI

by J. CHIN ALEONG
& FRED F. SEIFERT

Since publication of our article of the same title in August 1969 Journal, we have received reports of additional Missent Marks from some of our members. These are listed and illustrated below.

- BAHAMAS 2. One line, 78 x 4½ mm, Serif letters with text in quotes. Known April 1952. (by Harvey O'Connor)
- BERMUDA 3. One line, about 86 x 4¼ mm, Sans Serif letters. Known November 1967 in red. (by Tom Giraldi)

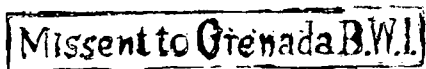
"MISSENT TO BAHAMAS" MISSENT TO BERMUDA



MISSENT TO BRITISH GUIANA

MISSENT TO BELIZE

MISSENT TO BELIZE



- BRITISH GUIANA 4. Circular type, 25 mm diameter. Known Jan. & Feb. 1933 on two "Panton" underpaid covers from Anguilla to Georgetown, Grand Cayman. (by Pam Taylor and Paul Larsen)
- 5. One line, 75 x 3½ mm, Serif letters. Date not stated, but after 1958. (by Pam Taylor)
- B.G. Type 2 reported used in October 1962 by Pam Taylor.
- BRITISH HONDURAS 1. One line "MISSENT TO BELIZE", 79½ x 4½ mm. No dates stated. (by Ralph Group)

2. One line "MISSENT TO BELIZE", 54 x 5½ mm. Sent out from the G.P.O., London, 12 July 1909. (by Ralph Group)
 3. One line "MISSENT TO BRITISH HONDURAS" in 5 mm Sans Serif upper case letters, length not stated. Not illustrated. Known 1969 in purple. (by J. Chin Aleong)
- GRENADA
3. One line in box about 54 x 7½ mm. Text in upper and lower case letters. Known December 1941. (by Harvey O'Connor)
- JAMAICA
8. One line "MISSENT TO JAMAICA, B.W.I." in 67 x 11 mm box. Known December 1957. (by Gale Raymond)
- Jamaica Type 5 reported used in December 1968 by W.G. Cornell.
- MONTserrat
1. One line "MISSENT TO MONTserrat" about 56 x 3 mm in upper case Sans Serif letters. Seen by Stan Durnin at G.P.O. in Plymouth, Montserrat, December 1968. See illustration in *To Montserrat in Quest of Ink* on later page of this issue.

ADDITIONAL PRINCESS ALICE APPEAL MARKINGS ARE REPORTED----

In the June 1969 Journal, pages 116-118, J. Chin Aleong listed all of the hand-stamps and machine slogans used to promote the Princess Alice Appeal that were known to him or to your Editor. Several members have kindly provided additional data as follows:

Dr. Arthur S. Griswold reports the boxed GIVE TO THE/PRINCESS ALICE/APPEAL hand-stamp on three Montserrat stamps, off cover. While no precise date can be given, use would probably have been about March 1955.

Anthony Shepherd reports the straight line mark illustrated here. He has this on a Grenada cover postmarked at the G.P.O. on 19 April 1955. Tony also reports the boxed three line handstamp on a Grenada cover from Sauteurs, dated 6 June 1955, and backstamped at the G.P.O. on 7 June 1955. The single line mark is in black ink, while the boxed mark is in violet.

Your Editor has found a reference to Princess Alice Appeal marks in the March 1956 issue of the *British West Indian Philatelist*. It reports the three line boxed handstamp for both Antigua and St. Kitts, and the single line handstamp for Grenada. Dates of use are not given.

With the above reports, we now have on record the use of one or more Princess Alice Appeal markings in all of the likely countries except British Honduras... Can anyone report a B.H. usage?

Your Editor regrets the late dispatch of the December 1969 Journal, but the month spent at FLOREX and a subsequent trip to the B.W.I. delayed printing of that issue until late December. As a result, it was not mailed to members until 3 January. We hope that the members will appreciate our need for a holiday now and then and will bear with us if we maintain a somewhat flexible publication schedule. If all goes well, this issue should be on its way early in February.

To Montserrat in Quest of Ink

by Stan Durnin

During our flight from St. Kitts to Montserrat, our plane maintained a good 7500 feet, affording us a beautiful view of that area of the Caribbean. We passed right over the island of Redonda, a dependency of Antigua, and saw a small, very small settlement on the southern section of the island. It was not right on the beach as would be expected, but rather a bit inland.

The aircraft hugged the eastern shore of Montserrat as we made our descent, making the mountainous nature of the island all too clear to us. The island rises in sheer walls of rock straight out of the sea. Montserrat's historical ties with the Irish are immediately evidenced when one's passport is stamped for entry, the stamp being in the shape of a shamrock. Elaine's quick eye spotted one of my suitcases disappearing into the car of the traveling judge, whose itinerary must have paralleled ours for we met him on several islands, and I quickly rescued it. All of my philatelic paraphernalia was in that piece of luggage!



POSTMASTER FERGUS CONVERSES WITH ERIC AND STAN AT ST. PATRICK'S POST OFFICE

The drive diagonally across the waist of the island provides many a thrill, for most Montserrat roadways are one continuous series of curves. Thus it is fortunate that there is not much vehicular traffic on the island.

The following morning I obtained my driving permit at a cost of \$2.00 E.C., rented the hotel owner's Hillman, and off we went "post officeing".

ST. PATRICK'S is two miles south of Plymouth. Although the road was more or less straight, the drive proved to us the general condition of the roads--very narrow, potholed, and no guard rails, with sheer drops of 30 feet or more being commonplace. We had no trouble in locating the Post Office at St. Patrick's and its Postmaster, Mr. Joseph Fergus. The St. Patrick's P.O.

was opened on 4 August 1956, and Mr. Fergus has been its only Postmaster.

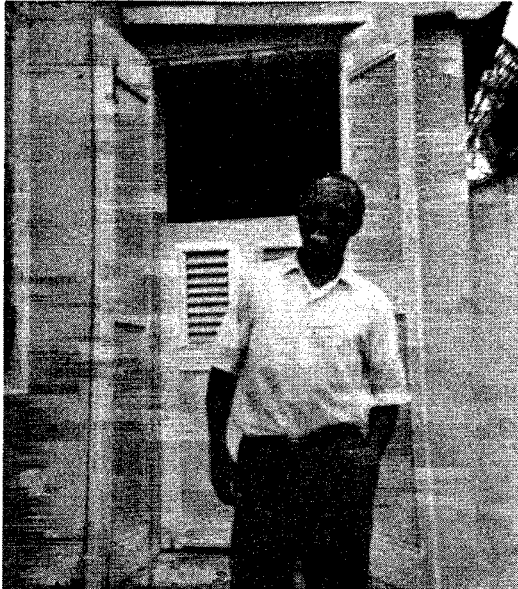
Mr. Fergus wasn't feeling too well that day, so I "hired on" as his temporary assistant to help conduct the required postmarking, registering, etc. The original CDS handstamp, shown here, is still in use, and it is the only mark this P.O. has ever used. Registration is indicated by the familiar rectangular label with R and number, but inscribed with only MONTSERRAT, not the individual Post Office name. (This was also true of the other P.O.'s on the island.) Mail delivery and pickup is conducted by the city (Plymouth) postman, Mr. Morrison. Since there is no call for postage stamps of high denomination, Mr. Fergus does not stock any above the 25¢ value.



Retracing our route to Plymouth, we dropped off a visibly shaken Eric. My left-hand side of the road driving, learned in the melee of Karachi, Pakistan,

was a bit too much for him! Elaine and I then continued northward for a visit with my corresponding friend, Christopher Fenton, Postmaster of the village of SALEM. The Salem Post Office is not on the main road through the village, and more than one inquiry had to be made before we finally located it.

Mr. and Mrs. Fenton were overjoyed at our visit, and he most fittingly sang to us "The Welcome Song of Montserrat" which he himself had composed, both words and music. Mr. Fenton has been Salem's Postmaster for over ten years; that is since 1958. Prior to that time Mrs. Eleanor Tonge was Postmistress. Again the highest denomination stamp stocked was the 25¢, and it was in short supply. We found this to be the case at all of the Post Offices we visited. The standard Registration label was available. By the way, the Registration Fee from Montserrat to any place in the world is but 6¢ E.C.! Mails are sent out and received at Salem three times a week.



SALEM P.O. AND POSTMASTER FENTON



As we had an appointment to visit with the Postmaster General, we had to cut short our visit to Salem. Our report of this visit and information obtained at the G.P.O. in Plymouth is given later in this article.

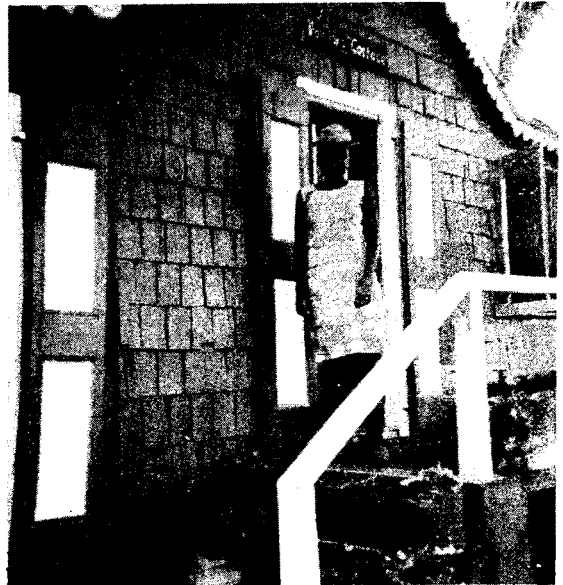
After a hurried lunch, Elaine and I again took to the north and located the village of ST. PETERS. We literally climbed 'down' into the village. As might have been expected, we passed the Post Office building on the way down and had to go all the way to the bottom of the hill to turn around. Attesting to the steepness of that hill, our Hillman even valked in the lowest gear! Inching our way upwards, we spent some anxious moments. William Allen, Postmaster of St. Peters since January 1958, interrupted his work in the garden to avail us of his postal facilities.

Continuing northward with the road becoming rougher and more sinuous, we next stopped at CUDJOE HEAD Post Office. Finding it closed and receiving no answer to our knock, we resumed our journey to the north. Here the road overlooks beautiful Carr's Bay (SG #101), and we could easily visualize a fleet of three-masters riding at anchor in this beautiful secluded area in the early years of the Colony. Driving onward we arrived at Montserrat's northernmost Post Office at ST. JOHNS. Postmaster Peter Daly was not in, but his gracious daughter, Vivian (see photo next page) saw to our postal quest. Mr. Daly has been Postmaster at St. Johns for about ten years.

Returning to our car, we learned that we had parked it in front of the home of the wife of the first Postmaster of St. Johns. Mr. J.R. Daniel was a former school teacher who came to St. Johns in 1924, and his wife said that she thought her husband was appointed Postmaster sometime in 1927. This seems a bit early, for the *Leeward Islands Statutory Rules & Orders, 1928, No.14* of April 26, 1928, lists only the G.P.O., Cudjoe Head, Harris and St. Peters as operating as of that date. (Does any member know the exact opening date of this P.O.?) It must be noted that Mrs. Daniel is getting up in years, and her memory is a bit foggy as to exact dates. Still, it was very interesting to talk with her, for she related quite a bit of the local history.



ST. PETERS POSTMASTER WILLIAM ALLEN



POSTMASTER'S DAUGHTER AT ST. JOHNS

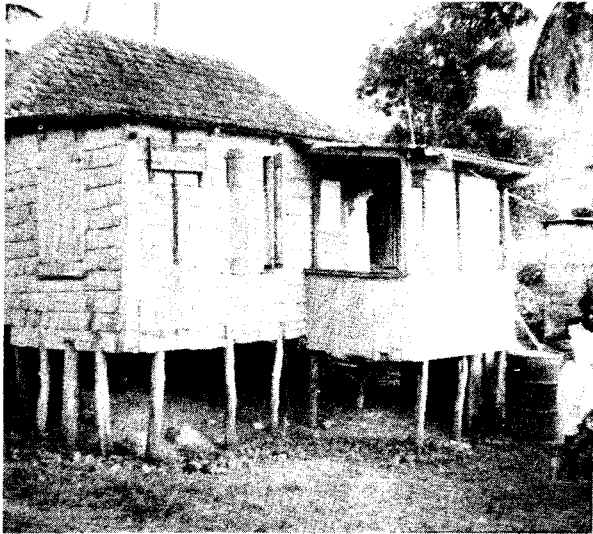


THE POST OFFICE AT CUDJOE HEAD

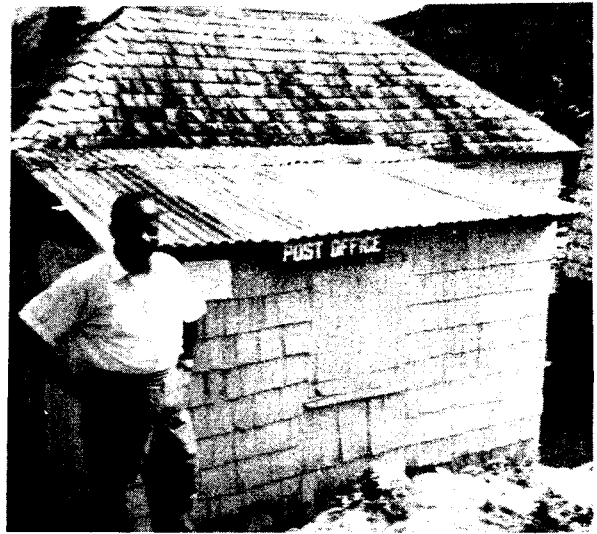
Since there is no road across Montserrat's northern section, we had to drive the ten, or so miles back to Plymouth to take the one road that does cross the island. This gave us another opportunity to stop at the CUDJOE HEAD Post Office, but it was still closed. We left a small quantity of pre-prepared covers with a young girl in the vicinity with instructions to post them at the first opportunity. She faithfully complied with our request, but the covers which reached us were postmarked only on the stamps and not clearly enough to be used for an illustration of the postmark. However, it appears to be similar to the 1940 strike shown on the previous page, as nearly as can be determined, although it is possible that the CDS has been renewed since that time.

To record the distances involved, we checked our speedometer and noted the following distances from Plymouth: Salem - 3.8 miles, St. Peters - 6.9 miles, Cudjoe Head - 8.4 miles and St. John - estimated 10 miles, the car's speedometer having given up the ghost between Cudjoe Head and St. Johns.

At 3.1 miles northeast of Plymouth we located the DYERS Post Office. Properly, it and all other P.O.'s on Montserrat, except the G.P.O., are called Sub-P.O.'s, but the distinction is largely an administrative one, and to simplify things we have dropped the "Sub" prefix in this report. After a few hair-raising bouts with hairpin curves having sheer drops that looked like "they went down forever", we turned onto the only path with any semblance of usage, and ended up on the grass before the Post Office. Miss Nellie Greenaway, who has been Postmistress since the Post Office opened, was shopping in the city, but her most obliging niece, Jennifer, age 15, helped us. As at all the other village P.O.'s, only one handstamp, the single ring CDS, was used, and the stamp supply was limited to the low values. After posting our covers, we continued our journey.



THE DYERS POST OFFICE BUILDING



POSTMASTER WHITE AND HARRIS P.O.

HARRIS Post Office is right on the main road, and a sign on the building made it very easy for us to spot. The Postmaster, Daniel R. White, has held that office since 1 April 1956, having replaced William Morgan. This was the only P.O. on the island, other than the G.P.O., that had any stamps above the 25¢ value, Mr. White having one copy of the Olympic 50¢ issue! I would guess that all higher denomination stamps postmarked at villages were taken there by the users, and that most are philatelic in nature. Harris, by the way, is 5.1 miles from 'the city.'

Driving 1.6 miles further, we came to the last of our village Post Offices, that at BETHEL. Being directed to the home of Miss Ann Markham, we learned that she had passed away in 1967, after serving as Postmistress from the initial opening of the office in 1957. Her niece redirected us to the home of the present Postmistress, Mrs. Sarah Daley, who took over the office on 1 September 1967. She and her Post Office can be seen in the photograph on the following page.

Elaine and I had a most enjoyable chat with Mrs. Daley and her daughters Verene and Ida, while I processed our covers. Verene presented me with a small batch of used B.W.I. stamps which, for no apparent reason, she had accumulated. We were informed that there was a settlement of Canadians living between Bethel village and Blackburne Airport, on an off-shoot road. Since there was no post office there, Elaine and I elected not to visit the area. Also, it was getting late in the afternoon, it was hot and humid, and we were quite thirsty and tired. So it was back the 6.7 miles to Plymouth and our hotel for a cooling gin and tonic. (God bless the British for that!)

Earlier in our tale, we promised to tell of our visit to the G.P.O. in Plymouth. Eric and Lulu had met Postmaster General Joseph Hughes on a previous visit, so they reminisced and renewed their old friendship. Mr. Hughes, very obligingly took time out from a very busy schedule to conduct us on a personal visit to all sections of his Post Office which was then undergoing some internal remodeling.

We learned from Mr. Hughes that each of the eight Sub-Post Offices is manned by one person, while the G.P.O. has a staff of ten. The village Postmasters work for a fixed part-time salary and receive no commission on stamp sales, although I had previously thought that they did. There are two postmen who serve the outlying areas, and two city mailmen who take care of the city and its environs. There are no post boxes on the island, and there is but one post van which is ample for the postal needs of Montserrat.



POSTMISTRESS DALY OF BETHEL



POST VAN IN FRONT OF G.P.O.

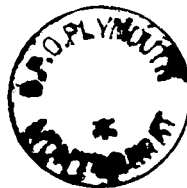
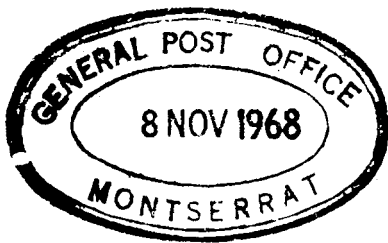
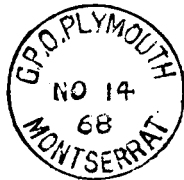
Airmail is dispatched via LIAT, six times a week, while surface mails go out fortnightly via the "Federal Boats". Occasionally surface mails are dispatched via sloop to Antigua, but there is no set schedule. The frequency is probably determined by the amount of mail on hand and the availability of a sloop going in that direction.

Mr. Hughes informed us that on the very day of our visit, 14 November 1968, he had ordered new postmarks for the Post Offices of the island. Rubber registration handstamps were included in that order. It would be well to keep an eye open for initial usage of the new items. (*Reports will be appreciated. EDITOR.*)

As we visited each section of the G.P.O., I was ever alert as to what handstamps were being used in that particular section. An impression of each was obtained, and these are illustrated on the following page. The public sales window (seen in photo just to left of mail drop slots) was utilizing the steel die single-ring CDS with wide spacing at the sides. This is shown at the upper left of the group illustrated. This mark actually has an asterisk, but the only evidence of it on our strike was a faint shadow. A quite similar CDS, upper right, was in use at the interior cancelling area in the rear of the Post Office. It is easily distinguished by the narrower spaces at the sides, and the wider spacing between the letters, especially in G.P.O.

We saw quite a large pile of parcels awaiting the arrival of the *Federal Palm* or *Federal Maple*. (The *Federal Maple* arrived the day we left the island.)

The same Registration label, inscribed only Montserrat, that had been found at the village P.O.'s was in use at the G.P.O. I would venture to say that some of the handstamps we found have not felt ink on their faces for some time. It was obvious that the G.P.O. PAID CDS with inverted date of FE 23 67 had been gathering dust for the better part of two years.



POSTMASTER

FIRST DAY COVER

MISSENT TO MONTSEERRAT

PAQUEBOT

INSUFFICIENT POSTAGE

RETURN FOR POSTAGE STAMPS

The Genius of Philately must have been with us that day to disclose in the back of a seldom used desk drawer the old-timer CDS of the late 30's to early 50's. It is shown in its present state, sans date and with asterisk in the bottom at the position the year slug would normally be placed. Understandably, this mark, which has seen better days, is no longer in use.

The machine canceller was still quite in evidence, but had been broken "for a while now" and not used. (Who knows when the machine 'broke'?) (*A strike of the machine mark dated OCT 8 1969 indicates it has been repaired. EDITOR.*) At the time of our visit the 24¢, 42¢, 48¢ and 60¢ adhesives were not available.

Mr. Hughes was formerly Postmaster of Basseterre, St. Kitts. He was serving as P.M.G. of Montserrat under a two year contract starting 15 January 1968. The G.P.O., pictured on the previous page, is in the ground floor of the Treasury Building. In the same illustration, the sole van in the postal system can be seen, parked in front of the P.O.

Our visit to Montserrat was a worthwhile experience. Not only did we study, first-hand the functions and locations of the postal system, but our lives were enriched by the acquaintances we made. Sadly we departed the Emerald Isle of the Caribbean, its friendly people, and its still rather unspoiled way of life for the heavily touristed island of Antigua.

OUR SECRETARY REPORTS

New Members:

BETHELL, J. FREDERICK	ter BRAAKE, ALEX L.	GARCIA, GUY
GARRATT, PHILLIP	GRINDE, "MAC" H.	MEYER, MRS. JUDITH
NORRIS, LT.COL. FRANK S.J.	OLSON, RADM LOUIS B.	ROGERS, HERBERT
SPEAR, ARTHUR H.	STOLEE, MICHAEL J.	

New Applicants:

- *BARTLETT, GRAHAM C., 39 St. Mary's Road, Bingham, Nottingham, England NG13 8DX. Bank Official. St. Lucia (all aspects), Canada, Br. Col. comm's, Cats of World.
 - BROWNE, EDWARD L., P.O. Box 2693, Pompano Beach, FL 33062. Travel Agent. British Colonials. Sponsored by Byron R. Cameron.
 - *BUGGELN, ROBERT W., 325 Camp Hill Road, Fort Washington, PA 19034. Marketing Director. BWI, Bermuda, U.K. * Commonwealth, U.S., U.N., Germany.
 - *CHELF, PHILIP C., 4373 So. Pearl Street, Englewood, CO 80110. Truck Driver. Antigua, Barbados, Pitcairn Island, Cayman Islands.
 - EDWARDS, DAVID G., 73 Deer Park, Harlow, Essex, England. Company Director and Pharmacist. Jamaica. Sponsored by P.W.C. Burke.
 - HAHN, ALFRED W. JR., 14 Quay Court, Centerport, NY 11721. Banker. Pre-1953 Bermuda & Jamaica, mint and used, on and off cover. Sponsored by Fred F. Seifert.
 - HARPER, MERRITT C., 1700 Emerald Drive, Clearwater, FL 33516. Retired Pharmacist. BWI and Canada. Sponsored by Byron R. Cameron.
 - JAMES, HUGH A.H., 25 Rugby Road, Kingsbury, London N.W.9, England. Civil Servant (Systems Analyst), Jamaica Postal History & Gen. Spec. Sponsored by E.M. Adelson.
 - JONES, PHILLIP C., 9810 Danube Ave, Sepulveda, CA 91343. Marketing. British America, British Caribbean and U.K. Sponsored by Fred F. Seifert.
 - KEDRIERSKI, JERRY B., 1920 Coral Gate Drive, Miami, FL 33145. Police Captain. 19th Century Foreign. Sponsored by E.M. Adelson.
 - *KIMBER, GEORGE H., Box 416, Greene, NY 13778. Pharmacist. BWI with specialized Cayman Islands.
 - MEADLEY, RICHARD G.S., The Royds, Scalby, Scarborough, Yorkshire, England. Physician and Surgeon. St. Lucia, St. Vincent, Grenada. Sponsored by Thomas Foster.
 - PINTHER, HAROLD O., 2711 N.E. 22 Court, Pompano Beach, FL 33062. Retired. Parts of Br. Commonwealth. Spec. Cyprus #'s 1 & 2. Sponsored by Byron R. Cameron.
 - *STORER, HUGO D., G.P.O. Box 4104, San Juan, PR 00928. Univ. of P.R. Executive. Puerto Rico, Anguilla, St. Lucia, St. Kitts, Virgin Islands, G.B. used in Carib.
 - SUTCLIFFE, ARTHUR P.D., 1 Oastler Avenue, Huddersfield, Yorkshire, England. Solicitor. Barbados, Jamaica, St. Lucia. Spec. Jam. Pmks. Sponsored by Anthony Shepherd.
 - *TRUMBULL, ARTHUR J., 1441 S.E. 3rd Court, Apt.28, Deerfield Beach, FL 33441. Retired. U.S., U.N., Canada, BWI, New Zealand, Australia. Spec. U.S. & BWI.
 - WILSON, LT.CDR. MICHAEL R., H.M.S. Tamar, B.F.P.O. 1, Hong Kong. Officer Royal Navy. QE II, but changing to earlier reigns. Guyana definitives. Sponsored by A.S. Branston.
 - WILSON, SAMUEL L., 1530 West River Drive, Margate, FL 33063. Retired. U.S., U.N. Spec. Europa, Rhodesia. Sponsored by Byron R. Cameron.
- *=Sponsored by A.N. Johnson*

Resignations:

RICHARD G. BELL and ARTHUR M. NEU have resigned in good standing.
DON O. GORE, KENNETH M. JELLINS, JOHN M. KING, MARY McQUEEN and HERBERT TOPOL have been dropped for non-payment of 1969 dues.

New Address:

MASON, DONALD G., 237 S. 48th Street, Apt.303-B, Philadelphia, PA 19139.

NEW ISSUES

ANTIGUA

20 JAN 70 COIL STAMPS. 5¢, 10¢ & 25¢ in a common design showing Arms of Antigua. Photogravure printed by Harrison & Sons Ltd. on Block CA watermarked paper from designs by their staff artists and issued in reels of 480 stamps. Size of stamp is 0.95" x 0.8".

BAHAMAS

23 FEB 70 GIRL GUIDE ISSUE. 3¢, 12¢ and 15¢.
MAY 70 NEW U.P.U. BUILDING ISSUE. 3¢ and 15¢.
AUG 70 RED CROSS ANNIVERSARY. 3¢ and 15¢.
SEP 70 INTERNATIONAL ART FESTIVAL. 3¢, 5¢, 11¢, 22¢ and a Souvenir Sheet.
OCT 70 CHRISTMAS ISSUE. 3¢, 11¢, 12¢, 15¢ and a Souvenir Sheet.

BARBADOS

16 DEC 69 The BOY SCOUT issue described in the previous Journal also included a Souvenir Sheet.
MAR 70 TOURISM ISSUE.
70 NEW DEFINITIVES.

BERMUDA

6 FEB 70 DECIMAL CURRENCY OVERPRINT. Each of the current definitives has been overprinted with its equivalent decimal value, and the Sterling value overprinted with a single horizontal bar. Exceptions are the 8d-5¢ and 2/3-36¢ as there is no equivalent Sterling value in the new decimal currency.
JUN 70 NEW DECIMAL DEFINITIVES. A set of 17 values from 1¢ to \$2.40 with designs featuring different flowers found in the Colony, shown in natural colors.

BRITISH HONDURAS

2 FEB 70 POPULATION CENSUS 1970. The 5¢, 10¢, 15¢ & 25¢ definitives have been overprinted POPULATION CENSUS/1970 in black.
2 JUL 70 HARDWOODS. 5¢, 15¢, 22¢ and 25¢.

BRITISH VIRGIN ISLANDS

16 FEB 70 NEW DEFINITIVE ISSUE. A set of 17 values from ½¢ to \$5, U.S. Cy. Designs feature various boats and ships ranging from a Carib canoe to the modern Sun Arrow, Hydrofoil. Designed and lithographed by John Waddington of Kirkstall Ltd, in panes of 25 on Block CA paper.



CAYMAN ISLANDS

14 NOV 69 CHRISTMAS 1969 ISSUE. After two postponements, this issue was at last released on 14 November 1969. See Oct. Journal for details.
6 JAN 70 TOURIST ISSUE. We have seen no report of actual release, and it may have been delayed.
17 MAR 70 EASTER ISSUE. ½¢, 10¢, 12¢ and 40¢.

DOMINICA

- 70 FLORA AND FAUNA ISSUE.
- 70 TOURISM ISSUE.
- 70 RED CROSS ANNIVERSARY ISSUE.
- 70 NATIONAL DAY ISSUE.
- 70 CHRISTMAS 1970 ISSUE.

GRENADA

JAN 70 PIRATE ISSUE. Four stamps as illustrated below. 15¢ (black) Blackbeard (Edward Teach); 25¢ (green) Anne Bonney; 50¢ (violet) Jean Lafitte; \$1 (carmine) Mary Read. Printed by Bradbury Wilkinson from steel engravings of the late U.N. artist Kurt Piowitz.



- 70 U.P.U. ISSUE.
- 70 CHILDREN ISSUE.
- 70 EASTER 1970.
- 70 25TH ANNIVERSARY OF THE END OF WORLD WAR II.
- 70 RED CROSS ANNIVERSARY ISSUE.
- 70 CHRISTMAS 1970.

GUYANA

FEB 70 REPUBLIC DAY 1970. 6¢, 25¢, 30¢ and 40¢. Designs by L.D. Curtis.
70 PUBLIC BUILDINGS.

JAMAICA

- 70 NEW DEFINITIVE ISSUE. To replace the Decimal Overprint Issue.
- 70 TENTH ANNIVERSARY OF JUNIOR CHAMBER OF COMMERCE.
- 70 NATIONAL HEROES.
- 70 TOURISM ISSUE.

MONTSERRAT

10 DEC 69 CHRISTMAS 1969. Three stamps designed by J.E. Cooter and lithographed by De La Rue in sheets of 50 on Block CA watermarked paper. 15¢ & 25¢ depict the stained glass window of King Casper before the Virgin and Child; the 50¢ design incorporates a reproduction of a Limoges Enamel of the Nativity by Leonard Limosin.
FEB 70 EASTER 1970 ISSUE.
70 CENTENARY OF RED CROSS. 3¢, 4¢, 15¢ and 20¢.
70 IRISH SETTLERS ISSUE.
70 NEW DEFINITIVE ISSUE.

ST. KITTS

1 FEB 70 NEW DEFINITIVE ISSUE. 16 values from ½¢ to \$5, featuring various Pirate subjects. Designed and lithographed by John Waddington Ltd. in sheets of 50 stamps on Block CA watermarked paper.
1 APR 70 STAMP CENTENARY ISSUE.
14 SEP 70 CENTENARY OF THE DEATH OF CHARLES DICKENS. 1¢, 3¢, 25¢ and 40¢.

ST. LUCIA

- 1 FEB 70 NEW DEFINITIVE ISSUE. 14 values from 1¢ to \$5. The values through the 50¢ feature St. Lucia scenes; the \$1 shows the St. Lucia flag; the \$2.50—the St. Lucia Arms; and the \$5 continues the portrait of Her Majesty from the painting by Major A.C. Davidson-Houston as used on the previous definitive issue. Designs are by M. and S. Goaman, and the stamps are lithographed by Format International in sheets of 25 stamps on unwatermarked paper.
- 70 EASTER 1970 ISSUE. 25¢, 35¢ and \$1.
- 8 JUN 70 CENTENARY OF THE DEATH OF CHARLES DICKENS. 1¢, 25¢, 35¢ and 50¢.

ST. VINCENT

- 12 JAN 70 NEW DEFINITIVE ISSUE. 16 values from ½¢ to \$5. All feature birds of St. Vincent. Designed by John Waddington Studio Artists and photogravure printed by Harrison & Sons Ltd. in sheets of 50 on Block CA watermarked paper.
- 10 MAR 70 20TH ANNIVERSARY OF REGULAR AIR SERVICES TO ST. VINCENT.
- 1 JUN 70 CENTENARY OF BRITISH RED CROSS.
- 70 CHRISTMAS 1970 ISSUE.

TRINIDAD & TOBAGO

- 3 NOV 69 J.C.I. WORLD CONGRESS ISSUE. Corrected date of issue.
- 2 FEB 70 CARNIVAL ISSUE. 5¢—Man in the Moon; 6¢—City beneath the Sea; 15¢—Antelope God Bamibara; 30¢—Chanticleer, Pheasant Queen of Malaya; 40¢—Steel Band of the Year. Designed by V. Whiteley and lithographed by J. Enschede & Zonen in sheets of 50 stamps.
- 15 FEB 70 MAHATMA GHANDI ISSUE. 10¢ and 30¢.
- 5 MAY 70 UNITED NATIONS ISSUE. 4 values not specified.
- 1 SEP 70 HUMAN RIGHTS ISSUE - Religious stamps (churches).
- 16 OCT 70 125TH ANNIVERSARY OF SAN FERNANDO. 3 values not specified.

TURKS & CAICOS

- 2 FEB 70 NEW CONSTITUTION ISSUE.
- 17 MAR 70 EASTER 1970 ISSUE.
- OCT 70 CENTENARY OF THE DEATH OF CHARLES DICKENS. 1¢, 3¢, 15¢ and 30¢.

The information in the above listing has been provided by the Crown Agents and the Inter-Governmental Philatelic Corp. Our special thanks go to Geoff Oakden, Stamp Sales Representative for the Crown Agents in North America, for keeping us well informed.

BITS AND PIECES--- by J. Chin Aleong

ANTIGUA: The 25¢ adhesive, revalued 20¢ and 15¢ aerogramme surcharged 5¢ were issued on 2 JAN 1970.

BARBADOS: A new Post Office has opened at EAGLE HALL.

TRINIDAD: New Postal Agencies have opened at SIXTH COMPANY VILLAGE, MORUGA, 7 OC 69; BAGATELLE ROAD, DIEGO MARTIN, 14 NO 69; LAVENTILLE EXTENSION ROAD, MORVANT 17 NO 69; PELICAN, MORVANT 24 NO 69; MACAULAY 1 DE 69; SISTER'S ROAD 16 DE 69. A P.A. at VALSAYN is to be opened.

New Postage Due stamps inscribed "Trinidad & Tobago" in different designs have been printed: 2¢-green; 4¢-bright purple; 8¢-violet; 12¢-orange; 50¢-blue and 60¢-sage green. Not all values released at same time, and some may not have been yet. Earliest date seen: 2¢-25 NO 69.

1969 TREASURER'S REPORT

What a wonderful year this was for the British Caribbean Philatelic Study Group! In addition to 80 new members our treasury shows an excess of income over expenditures of \$813.39, the first excess since I became Treasurer. The programs that were initiated by the President and the Board of Trustees, combined with overwhelming support from the members, have produced this accomplishment.

Key factors in our financial success are (1) the increase in membership, (2) the support from our advertisers and (3) donations in the form of cash or of lots for our recent donation auction. All of you who contributed in any way deserve the sincere thanks of all members.

Our Membership and Publicity Chairmen have brought us to the attention of a much larger number of collectors. Once they have seen a copy of our Journal, the appeal to join is great enough that most become members.

In addition to support from our advertisers, two members are sharing the duties of Advertising Chairman. These two have even accomplished bringing the advertising accounts up to date, fully paid before the end of the year.

To say that our membership responded generously to the donation auction is almost an understatement of the results. Fifteen members contributed from one to seven lots for a total of 35 lots. We would list their names were it not that we might thus imply that the contributions of those who donated at other times were of less importance.

Six Life Members have paid a total of \$460 in life membership fees. To this we have added \$40 from general funds and purchased a New Jersey Bank & Trust Company 5% Growth Bond yielding 6.1% when held to maturity for 8 years. This will produce income at maturity of \$5.12 per year, per life member, with the \$500 available for reinvestment.

We are obtaining new membership cards. Our present supply is nearly exhausted and we have entered a new decade - two good reasons to purchase new cards. Pending receipt of the new cards, we will continue to use the old ones to avoid any delay in acknowledging receipt of your dues.

Our expanded membership has produced an inevitable and unfortunate consequence. Until this year I have written a short note with each membership card that I mailed. This is no longer possible. I will continue to keep up all correspondence and answer any questions whether at dues time or at any other time throughout the year. Should you have been disappointed that a note did not accompany your card, please accept my apologies, but there are just not enough hours in the day. 1969 has also been a wonderful year for your Treasurer, in great measure due to your strong support and to the wonderful friendships formed whenever we meet.

As we enter a new year, I ask your continued cooperation in prompt payment of your annual membership dues. Help us conserve our funds by not making necessary any correspondence to remind you to pay up. If - and perish the thought - you find it necessary to relinquish your membership, please show us the courtesy of letting us know.

The 1969 Treasury Balance Sheet is shown overleaf.

Respectfully submitted,

MARK W. SWETLAND, Treas.

Balance on hand as of December 31, 1968 \$960.99

1969 RECEIPTS

Current dues	1,008.75
Advance dues	91.80
Admission fees	77.76
Donations	83.29
Publications	46.10
Donation auction	476.75
Other auction lots	2,059.00
Auction postage	7.97
Advertising	292.00
Life membership fees	360.00
Miscellaneous income	<u>29.23</u>
TOTAL RECEIPTS	\$4,532.65

1969 DISBURSEMENTS

Currency conversion charges	8.07
Postage - Editor	303.15
Secretary	39.73
Miscellaneous	16.21
Printing & Supplies - Editor	1,196.73
Stationery - Secretary & Misc.	76.00
Advertising costs	23.76
Payments to auction vendors	1,910.75
Auction costs	13.67
Transfer to Life Membership Fund	<u>500.00</u>
TOTAL DISBURSEMENTS	\$4,088.07

NET RECEIPTS OVER DISBURSEMENTS \$444.58

Balance on hand as of December 31, 1969 \$1,405.57

Life Membership Fund

New Jersey Bank & Trust Company 5% Growth Bond No. 11083, date of issue June 24, 1969	\$500.00
Redemption value as of December 24, 1969	\$512.66

Note: This amount has not been taken into income.

DEFINITIVES SERVE AS POSTAGE DUE STAMPS IN TRINIDAD----

We have been informed by J. Chin Aleong that the obsolete 2¢ definitive, SG 285, was used as a postage due stamp in Port of Spain for about the first three weeks of November, 1969, and in San Fernando during November and December. Since he reports the new design 2¢ postage due stamp used in Port of Spain by 25 NOV 69, it would appear that the old 2¢ due had run out before the new issue arrived.

PERSONAL MENTION-----

JOHN M. BAILEY was not spared a bout with the influenza which ran wild in the U.K. this winter. He says it has been a long time in leaving him. John hopes to make it to PHILYMPIA next September 21st to meet those of us who attend the joint meeting of BCPSPG and BWISC.



THOMAS FOSTER, HIS BOOK AND WEBB TROPHY

We mentioned in the last Journal that the Francis Webb Memorial Trophy had been presented to THOMAS FOSTER for the excellence of his book on Jamaica, at the British Philatelic Exhibition. Now, thanks to the *Hull Daily Mail*, we are able to show you a photograph of Tom, his book and his trophy.

S. GRAHAM HOEY is another member who expects to make it to London to join us at PHILYMPIA. Graham says he hopes to spend at least a week in London at that time, and asks that any member who comes via Scotland be sure to have his address and phone number for a really good get-together in Glasgow.

Speaking of phone numbers reminds us of a recent long distance call from BILL TATHAM in California. While we didn't keep track of the time, it seemed as though the conversation lasted just short of forever, and we are glad that we do not have to pay the charges! Bill says that he won a number of lots in the Robson Lowe Glassco Sale, and his stamp budget is shot for some time to come. Knowing the prices realised at that sale, we can understand very well his problem.

WERNER FRAMKE hopes that a swollen left eye which has kept him home from work is not the symptom of an allergy to Stamp Collecting, Scuba Diving or Travel. These are especially important at the moment, for Werner is making advance arrangements for a trip next November to St. Lucia, St. Vincent and Grenada.

The cold winter weather in Cincinnati also makes BILL CORNELL dream of tropical islands and to hope that some day he will be able to visit his favorite Antigua.

BOB TOPAZ was getting ready for a business trip to Italy when we last heard from him. He promises to complete his Jamaica postmark listings soon. Since he is near the end of the alphabet, one or two more installments should wrap it up.

Back at home, ERIC HEYER is heeding his doctor's advice and taking things easy. After being discharged from the hospital in Honolulu, he managed to check out the local stamp dealers there, but reports finding little material of interest to him.

JOHN E. THOMPSON compliments us highly by asking "Why aren't our dues \$10?" and then adds a generous donation to his 1970 dues payment.

M E M B E R S' M A R T

50¢ per line, minimum two lines. A line can accommodate a maximum of 81 letters, figures and spaces. Cash or check must accompany all advertisements. Send copy and payment to COL. FRED F. SEIFERT, 3106 FLORIDA ST. N.E., ALBUQUERQUE, NM 87110

WILL SELL OR TRADE AT 1/3 SCOTT'S--- Have large accumulation of British America, Great Britain and Ireland fine or better, used and unused. Send want list or will exchange trading lists. TOM LIBBY, 2143 Main Street, Napa, Calif. 94558

GALE RAYMOND writes that he, RICK RODGERS, AL JOHNSON and CHARLES SAWYER recently received their APOLLO 12 covers that actually went to the Moon and back. Being a member of the stamp club at the Space Center appears to have its fringe benefits!

Two of our members are now serving as Presidents of other philatelic organizations. The Canadian Stamp Dealers' Association is headed by RICHARD M. LAMB, while JAMES R.D. YEAW is Prexy of the Universal Philatelic Cover Society.

COLIN BAYLEY was one of several Canadian Philatelists shown in a photograph in the December 16, 1969 issue of *Western Stamp Collector*. In the photo, Colin and three others were being shown trial color proofs of the 6¢ current definitive stamp of Canada by Frank Flatters, Chief of Canada's Philatelic Agency.

We somehow have a feeling that TOM GIRALDI is pulling our leg when he asks if we plan to bid on the British Guiana "World's Rarest Stamp" which is soon to be up for auction. Frankly, if we had that sort of money we would get much more fun out of spreading it over a larger area.

BRIAN LIMRICK, who is a CPO in the Royal Navy, will be going to sea come May. He will be serving with 809 Squadron on HMS *Ark Royal*. Brian's wife will stay on in Elgin, Scotland, so Brian's mailing address will stay the same. We will be looking for mail from foreign ports, Brian, so don't forget to write.

CONVERSATION PIECES

Our Postal History Material of the World has postmarks, covers, proofs, specimens, used abroads, unlisted rarities, postal stationery, fakes, forgeries, multiples and Cinderellas. We specialize in British West Indies postmarks and numeral obliterations but many elusive items of the world are in stock. Drop us a line. It might take months till we get around to answering you, but the old bum, our staff of one, won't be rushed. We also buy and are much faster in that department.

- 1954 Bahamas coils - complete paste up strips of 5 values. \$30.00
- 1965 Bahamas unissued coils complete paste up strips of 5 values \$300.00
- 1964 Jamaica coils - complete paste up strips of 4 values. \$25.00



BAHAMAS STAMPS
B.W.I. Cancellation Specialists
BOX 333, ULETA, FLA. 33164

AND AS WE GO TO PRESS:

Fewer than the required 50% of our members returned their ballots on the questions of changes in our Constitution and whether to have the B.C.P.S.G. become a corporation. If you are one of those who failed to vote please disregard the deadline date that is given on the instructions and mail in your ballot to the Secretary at once. We must have a decision on these questions so that Milt Erickson can be instructed whether to take any further action.

A year ago, on page 18 of the February 69 Journal we wrote of Monkey Mountain Postal Agency in British Guiana and promised that we would try to find out its present status. We can now report that it was closed on 1 September 1964. The opening date of this P.A. was 1 June 1961, so it had been in operation for just 40 months.

The Royal Philatelic Society, London, has announced publication in late February of the long-awaited book by Townsend and Howe on the stamps and postmarks of British Guiana. The edition is limited to 500 copies, and being priced at £15 can hardly be considered a cheap book, but from the advance description it appears that high quality workmanship and materials justify the price. Since it covers a subject that is dear to our heart, and having played a part in supplying some of the information it contains, we have ordered our copy. It pleases us to report that we have arranged with the Royal to provide a copy for our Group Library, in exchange for a set of the early issues of our Journal which they require to complete the file for their Library.

We mentioned on page 230 of the December 1969 Journal that the Guyana Government had sold c.t.o. remainders of some of its stamps and asked if anyone could provide further details. We found the answer in The Trinidad Philatelic Society Bulletin of NOV-DEC 1969. An offering of these stamps to dealers is made through an advertisement in *The Philatelic Exporter* of London by E. Mosden of New York. Mosden will be remembered by the unsavory deals he foisted on a naive St. Lucia postal administration in connection with some of

BACK ISSUES

The following back issues of the BCPJ can still be supplied:

- WHOLE NUMBERS: 27, 37, 39 and 40.....
.....@ 50¢ each, POSTPAID.
- WHOLE NUMBERS: 44 TO DATE.....
.....@ 70¢ each, POSTPAID.

SEND ORDERS TO THE EDITOR.



**BRITISH CARIBBEAN
POSTAGE STAMPS**

Find the unusual and the elusive in the H. R. Harmer, Inc. auctions.

Request auction catalogue and leaflet "How to Buy at Auction".

H. R. HARMER, INC.

International Stamp Auctioneers

**6 West 48th Street, New York, N.Y. 10036
(212) 757-4460**

SPECIALIST ◆◆◆◆
◆◆◆◆ ◆◆◆◆ **MATERIAL**

WE HAVE AN EXTENSIVE STOCK OF CANCELLATIONS, COVERS, SPECIMENS, ESSAYS, PROOFS AND THE LIKE FROM THE BRITISH CARIBBEAN COUNTRIES, AS WELL AS THE REST OF THE WORLD.

We will gladly send a selection on approval to any member of the British Caribbean Philatelic Study Group. Just tell us what kind of material you would like to see.

WILLIAM BOGG

NEW ENGLAND STAMP COMPANY

45 BROMFIELD STREET,
BOSTON, MASS. 02108
TELEPHONE: 617 HA6-2712

the St. Lucia Statehood overprint stamps. The material offered by Mosden includes the 1954-62 British Guiana definitives to the 36¢ value, and the following Guyana commemorative issues: 1967 Rarest Stamp, First Anniversary, 1st Parrot issue, 2nd Parrot issue, Cricket (including souvenir sheet), Easter 1968, Efficiency, Al Quran, and Christmas 1968. We do not know if it is possible to identify these c.to order remainders by type and date of postmark, but hope that such is the case. Further reports will be welcome.

Thomas Foster advises that the postal code has come to Hull and gives his as HU10 7LG. We should point out that it is our understanding that proper use of the code calls for it to be placed at the very end of the address and that when it is used the shire or county name is omitted. Thus on mail from abroad the code comes after England. If anyone has seen official word to some other effect, let us hear from him. Tom also tells us that the name of his house "Wait-a-Bit" should be added to the top of his address, but we can't help feeling it is gilding the lily to add anything more to 6 Cock Pit Close, Kirk Ella, Hull, England, HU10 7LG which should be adequate to guide the postman to Tom's abode.

If you haven't already paid your 1970 dues, you will find a statement enclosed with this Journal. Of course, our information is as of early February, so don't blow a fuse if you have already paid when your bill arrives. If there are any questions as to your status, write to Mark Swetland to get things squared away.

Also with each Journal is a membership application form. We hope these will be put to good use. If you need more, your Editor has a good supply available. We aren't suggesting any press gang tactics to recruit new members, but a bit of arm twisting would not be out of order,

If you have missed an issue or as a new member don't think you have received all of the back numbers to which you are entitled, don't sulk, write derogatory letters to *The Times*, or stick pins into images of the Editor. Drop us a letter and we'll do our best to make things right.

A "MUST" FOR EVERYONE WITH A BRITISH EMPIRE STAMP COLLECTION

British Empire Review 1961-68

Compiled from 83 Robson Lowe British Empire auction catalogues between 1962 & 1968, its 92 pages are packed with information on 122 countries, and provide approximately 26,000 realisations in all.... 243 of the most interesting and valuable lots are illustrated.

This auction review is produced to show the prices and price trends over a number of years. The basic qualification for inclusion is a realised price of \$24 for a single stamp and pro rata for multiples.

\$4 INCLUDING POSTAGE: SPECIAL PRICE FOR SUBSCRIBERS TO ROBSON LOWE AUCTION CATALOGUES, \$1.25.

FOR FULL DETAILS OF OUR OTHER PUBLICATIONS PLEASE SEND FOR OUR NEW "PUBLICATIONS AND SERVICES" BROCHURE SAYING THAT YOU SAW THIS ADVERTISEMENT IN:
THE BRITISH CARIBBEAN PHILATELIC JOURNAL

ROBSON LOWE LTD.

PHILATELIC PUBLISHERS

50 PALL MALL,
LONDON, S.W.1., England.

Cables: Stamps, London, S.W.1. Telex: 915 410