

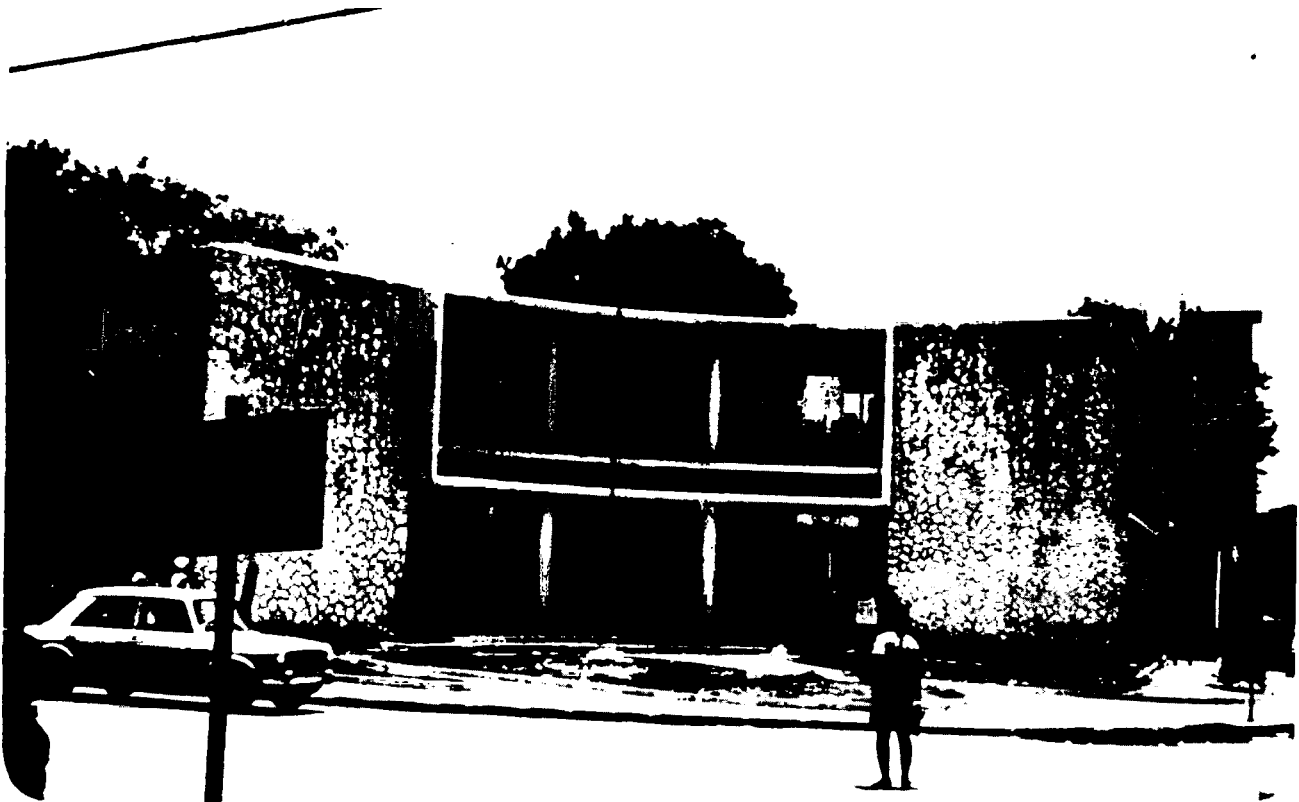
BRITISH CARIBBEAN PHILATELIC JOURNAL

FEBRUARY 1972
VOL. 12 NO. 1
WHOLE NO. 65

UNIT NO. 27
OF THE APS

published by THE BRITISH CARIBBEAN PHILATELIC STUDY GROUP

EDITOR: COL. FRED F. SEIFERT, 3106 FLORIDA STREET NE, ALBUQUERQUE, NM 87110, U.S.A.



FOR SIZE AND APPEARANCE, THE MONTEGO BAY NO. 2 POST OFFICE IS THE NUMBER ONE POSTAL FACILITY OF THAT JAMAICA CITY.

Photograph by Eric H. Heyer

IN THIS ISSUE:

THE BARBADOS COIL STAMPS.....3
BARBADOS MORE TO PAY & A NEW EKD.....7
THE PRESIDENT'S PAGE.....15
A CARD FROM ST. CHRISTOPHER.....22
A B.V.I. PROOF?.....23
NEW JAMAICA RED CROSS VARIETY.....24
DEBTS CAUSE CARIBAIR TO QUIT.....24
NEW ISSUES.....25
BARBUDA ISSUE DECLARED INVALID.....28
PERSONAL MENTION.....30

BAHAMAS LANDFALL VARIETIES.....4
JAMAICA POST TOWN POSTMARKS.....8
SOME NEW ANTIGUA DATA.....16
NO DUES, NO JOURNALS!.....23
GUYANA EXPEDITION COVERS OFFERED.....23
GUYANA INCREASES POSTAL RATES.....24
SOME CURRENT NASSAU POSTMARKS.....25
OUR SECRETARY REPORTS.....27
BITS & PIECES FROM HERE & THERE.....29
AND AS WE GO TO PRESS.....32

SUPPLEMENT: INDEX TO VOLUME 11, WHOLE NUMBERS 59 THROUGH 64, FEB THROUGH DEC 1971



THE BRITISH CARIBBEAN PHILATELIC JOURNAL

Published bi-monthly in the even numbered months. Available only to members of the B.C.P.S.G. with subscription included in membership fee of \$5.00 per annum in U.S. Funds. Membership application forms and additional information may be obtained from Membership Chairman or U.K. Representative.

EDITORIAL ELUCIDATIONS

PRESIDENT
Dr. John C. Arnell

VICE PRESIDENT
William G. Cornell

SECRETARY
Stanley C. Durnin
P.O. Box 532
Albany, OR 97321

TREASURER
Dr. R.A. Ramkissoon
25342 Perch Drive
Dana Point, CA 92629

ASST. TREASURER &
U.K. REPRESENTATIVE
Alfred J. Branston
11 Patching Hall Lane
Chelmsford, Essex
ENGLAND CM1 4DH

PUBLIC RELATIONS
Charles E. Cwiakala

MEMBERSHIP CHAIRMAN
Alfred N. Johnson
2610 Virginia St.
Baytown, TX 77520

ADVERTISING
Major Daniel C. Warren
1623 Brisbane Street
Silver Spring, MD 20902

LIBRARIAN
Robert P. Lovett
R.D. #1
Newtown, PA 18940

Most of you will have noted that since the Journal of October 1970 we have been 'justifying' the lines. It has made a great improvement in the appearance to end up with each line of type the same length, to provide an even right-hand margin.

We feel this has been a worthwhile change, but it has increased the amount of time and effort we must spend in making up a Journal. Our IBM Selectric typewriter is a great machine with many features, but it doesn't have fractional spacing. Justifying has been done by juggling the copy to make it fit, a hard way of doing the job. Try typing a paragraph or two and ending up with all lines the same length, and you will see what we mean!

Commercial printers justify by varying the spacing of letters and words, but the equipment they use is much too sophisticated and expensive for our use. However we have discovered that there are some typewriters at a more modest cost that have fractional spacing. The machine best suited to our needs is the IBM Executive model, and with approval of our Trustees, we recently placed an order with IBM for one. We expect to have it available for making up the next Journal.

The immediate cost of this new typewriter will be met from our BCPSG Treasury. However, we feel that there is a need to replace at least a part of the amount so spent, to maintain a comfortable treasury balance. A "Typewriter Fund" has been started, and three of your officers have contributed a total of \$100 to start it off. Donations of any sort will be most welcome, and may be either in cash or lots for our auctions.

The new machine will ease our burden a lot. It might even give us enough free time to get in a little work on our long neglected collections!

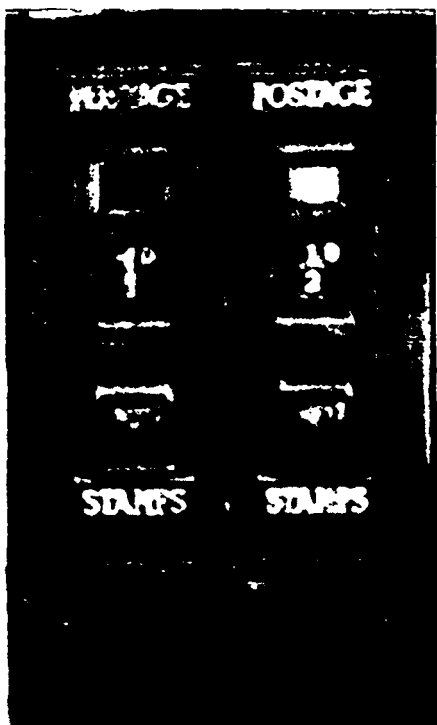
Many thanks to all who sent us Holiday Greetings.

Fred

THE BARBADOS COIL STAMPS

by Eric H. Heyer

The Scott and the Gibbons catalogues do not show any coil issues for Barbados, so I was puzzled to discover on several visits to the G.P.O. in Bridgetown in 1968, that there were some old stamp dispensers mounted in the walls. I photographed one, and tried to learn from G.P.O. personnel how and when these machines had been used, but they were not sure whether they had dispensed coils or booklets. Hoping that some of our members interested in Barbados might be able to shed light on this matter, I contacted several. Dr. John Lockie kindly sent me copies of David Addey's articles on "Commonwealth Stamp Coils" which appeared in *Gibbons Stamp Monthly* from March to May 1963, but I found no Barbados coils mentioned therein.



Our member friend Frank Gibbons of Barbados, provided a bit of local research for me on this matter, and he learned from an old former Postmaster General that in the time of Postmaster General G.F. Sharp these vending machines were employed to dispense coils. As the latter gentleman began his tour of duty as PMG on the 27th August, 1931, the machines must have been placed in use after that date. These machines always gave a great deal of trouble, and sometime between the years 1944 and 1949, during the reign of PMG Armstrong, all were taken out of service. It is indicated that four were originally installed, but only two are presently visible. As can be seen in the photo, neither is in very good condition. Booklets were always sold only over the counter, and neither coils nor booklets have been employed in Barbados in recent years.

Paul Larsen of Illinois came up with another fine bit of information. From the lists of *Printings of KG VI Colonial Stamps* compiled by Potter and Shelton, which were first published in *Stamp Collecting* magazine and later came out in book form, he sent me the following data, which throw some light on the coil stamps:

Included in the various dispatches of the ½d green of the 1938-1947 issue, Sc. 193, SG 248, there were three lots of coil stamps that consisted of 20,000 in July 1937, 20,000 in October 1938 and 30,000 in July 1940. The perforation of all three shipments is thought to be 13¾ x 13, but one or more could have been perf. 14.

More precise data were given for the 1d red, Sc. 194, SG 249. Three dispatches of coil stamps were made, but with different perforations for each dispatch. In July 1937, 40,000 stamps with perf 13 3/4 x 14 were shipped; in October 1938, 40,000 of perf. 13¾ x 13 were sent out; and in July 1940 there was a final shipment of 40,000 stamps, these being perf. 14.1.

Since there is some question about the ½d green perforations, any information which will settle this will be appreciated. Does any member have examples of this item?

This apparently does not tell the complete story of the Barbados coils. Both Paul Larsen and I have sets of coil samples which consist of 4 stamps in each strip with the overlap joint between the second and third stamp. However, these coils are not the ones previously mentioned, but the ½d bistre, perf. 13½ x 13, Sc. 193A, SG 248b and the 1d green, perf 14 x 14, Sc. 194A, SG 249b, both issued in 1942. Neither of

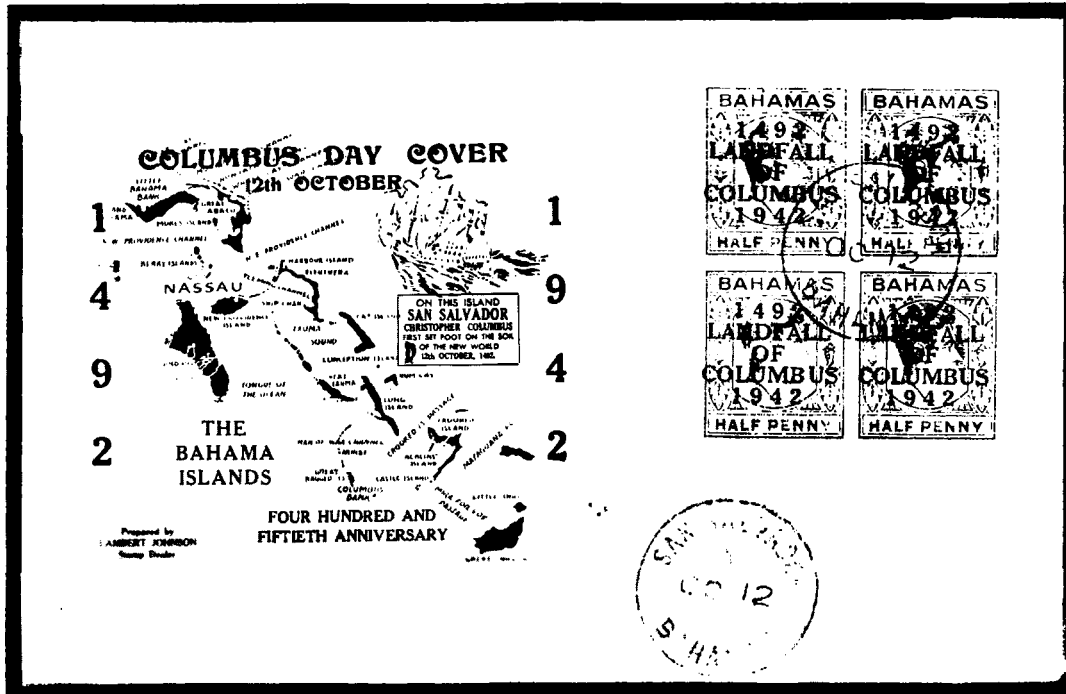
these coils has shown up on any lists known to Paul or myself, but it seems obvious that if these are genuine coils and not the product of a philatelic faker, at least one shipment of each value took place after the colors for the ½d and 1d definitive stamps were changed in October 1942 and before the coil machines were retired.

Bahamas Landfall Varieties

by H. Moreton Black

Ever since they were first issued on 12th October 1942, the fascinating stamps that commemorate the Landfall of Columbus on San Salvador Island in the Bahamas in 1492, have continued to puzzle collectors with their many varieties of overprint, as well as differences in paper and shade. One of the chief delights of that issue is that even after a period of three decades, new discoveries are still being made.

For many years it was believed that the 8d value of this set did not exist with the COLUMBUS variety, but this is now a well authenticated rarity, there being at least seven examples known. Even scarcer is the 'FULL STOP after COLUMBUS' variety which is sometimes found on stamp 24 of the 3/- value, and which was thought not to exist on the 2/- stamp. It was ten years before a single example was discovered on this latter value, and now I have recently had the satisfaction of finding an example of that variety in a positional block of the 2/- value, in a collection I bought.



The varieties of the Landfall overprint were exhaustively described in two articles I wrote for *Stamp Collecting* magazine some twenty years ago. These appeared in the 22nd June 1951 and 25th January 1952 issues of that publication. However, in view of the further discoveries since then, this would seem to be a suitable time to get the record up to date. It will be remembered that the stamps were all overprinted locally at the offices of the *Nassau Guardian*, in panes of sixty stamps. The pane structure consisted of ten horizontal rows of six of the King's Head values, twelve rows of five of the Waterlow printed 4d, 6d, and 8d, and five rows of twelve of the 2/- and 3/- values in the Seal of the Colony design. All of the overprinting is in black ink. It is interesting to note that the basic stamps were produced by three different printers, De La Rue, Waterlow, and Bradbury, Wilkinson.

THE KING'S HEAD TYPE

As is now well known, there were two settings of the overprint on these stamps, and these settings produced different varieties, particularly in the bottom row where a shift to the right of 'COLUMBUS' on stamps 56-59 of the first setting was corrected on the second setting. There was also an intermediate setting, which is seen only on the very lowest values, and which produced the 'DOT in the O of OF' variety that is found on stamps 55 and 56. Neither of these two flaws is to be found on most of the sheets in the second setting, but a similar variety appeared on stamp 58 later.

There are shades of most values. However, the 1½d value was wholly on the original printing of this stamp with brown gum. In both settings the sheet serial number on the 1½d value was applied vertically, opposite stamp 1 of the left-hand pane and 60 of the right-hand pane, but I have come across some panes of a late printing of the 1½d value in the first setting in which the sheet serial number is above stamp six, horizontally, as with all the other values. The 1/- value appears in three easily identifiable shades: grey and scarlet on lined paper, brownish black and crimson, and black and pink. They seem to have been printed in that order, since the lined paper shade can be found in both the first and second settings, as is also true for the 5/- value.

I am not at all impressed by the double overprint on the ½d value. It looks to me much more like a double offset caused when ink which was wet affected a part of one sheet as the stamps were stacked in sheets after application of the overprint. The shadow overprint, found on stamps 59 and 60 of the 1/- value in late printings, was undoubtedly caused by a slight shifting of the paper during the overprinting and is not a proper double overprint. I am convinced that no sheet went through the press twice. The more important constant overprints are:

THE FIRST SETTING

STAMP	9	'Apostrophe' between A and L
STAMP	24	Dot in top of first A (late printings)
STAMP	36	Large dot in F of OF (late printings)
STAMP	42	Dot between A and N (late printings)
STAMP	48	Defective 2 in 1942
STAMP	50	Dot in 2 of 1942 (some sheets)
STAMP	56	Dot in O of OF
STAMPS	56-59	Shift of COLUMBUS to the right.

THE INTERMEDIATE SETTING

STAMP	1	Dot filling top of first A
STAMP	3	Dot filling top of first A
STAMP	10	Break in F of LANDFALL (late printings)
STAMP	24	Dot in top of first A
STAMP	48	Defective 2 in 1942
STAMP	55	Dot in O of OF
STAMP	56	Dot in O of OF (but shift corrected)

THE SECOND SETTING

STAMP	1	Large dot in F of LANDFALL (late printings)
STAMP	2	Dot in top of N
STAMP	6	Dot between O and L (late printings)
STAMP	10	Break in F of LANDFALL
STAMP	12	Dot in Base of first A (early printings)
STAMP	12	Broken OF (some sheets)
STAMP	14	Dot in second U

THE SECOND SETTING (cont.)

STAMP	35	Large dot in O of OF	(late printings)
STAMPS	37, 43, 49	Break(s) in S	
STAMP	44	Dot in lower curve of S	
STAMP	48	Defective 2 in 1942	
STAMP	55	Dot in Base of N	(late printings)
STAMP	56	Dot in O of COLUMBUS	(late printings)
STAMP	58	Dot low in O of OF	
STAMP	59	Broken second A	(late printings)
STAMP	60	Shadow overprint 1/- only	(late printings)

The fact that certain varieties such as the defective 2 in 1942 on stamp 48 and the slight shift to the right of LANDFALL on stamp 51, occur on all settings, proves to us that the same forme of type was used throughout the overprinting, but with minor adjustments (such as correcting the first setting shifts) and cleaning from time to time. In general, as would be expected, the varieties multiplied as the printing continued, and the majority of the varieties mentioned above can be found on all of the values to the fl. An exception is the very prominent 'Broken OF' on stamp 24, which seems to occur only on late printings of the three higher values, having been recorded on sheets 1232 to 1306 of the 1/-, on sheets 017 to 032 of the 5/-, and on sheets 023 to 029 of the fl value.

THE WATERLOW PICTORIALS

The Waterlow stamps can be found on both the original cream and the whiter paper of 1942. The 'Filled A' on stamp 60, like the 'Broken 2' on stamp 27, is found on all but a few early sheets. But, the broken L which caused the 'COLUMBUS' variety that is found on stamp 22, must have occurred late in the overprinting, as used examples of the very scarce 8d value show postmarks in JAN-FEB 1943, near the end of the six months period during which the stamps were current. I have some blocks which show the development of this variety. At one point in the printing a roughly triangular flaw developed on one right-hand marginal stamp of the 6d value between the U and S of COLUMBUS, but I have not seen this variety on either of the other two values. I have seen an example used on 18 JAN 1943.

STAMP	2	Damage to base of 1 in 1942
STAMP	22	'COLUMBUS' variety (some sheets)
STAMP	27	Broken 2 in 1942
STAMP	56	Broken N, Damage to back of D
STAMP	59	No back serif to first L of LANDFALL
STAMP	60	Solid first A in LANDFALL

THE SEAL OF THE COLONY TYPE

The 2/- and 3/- values can be found in a variety of shades and papers, of which the 2/- on toned paper is rather scarce. The first overprinting of the 2/- was on the royal blue shade, and later on stamps with the center in purple, brownish-black and slate-grey. The 3/- value can be found either in the scarce yellow-green shade on white paper or in the duller-green shade on toned paper, as well as on white paper. Four distinct states of the overprint can be distinguished with differing varieties caused by damage to and shifting of the type. The main varieties are:

STAMP	1	1492 and OF both shifted to left	(early printings)
STAMP	1	Only OF shifted to left	(later printings)
STAMP	4	Top curve of S broken	(some sheets)
STAMP	8	Dot in top curve of S	

STAMP	9	LANDFALL shifted to left	
STAMP	10	Broken 2 in 1492	(early printings)
STAMP	13	Dent in top of C	(later printings)
STAMP	14	Top of letters UM missing	(later printings)
STAMP	19	Lower and longer dot in top curve of S	
STAMP	24	Full stop after COLUMBUS	(some sheets)
STAMP	25	Last L in LANDFALL broken	(middle printings)
STAMP	25	Large dot in 1 of 1492	(latest printings)
STAMP	38	1492 shifted to right	(early printings)
STAMP	38	1492 shifted slightly left	(later printings)
STAMP	39	1492 shifted to left	(early printings)
STAMP	48	Dot in base of second A	(later printings)
STAMP	51	Broken top to 2 in 1492	
STAMP	59	Dropped first A in LANDFALL	
STAMP	60	1492 and OF both shifted to right	(early printings)
STAMP	60	Only OF shifted to right	(later printings)

While the printer on several occasions noticed and corrected shifts and broken letters, he failed to see such things as the shifts of the word OF on stamps 1 and 60, and the very obvious shift to the left of LANDFALL on stamp 9, both of which can be found throughout all the printings. It is thus easy to differentiate the shifts of 1492 on stamps 1 and 60 from similar shifts on stamps 39 and 38, as the former will always have the word OF shifted as well.

In correcting the shift of 1492 on stamp 38, the printer overdid the correction and the date 1492 is positioned slightly to the left in later printings. I find stamp 25 of particular interest. It began with no flaws at all, developed the 'Broken L' and next the 'Dot on the 1 of 1492'. Then in the final state one finds the 'Broken L' corrected while the 'Dot on the 1 of 1492' continued unnoticed.

The scarcest variety by far, is the 'Full Stop after COLUMBUS' on stamp 24, a stamp which also has a small dot in the F of OF. The Post Office authorities noticed the mistake at the time of issue, and they removed stamp 24 from some sheets of the 3/- value in early deliveries. The variety has been recorded on sheets bearing serial numbers between 518 and 535 for the 3/- value, and for the 2/- value it is known on sheet 048, but strangely does not appear on either sheet 046 or 050. This confirms one's suspicions that the sheet serial numbers bear little relation to the order in which the sheets were actually overprinted.

I shall be happy if these notes motivate Bahamas collectors to have another look at their stamps of the Landfall series, and I look forward to hearing from any who can add something more to our knowledge of these most interesting and really very handsome stamps.

BARBADOS - MORE TO PAY & A NEW EKD---- by Michael Sheppard

I recently obtained a postcard sent from Barbados to Dominica in 1909. The card is franked with a ½d Seal of Colony adhesive, and bears a strike of a tax mark, M9b of Benwell & Britnor. Alongside this mark is a blue manuscript figure 1d, to show the amount to be paid. Am I correct in saying that at that time the inter-island postcard rate was 1d, and that the 1d to pay represented a fine of double the amount of the unpaid postage, or was the rate 1½d with the 1d to pay simply the amount needed to make the correct rate?

This is a new EKD for the M9b mark, extending it back 12 years to 28 AUG 1909.

THE CHRONOLOGICAL POSTMARK HISTORY
OF THE POST TOWNS OF JAMAICA
(Continued)
by Robert Topaz

<u>ULSTER SPRING</u>		Trelawney	Opened 7 March 1881	
1.	TRD Type 1	black ink, not normally dated	20 MY 81	
2.	PSQC1	A index	3 FE 82	10 JA 18
		B index	26 AU 87	22 AU 9?
		C index	23 JA 83	4 MR 85
		No index	23 DE 92	28 DE 16
3.	D.R. 29 mm, 3½ mm letters, dots		13 JA 23	18 DE 41
4.	B 2	*	17 AP 44	1 AP 63
5.	MSR	*	2 JY 63	16 JY 69
6.	MSR 1968	*	2 JY 68	22 MY 71

Forwarding Office: Mandeville

<u>UNION HILL</u>		St. Mary	Opened 27 July 1922	
1.	TRD Type 21	black ink	5 AU 23	
2.	D.R. 30 mm Thin inner ring, often appearing as one heavy ring.		5 DE 22	2 FE 70
3.	MSR (Issued 13 AU 56)		FE 57	26 FE 70
4.	TRD Type 37	black ink	DE 67	

Forwarding Office: Oracabessa

<u>UNITY</u>		St. Andrew	Opened in 1961	
1.	TRD Type 37a	violet ink	4 OC 61	7 MR 62
2.	MSR	*	8 NO 64	11 SP 68
<u>UNITY VALE</u>		St. Elizabeth	Opened October 1962	
1.	TRD Type 37a	violet ink	1 DE 62	27 OC 65
2.	TRD Type 37	violet ink	13 JU 67	12 JU 68
3.	MSR 1968	*	20 AU 68	11 JA 71

Forwarding Office: Santa Cruz

<u>UNIVERSITY COLLEGE OF THE WEST INDIES</u>		St. Andrew	Opened 27 November 1948	
1.	TRD Special	violet ink	27 NO 48	1 DE 48

A post office was set up in the Faculty Building of the new university, a short time after the buildings at Gibraltar Camp were taken over. During this period the "receiving" or "office" stamp of the school was used as a canceler for some mail, and at least 8 registered letters postmarked thus have been recorded. The registration mark was similar to those that were used at the military installations in St. Andrew.

This mark was used in its normal manner in later years, and strikes of it are found on mail, particularly in the 1950-1951 era, but it was not used to cancel mail in this period.

See MONA.

<u>UP PARK CAMP</u>	St. Andrew	Opened 29 April 1884	
1. TRD Type 2, date in ms. black ink		29 AP 84	8 JY 85
2. A38 Type N Obliterator		6 JU 84	10 JA 85
3. PSQC1		23 FE 85	30 JU 10

This office was closed when CROSS ROADS opened on 4 January 1909.

A TRD Type 37 was prepared for use during the Girl Scout Jubilee, but was not used, and only trial strikes in violet ink are known. A special TRD of more elaborate design was used instead. Noted 14 JY 65 to 9 AU 65.

<u>VALLEY PIECE</u>	St. Ann	Opened 22 March 1963	
1. TRD Type 37 violet ink This mark has the letters of the name so closely spaced as to practically touch each other at the base. The name measures 23½ mm along the bottom. The inner frame appears broken on most strikes.		5 AP 63	7 MY 64
2. TRD Type 37 violet ink The letters of the name are well spaced and measure about 29 mm at base.		11 AU 65	13 SP 67

Forwarding Office: Browns Town

<u>VAUGHANSFIELD</u>	St. James	Opened 2 April 1951	
1. TRD Type 49 violet ink Denticulated outer ring with a single inner ring. The office name is in plain caps, but the word JAMAICA is in smaller seriffed caps, followed by a stop.		6 AP 51	8 DE 51
2. B 4 * Spelled VAUGHNSFIELD		22 MY 51	10 MR 56

Closed when FLAMSTEAD GARDENS opened about December 1956.

Forwarding Office: Point

<u>VERE</u>	Clarendon	Opened about 1788	
1. T 3	21 x 11 mm	28 FE 08	23 MY 08

- | | | | | |
|----|-------------------------------|-----------------------|---------------------|--------------------|
| 2. | T 3 | 15 x 11 mm | 23 MY 38 | |
| 3. | P 2 a | black ink
blue ink | 26 FE 40
1 OC 44 | 8 MY 63
8 JY 53 |
| 4. | A78 Type H Obliterator | | 16 SP 59 | 6 MY 62 |
| 5. | P 11, 20 mm (Issued 11 MY 63) | | 8 DE 63 | 4 DE 73 |
- Indices A and C have been noted. Foster notes 1874-no date.

Vere changed its name to ALLEY about 1874-75.

- VICTORIA TOWN Manchester Opened 26 August 1920
- | | | | | |
|----|--------------------------|------------|----------|----------|
| 1. | TRD Type 21 | violet ink | 8 NO 20 | 8 FE 21 |
| 2. | D.R. 28 mm, 3 mm letters | | 21 SP 23 | 29 MY 71 |
| 3. | TRD Type 37 | violet ink | 27 JY 67 | 10 JY 71 |
- This TRD was used in conjunction with changeover of this office to a Postal Agency on 27 July 1967.

Forwarding Office: Toll Gate

- VINEYARD PEN St. Andrew Opened 19 November 1934
- | | | | | |
|----|---------------------------|--|---------|----------|
| 1. | D.R. 30 mm, 3½ mm letters | | 3 JA 35 | 17 JA 42 |
|----|---------------------------|--|---------|----------|

The name of this office was changed to VINEYARD TOWN on 12 March 1943.

- VINEYARD TOWN St. Andrew Renamed 12 March 1943
- | | | | | |
|----|-------------------------------|-----------------|---------------------|---------------------|
| 1. | B 2 | | 5 AU 43 | 7 JY 62 |
| 2. | B 3 (Issued JAN 54) | w/o *
*
* | 15 SP 54
2 MY 67 | 28 OC 70
9 AU 68 |
| 3. | MSR (First issued 7 OCT 55) * | | 26 MR 56 | 16 AU 71 |
- Two more dies were sent out on 13 AUG 56. Probably more than three dies in all were issued.

Kingston Postal District 3.

- WAIT-A-BIT Trelawney Opened 22 September 1921
- | | | | | |
|----|-------------------------------------|------------|----------|----------|
| 1. | TRD Type 21 | violet ink | 4 NO 21 | 29 SP 23 |
| 2. | D.R. 28 mm, 3 mm letters, black ink | | 12 MY 22 | 28 MR 39 |
| | | violet ink | 9 AP 23 | |
| 3. | B 1 (Issued 15-17 FEB 40) * | | 6 JA 41 | 11 MY 67 |

Forwarding Office: Mandeville

- WAKEFIELD Trelawney Opened 14 July 1930
- | | | | | |
|----|----------------------------|------------|---------|----------|
| 1. | TRD Type 25, "193" in die. | violet ink | 5 AU 30 | 25 NO 30 |
|----|----------------------------|------------|---------|----------|

2. D.R. 29 mm, 3½ mm letters 30 MY 35 22 DE 70

Forwarding Office: Falmouth

WALDERSTON Manchester Opened 30 June 1894

1. TRD Type 8 black ink 7 NO 94
The "94" is in the die, usually not dated.
2. D.R. 27 mm, 3½ mm letters, dots black ink 11 FE 95 26 DE 53
blue ink 12 AP 04 22 MY 05
3. B 3 (Issued JAN 54) 19 MR 54 20 JY 71

Forwarding Office: Mandeville

WALKERSWOOD St. Ann Opened 31 March 1890

1. P 13 black ink 7 AP 90 18 JY 93
Many early strikes have a "jump" in the year date.
2. D.R. 27 mm, 3 mm letters 6 FE 93 11 MR 12
The letters in Jamaica are unusually close together.
3. D.R. 27 mm, 3 mm letters 2 JA 13 29
Name is spelled in two words. Tall thin letters.
4. D.R. 28 mm, 3 mm letters 6 MY 35 30 AP 69
5. MSR * 2 DE 61 17 MY 71

Forwarding Office: Moneague

WALTHAM GARDENS St. Andrew Opened August 1961

1. TRD Type 37a violet ink 16 AU 61 4 JU 62
2. MSR * 4 JU 62 8 SP 64
3. MSR 1968 * 4 OC 68 26 JU 71

This office was closed and then reopened on 16 SP 68. It again closed on
? JA 71 and reopened on 21 AP 71.

Kingston Postal Zone 11.

WAREIKA Kingston Opened 1 December 1955

1. TRD Type 36b violet ink 1 DE 55 1 MY 56
2. MSR (Issued 13 AU 56) * 18 MR 57 31 MR 71

This office was located on D'Aguilar Road. It closed there on 9 MY 65 when
the PM resigned and sold his store, and reopened 21 SP 65 at 1 E. Glasspole
Avenue.

WARMINSTER St. Elizabeth Opened 16 April 1971

1. TRD Type 37 violet ink 16 AP 71

Forwarding Office: Myersville

WARSOP Trelawney Opened 23 July 1913

1. TRD Type 16 with "1913" in the die violet ink OC 13
2. D.R. 28 mm, 3 mm letters 8 SP 19 11 AP 39
3. B 1 * 31 JA 41 17 JY 70
4. MSR * 6 MR 60 23 JU 70

Forwarding Office: Balaclava

WARWICK CASTLE St. Mary Opened 18 November 1967

1. TRD Type 37 violet ink 24 NO 67 3 FE 70

Forwarding Office: Gayle

WATCHWELL St. Elizabeth Opened 9 September 1947

1. TRD Type 37 violet ink 9 SP 47 22 JU 48
2. B 1 (Received 22 MY 48, put * violet ink 11 OC 48 13 NO 48
into use by 23 JU 48) * black ink 30 MY 50 15 AP 67
3. MSR 1968 * 14 JU 68 12 JU 71

Forwarding Office: Lacovia

WATER LANE Clarendon Opened 14 September 1966

1. TRD Type 37 violet ink 22 SP 66 17 JY 68
2. MSR 1968 * 17 JY 68 28 JY 71

Opened as sub-postal agency in 1963. Changed to P.A. on 14 Sept. 1966.

Forwarding Offices: May Pen & Race Course

WATERLOO Manchester Opened 8 December 1967

1. TRD Type 37 violet ink 12 DE 67 4 MR 70

Forwarding Office: Harry Watch

WATER MOUNT St. Catherine Opened 23 August 1921

1. TRD Type 21 violet ink SP 21 16 NO 21
2. D.R. 28 mm, 3 mm letters 6 MY 24 29 MR 71
Very thin rings finally merging into one heavy ring. Noted used in violet.

Forwarding Office: Spanish Town

<u>WATER WORKS</u>	Westmoreland	Opened 3 October 1958
1. TRD Type 37a	violet ink	15 OC 58 7 OC 60
2. MSR	* black ink	22 JY 60 18 AP 67
	* blue ink	1 FE 60
3. MSR 1968	* black ink	15 FE 71 16 MR 71

Forwarding Office: Petersfield

<u>WATSONS HILL</u>	Manchester	Opened 15 December 1872
1. F95 Type 0 Obliterator		23 MY 82 9 MY 00
2. P 11	Index A	14 OC 74 21 JA 23
3. D.R. 27 mm, 3 mm letters Apostrophe in Watson's		10 FE 23 19 AP 54
4. D.R. 28 mm, 3 3/4 mm letters Apostrophe in Watson's		30 MY 33 7 DE 66
5. MSR (Spelled Watson Hill)	w/o *	4 MR 68 27 MR 71

Forwarding Office: Santa Cruz

<u>WATT TOWN</u>	St. Ann	Opened 9 August 1897
1. TRD Type 8	black ink	18 OC 97 9 JY 00
2. D.R. 27 mm, 3 mm letters, dots	black ink	3 JU 98 16
	blue ink	25 MY 05 19 NO 10
3. D.R. 28 mm, 4 mm letters		12 OC 27 13 OC 32
4. D.R. 30 mm, 3½ mm letters		20 AP 40 16 MR 71

Forwarding Office: Alexandria

<u>WELCOME HALL</u>	St. James	Opened 30 November 1934
1. D.R. 29 mm, 3 mm letters		6 DE 35 24 DE 70

Forwarding Office: Montego Bay

<u>WESTPHALIA</u>	St. Andrew	Opened 1 May 1954
1. TRD Type 37	violet ink	8 MY 54 10 MY 54
	Date stamped separately.	
2. MSR (Issued 1 June 1954)		7 JY 54 11 MR 68
3. MSR 1968	*	2 DE 68 30 DE 69

Forwarding Office: Gordon Town

<u>WEST PROSPECT</u>	St. Catherine	Opened 1957
----------------------	---------------	-------------

- | | | | | |
|----|--------------|------------|----------|----------|
| 1. | TRD Type 47b | violet ink | 7 DE 57 | 19 AU 58 |
| 2. | MSR | * | 29 SP 58 | 2 JY 71 |

Forwarding Office: Bog Walk

WHITE HALL St. Thomas Opened 13 April 1946

- | | | | | |
|----|--------------------------|------------|----------|----------|
| 1. | TRD Type 37 | violet ink | 13 AP 46 | 30 AP 48 |
| 2. | B 1 (Issued 23 DEC 1946) | * | 22 MY 51 | 13 JY 68 |
| 3. | MSR 1968 | * | 9 AU 68 | 11 AU 71 |

Forwarding Office: Morant Bay

WHITEHORSES St. Thomas Opened 16 September 1931

- | | | | | |
|----|---------------------------|--|---------|---------|
| 1. | D.R. 29 mm, 3½ mm letters | | 9 AU 39 | 6 MR 71 |
|----|---------------------------|--|---------|---------|

WHITEHOUSE Westmoreland Opened in 1892
Opened in place of KINGS, about 2 miles away.

- | | | | | |
|----|---------------------------------|-----------|----------|----------|
| 1. | PSQC1 | | 20 JU 92 | 28 AU 27 |
| 2. | D.R. 28 mm, 3 mm letters | | 12 MR 29 | 20 OC 71 |
| 3. | MSR | | 8 JU 60 | 12 MR 71 |
| 4. | TRD Type 37 (Name in two words) | black ink | 20 MY 67 | 17 JY 67 |

Forwarding Office: Black River

WHITE RIVER St. Ann Opened about 1809

An office of this name was opened about 1809 and closed before 1818. No postal markings of this period have yet been found. (November 1971)

A postal agency of this name was opened on 1 November 1961.

- | | | | | |
|--|--------------|------------|----------|----------|
| 1. | TRD Type 37a | violet ink | 1 NO 61 | 3 JU 68 |
| A strike has been noted dated 24 OC 61. There is a question as to the correctness of this date or the date of opening. | | | | |
| 2. | TRD Type 37 | violet ink | 17 JY 67 | 14 NO 67 |
| 3. | MSR 1968 | * | 25 JY 68 | 24 SP 70 |

Forwarding Office: Ocho Rios

WHITE SANDS BEACH St. James Opened 4 January 1936

Originally open only during JAN-APR tourist season. Closed from 1939 to 1946. Reopened 1 FE 46.

- | | | | | |
|----|--------------------------|-----------|----------|----------|
| 1. | TRD Type 25 | black ink | 7 JA 36 | |
| 2. | D.R. 29 mm, 3 mm letters | | 23 MR 36 | 9 MR 39 |
| | Tall thin letters | | AP 47 | 13 AU 71 |

WHITFIELD PEN

St. Andrew

Opened 27 January 1929

1. D.R. 28 mm, 3 mm letters

27 JY 31

26 NO 57

Name changed to Whitfield Town on 12 March 1943, but the old canceller was continued as an occasional dater for some years thereafter.

The concluding installment of these listings will be published in the next Journal.

THE PRESIDENT'S PAGE

I am sure that many of you have been interested to read the names of new applicants for membership which appear in each Journal. I wonder whether you have stopped to think just how these people heard of us in the first place. There is a tendency to assume that an organization such as ours grows by its members persuading friends to join. A glance at the addresses of our new applicants makes it obvious that in the majority of cases this is not true, for they live in all parts of the world.

It may have been some time since you looked at the list of BCPSG officers appearing on the inside front cover of each issue of the Journal. When you did, you no doubt noted the name of CHARLES E. CWIAKALA listed under "Public Relations". Chuck's job is to keep the philatelic press of the world alerted to our Group's activities, and for the last few years he has been performing that task most effectively. He sends out press releases which vary from a one-page summary of the contents of a specific Journal issue to copies of Journal articles. These go to the editors of philatelic publications in all parts of the world, and each release includes a short paragraph telling of our Group, and inviting interested readers to obtain further information by contacting our Membership Chairman or U.K. Representative. Upon occasion, Chuck has even commissioned members to prepare special articles to be thus utilized.

Naturally, not all of Chuck's releases are published by each editor receiving them, but the high percentage of acceptance attests to the high quality of your articles. Editors receive much more material in the form of press releases than they can use, so only the best ones get published. I should mention here, that other methods are employed by Chuck to recruit new members. He scans the membership lists of various other philatelic societies for names of those indicated as collecting stamps of one or more British Caribbean countries, then either Chuck or Stan Durnin writes each a personal letter, inviting him to join the BCPSG.

I write of these things for several reasons. First, I want to be sure that all are aware of the debt of gratitude we owe Chuck for his excellent publicity work. With his help, many have come to learn of the advantages of being a member of the BCPSG. Second, I feel you should know that when you write for our Journal, you may also be writing for a second publication in England, India, Australia, or elsewhere.

I am always surprised to hear what happens to my own articles. Recently, I learned by way of a letter from Reg Lant that my story of Cunard Mail Boats between Halifax and Bermuda which was originally published in our April 1970 Journal, was reprinted in the London Weekly *Stamp Collecting* for 14 August 1971. A previous article which I wrote for the Journal had been rerun in Australia. This is happening to many of the articles you read in the Journal. It should make you share my pride in being a member of the British Caribbean Philatelic Study Group.

Jack

SOME NEW ANTIGUA DATA

by George W. Bowman

In my several previous articles I have discussed 20th century sub-post office (SPO) history on the island of Antigua, as described in the *Leeward Islands Gazette*. Now I wish to conclude my report on these SPO's by presenting that data I gathered from Gazette microfilm files prior to 1901. Before doing so, however, I want to clarify certain statements I previously made regarding the Grays Farm SPO.

On page 17 of BCPJ W/N 59, where I discussed the history of the SPO at Green Bay, I expressed doubt whether that SPO had been closed continuously from 1961 until 1967, when according to Stan Durnin in BCPJ W/N 58, the SPO reopened as Grays Farm in the general store of Mr. Kenneth Richardson. This doubt was also reflected in my table (Appendix II) appearing in BCPJ W/N 60, and its accompanying Key, where I qualified my Grays Farm comments with a lot of "if's".

I am now convinced that Grays Farm was closed continuously from 1961 to 1967. I am absolutely certain that it was not in operation in late 1966 because of data that I have recently seen in the *Crown Agents Bulletin* publicizing the Antigua definitives released on 1 November of that year. In discussing the 25¢ value of that set, that pictures the St. John's G.P.O., the Bulletin says "...a daily island-wide collection and distribution service through the chain of twelve sub-post offices.." While all twelve offices are named, Grays Farm is not one of them.

By all that's logical, this portion of the article---dealing primarily with the SPO history of the 1800's---should have been published before my earlier discussions of "Some New Antigua Data". It has only been fairly recently, however, that files of the pre-1900 era were made available to me.

The best starting place for this chapter is a place of transition---that year where the old century ties in with the new. In the *Leeward Islands Gazette* (LIG) of 13th September 1900, there appeared a notice entitled "Antigua Inland Post Regulations", a notice which I think proves the validity of my "Rule of Eleven" which I described in my writings in the August 1970 Journal. Only the first paragraph of the notice is of concern here, and I will quote it exactly:

1. Letters and newspapers will be received for transmission by Inland Post at the General Post Office in St. John's and at the following District Post Offices:

1. At Parham in the Parish of St. Peter
2. At St. Stephen's in the Parish of St. Phillip
3. At Freetown in the Parish of St. Phillip
4. At All Saints in the District of All Saints
5. At English Harbour in the Parish of St. Paul
6. At Newfield in the Parish of St. Phillip
7. At Bolans in the Parish of St. Mary
8. At Old Road in the Parish of St. Mary
9. At Barnes Hill in the Parish of St. George
10. At St. James in the Parish of St. John
11. At Bethesda in the Parish of St. Paul

between the hours of 8:00 a.m. and 4:00 p.m.---Sundays and public holidays excepted.

The significant fact here is that the number of SPO's totals eleven, which verifies

that each SPO listed across the top of the chart on page 114 of BCPJ W/N 56 was indeed in operation prior to its first mention in post-1900 LIG's, as is shown in the chart. I consider this regulation as the final link in solving the major problems regarding Antigua's 20th century SPO history.

I do not propose to delve into the history of the Antigua Post Office prior to 1872 when the first LIG was published. The earliest entry in a LIG of any significance to this study is that of 2 January 1879, where it is announced that:

The Governor has assented to the Bill passed by the Legislative Council of Antigua, No. 12 of 1878, entitled, "An Act to Abolish the Post Office and the Office of Deputy Postmaster at English Harbour."

An entry in a subsequent edition of the LIG, that of 10 April 1879, stated that the Governor has been informed, "Her Majesty would not be advised to exercise her power of disallowance with respect to Antigua Act No. 12 of 1878."

For the BWI postal historian, this Act No. 12 of 1878--and I regret that I have not seen a copy of it--is a document of great importance. It boldly announces that the Government intends to shut down the Post Office at English Harbour, for reasons one can only guess, at least until somebody can find a copy of the Act. English Harbour was in fact subsequently closed, a happening which must be inferred from wording of the Antigua Postmaster's Report for 1878, published in the LIG of 10 July 1879. In this report there is no reference whatsoever made to English Harbour. In describing the activities of the Inland Post for 1878, the report talks only of "Receiving Officers"--whatever they were--at the two villages of All Saints and Old Road.

Thus, as an SPO, the Harbour appears to have drawn its last breath in 1878, but now we are faced with a pair of conflicting inferences. If an Act of 1878 proposed to close the SPO at English Harbour, that SPO obviously must have been in existence in 1878!

It is difficult to believe that an SPO could have been open for an entire year, but that nothing happened there that merited notice in an official document such as the Postmaster's Report. I am inclined to believe the report should have had something to say about English Harbour, but for some mysterious reason the Postmaster decided to omit it.

Another Postmaster's Report, dated 6 January 1881, covering the year 1880, appeared in the LIG of 13 January 1881. This report, specifically explaining the activities of the Inland Post, gave comparative figures of receipts and expenditures for 1878, 1879, and 1880. Again as in the previous report, English Harbour is not mentioned, though All Saints and Old Road are again specified as being sites of the mysterious "Receiving Officers". The salary of the officer at All Saints was listed as double that of the officer at Old Road. This may indicate the relative amounts of postal traffic handled by the two officers.

The next chronological LIG item of importance is "Antigua Inland Post Amended Regulations" appearing in the newspaper of 24 November 1881. These rules were put into effect on 28th November of that year. The most important paragraph from our point of view is one giving the schedule for despatch of mails from the Inland SPO's:

DISTRICT A:	The Police Station at Bolans The School Room at Old Road
DISTRICT B:	The School Room at All Saints The Police Station at English Harbour

DISTRICT C: The Police Station at Parham
The Police Station at The Grange

DISTRICT D: The Police Station at Barnes Hill

Thus, we now see the rebirth of English Harbour as a mail handling facility. Also, we see the designation of four more places as SPO's for the first time, at least as regards their appearance in the LIG. We can reach the conclusion that the Harbour was reopened at least as early as 28 November 1881, and we can also say that Barnes Hill, Bolans, Parham, and The Grange were opened at least by the same date. But we cannot say for sure if any or all of the five were functioning before that date, or in the case of English Harbour, between 1 January 1879 and 28 September 1881. The Grange, incidentally, was another name for Newfield.

The next LIG SPO announcement appeared in the paper dated 27 December 1883. It was also a notice of "Antigua Inland Post Amended Regulations". These rules, to become effective on 6 January 1884, were those which in abbreviated form were mentioned by Bill Cornell in BCPJ W/N 42, in discussion of "interesting postal history data from G.N. Holmes". Nine SPO's are listed in this regulation, consisting of all of those specified in the 24 November 1881 edition except Barnes Hill, plus three additional ones at Freetown, St. James', and St. Stephen's.

These same nine offices were again listed in "Inland Post Regulations" effective on 28 September 1886 and published in the LIG of 18 October of that year. I could not find any LIG announcements indicating a change in SPO status between 6 January 1884 and 18 October 1886. Therefore, the primary point to be noted here is that at some point in the time span between 28 November 1881 and 6 January 1884, the post office at Barnes Hill was closed, and those at Freetown, St. James' and St. Stephen's were opened.

I can only guess at the reason for the elimination of Barnes Hill. The most common reason for a closing, other than lack of patronage, has been the resignation or the death of the postal agent or postmaster, and unavailability of a replacement. The opening of St. James' (later to be known as Cedar Grove) could have been related to the closing of Barnes Hill, for, as goes the crow, the two are not more than a mile and a half apart.

No references later than 18 October 1886 are found in the LIG, until the previously mentioned regulations in the issue of 13 September 1900, where Barnes Hill has been reopened, and Bethesda has made its initial appearance. Therefore, it can be said that in the time period from 18 October 1886 to 8 September 1900, Barnes Hill again came into service, and Bethesda was founded.

KEY FOR BOTH CHARTS

X - Indicates years where LIBB and LIG/OTHER KNOWN DATA P.O. totals do not agree.

A - Omitting Barbuda & St. John's B - Omitting Barbuda but including St. John's.

C - Including Barbuda & St. John's.

OTHER POST OFFICES:

D - BARBUDA	J - FREETOWN	O - MONTPELIER	S - ST. JOHNSTON'S
E - BARNES HILL	K - GREEN BAY	P - NEW FIELD	T - ST. PAUL'S
F - BENDALS	L - GUNTHORPES	(('THE GRANGE'))	(ENGLISH
G - BETHESDA	M - JOHNSON'S POINT	Q - NEW WINTHORPES	HARBOUR)
H - DOCKYARD	N - LIBERTA	R - PARES	U - ST. STEPHEN'S
I - FALMOUTH			V - SWETES

CHART 1 1850-1899					NAMES OF POST OFFICES									
					ESTABLISHED BEFORE TURN OF CENTURY					OTHERS				
YEAR	PO's per Durnin/ Chin Aleong LIBB Data				PO's per LIG and BCPSG/Other Data			ST. JOHN'S	ALL SAINTS		BOLANS	ST. JAMES'	ST. MARY'S	ST. PETER'S
	LIBB	A	B	C	A	B	C							
1850					0	1	1							(none)
1857					1	2	2							T
1878					3	4	4							T
1879					2	3	3							(none)
1880					2	3	3							(none)
1881					7	8	8							E P T
1884					Δ 9	10	10							J P T U
1886					9	10	10							same
x 1893	% 1893	8	9	9	↑	↑	↑							same
1898	1898		(unknown)		↑	↑	↑		① ②				③	same
1899	1899		(unknown)		9	10	10							same

(To CHART 2)

KEY FOR CHART 1

- ① - Proof strike of All Saints (1st type with Code Letter C) CDS, 10 OC 98.
 - ② - EDK All Saints 1st type CDS, 22 NO 98.
 - ③ - Proof strike St. Peter's CDS, 10 OC 98; EDK St. Peter's CDS, 6 DE 98.
 - ④ - All Saints and Old Road (St. Mary's) are listed in Antigua Postmaster's Report for 1878. Both SPO's may have been in existence for a considerable period of time prior to then. Chart assumes SPO start in 1878 in both cases.
 - ⑤ - Bolans', Barnes Hill, Parham (St. Peter's) and The Grange (Newfield) are first specified as Post Offices in the LIG of 24 November 1881. Nothing in the LIG's proves that any or all of them were not operating prior to that year, but chart assumes SPO start in 1881 in all four cases.
 - ⑥ - Barnes Hill was on "closed" status at least as early as 6 January 1884. Chart assumes SPO closed in that year. Chart also assumes an 1884 SPO start for Freetown, St. James', and St. Stephen's.
- % - Per Jaffé.
- Δ - Per BCPJ W/N 42.

Chart 1 reflects a new EDK for the 1st type All Saints CDS. This date was given to me in recent correspondence by Stan Durnin.

KEY FOR CHART 2

"Slashed numbers", e.g., "15/16", stand for "15 then 16".

-
- ① - LDK All Saints 1st type CDS, 16 JY 20.
 - ② - Renamed Cedar Grove.
 - ③ - Proof strike of St. Mary's CDS, 7 NO 04.
 - ④ - EDK St. Mary's CDS, 28 ? 05.
 - ⑤ - LDK St. Mary's CDS, 2 AP 31.
 - ⑥ - LDK St. Peter's CDS, 7 JA 31.
 - ⑦ - Proof strike of St. Paul's CDS, 7 NO 04 (per Jaffé).
 - ⑧ - EDK St. Paul's CDS, 15 AU 05.
 - ⑨ - EDK 2nd type English Harbour CDS, 17 AU 21 (per Surtees).
 - ⑩ - LDK St. Paul's CDS, 27 AU 24.
 - ⑪ - Renamed Seatons.
 - ⑫ - Bethesda and Barnes Hill are known to have been operating at least as early as 8 September 1900. However, Bethesda may have been opened as early as 1886 and Barnes Hill may also have been reopened as far back as that year. The chart assumes that both of these events took place in 1900.

-
- # - Notes described in E.C. Baker's *A Guide to Records in the Leeward Islands* suggest that these "double-year" Blue Books covered the fiscal-year, 1 April to 31 March (e.g., the 1902/03 LIBB was for activity of 1 April 1902 to 31 March 1903). This would result in the 1920 LIBB covering only a nine-month period. It would also indicate that the "11th SPO" of 1908 must have been activated subsequent to 31 March of that year. However, I still maintain that the "Rule of Eleven" LIG evidence proves that no SPO started in 1908, and thus that the figure of only 10 SPO's in LIBB's 1902/03 through 1907/08 is in error.

The previous notations of "first post-1900 LIG reference", which were indicated by Ⓞ in the Appendix II Table in BCPJ W/N 60, page 43, are omitted from this revised chart. Such references are now meaningless since we know that the "Rule of Eleven" was applicable in 1900.

This chart reflects the new LDK of the St. Paul's CDS (27 AU 24) that was reported by our Editor in BCPJ W/N 61.

CHART 2 1900 - NOW

NAMES OF POST OFFICES

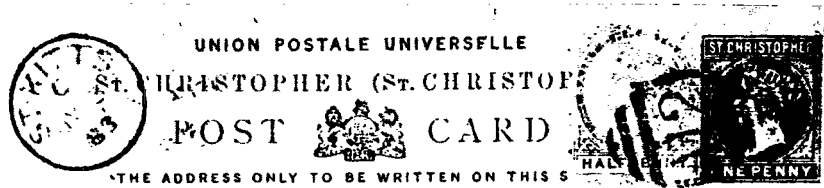
EXISTING CONTINUOUSLY SINCE
BEFORE TURN OF CENTURY

YEAR	PO's per Durnin/ Chin Aleong LIIBB Data			PO's per LIIG and BCPSG/Other Data			ST. JOHN'S	ALL SAINTS	POLANS	ST. JAMES'	ST. MARY'S	ST. PETER'S	OTHERS
	LIIBB	A	B	C	A	B							
1900	1900	(unknown)			11	12	12						E G J P T U (12)
1901	# 1901/02	(unknown)			↑	↑	↑						same
X 1902	# 1902/03	10	11	11									same
1903	# 1903/04	(unknown)											same
X 1904	# 1904/05	10	11	11							(3)		E G J P T (7) U
X 1905	# 1905/06	↑	↑	↑							(4)		E G J P T (8) U
X 1906	# 1906/07	↓	↓	↓									E G J P T U
X 1907	# 1907/08	10	11	11									same
1908	# 1908/09	11	12	12									same
1909	# 1909/10	↑	↑	↑									same
1910	# 1910/11	11	12	12									same
1911	# 1911/12	(unknown)											same
1912	# 1912/13	11	12	12									same
1913	# 1913/14	↑	↑	↑									same
1914	# 1914/15												same
1915	# 1915/16												same
1916	# 1916/17												same
1917	# 1917/18												same
1918	# 1918/19												same
1919	# 1919/20												same
1920	1920							(1)					same
1921	1921				11	12	12						E G J P T (9) U
X 1922	1922				11	12	13						D E G J P T U
X 1923	1923				↑	↑	↑						same
X 1924	1924												D E G J P T (10) U
X 1925	1925	11	12	12	↓	↓	↓						D E G J P T U
1926	1926	11	12	13									same
1927	1927	11	12	13	11	12	13						same
X 1928	1928	13	14	15	11/12	12/13	13/14						same plus K
1929	1929	↑	↑	↑	12/13	13/14	14/15						same plus N
1930	1930	13	14	15	13	14	15						same
X 1931	1931	16	17	18	13	14	15			(2)	(5)	(6)	same
1932	1932	↑	↑	↑	15/16	16/17	17/18						D F I K L M N O R S U (11) V
1933	1933				16	17	18						D F I K L M N O R S U V
1934	1934				↑	↑	↑						same
1935	1935	16	17	18	16	17	18						same
1936	1936	15	16	17	16/15	17/16	18/17						same minus S
1937	1937	12	13	14	15/12	16/13	17/14						same minus I, U, and V
1938	1938	↑	↑	↑	12	13	14						same
1939	1939				↑	↑	↑						same
1940	1940	↓	↓	↓									same
1942	1942	12	13	14									same
1944	(LIIBB not published)												same (O became St. Philip's)
1945	1945	12	13	14	12	13	14						same (K renamed Grays Farm)
1948	(LIIBB not published)				12/11	13/12	14/13						D F J K M N U
1961		↑	↑		11	12	13						same plus H and minus K
1965					11/12	12/13	13/14						D F H J M N Q U
1967		↓	↓		12/13	13/14	14/15						same plus K
NOW		(LIIBB not published)			13	14	15						D F H J K M N Q U

A Card from St. Christopher

by Colin H. Bayley

The message carried by a recently acquired St. Christopher post card relates to the very rare small-type one penny on two-pence-half-penny surcharge of that Colony, SG No. 27, Scott No. 23. This surcharge was printed in May 1888 at the office of *The Advertiser* in Basseterre. It has been the subject of a number of notes in various philatelic publications, among which may be mentioned articles by E.D. Bacon in *The London Philatelist* (Vol. 36, 1927, pp. 75-76) and by L.J. Gilbert-Lodge in the same *Journal* (Vol. 37, 1928, pp. 187-188). Gibbons 1971 Catalogue lists it at £1700 in mint condition, while the 1972 Scott Catalogue considers it to be worth \$5000.



Mess Durbin & Hanes
 88 South Seventh Street
 Philadelphia P.A.
 U. S. A.
 "Bermuda"

Bacon makes reference in his article to a statement that only one sheet was printed with this surcharge, citing as his source, *The Philatelic Monthly*, of Philadelphia, Pa., (Vol. 14, 1888, p. 5). He also refers to an article in *The Philatelic Record* (Vol. 18, 1896, p. 98), reporting similar information provided by the Postmaster of St. Christopher.

My item (*see photo*) is a one penny UPU post card with added ½d stamp, which is both dated and postmarked July 3, 1888. It is sent to Durbin and Hanes, a firm of stamp dealers in Philadelphia, by W.P. Pearce, a local stamp dealer in St. Christopher as well as the Clerk in Charge of the Post Office at Basseterre. The message on this card is concerned with an accounting of some philatelic transactions between Pearce and the addressee. He ends his note by saying "Only twenty of the small surcharge on the 2½d were issued, and as I only managed to get a few, I am holding them for a good price." One can only hope that he got it!

EDITOR'S NOTE: Mr. Pearce obviously took advantage of his official position in the St. Kitts Post Office to obtain his copies of this rare surcharge. Perhaps he even influenced their manufacture. However, at the time he was in office this seems to have been a tolerated practice.

A contemporary of Pearce, Griffith B. Seignoret, Clerk in Charge of the Post Office at Roseau, Dominica, was another individual who combined his official duties in the P.O. with philatelic activities. For details the reader is referred to an article *Dubious Deals in Dominica*, in the BCPJ of February 1968, W/N 41.

NO DUES, NO JOURNALS!

Members who haven't already paid their 1972 dues are urged to do so at once. There has been a change in our procedure with respect to those who fail to pay their dues on time. In previous years, such members were sent the FEB, APR, and JUN Journals, before being dropped from the Journal mailing list. Since some never did pay their dues and were dropped from the membership rolls at year's end, we received no reimbursement for the expense of mailing them these three issues.

While this loss has not been large in terms of our Journal expenses, it has been an unnecessary drain on our Treasury, and an imposition on the members whose dues have had to make up the loss. The problem was discussed at our NOJEX Meeting in October with members agreeing that henceforth any unpaid member should only be sent the FEB and APR issues before being dropped from the Journal mailing list. As dues notices are mailed with the December Journal, they should reach each member early enough to allow him to make payment prior to mailing time of the June Journal. The effect of this new dues policy will be to reduce our loss by one-third, and hopefully it will encourage members to pay up promptly, a blessing for our Treasurer and Editor and a saving of the cost of reminder notices.

A B.V.I. PROOF?

by Fred F. Seifert

While hunting through the bourse at the TEXANEX show last year, one of the finds we made was a copy of the British Virgin Islands stamp, SG 43, the ½d of 1899, that is normal in all respects except color; it is black instead of yellow-green! After we had searched in vain through our literature on the BVI in hope of finding some clue as to what we might have, we wrote to Jay Fredrick who specializes in the BVI. Jay reports that he has been unable to find any record of a proof of this stamp in this form and color.

Our stamp is in unused condition, with the gum, if it ever had any, removed. It is in very fine condition, and on comparing it with our only copy of the normal stamp, we find the impression a bit sharper, a characteristic of a proof or early printing of a stamp from a new plate. Any help in identifying our item will be appreciated.

Guyana Expedition Covers Offered

If you like souvenir covers which have been carried to remote places by expeditions conducting scientific exploration, you may be interested in the following items:

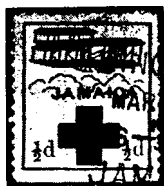
The British Roraima Expedition to Guyana took along 300 covers on their trip into a remote part of Guyana's Southwest Interior. These were backstamped with cachets to show various stages of the trip, and were postmarked both at Kamarang Postal Agency and Georgetown. Each cover contains inserts detailing the scope of the expedition. The price is £1, or \$3 U.S. Also offered, is a set of three photographs that were taken during this expedition, the price being 37½P or \$1 U.S., plus postage.

The Cambridge Expedition visited Northwest Guyana, and also carried 300 covers with them. They are postmarked at Mabaruma. Price--50P, or \$2 U.S. Orders should go to George C. Sinclair, 20 Thaxted Road, Buckhurst Hill, Essex, England, with checks or postal orders payable to "The Honorary Philatelic Secretary".

NEW JAMAICA RED CROSS VARIETY

by Charles E. Cwiakala

Most British Caribbean collectors are familiar with the Jamaica Red Cross labels of World War I. These labels were produced by the Dennison Co. of Massachusetts, with the design, all in red, consisting of an early type aircraft, above a red cross and a bank of clouds. The basic labels were first released in their original form. They were subsequently overprinted in red or black ink with JAMAICA, or in black ink with JAMAICA plus their value in words HALF-PENNY. Thus four varieties have been known for quite a few years, and now and then one runs across them in stocks of dealers and, more rarely, on covers of World War I vintage. It was permitted to place the labels on the cover next to the postage stamps, so used examples often bear Jamaican postmarks.



Recently a new overprint has come to light. In the *American Philatelist* for May of 1971, Harry F. Rooke presented an article "Some Remarkable Red Cross Issues", which includes descriptions of the Trinidad, Grenada and Jamaica labels. However, in his discussion of the Jamaica labels, he shows a fifth variety which bears an overprint of JAMAICA in black, but with the value of 1/2d in figures flanking the cross! Since reading his article, I have written to Mr. Rooke, who kindly sent me this new label for examination. It appears genuine in all respects, for the overprint is tied by and under a strike of a Kingston postmark, current when these labels were in use.

I have rechecked all of the literature on these Red Cross labels, and was unable to find any reference to this type. Perhaps it was a trial impression of an overprint which was not adopted, with the sheet subsequently being used by some conservation-minded individual. This was a time of war when supplies were limited, and it seems unlikely that a sheet that could be used would be discarded, merely because it bore an unadopted overprint. Does any reader have or know of another specimen?

GUYANA INCREASES OVERSEAS POSTAL RATES----

Those of us who have been unhappy with recent increases in postal rates in the U.S. and Canada can sympathize with the folks in Guyana. On December 1st, the rates for overseas mail were increased, with the jump being up to 150% in some cases, according to a Reuter's report in the *Trinidad Guardian*, passed to us by Ben Ramkissoon.

Guyana's postal authorities claim that the rates, which have not been changed since 1964, have had to be increased to meet the rising costs of providing postal service in Guyana.

HEAVY DEBTS CAUSE CARIBAIR TO QUIT----

The Eastern Caribbean lost one of its air carriers at the end of November, when the Puerto Rican based airline, Caribair ceased operating. The company had been unable to meet its debts of more than ECC \$250,000, and was put into receivership. It had served such countries as Trinidad, Barbados, St. Vincent, Dominica, Martinique, and the Virgin Islands, as well as having flights to and from Puerto Rico and Miami.

Eastern Airlines has filed an application to take over Caribair's routes. They say they will rehire all former Caribair employees if granted the routes.

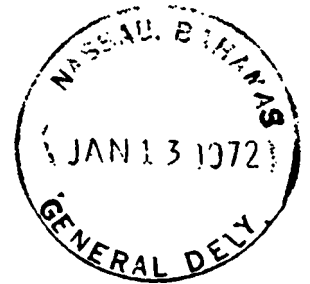
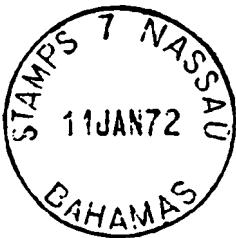
SOME CURRENT NASSAU POSTMARKS

by Joseph V. Lleida

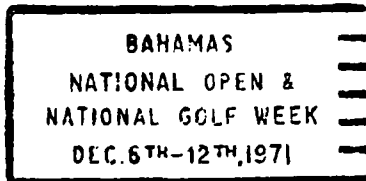
In recent Journals there have been reports by Morris Ludington and Tom Giraldi that described new postmarks at the G.P.O. in Nassau. Seeking some further information, I recently paid a visit to the new Nassau G.P.O., and here are some of my findings.

Postmarks of the STAMPS...NASSAU/BAHAMAS type have preciously been reported having the numbers 1, 3, 4, 5 and 8. Fortunately, I found stamp windows 2, 6 and 7 open, and was able to secure covers postmarked with these three missing numbers. One of the stamp windows at the G.P.O. was using a regular NASSAU/BAHAMAS Type 8 CDS.

Also previously reported was a REGD. DELY. C. NASSAU/BAHAMAS mark. There are three windows for Registered Incoming Mail, and I can confirm marks for A, B and C. They are normally used to backstamp incoming registered mail.



At the General Delivery window, I found two marks in use. One is a Type 8 CDS that reads GEN. DELY. NASSAU/BAHAMAS. Morris has reported a similar mark that bears the number 2 after DELY., and presumed the existence of a number 1. Perhaps this stamp without number serves as number 1, but I cannot confirm this at the moment. A TRD of about 37 to 38 mm diameter, reading NASSAU, BAHAMAS/GENERAL DELY., was in use as a date stamp on incoming parcels and packages, to indicate when they arrived at the General Delivery facility. The Type 8 CDS mentioned above is normally employed for cancelling adhesives used to pay "postage due" on underpaid mail.



At Mackey Street, I found only two postmarks in use, a MACKAY STREET/BAHAMAS Type 8 CDS, and the machine canceller. On DEC 14, 1971, the machine was using a slogan to the right of the CDS which advertised the "Bahamas National Open", but this use was two days after the affair had ended! This event was also proclaimed by both Nassau and Freeport with the slogan at left above, positioned to the left of their CDS's.

NEW ISSUES

ANGUILLA

29 NOV 71 CHRISTMAS ISSUE. 20, 25, 40 and 50 cents, featuring religious paintings by Raphael, Botticelli, Murillo and Dürer. Designs by John Lister Staff Artists. Lithographed by Questa in panes of 25 on unwatermarked paper.

BERMUDA

71 HEATH-NIXON TALKS. The 4, 15, 18 and 24 cents current definitives were overprinted "Heath-Nixon December 1971".

BRITISH HONDURAS

DEC 71 NEW POSTAGE DUE LABEL PRINTING. This new printing of the 2¢ postage due is on Block CA watermark sideways paper, and is perf. 13 3/4 x 13 1/2. The pane size is 60 stamps. The previous printings were watermark Script CA and the perforation was 13 3/4 x 14. Thus, it can be expected that this new printing will be listed in the catalogues as a major variety.



28 FEB 72 EASTER 1972. Four stamps, 6, 15, 26 and 50 cents, as illustrated above. Designed by Gordon Drummond, and lithographed by Format International in sheets of 25 stamps on Block CA watermarked paper.

CAYMAN ISLANDS

10 JAN 72 CO-AXIAL CABLE ISSUE. 2, 10, and 40 cents in a single design, as illustrated. Lithographed by Walsall Security Printers Ltd. based on designs made by Anglo Arts Associates for Cable & Wireless Ltd. Stamps are in sheets of 25, and are on Block CA watermarked paper.



DOMINICA

18 OCT 71 BOY SCOUT JAMBOREE ISSUE. This issue also included a souvenir sheet of two stamps, the 30¢ and \$1. The regular and miniature sheet versions of the \$1 value are slightly different. The regular issue bears "Dominica" in small print below the pocket on the Scout's shirt. On the \$1 of the souvenir sheet this has been removed. Other details of this set will be found in the New Issues listing in the October 1971 Journal.

GRENADA

DEC 71 CHRISTMAS ISSUE. 15, 25, 35, 50¢, and \$1, featuring religious paintings of the Old Masters. The stamps were lithographed by Questa from designs of G.L. Vasarhelyi.

DEC 71 MILITARY UNIFORMS. This issue, described in the December 1971 Journal, also included a souvenir sheet containing one each 25¢ and \$1 stamps.

JAMAICA

17 FEB 72 EARTH SATELLITE STATION. Three values, 3, 15 & 50 cents having a common design showing a dish antenna pointed at a satellite. Designed by Cable & Wireless Ltd., and lithographed by John Waddington of Kirkstall Ltd in sheets of 25 stamps on Block CA watermarked paper.

ST. LUCIA

15 MAR 72 Easter 1972. A set of four stamps in two designs. The 10 and 25 cents feature "The Dead Christ Mourned" by Carracci, with "Angels Weeping Over The Dead Christ" by Guercino seen on the 25 and 50 cents. Lithographed by Questa on Block CA watermarked paper in sheets of 25 stamps, with the designs produced by Gordon Drummond. This set was originally scheduled for release on 15 FEB 1972, but has been rescheduled to 15 MAR 1972.

ST. VINCENT

14 FEB 72 MILITARY UNIFORMS. 12, 30 and 50 cents. Details of design not given in Crown Agents' release. Designed by Waddington's Studio and lithographed by Waddingtons of Kirkstall on Block CA watermarked paper in sets of 25.

TURKS & CAICOS

21 FEB 72 10TH ANNIVERSARY OF THE SPLASH-DOWN OF COL. JOHN GLENN. No details have been received from CA.

This listing is based on information provided by the Crown Agents Stamp Bureau, and by the Inter-Governmental Philatelic Corporation. Unfortunately, the latter agency seldom provides complete, accurate and timely announcements. Thus, our information regarding new issues of Dominica, Grenada, and Trinidad will often be incomplete or long after the release date.

We thank the Crown Agents for their excellent cooperation in keeping us up to date.

OUR SECRETARY REPORTS:

New Members:

ALLINGTON, DAVID N.	ANDERSON, MICHAEL M.	BUCK, FREDERICK L.
FRANKLIN, JOHN E.	LUNDBERG, JOHN P.	MAYER, ARTHUR A.
PHELP, SYDNEY	*POLLOCK, EUGENE L.	+PUSTEL, GABRIEL
REGO, MICHAEL R.	ZANES, HELEN L.	

*Omitted in error from the New Member list in December 1971 Journal. +Reinstated.

New Applicants:

Any member knowing of good reason for refusing BCPSG membership to any of the below listed applicants is requested to advise the Secretary.

BIANCOTTI, JACK W., P.O. Box 15, Listie, PA 15549. Student.	Specializes in all phases of British Honduras.
DICKINSON, MILES W., 1730 Magnolia Way West, Seattle, WA 98199. Engineer. Barbados, US, BNA, Hawaii, Postal Cards.	by A.N. Johnson Electrical
FAIGIN, MARTIN A., 9413 Russell Road, Silver Spring, MD 20910. U.S. Government. BWI, US.	by A.N. Johnson Budget Examiner-
HANNAN, JAMES B., 9 Chedworth Road, Scarsdale, NY 10583. Bermuda.	by A.N. Johnson Self-employed.
HANSON, THOMAS G., 48 West Main Street, Apt. #1, Mendham, NJ 07945. (Bank). BWI, particularly Leewards & Grenada; Australia.	by A.N. Johnson Budget Analyst
HARRISON, ROBERT, 121 Harbor Avenue, North Vancouver, BC, Canada. Brit. Caribbean (pre-1937, also literature, monographs); China Post Offices and its Treaty Ports; Hong Kong; Canadian Plate Blocks.	by D. Stapp & A.H. Spear Company Pres.
JUHL, IDA (MRS. CHRIS A.), UNDP Box 280, Kingston, Jamaica, W.I. BWI, Great Britain, and all old British Colonies.	by A.N. Johnson Housewife.
KIEFFER, LINCOLN E., P.O. Box 352, Montvale, NJ 07645. Retired. Netherlands and Colonies---especially Suriname, Netherlands Antilles (Curaçao), and former Dutch New Guinea.	by A.N. Johnson Postal History of
LEU, THOMAS W., 6653 North Oketo Avenue, Chicago, IL 60631. West Indies: Cayman Islands, Leeward Islands, Grenada (pre-independence), Dominican Republic, Guadeloupe, and Martinique.	by F.F. Seifert Electronic Engineer.
MACK, MILLARD H., 2133 Luray Avenue, Cincinnati, OH 45206. Barbados.	by F.F. Seifert Life Insurance Sales.
	by S.C. Durnin

MUDRA, BOYD J., 2334 South 60th Court, Cicero, IL 60650. Plant Engineer. British Commonwealth, Portugal and Colonies, and U.S. by A.N. Johnson
 PARKER, KING, JR., 1341 North Main Street, Walnut Creek, CA 94596. Certified Property Manager. BWI, U.S. & Possessions, Latin WI, and Canada. by A.N. Johnson
 PROKESCH, DR. CLEMENS E., 30 Admiral Drive, New London, CT 06320. Physician (Internal Medicine). BWI; Medicine, Space, Oceanography, & Navy Covers; Australia; Scandinavia. by A.N. Johnson
 STUBBS, JAMES E., 1160 Pierce Street, Apt. 308, Denver, CO 80214. Petroleum Geologist. Used British Colonies (1910-1953). by A.N. Johnson
 WADSWORTH, FRANK H., Sacarello 1016, Rio Piedras, PR 00924. Forester. Legible town cancellations, Bahamas to Trinidad (not Bermuda, Guyana or B.H.). by A.N. Johnson

Deceased:

BARCELO, JEAN, of Mount Saint Hilaire, Quebec, Canada, died in mid-1971.

Resignations:

COE, EDGAR B.; HAYWARD, C.W.; MASON, DONALD G.; MILES, RAYMOND J.; OWEN, GUILFORD; RAY, SAMUEL; SATTLER, CARL S., SLATTERY, DAVID L., VOOYS, DANIEL W.; and WEINBERG, EDWARD, have resigned in good standing.

Dropped for Non-payment of Dues:

BALDWIN, J.	BOWES, P.	CANNARSA, D.	CHELF, P.	CROWE, J.
DANIELS, G.	DONNELL, R.	EDWARDS, D.	ELAND, M.	GREGSON, J.
HERSH, E.	KEPES, R.	KOTCHIE, D.	MITCHELL, J.	MRYCZKO, M.
PIETZSCH, S.	QUINTIN, R.	THOMPSON, J.	WRIGHT, D.	

Change of Address:

CAMACHO, JOHN, 651½ West 30th Street, Los Angeles, CA 90007.
 CRONIN, JOHN A., 7 Campbell Road, Burton Park, Nr. Christchurch, Hants., England.
 DURIN, STANLEY C., P.O. Box 532, Albany, OR 97321.
 KIMBER, GEORGE H., East End, Grand Cayman, B.W.I.
 LIMRICK, BRIAN, c/o 1A Castleton Road, Walthamstow, London E.17, England.
 MALO, LOWELL L., 2810 Mayer Street, St. Charles, MO 63301.
 SHEPHERD, ANTHONY, add Post Code HX2 7JN.
 SHEPPARD, MICHAEL, add Post Code RH1 5BH.
 SUAREZ, C. ROBERTO, 937 S.W. 9th Street, Miami, FL 33130.
 THOMPSON, JOHN E., 103 East 86th Street, Apt. 7A, New York, NY 10028.
 WILMOT, VINCENT S., 345 East Grand Street, Mt. Vernon, NY 10552.

BARBUDA ISSUE DECLARED INVALID----

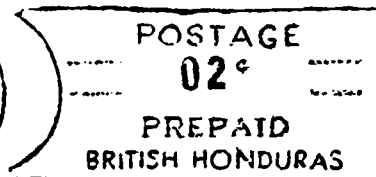
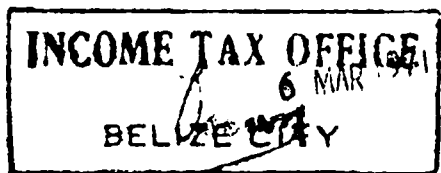
A Crown Agents announcement advises that the Postmaster General of Antigua informed them that there has been no statutory authority granted for production or sale of a Barbuda Dürer or any other issue subsequent to the Christmas 1971 issue. The Agent who had been handling production and philatelic distribution of the Barbuda stamps, had announced the release on December 7th, 1971 of a set of four stamps, to "honour the 500th birthday of the famous German artist Albrecht Dürer." Whether or not the stamps were actually released to dealers is not known at the moment, however it can be reported that the set was prepared, and specimens were supplied to the press.

The contract between Antigua and the above-mentioned Agent was cancelled by Antigua on August 15th, 1971. It has been indicated that future issues will bear the title "Antigua and Barbuda", with production and distribution to dealers being handled by the Crown Agents.

BITS & PIECES from HERE & THERE

BRITISH HONDURAS -- The machine slogan WE UNITE TO/BUILD A NATION has been used for a long time at Belize City, and is quite common. There is also a handstamp version which is quite uncommon. Thanks to Chuck Cwiakala, we now have a nice strike of it on a cover from SAN IGNACIO, 3 JY 65, also bearing a CAYO registration label. (San Ignacio was originally known as Cayo or El Cayo.)

From Mark Swetland comes information on several previously unreported markings. In 1970/71, the Belize Telecommunications Authority conducted a mail survey to see how many potential telephone customers there were in British Honduras outside of Belize City. The survey forms were franked with the Prepaid Return mark shown below.



On a letter to Corozal Town, 6 MAR 1971, the Income Tax Office in Belize City utilized the handstamp shown above to frank the cover.

GRENADA -- John Cronin posted a cover to a fictitious addressee at POST ROYAL in an effort to learn how Grenada postmarked undeliverable mail from other countries. It came back in due course, bearing a boxed 72 x 44 mm handstamp on the front reading: RETURN TO SENDER/REASON FOR NON-DELIVERY CHECKED, with various explanations for the P.O. clerk to check, such as UNCLAIMED, DECEASED, UNKNOWN, etc. John believes that this stamp was applied in Grenada for it has a smaller RETURN TO SENDER mark of the British G.P.O. Mt. Pleasant facility struck over it. The cover is backstamped with the Post Royal CDS.

GUYANA -- Post Office Notice No. 297, published in the *Official Gazette* of 2nd OCT, 1971, announced that on 1 APR 1972, a number of issues of British Guiana and Guyana stamps would be invalidated. Issues included are all those between the Coronation stamp of 2 JUN 1953 and the Christmas issue of 11 NOV 1968.

We note that the above notice is signed by J.A. Charles, Postmaster General. This is the first indication we have had that former PMG Giles has left that office.

JAMAICA -- Air Jamaica started service between Kingston and Philadelphia, 1 DEC 71, and Ronnie Wong sent us a first flight cover. It is postmarked with a TRD reading FIRST FLIGHT/1 DEC 1971/AIR JAMAICA, and a Kingston MSR of same date. The cover is backstamped with a large CDS reading PHILADELPHIA/DEC/1/1971/P.M./PA. The TRD also saw use on previous Air Jamaica first flights. This new service is flown non-stop between the two cities with Super DC 9 jets.

LEEWARD ISLANDS -- We have picked up a copy of the Leeward Islands Victoria 6d with a postmark that baffles us, and wonder if anyone can offer an explanation. It has a large letter "D" centered in a thick circle of about 22 mm diameter. The strike is in black ink, and a bit rough (a cork mark?). Circle and D are about 2 mm thick and both show several breaks. Any ideas Stan?

ST. VINCENT -- New printings of the 1c and 5c definitives that were released on 9th August 1971 are on shiny or glazed paper and will probably rate catalogue listing.

MEMBERS' MART

Advertising in this section accepted from members only, at 50¢ per line, minimum of two lines. Mail your copy with payment to Editor at address given on front cover.

WANTED - JAMAICA FIRST FLIGHT COVERS (to and from) to purchase. Send a description and asking price. WARREN D. BUCHANAN, 49 MANSFIELD AVE., DARIEN, CONNECTICUT 06820

PHILATELIC BOOKS OFFERED - PERKINS BACON RECORDS (2 vols.) by De Worms, publication of the Royal Philatelic Society, London, \$14. THE DE LA RUE HISTORY OF BRITISH AND FOREIGN POSTAGE STAMPS by Easton, also published by the Royal, \$7.50. Books are in excellent condition. MRS. BERT S. TAYLOR, 479 SPINNAKER DR., NAPLES, FLORIDA 33940

PERSONAL MENTION-----

REG LANT has asked us to inform his many friends that he suffered a small stroke on 8th January, and his doctor says it will be about three months before he will be on his feet again. He won't be able to attend to his correspondence at this time, but we know he will be very pleased to hear from all of you.

Congratulations go to AL BRANSTON, who was recently elected to the grade of Fellow, by the Royal Philatelic Society, London.

ERIC HEYER reports he is doing well after undergoing a bit of surgery recently. We are sure he will soon be ready to take off with Lulu for another installment of his quest to "see the world before you leave it".

Visiting the Netherlands in December, JOHN OLTHOF was present at the celebration of the 50th wedding anniversary of his parents. John sent us a card from Deventer, a town which we remember well, having stopped overnight at its Royal Hotel, and where we enjoyed the famed *Deventer Koek*, a gingerbread delicacy.

GALE RAYMOND has finally made his hoped-for trip across the Pacific, and visited in a number of exotic places. Covers have reached us from Tahiti, Timor and Laos!

CONVERSATION PIECES

Our Postal History Material of the World has postmarks, covers, proofs, specimens, used abroads, unlisted rarities, postal stationery, fakes, forgeries, multiples and Cinderellas. We specialize in British West Indies postmarks and numeral obliterations but many elusive items of the world are in stock. Drop us a line. It might take months till we get around to answering you, but the old bum, our staff of one, won't be rushed. We also buy and are much faster in that department.

1954 Bahamas coils - complete paste up strips of 5 values. \$30.00
1965 Bahamas unissued coils complete paste up strips of 5 values \$300.00
1964 Jamaica coils - complete paste up strips of 4 values. \$25.00



BAHAMAS STAMPS

B. W. I. Cancellation Specialists
BOX 333, ULETA, FLA. 33164

TOM GIRALDI has passed his SCUBA tests and is looking forward to another Caymans trip to try out his underwater skill on some of the reefs and wrecks down there.

When the winter gets rough in Newfoundland and the birds fly south, the AYRES are not far behind them. JOHN and MARY plan to be in Barbados, enjoying the sun and sea, for a month or so in February and March.

BOB TOPAZ had ENGLAND, ITALY, and SPAIN on his itinerary as he departed for Europe in early January. While in London he managed to get in a visit with BERT LATHAM.

The Roses Caribbean Philatelic Society has a new Chairman, DEREK SUTCLIFFE, while the new Secretary of that ever-active group is MALCOLM WATTS. Thus the Roses are in good hands and assured a successful season.

Malcolm has sent us a more detailed report of their meeting at Harrogate, at which AL BRANSTON gave a display, and mentions some of the rare items that Al showed them. We learn from Malcolm that DOC RITCHIE is the Secretary of the Harrogate P.S.

AGUSTIN CANTENS is Editor of a new English language journal, *The Cuban Philatelist*, a Cuban Philatelic Society publication. The first issue of this new quarterly appeared recently, and contains articles on Booklet Panes of Cuba, RPO's in Cuba, and a number of other interesting articles. If you are interested in further information, Agustin should be contacted at P.O. Box 476, Buena Vista Station, Miami, FL 33137.

December was a busy month for RONALD WARD. On the 6th he was at the Mansfield P.S. to present 292 sheets of Haiti material; then two days later on the 8th he was showing a society at Rotherham, 96 pages each of BVI and Anguilla. However, this was still not the end of his activity, and on the 10th & 11th he was back home in Sheffield, and at a Stamp and Coin Fair at the Cutlers Hall, his choice was Local Postal History of the Sheffield Area, and a "Christmas Fantasy".

JOHN CRONIN has regretfully concluded that a career in the RAF no longer offers great promise, with promotions becoming rare, so he is forsaking the service for a civilian career. We wish him good fortune in finding an interesting and rewarding position.

BACK ISSUE CLEARANCE SALE

TO HELP CLEAN OUT THE EDITOR'S GARAGE (and it really needs it), BACK ISSUES OF THE JOURNAL PRIOR TO 1970, WILL BE SOLD FOR 50¢ PER COPY, OR THREE FOR A DOLLAR WHILE THE SUPPLY LASTS. THESE ARE THE WHOLE NUMBERS AVAILABLE: 17-20, 22-26, 30-33, 39, 44-52. SOME OF THEM ARE XEROX COPIES.

SEND ORDERS TO THE EDITOR



**BRITISH CARIBBEAN
POSTAGE STAMPS**

Find the unusual and the elusive in the H. R. Harmer, Inc. auctions.

Request auction catalogue and leaflet "How to Buy at Auction".

H. R. HARMER, INC.

International Stamp Auctioneers

6 West 48th Street, New York, N.Y. 10036
(212) 757-4460

**SPECIALIST
MATERIAL**

WE HAVE AN EXTENSIVE STOCK OF CANCELLATIONS, COVERS, SPECIMENS, ESSAYS, PROOFS AND THE LIKE FROM THE BRITISH CARIBBEAN COUNTRIES, AS WELL AS THE REST OF THE WORLD.

We will gladly send a selection on approval to any member of the British Caribbean Philatelic Study Group. Just tell us what kind of material you would like to see.

WILLIAM BOGG

NEW ENGLAND STAMP COMPANY

45 BROMFIELD STREET,
BOSTON, MASS. 02108
TELEPHONE: 617 HA6-2712

HUGO STORER was a judge at PURIPEX XVII in September, in San Juan, P.R. Hugo served as President of the Sociedad Filatélica de Puerto Rico during 1971, and is now on the Board of Directors as its Advisor.

AND AS WE GO TO PRESS:

On 24 JAN 1972, Anguilla released a set of four Ancient Maps stamps, in denominations of 10, 15, 40, and 50 cents.

BILL BOGG mailed us a letter from on board the *S.S. Oceanic*, while on a cruise in the West Indies. It arrived completely devoid of postmarks, so we don't know if we own a paquebot cover, sans paquebot markings, or an ordinary posted-on-shore cover! By the way, Bill is now the Vice President of the American Stamp Dealers Association, having been elected to that office last November.

The 1972 program of the Collectors Club of New York includes a presentation by one of our members, Sir Henry Tucker, on Bermuda. The date is October 18th, so if you are in or near New York at that time, be sure and get to the C.C. at 22 E. 35th St. by 7:30.

Being distributed with this BCPJ issue, is the 1971 Index. Our thanks go to JIM HALE who compiles these for us each year. They really help when one wishes to look up any articles in back issues.

A phone call today (6 FEB) from Bob Topaz, informs us that MILT ERICKSON succumbed to a heart attack. We were too upset by this sad news to obtain further details, but we understand that Milt's death came after he had been in the hospital for three weeks.

WERNER FRAMKE and GALE RAYMOND have called our attention to the inscription appearing on the Anguilla Christmas issue that reads "H.M. COMMISSIONER IN ANGUILLA". We note the new Maps issue has this wording also.

With our fellow BCPGers KEN WOOD and STAN DURNIN as Editors, *Western Stamp Collector* is bound to be the best general philatelic publication in the U.S. The current rate for subscriptions is \$4 per year, however, send the enclosed form to Editor Fred with just \$3.50, and we'll see that you get WSC for a full year.

A NEW BOOK

from

50 PALL MALL, LONDON, SW1 Y 5JZ
ENGLAND

The Royal Mail Steam Packets to Bermuda and the Bahamas

by M.H. LUDINGTON
& GEOFFREY OSBORN

IS A RECORD OF THE ROYAL WEST INDIA STEAM PACKET COMPANY SHIPS, AS REPORTED IN SOME CONTEMPORARY COLONIAL NEWSPAPERS. IN ADDITION TO ELEVEN HALFTONE ILLUSTRATIONS AND FIVE REPRODUCTIONS OF ROUTE MAPS EACH MONOGRAPH CONTAINS FIVE ENLARGED MAPS FOR USE BY COLLECTORS.

Crown Quarto
Twenty-four pages
£1.25 or \$3.00

ROBSON LOWE LTD.

PHILATELIC PUBLISHERS

ALSO AVAILABLE FROM:

HJMR

"
P.O. BOX 308
NORTH MIAMI, FLORIDA 33161
U.S.A.

PLEASE SAY THAT YOU SAW THIS ADVERTISEMENT
IN "The British Caribbean Philatelic Journal"